

- ⇒ Be wary of anyone walking up to your vehicle. Be ready to leave the area quickly.
- ⇒ Don't stop to assist disabled motorists. Call law enforcement instead.
- ⇒ If you think someone is following you, drive to a lighted location where there are other people or the nearest law enforcement office.



BUSINESS ROBBERIES

What makes a business a good robbery target?

- ⇒ Cash on hand.
- ⇒ Only one employee (clerk, teller, salesperson) visible.
- ⇒ Good getaway potential.
- ⇒ Poor lighting, especially after dark.
- ⇒ Street view obscured.
- ⇒ Isolated from public/neighbors.

BUSINESS ROBBERY PREVENTION TECHNIQUES

- ⇒ Be alert to suspicious customers as robbers often "case" their target.
- ⇒ Make sure the business is clearly visible from the street. The cashier area should be easily seen from outside.
- ⇒ The business and parking areas should be well-lighted at all times.
- ⇒ Be vigilant in your hiring process as robbers can be past employees. Photograph all new employees, and keep photocopies of their driver licenses.
- ⇒ Always have at least two employees present for opening and closing.
- ⇒ Use alarm systems and security cameras.

CONTACT Us:

9-1-1 FOR EMERGENCIES

352-955-1818 FOR NON-EMERGENCIES

ACSO Important Phone Numbers

ACSO Main Administration	352.367.4000
Crime Prevention Unit	352.374.1800
Crime Stoppers & Gun Bounty	352.372.7867
Dept. of the Jail	352.491.4444
Evidence Section	352.367-4076
Human Resources	352.367.4040
Narcotics Tip Line	352.374.1849
Patrol	352.367.4101
Public Information	352.367.4050
Property Unit	352.367.4078
Records Bureau	352.367.4006
Victim Advocate Unit	352.367.4193



BROUGHT TO YOU BY:

Sheriff Chad D. Scott

P.O. Box 5489, Gainesville, FL 32627
2621 SE Hawthorne Road, Gainesville, FL 32641
<https://www.acso.us>



FOLLOW US ON
SOCIAL MEDIA
@AlachuaSheriff



ACSO 2025

ALACHUA COUNTY SHERIFF'S OFFICE



ROBBERY PREVENTION



WHAT IS A ROBBERY?

In simplified terms, **robbery** is the taking of someone's property through the use of force, violence, or threat.

There are several different types of robbery. They are all considered to be felonies, with penalties ranging from 5 years to life imprisonment and fines from \$5,000 up to \$15,000.

Robbery by sudden snatching is a 3rd degree felony with imprisonment up to 5 years and a fine up to \$5,000. Purse snatching is a type of robbery by sudden snatching.

Unarmed robbery (also called strong arm robbery) is a 2nd degree felony. Penalties include imprisonment up to 15 years and fines up to \$10,000.

All remaining forms of robbery are 1st degree felonies.

Armed robbery with a weapon, home invasion robbery with a weapon, and carjacking (unarmed) are all punishable by up to 30 years in prison and a fine of \$10,000. The commission of any of these crimes with a deadly weapon increases the maximum incarceration to life imprisonment.

CHARACTERISTICS OF A ROBBERY

- ⇒ Robbery is the #1 source of violence from strangers.
- ⇒ Weapons are most likely to be used.
- ⇒ Robbers use surprise and confrontation.
- ⇒ Robberies must be executed rapidly.

- ⇒ Robbery is often a planned crime with a predetermined target.



- ⇒ More than half of the time, the crime involves more than one robber acting in concert.
- ⇒ Most robbers are males under the age of 25 with a history of violence or repeat offenses.

ROBBERY PREVENTION

Like most crimes, robbery can be defined by three factors: desire, ability and opportunity. You can't control a criminal's desire to rob you or their ability to do so, but you can certainly limit their opportunities for crime.

SUDDEN SNATCHING



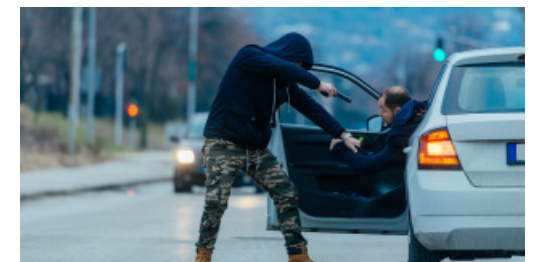
Stop purse snatchers by not giving them an easy opportunity to grab your possessions and run.

- ⇒ Don't carry a purse with shoulder straps. A robber can easily grab the strap and knock you down, causing you injury. Instead, carry a small bag that you can keep tucked securely. Better yet, opt for a fanny pack or backpack type purse that is secured close to the body and harder for a robber to grab and go.

- ⇒ Don't be a target. Avoid carrying large sums of money or other valuables.
- ⇒ Never place your purse in a shopping cart or on a counter. That is an invitation for someone with bad intentions.
- ⇒ Avoid shopping alone. Two or more people are far less of a target than one person shopping alone.

HOME INVASION

- ⇒ Robbers target homes that they think they can get in and out of quickly without being observed. You can make this a harder job for them by using exterior or security lighting so that your home and yard are well-illuminated. Even if you are not home, keep your inside lights on or on a timer so that your house always looks occupied.
- ⇒ Keep your valuables out of sight. Park your car and your expensive zero turn mower out of sight in your locked garage.
- ⇒ Never hide your keys outside. Ever. The fake rocks and dog poo aren't fooling anyone.
- ⇒ Make entry into your home as difficult as possible by adding locks to your windows and deadbolts to your doors. Don't forget the door between your home and garage.
- ⇒ Don't give robbers anywhere to hide. Keep trees and shrubs trimmed so they don't block the line of sight from your windows to the road.



CARJACKING

- ⇒ Be careful when approaching your vehicle. When you get into your vehicle, lock your windows and doors immediately. Do not linger in the area. Drive away.