

# Transition to Adulthood for Young Adults with Visual Impairments: A Timeline for Parents

BSBP provides Pre-Employment Transition Services (Pre-ETS) to students with visual impairments between the ages of 14 and 26. Rehabilitation Professionals will work with you and your student to ensure that these services are provided or arranged. Services can be provided in groups or to students individually. Rehabilitation Professionals will coordinate services with your local Teacher Consultant for the Visually Impaired (TCVI) and/or other local partners.

## Pre-Employment Transition Services/Programs

### Career Exploration

- LIO/BSBP Career Day
- Lean-in Prep
- Intro to Culinary Careers

### Work-Based Learning

- Lean In!
- BEP Summer Work Opportunity Program
- MSU-Spartan Works

### Workplace Readiness

- Fishing with BSBP
- MBAA Sports Ed Camp
- Survivor in the Workplace
- Intro to Work Readiness

### Self-Advocacy

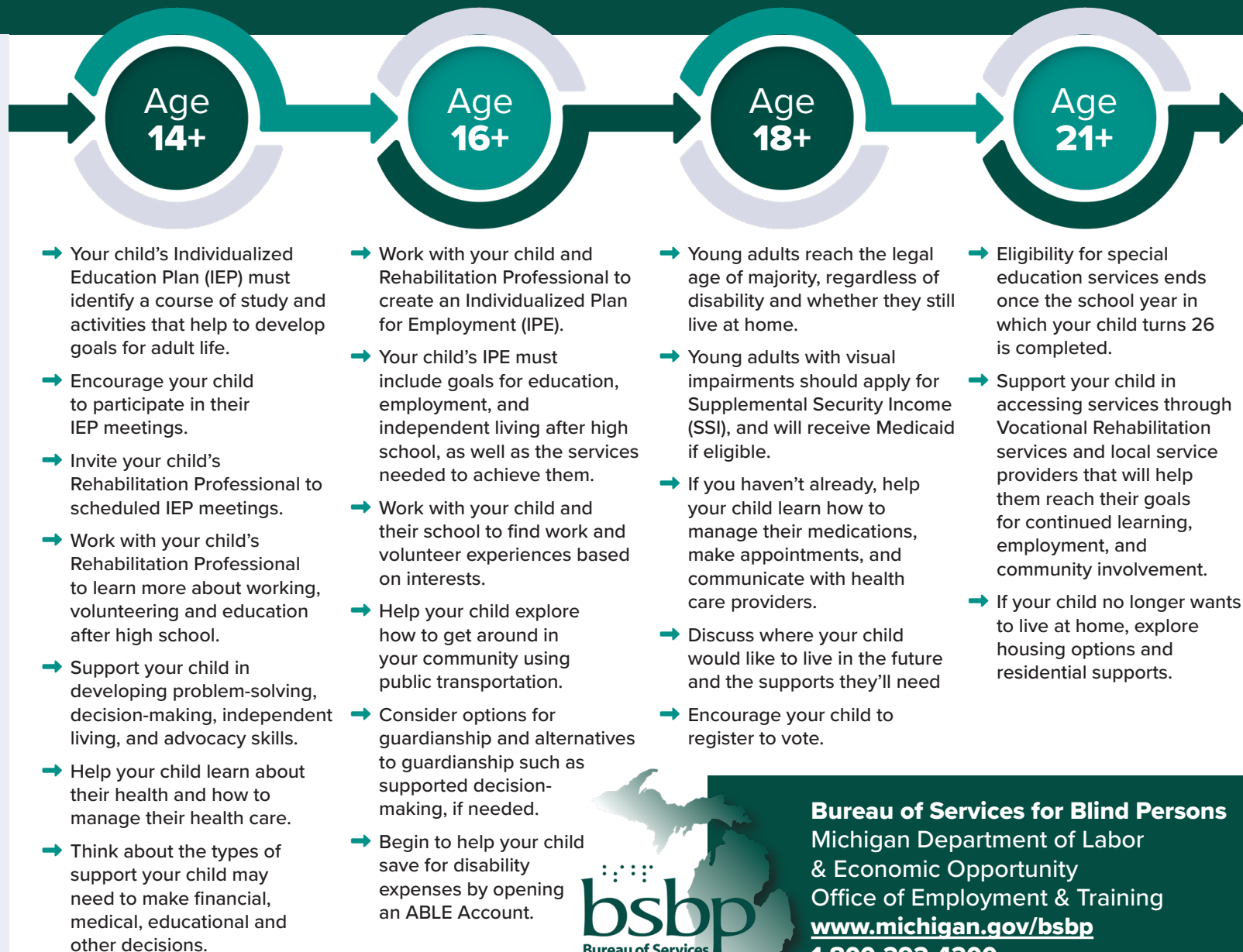
- Take the Lead
- No Barriers
- First Stay Away

### Counseling on Post- Secondary Education

- MI Success
- Post Secondary Readiness Program
- College Prep

### Family Engagement

- Regional Family Engagement Events



**Bureau of Services for Blind Persons**  
Michigan Department of Labor  
& Economic Opportunity  
Office of Employment & Training  
[www.michigan.gov/bsbp](http://www.michigan.gov/bsbp)  
**1-800-292-4200**

# VR Checklist for Students

This checklist can help you and your student prepare for Pre-Employment Transition Services offered by Bureau of Services for Blind Persons (BSBP) Vocational Rehabilitation (VR) Program.

## Applying for Services

### Learn what Vocational Rehabilitation (VR) is.

- Talk to friends and family who have received VR services.
- Check out the BSBP website and the transition services/programs offered throughout the state of Michigan.

### Gather information about your local BSBP office.

- Address:
- Website:
- Phone Number:

### Contact your local BSBP office to apply for services.

- Request accessible materials for orientation and intake appointments.
- Show up to all appointments. If you are unable, let the VR office know in advance.
- Complete and submit the Potentially Eligible Referral Form and Pre-ETS Packet.
- After submission, you will be assigned to a VR counselor. If, after a few weeks, you still have not been notified of your assigned VR counselor, follow up with the VR office.

### Gather information about your VR counselor.

- Name:
- Phone Number:
- Email:

### Collect documentation that shows you have one or more disabilities. Here are some examples of what VR may ask you to provide:

- Eye Report
- Medical Report
- Letter or documentation from your doctor
- Social Security benefit verification letter ([ssa.gov/myaccount/proof-of-benefits.html](https://ssa.gov/myaccount/proof-of-benefits.html))
- Individualized Education Plan (IEP) or 504 Plan from school
- Accommodations letter or plan from college



**Bureau of Services for Blind Persons**  
Michigan Department of Labor  
& Economic Opportunity  
Office of Employment & Training  
[www.michigan.gov/bsbp](http://www.michigan.gov/bsbp)  
**1-800-292-4200**