



Essex County Sheriff's Office

2011 Annual Report

Sheriff Richard C. Cutting

2011 Annual Report

ESSEX COUNTY SHERIFF'S OFFICE

SHERIFF RICHARD C. CUTTING

UNDERSHERIFF MICHAEL D. BADGER

MAJOR DAVID REYNOLDS, CHIEF DEPUTY

MAJOR DAVID DEMARAIS, JAIL ADMINISTRATOR

CAPTAIN THOMAS MURPHY, ASSISTANT JAIL ADMINISTRATOR

702 STOWERSVILLE ROAD
LEWIS, NEW YORK 12950

[HTTP://WWW.CO.ESSEX.NY.US/SHERIFFS/INDEX.HTM](http://www.co.essex.ny.us/Sheriffs/Index.htm)



PREPARED BY CAPTAIN THOMAS W. MURPHY II
MARCH 2012

SHERIFF OF ESSEX COUNTY

Richard C. Cutting

Michael Badger
Undersheriff

David Reynolds
Chief Deputy

David Demarais
Jail Administrator

Thomas Murphy
Assistant Jail Administrator

Shawn LaPier
Civil Officer



Administrative Offices
P.O. Box 68
702 Stowersville Rd
Lewis, NY 12950
(518)873-6902

Civil Office
(518)873-6907

Emergency
911
Fax
(518)873-6940

March 16, 2012

Mr. Randall T. Douglas, Chairman
Essex County Board of Supervisors
Court Street
Elizabethtown, NY 12932

Dear Chairman Douglas:

I am pleased to submit the 2011 Annual Report of the Essex County Sheriff's Office. This report chronicles the activities and statistics of our agency for the previous year. Despite a struggling economy and strict budgets, the Sheriff's Office has found ways to continue to provide support and protection to the citizens of Essex County.

As you are aware, the Sheriff's Office mission is the safety and security of the employees, visitors and inmates in the Public Safety Building as well as the citizens and visitors of Essex County.

We have been successful in 2011 due to our well trained, dedicated staff. Our duties include, but are not limited to: Service of Civil Process; maintaining the correctional facility in a safe and secure manner, including the intake of Federal and County boarders bringing in over \$1.3 million dollars in revenue; community programs for the benefit of all Essex County from youth to our seniors; providing support and assistance to our fellow criminal justice professionals whether they are Federal, State or Local; active participation in Narcotics enforcement and a host of other duties related to criminal justice.

As Sheriff of Essex County, I look forward to continuing to serve the citizens of our county for 2012.

Sincerely,

A handwritten signature in black ink, appearing to read "Richard C. Cutting".

Richard Cutting
Essex County Sheriff

Essex County Sheriff's Office

2011 Annual Report

Code of Ethics for Sheriff

As a Constitutionally elected Sheriff, I recognize that I am given a special trust and confidence by the citizens and employees whom I have been elected to serve, represent and manage.

This trust and confidence is my bond to ensure that I shall behave and act according to the highest personal and professional standards.

In furtherance of this pledge, I will abide by the following Code of Ethics.

I Shall Ensure that I and my employees, in the performance of our duties, will enforce and administer the according to the standards of the US Constitution and applicable State Constitutions and statutes so that equal protection of the law is guaranteed to everyone. To that end I shall not permit personal opinion, party affiliations or other consideration of the status of others to alter or lessen this standard treatment of others.

I Shall Establish, Promulgate and Enforce a set of standards of behavior for my employees which will govern the overall management and operation of my law enforcement function, court related activities and corrections operations of my agency.

I shall not Tolerate nor Condone brutal or inhumane treatment of others by my employees nor shall I permit or condone inhumane or brutal treatment of inmates in my care and custody.

I Strictly Adhere to standards of fairness and integrity in the conduct of campaigns for election, and I shall conform to all applicable statutory standards of election financing and reporting so that the Office of Sheriff is not harmed by the actions of myself or others.

I Shall Follow the accepted principles of efficient and effective administrative and management as the principle criteria for my judgments and decisions in the allocation of resources and services in law enforcement, court related and corrections functions in my office.

I Shall Hire and Promote only those employees or others who are the very best candidates for a position according to accepted standards of objectivity and merit. I shall not permit other factors to influence hiring or promotion practices.

I Shall Ensure that during my tenure as Sheriff, I shall not use the Office of the Sheriff for private gain.

I Accept and Will Adhere to this Code of Ethics. In so doing, I also accept the responsibility for others in my profession to abide by this code.

Essex County Sheriff's Office

2011 Annual Report

History of the Essex County Sheriff's Office

The Office of Sheriff is one of the oldest public offices in government, having its roots in Dutch and English history. The Office came to New York with the Dutch colonists in 1609, the office being then known as the "Schout." When New York became an English colony in 1664, the Duke of York declared that the officer of the Schout would be continued, but the name would be anglicized to "Sheriff," which was the English equivalent of the Schout. By then, the Office of Sheriff was already an ancient public office in England and the 1000th anniversary of the Office was celebrated throughout England in 1992.

The Office of Sheriff was so strong in England and in the colonies that the King and his Governor in the new world restricted the Sheriff to a one year term, so that he could not gain enough power to challenge the King. That precaution notwithstanding, one of the first acts of defiance by the colonists against the King and his hated "Stamp Acts" was carried out by the Sheriff of Kent County, Rhode Island, who led a raid on the King's ship Gaspee and burned it to the waterline. Soon after, when the Declaration of Independence was read publicly for the first time, on July 8, 1776, it was read by the Sheriff of the City of Philadelphia.

The first Constitution of the State of New York, adopted in 1777, continued the Office of Sheriff as an appointed office with a one year term, and with all the duties and powers of the colonial Sheriff. In the second State Constitution adopted in 1821, the Office of Sheriff became an elective office with a three year term, and so with the successive constitutions of 1846 and 1894. The Office of Sheriff remains as a Constitutional office in our current Constitution adopted in 1938, and the provisions relating to the Office may be found in the New York State Constitution, Article 13, Section 13. One notable Sheriff of New York State is President Grover Cleveland. President Cleveland served as Sheriff of Erie County from 1870 until 1873, before moving on to becoming Mayor of Buffalo and Governor of New York.

Since 1799, fifty (50) men have held the position of Sheriff for Essex County. With Sheriff Thomas Stower being the first record Sheriff of Essex County to the current Sheriff Richard Cutting.



Essex County Sheriff's Office

2011 Annual Report

Essex County Sheriff's Office

Jail Division

The Essex County Jail is staffed with fifty-six (56) officers and six (6) shift supervisors. These 62 sworn officers, a Division of Criminal Justice Services certified staff, work a



schedule that must cover a set amount of positions twenty-four hours (24) a day, seven (7) days a week. This includes holidays; our staff is required to work these days to maintain the safety of Essex County.

Overseeing the jail shift supervisors is the Assistant Jail Administrator and the Jail Administrator. These men and women supervise a daily average inmate population of 80, with a high inmate population count of 90 and a low of 71. **For a total of 29,200 inmate days.** The local population of

sentenced inmates has increased 42.9% and unsentenced increased 22.6%. However the federal boarded inmates has decreased 34.3%.

In 2011, the Essex County Jail processed 671 inmates. Of these inmates, 241 were housed for other jurisdictions, to include: US Marshall's Service, both New York and Vermont Districts, Department of Homeland Security, Franklin County Sheriff's Office, Jefferson County Sheriff's Office, Clinton County District Attorney's Office, NYS Parole, as well as various for profit prisoner transport services. **Housing inmates for these jurisdictions has generated housing revenue of \$1,311,420.00.** The remainder of 430 inmates were local inmates, remanded to the custody of the Sheriff by Local Criminal Courts and Superior Courts.

The Essex County Jail prepares meals for all inmates incarcerated in the jail. Minimum standards require three meals per day and one of them must be a hot meal. **In 2011, 86,509 meals were prepared at a cost of \$2.03 per meal.**



Included in the contract for housing inmates for the US Marshall's Service is transporting inmates to and from Federal District Court in Albany and Plattsburgh. We will also transport to and from FCI Raybrook. This is reimbursable to the county; **in 2011 the US Marshalls Service paid the Essex County Sheriff's Office \$31,393.72, in transportation costs.** The Essex County Sheriff's Office is also responsible for transporting local inmates to court appearances in town and county courts, medical appointments, etc. **In 2011 the Essex County**

Essex County Sheriff's Office

2011 Annual Report

Sheriff's Office safely accomplished 523 inmate transports. Many of these transports had more than one inmate, and most of the transports also require two transport officers.

As a county jail, we are legally responsible to hold sentenced and un-sentenced inmates. In 2011, eighty-two (82) males and eight (8) females were sentenced to the Essex County Jail. The remaining 340 were held awaiting trial or further court action. These inmates are from the local criminal courts, county court and family court. As part of the court orders, bail is set by judges. This bail is to ensure that the defendant re-appears in court, not as a punishment. The Essex County Jail took in and processed \$215,460 in cashbail for 2011. The jail also accepts credit cards through a contract company GovPayNow, using this service we

have been able to process over \$111,700 in bail.



The Essex County Jail has a set of rules and regulations that the inmates must follow. Failure to follow these rules can result in in-house disciplinary charges; punishment can be lost of privileges, loss of good time, keeplock, etc. Additional criminal charges can also be filed. In-house charges are handled by a shift supervisor and a panel of correction officers. If found guilty, a \$25.00

surcharge can be placed on the inmate. In 2011, seventy-seven (77) inmates had in-house charges filed on them. Of these charges seventy (70) inmates were found guilty of the charges.

Inmates have the right to file grievances for anything they feel is an injustice. In 2011, 161 grievances had been filed and 146 of the grievances filed were handled in-house by facility staff. The other fifteen (15) were sent to the Commission's Citizen Review Board in Albany and the grievance was denied by this review board.

Reportable Incidents

The Essex County Jail has established a formal reportable incident system to ensure that all reportable incidents required by regulation are reported in a consistent systematic manner to the Commission of Correction. These reportable incidents include major or minor incidents, attempted suicides, individual inmate disturbances, assaults, fires, etc. **In 2011 the Essex County Jail had four (4) reportable incidents.** All these incidents only involved one inmate and no injuries to officers. During two (2) of the incidents, the inmate involved was restrained using chemical agents (pepper spray).

Essex County Sheriff's Office

2011 Annual Report

Inmate Programs

Inmates housed at the Essex County Jail are allowed to have two one-hour visits per week. These visits are on a first come first serve basis on scheduled hours on Saturday and Sunday. In 2011, 3,324 visitors came to visit inmates. This does not include professional visits for inmates. Professional visitors are: clergy, attorneys, counselors, etc.

Civilian staff and volunteers provide other services for inmates, to include, but not limited to: medical services, GED, substance abuse counseling, anger management, literacy volunteers, etc.

GED

The Education Program at the Essex County Correctional Facility is administered by the Elizabethtown - Lewis Central School District. They contract the services out to a provider, David Johnston, with over twenty years experience in correctional education. The purpose of contracting the services is to provide all required programs and to meet state mandates in a cost effective manner. The program is funded by federal and state programs designed specifically for incarcerated youths. There is no direct cost either to



Essex County or to Elizabethtown-Lewis CSD. Inmates housed from other counties or the federal system increase revenues with no additional expense. Supplemental materials and equipment are purchased using funds from the inmate commissary account.

Any inmate under the age of twenty-one who does not have a high school diploma is required to attend school. Inmates over twenty-one are permitted to attend if they choose to do so. This exceeds the state mandate which only requires that they have the opportunity to attend school. This decision was made because of the fact that most of these inmates reside in Essex County and obtaining a high school diploma is an important first step in becoming a productive citizen. Inmates also receive instruction in personal finances, post-secondary education and training, civics, parenting, and entrepreneurship. Every student meets with a representative from One Work Source to insure that transition and support services are provided upon release. An inmate who is a currently enrolled student at an area school district continues his schoolwork while incarcerated. The program instructor obtains assignments and materials from the home school district and then returns completed assignments. The Essex County Correctional Facility has implemented a family literacy program as part of Parenting Skills. This allows inmates to develop important parenting skills and maintain healthy relationships with their children while incarcerated.

Essex County Sheriff's Office

2011 Annual Report

The education program serves 5-10 students daily and 30-50 students per school year. When funds are made available, a summer session is held. Elizabethtown-Lewis CSD has applied to be a GED Testing Center so that inmates can take their GED test while incarcerated. Currently, working with One Work Source, inmates are scheduled to take their examination at area testing centers at the first available date after release.

Education is an important component of any program designed to reduce recidivism and help inmates become productive, taxpaying citizens. During the most recent school year, inmates have completed the coursework necessary to obtain their high school diploma, many have received their GED, one completed their GED and enrolled at community college, and most have returned to the work force. Every inmate with the need has been provided the opportunity to advance themselves.

In 2011, four (4) inmates completed the requirements and passed the testing to receive their GED.

St. Joseph's

St. Joseph's Addiction Treatment and Recovery Center provides a program at the Essex County Jail. This program had 165 referrals in 2011. In 2011, 1140 service sessions were provided to the inmates of Essex County.

Brief Screening:	128
Evaluations:	9
Individual:	166
Group:	802
Other:	35



Treatment services were delivered with one (1) weekly men's group for each of the two male housing units with available individual sessions available. 2011 saw an increase in the female inmate population, creating an increased interest in the program.

Essex County Mental Health also provides services to the inmates. A case worker comes to the jail to be meet with numerous inmates twice a week. We also utilize the Mental Health On-Call services for inmate mental health crisis.

VINE



The Essex County Jail participates in a program sponsored by the New York State Sheriff's Association called VINE, which stands for Victim Information and Notification Everyday. Victims of crime can call a toll-free number or visit the website for information on the incarceration status of their perpetrator. Here, the victim can register to be notified once an inmate is

Essex County Sheriff's Office

2011 Annual Report

released or their custody status changes. The victim will be notified by telephone or email. This has also become a useful tool for different agencies to locate inmates throughout the state and to be notified of their release. **In 2011, 253 victims or other agencies registered to be notified about a release of an inmate. VINE made 61 notifications by telephone and 288 notifications by email.** This number does not include the lookup of inmates. The website allows people to lookup information about the inmate, without having to register. The contact information for VINE can be accessed through the Essex County Sheriff's Office website. Statewide VINE, received 129,618 calls to determine the custody status of inmates. Web searches through www.vinelink.com and www.vinewatch.com generated 1,180,948 searches for incarcerated inmates.

DNA Databank

In 1996, New York State created legislation to collect and establish a DNA databank. This law has been expanded in recent years to include all persons convicted of any NYS Penal Law felony and certain misdemeanors to submit a DNA sample to the databank. This is done using a mouth swab. The Sheriff's Office serves as one of the collection agencies in the county. **In 2011, nineteen (19) DNA samples were collected** and sent to the Division of Criminal Justice Services in Albany to be processed and placed on file. There is pending legislation to require a DNA sample taken from all people convicted of any crime.

Training



In order to maintain a professional, safe place to work, the employees of the Sheriff's Office, sworn and non-sworn, go through training. This training consists of, but is not limited to, updates in policy and procedures, NYS Penal Law Article 35 training, defensive tactics, and PESH/OSHA requirements. **In 2011, the employees of the Essex County Sheriff's Office received 1,302 hours of training.**

These hours do not include the PESH/OSHA training courses that the officers complete on-line. Training is being developed to help reduce the amount of classroom time required, by using on-line courses. These on-line courses allow the staff to take classes while working their regular shifts. The Sheriff's Office also has ten instructors that have been certified by the Division of Criminal Justice Services. Having these instructors enables us to conduct our own Basic Corrections Courses, saving travel costs to other jurisdictions to receive this training. In October of 2011, we completed our seventh training session for Basic Corrections. The Federal government has a grant program called State Criminal Alien Assistance Program.



Essex County Sheriff's Office

2011 Annual Report

This program allows county jails to be reimbursed for some of the costs of housing undocumented criminal aliens who have committed crimes in the United States. This money is used to help supplement the training of staff. **In 2011, the Essex County Jail received \$2,914.00.**

Technology

In late 2009, the Essex County Sheriff's Office launched its new and improved website. The main purpose was to keep the public informed about the functions of the Sheriff's Office. This website is updated on a regular basis, keeping an outstanding warrant list updated, press releases for arrests made by Sheriff's Deputies, monthly reports and contact information for the different offices. **In the 2011, we received over 44,000 web hits.**

Patrol Division

The Essex County Sheriff's Office has sworn police officers who serve Civil Processes and enforce the laws of Essex County and the State of New York. **In 2011, the Essex County Sheriff's Office made 170 arrests, issued 508 uniform traffic tickets for NYS Vehicle and Traffic Law violations and served 401 civil processes.**



The Essex County Sheriff's Office responded to 468 complaints. These complaints range from incidents of bad checks, domestic violence calls, animal complaints, etc.

The Essex County Sheriff's Office also received funding from the Department of Homeland Security to participate in Operation Spyder. This funding allowed us to work with the US Border Patrol at the check point in North Hudson.

The Essex County Sheriff's Office also has deputies certified to participate with the Essex County Hazmat team. These deputies attend the regular training with the hazmat team and are prepared to respond to a hazmat situation.

The Sheriff's Office also assists area communities with town parades, traffic control for events, etc. In 2011, the Sheriff's Office assisted with the Lake Placid Ironman competition.

Flooding and Hurricane Irene

In April of 2011, Essex County sustained severe spring flooding. Many towns were affected especially the low lying areas near Lake Champlain, along with rivers and streams spilling over their banks. The spring floods required members of the Essex County Sheriff's Office to be on patrol assisting the people affected by these waters. Many road closures occurred during this time creating detours, the Sheriff's Office also escorted school buses through these detours to ensure they could transport students safely. The Essex County Sheriff's Deputies provided 227.5 hours of patrols to these affected areas, including 110 hours of overtime. All this time is reimbursable from the federal government.

Essex County Sheriff's Office

2011 Annual Report

At the end of August 2011, the county again suffered a natural disaster, this time it was Hurricane Irene. This storm caused more damage than the spring flooding and affected a larger area. Towns in the county had very limited ways in or out and there was wide scale damage to local homes and businesses. The county was almost isolated from the outside because of the damage. This storm was the first time the Emergency Operations Center at the Public Safety Building was staffed with members from emergency response agencies from around the nation and state. With the road damage, closures, and abandoned homes Deputy Sheriff's were out in the communities ensuring the safety of the citizens of Essex County. To accomplish this, 367 hours of patrols, including 111 hours of overtime were utilized. This money is reimbursable from the federal government.

Sex Offender Compliance Checks

In June of 2011, with the assistance of the US Marshall's Service, Lake Placid, Moriah and Ticonderoga Police Departments, the Essex County Sheriff's Office conducted a check of all Sex Offenders residing in Essex County. **Of the 105 registered sex offenders checked, all were in compliance.** This is also an on-going process, where compliance checks are made regularly at random intervals.

Prescription Medication Turn In



The Essex County Sheriff's Office participated once in again in the Drug Enforcement Administration's prescription medication turn in program. This was a no questions asked program. Sheriff's Deputies were in the Public Safety Building lobby and other locations throughout the county for people to turn in any medication they wanted to dispose of, prescription and/or over the counter drugs.

D.A.R.E.

The Essex County Sheriff's Office also has one D.A.R.E. Officer who visits the schools within the county and teaches to the fifth grade students. At the end of the course, students have a graduation ceremony.



Child Safety Seats



In cooperation with the Governor's Traffic Safety Committee, the Essex County Sheriff's Office has two child safety seat technicians who inspect and properly install safety seats in cars. The technicians also teach the parents how to properly install the seats. In 2011, the Sheriff's Office held and

sponsored thirteen child safety seat events. **The technicians inspected sixty-six (66) seats**

Essex County Sheriff's Office

2011 Annual Report

and found nineteen (19) of these seats unsatisfactory, which were destroyed. Of the sixty-six seats inspected, only six (6) had been installed correctly. Deputies gave away thirty-three (33) new seats.

Operation Safe Child

The Essex County Sheriff's Office participates in the Division of Criminal Justice Services program Operation Safe Child. This program provides two identification



cards, one for the child to carry on them, and one for the parents to carry. DCJS also maintains a database, which can be used to help locate missing children. In 2011, the Essex County Sheriff's Office submitted over 1200 files to DCJS.

Essex County Drug Task Force

The Essex County Sheriff's Office is a member of the Essex County Drug Task Force, along with the Lake Placid, Ticonderoga and Saranac Lake Police Departments, New York State Police, Vermont National Guard, DEA and the US Border Patrol. The Essex County Drug Task Force works in conjunction with the Franklin, Clinton, Warren and Washington County Drug Task Forces, in addition to the Albany Police Department, NYS Bureau of Controlled Substances and Cnet Albany. The task force opened seventy-seven (77) new cases in 2011. Fifty (50) of these cases were closed by arrest and fifteen (15) were closed with no defendant. 143 pills and 823 marijuana plants were seized during the investigations.

Civil Division

By state laws, the Essex County Sheriff's Office is required to have a Civil Office. Its purpose and function is to serve and execute the various legal processes issued not only by and for the several non-criminal courts of the state and its subdivisions, but also for the legal community and the general public. Departmental and divisional policies and procedures are consistent with New York State and court case law.

Deputy Sheriffs are public officers entrusted to perform specific duties that contribute to the administration of justice. The purpose of service of civil process is to give notice to a defendant of the commencement of a legal action or a proceeding. Although any private citizen over 18 years of age can serve processes if they are not party to the action, Sheriff's Offices are asked to serve processes because of their traditionally good record keeping practices and professional service. In 2011, the Civil Office handled \$772,813.48. This money includes bail fees processed, wage garnishments and fees for civil processes.

Essex County Sheriff's Office

2011 Annual Report

Community Involvement



The Essex County Sheriff's Office has created a Benevolent Association. This association is made up of both Correction Officers and Deputy Sheriffs. The original creation was for a scholarship to be given to students at Essex County schools who are interested in pursuing a higher education in Criminal Justice. The school officials recommend a student from their school to receive this award. **In 2011, the Essex County Sheriff's Office Benevolent Association awarded five (5) scholarships:**

Alison Baumbach, Lake Placid Central School
Sean Lawrence, Saranac Lake Central School
Ryan Mascaranas, Moriah Central School
John Pollack, Willsboro Central School
Ryan Wendall, Ticonderoga Central School

The Benevolent Association is run by Sergeant Chris Thwaits, President; Officer Lloyd LaMotte, Vice President; Sergeant Stephen Duso, Treasurer. These three people donate time and effort to setup fundraisers, such as basketball, softball and golf tournaments to keep the scholarship fund going. In 2011 the Benevolent Association members participated in the second annual Polar Plunge for Special Olympics, this the entire event raised over \$40,000 for the Special Olympics of New York. The Benevolent Association also collected toys for Christmas and donated them to organizations so that less fortunate kids could have a good Christmas. New in 2011, the Benevolent Association worked with the United States Marine Corps, Toys for Tots and held an event they called Milk and Cookies with Santa. At this event over 100 children came to see Santa Claus and they received a present and personalized ornament.



Essex County Sheriff's Office

2011 Annual Report

Promotions and New Hires

Jail Administrator, Major Michael Badger was promoted to Undersheriff

Assistant Jail Administrator, Captain David Demarais to Jail Administrator

Lieutenant Thomas Murphy II to Assistant Jail Administrator

Corrections Sergeant Scott Gowdy to the first ever Essex County Corrections, Lieutenant

Corrections Sergeant Christopher Thwaits, was moved from provisional Sergeant to permanent appointment as Sergeant

Corrections Officer Stephen Duso was promoted to Corrections Sergeant

Corrections Officer Robert Budwick was promoted to Deputy Sheriff

Deputy Jessica O'Connor has taken over as Training Coordinator

James Farnum of Lake Placid was hired as a Deputy Sheriff

Heather Genier of Ticonderoga was hired as a Deputy Sheriff

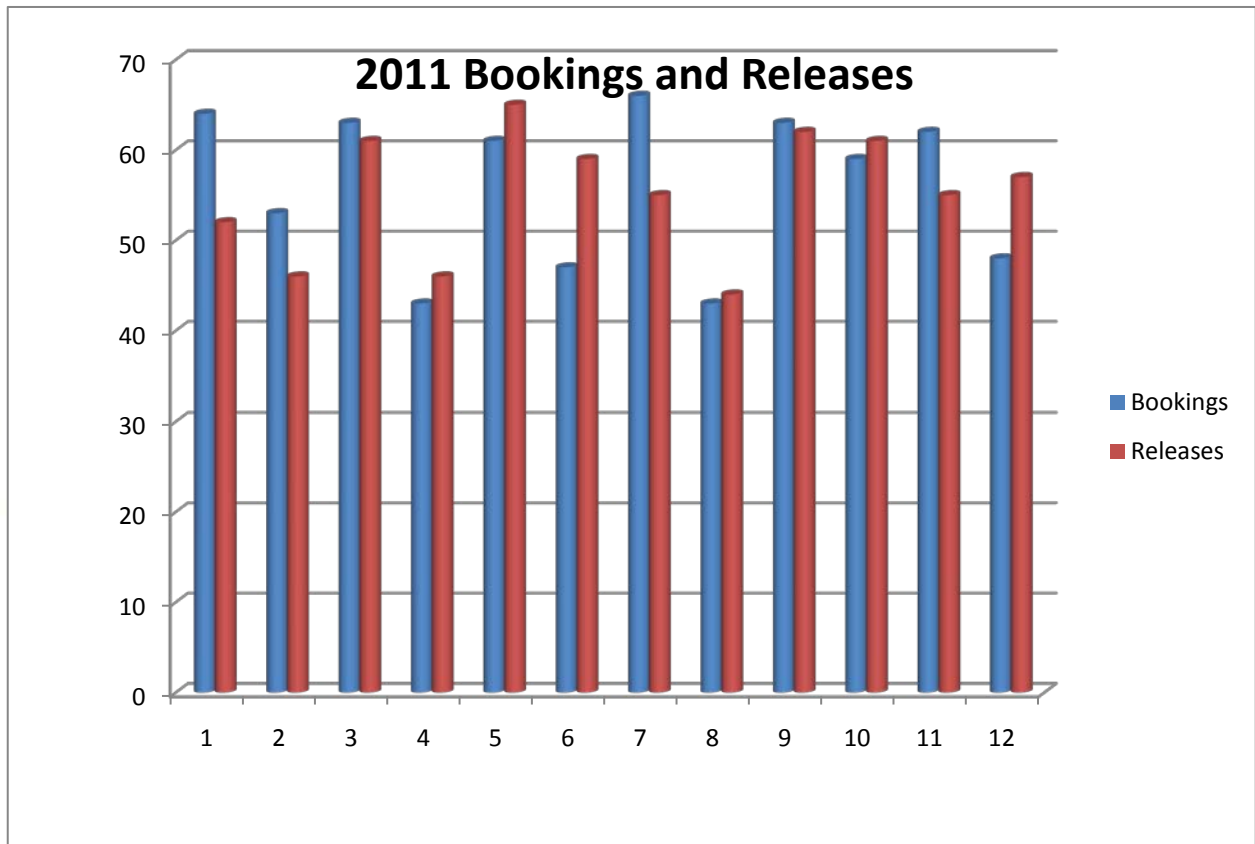
Mark Bruce was hired as a Corrections Officer

Michelle Thwaits was hired as a Corrections Officer

Joshua Genier was hired as a Corrections Officer

Essex County Sheriff's Office

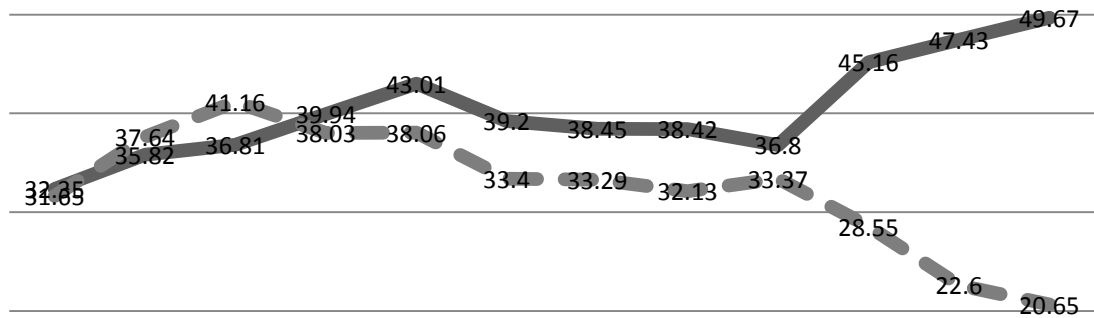
2011 Annual Report



Essex County Sheriff's Office

2011 Annual Report

Local Inmates vs Federal Inmates 2011



	January, 2011	February, 2011	March, 2011	April, 2011	May, 2011	June, 2011	July, 2011	August, 2011	September, 2011	October, 2011	November, 2011	December, 2011
Local	32.35	35.82	36.81	39.94	43.01	39.2	38.45	38.42	36.8	45.16	47.43	49.67
Federal	31.65	37.64	41.16	38.03	38.06	33.4	33.29	32.13	33.37	28.55	22.6	20.65

Essex County Sheriff's Office

2011 Annual Report

Road Patrol Incidents handled by Town

Town	Number of Incidents
Chesterfield	15
Crown Point	16
Elizabethtown	96
Essex	10
Jay	16
Keene	12
Lewis	50
Minerva	2
Moriah	114
Newcomb	1
North Elba	17
North Hudson	11
Schroon Lake	4
St Armand	4
Ticonderoga	16
Westport	31
Willsboro	31
Wilmington	9
County	13
Total	468

Essex County Sheriff's Office
Lewis, New York 12950
Sheriff's Annual Report of Year 2011

I. Inmates in Custody End of Last Year Midnight 01/01/2011

	MALE		FEMALE		TOTAL	
1. County Census ----->>		29		2		31
2. Housed In ----->>		30		5		35
3. Total Census ----->>		59		7		66
4. Housed Out ----->>	1		0		1	
5. Out Count ----->>	0		0		0	
6. Total Count ----->>	1	1	0	0	1	1
7. Count ----->>		58		7		65

II. Inmates Received from Courts of this County this Year (Co. Adm)

		MALE	FEMALE	TOTAL
A. Sentenced to this facility (initial entry)				
1. Convicted of Felony ----->>		7	0	7
2. Convicted of a Misdemeanor ----->>		51	5	56
3. Convicted of Other Offenses ----->>		12	0	12
4. Subtotal ----->>		70	5	75

		MALE	FEMALE	TOTAL
B. Sentenced to this facility (Status Changed - unsentenced - sentenced)				
1. Convicted of Felony ----->>		0	0	0
2. Convicted of a Misdemeanor ----->>		10	1	11
3. Convicted of Other Offenses ----->>		2	2	4
4. Subtotal ----->>		12	3	15

		MALE	FEMALE	TOTAL
C. Total <u>Sentenced to this Facility</u>				
1. Add A(4) + B(4) from above ----->>		82	8	90

		MALE	FEMALE	TOTAL
D. Remanded to <u>this</u> Facility (by securing order)				
1. Held for Felony ----->>		145	23	168
2. Held for Misdemeanor ----->>		123	27	150
3. Held for Other Offenses ----->>		29	8	37
4. Total Remanded to this Facility ----->>		297	58	355

		MALE	FEMALE	TOTAL
E. Total County Inmate Admissions this Year				
1. Add A(4) + D(4) from above ----->>		367	63	430

		MALE	FEMALE	TOTAL
III. Inmates Admitted <u>and Housed for Other</u> Jurisdictions This Year (Housed In)				
1. Other County's Inmated (SJO) ----->>		28	31	59
2. State Inmates ----->>		14	1	15
3. Federal Inmates ----->>		161	7	168
4. Other ----->>		0	0	0
5. Total - Housed for Other Jurisdictions ----->>		203	39	242

		MALE	FEMALE	TOTAL
IV. Total Inmates Recieved in this Facility from all Sources				
1. Add Item II (E) and Item III (5) ----->>		570	102	672

V. Inmates Discharged from this Facility this Year

A. County Inmates

1. Expiration of Sentence ----->>
2. Released/Transferred by order of Court ----->>
3. Transferred to DOCS (States Readies) ----->>
4. Other (Death/Escape) ----->>
5. Total - County Inmates Discharged ----->>

MALE	FEMALE	TOTAL
92	11	103
222	49	271
35	2	37
0	0	0
349	62	411

B. Other than County Inmates

1. Bonders Discharged (SJO) ----->>
2. Parole Violators (Returned to DOCS) ----->>
3. Parole Violators (Releases from detainer) ----->>
4. Federal ----->>
5. Other (Death/Escape/Transits/etc) ----->>
6. Total - Other than County Inmates Discharged ----->>

MALE	FEMALE	TOTAL
39	26	65
12	0	12
1	0	1
165	9	174
0	0	0
217	35	252

C. Total Inmates Discharged from This Facility

1. Add Item A(5) and Item B(6) ----->>

MALE	FEMALE	TOTAL
566	97	663

VI. Inmates Temporarily Housed Out To other Jurisdictions this Year

A. Housed Out to:

1. Other Counties (SJO) ----->>
2. Mental Health Facility ----->>
3. Admitted to Medical Hospital ----->>
4. Other ----->>
5. Total Housed Out ----->>

MALE	FEMALE	TOTAL
2	0	2
6	0	6
0	0	0
2	0	2
10	0	10

B. Returned From:

1. Other Counties (SJO) ----->>
2. Mental Health Facility ----->>
3. Admitted to Medical Hospital ----->>
4. Other ----->>
5. Total Returned ----->>

MALE	FEMALE	TOTAL
10	0	10
1	0	1
0	0	0
0	0	0
11	0	11

VII. Inmates in Custody End of This Year Midnight

12/31/2011

1. County Census ----->>
2. Housed In ----->>
3. Total Census ----->>
4. Housed Out ----->>
5. Out Count ----->>
6. Total Count ----->>
7. Count ----->>

MALE	FEMALE	TOTAL
47	3	50
16	9	25
63	12	75
0	0	0
1	0	1
1	0	1
62	12	74

Table 1

**Length of Sentence To This Facility
County Inmates**

Days	MALE	FEMALE	TOTALS
1-3	1	1	2
4-6	4	2	6
7-9	3	1	4
10-12	0	0	0
13-15	9	1	10
16-18	0	0	0
19-21	3	0	3
22-24	0	0	0
25-27	0	0	0
28-30	7	1	8
31-33	1	0	1
34-36	0	0	0
37-39	0	0	0
40-42	1	0	1
43-45	0	1	1
46-48	0	0	0
49-51	0	0	0
52-54	0	0	0
55-57	0	0	0
58-60	7	0	7
61-63	0	0	0
64-66	0	0	0
67-69	0	0	0
70-72	1	0	1
73-75	0	0	0
76-78	0	0	0
79-81	0	0	0
82-84	0	0	0
85-87	0	0	0
88-90	12	0	12
91-93	0	0	0
94-96	0	0	0
97-99	0	0	0
100-102	0	0	0
103-105	0	0	0
106-108	0	0	0
109-111	0	0	0
112-114	0	0	0
115-117	0	0	0
118-120	5	0	5
121-123	0	0	0
124-126	0	0	0
127-129	0	0	0
130-132	0	0	0
133-135	0	0	0
136-138	0	0	0
139-141	0	0	0
142-144	0	0	0
145-147	0	0	0
148-150	3	0	3
151-153	0	0	0
154-156	0	0	0
157-159	1	0	1
160-162	0	0	0
163-165	0	0	0
166-168	0	0	0
169-171	0	0	0
172-174	0	0	0
175-177	0	0	0
178-180	11	0	11
181-183	2	0	2
Sub. Tot	71	7	78

Days	MALE	FEMALE	TOTALS
184-186	1	0	1
187-189	0	0	0
190-192	0	0	0
193-195	0	0	0
196-198	0	0	0
199-201	0	0	0
202-204	0	0	0
205-207	1	0	1
208-210	0	0	0
211-213	0	0	0
214-216	0	0	0
217-219	0	0	0
220-222	0	0	0
223-225	0	0	0
226-228	0	0	0
229-231	0	0	0
232-234	0	0	0
235-237	0	0	0
238-240	1	0	1
241-243	0	0	0
244-246	0	0	0
247-249	0	0	0
250-252	0	0	0
253-255	0	0	0
256-258	0	0	0
259-261	0	0	0
262-264	0	0	0
265-267	0	0	0
268-270	1	0	1
271-273	0	0	0
274-276	0	0	0
277-279	0	0	0
280-282	0	0	0
283-285	0	0	0
286-288	0	0	0
289-291	0	0	0
292-294	0	0	0
295-297	0	0	0
298-300	0	0	0
301-303	0	0	0
304-306	0	0	0
307-309	0	0	0
310-312	0	0	0
313-315	0	0	0
316-318	0	0	0
319-321	0	0	0
322-324	0	0	0
325-327	0	0	0
328-330	0	0	0
331-333	0	0	0
334-336	0	0	0
337-339	0	0	0
340-342	0	0	0
343-345	0	0	0
346-348	0	0	0
349-351	0	0	0
352-354	0	0	0
355-357	0	0	0
358-360	0	0	0
361-363	0	0	0
364-366	7	1	8
Sub. Tot	11	1	12

of Intermittent Sentences

MALEFEMALE151

Column 1 Sub. Tot.

TOTAL

71

7

78

82

8

90

TOTALS MUST BE EQUAL TO ITEM II - C, ON PAGE 1

Table 2

Length of Stay To This Facility

County Inmates

Days	MALE	FEMALE	TOTALS
1-3	137	38	175
4-6	43	9	52
7-9	30	2	32
10-12	9	1	10
13-15	12	3	15
16-18	5	0	5
19-21	10	1	11
22-24	4	0	4
25-27	1	0	1
28-30	6	0	6
31-33	3	0	3
34-36	5	0	5
37-39	4	2	6
40-42	3	0	3
43-45	2	1	3
46-48	2	0	2
49-51	1	1	2
52-54	1	0	1
55-57	5	0	5
58-60	9	0	9
61-63	2	0	2
64-66	0	1	1
67-69	2	0	2
70-72	2	0	2
73-75	0	0	0
76-78	4	0	4
79-81	1	0	1
82-84	0	0	0
85-87	0	0	0
88-90	1	0	1
91-93	1	0	1
94-96	0	0	0
97-99	3	0	3
100-102	1	0	1
103-105	1	0	1
106-108	2	1	3
109-111	1	0	1
112-114	1	0	1
115-117	3	0	3
118-120	2	0	2
121-123	2	0	2
124-126	1	0	1
127-129	1	0	1
130-132	1	0	1
133-135	2	0	2
136-138	0	0	0
139-141	0	0	0
142-144	1	0	1
145-147	0	0	0
148-150	1	0	1
151-153	0	0	0
154-156	1	1	2
157-159	0	0	0
160-162	0	0	0
163-165	0	0	0
166-168	0	0	0
169-171	0	0	0
172-174	0	0	0
175-177	1	0	1
178-180	1	0	1
181-183	0	0	0
Sub. Tot	331	61	392

Days	MALE	FEMALE	TOTALS
184-186	0	0	0
187-189	0	0	0
190-192	0	0	0
193-195	1	0	1
196-198	0	0	0
199-201	0	0	0
202-204	0	0	0
205-207	0	0	0
208-210	0	0	0
211-213	0	0	0
214-216	1	0	1
217-219	1	0	1
220-222	0	0	0
223-225	0	0	0
226-228	0	0	0
229-231	0	0	0
232-234	1	0	1
235-237	2	0	2
238-240	0	0	0
241-243	4	0	4
244-246	0	0	0
247-249	0	0	0
250-252	0	0	0
253-255	0	0	0
256-258	0	1	1
259-261	1	0	1
262-264	1	0	1
265-267	1	0	1
268-270	0	0	0
271-273	0	0	0
274-276	0	0	0
277-279	0	0	0
280-282	0	0	0
283-285	1	0	1
286-288	1	0	1
289-291	0	0	0
292-294	0	0	0
295-297	0	0	0
298-300	0	0	0
301-303	0	0	0
304-306	0	0	0
307-309	0	0	0
310-312	0	0	0
313-315	0	0	0
316-318	1	0	1
319-321	0	0	0
322-324	0	0	0
325-327	0	0	0
328-330	0	0	0
331-333	0	0	0
334-336	0	0	0
337-339	0	0	0
340-342	0	0	0
343-345	0	0	0
346-348	0	0	0
349-351	0	0	0
352-354	0	0	0
355-357	0	0	0
358-360	0	0	0
361-363	0	0	0
364-366	0	0	0
367+	2	0	2
Sub. Tot	18	1	19

TOTALS MUST BE EQUAL TO ITEM V-A, ON PAGE 2

Column 1 Sub. Tot.

TOTAL

331

61

392

349

62

411

**County Inmates
Age When Admitted**

Table 3

AGE	MALE	FEMALE	TOTALS
< 16	0	0	0
16	6	0	6
17	14	1	15
18	9	2	11
19	14	0	14
20	16	1	17
21	23	4	27
22	16	3	19
23	12	2	14
24	17	2	19
25	12	7	19
26	19	2	21
27	14	2	16
28	14	1	15
29	14	1	15
30	11	2	13
31	5	5	10
32	8	2	10
33	8	1	9
34	7	1	8
35	10	3	13
36	4	0	4
Sub. Tot	253	42	295

AGE	MALE	FEMALE	TOTALS
37	3	1	4
38	4	4	8
39	10	1	11
40	14	0	14
41	13	3	16
42	2	1	3
43	0	3	3
44	1	0	1
45	3	0	3
46	6	2	8
47	11	0	11
48	3	1	4
49	7	1	8
50	3	0	3
51	5	0	5
52	7	0	7
53	1	0	1
54	3	1	4
55	1	0	1
56	3	0	3
57	1	1	2
58>	13	2	15
Sub. Tot	114	21	135

Column 1 Sub. Tot.	253	42	295
TOTAL	367	63	430

**Table 4
RACE**

RACE	MALE	FEMALE	TOTALS
White	328	58	386
Black	22	1	23
Am. Ind.	3	0	3
Asian	0	1	1
Other	14	3	17
Totals	367	63	430

Table 5

ETHNIC ORIGIN	MALE	FEMALE	TOTALS
Hispanic	23	2	25
Non-Hispanic	344	61	405
Totals	367	63	430

AGE, LITERACY, RACE, & ETHNIC ORIGIN TOTALS MUST EQUAL ITEM II - E, ON PAGE 1.

OF TIMES COMMITTED TO THIS FACILITY

Table 6

	MALE		FEMALE		TOTALS	
	Sen.	Unsen.	Sen.	Unsen.	Sen.	Unsen.
1st	80	260	8	56	88	316
2nd	2	30	0	2	2	32
3rd	0	4	0	0	0	4
4th	0	2	0	0	0	2
5th	0	1	0	0	0	1
6th	0	0	0	0	0	0
7th	0	0	0	0	0	0
8th	0	0	0	0	0	0
9th	0	0	0	0	0	0
10+	0	0	0	0	0	0
Total	82	297	8	58	90	355