

Essex County Sheriff's Department & Jail 2000 Annual Operating Report

FRIDAY

PRESS-REPUBLICAN

The Hometown Newspaper of Clinton, Essex and Franklin Counties

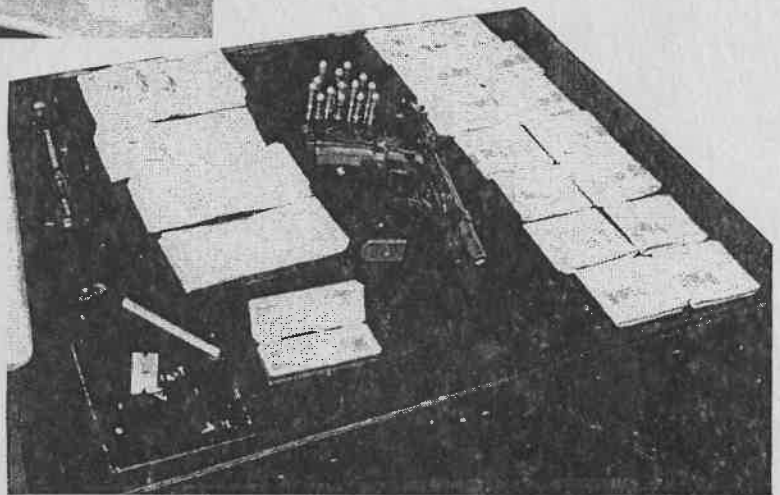
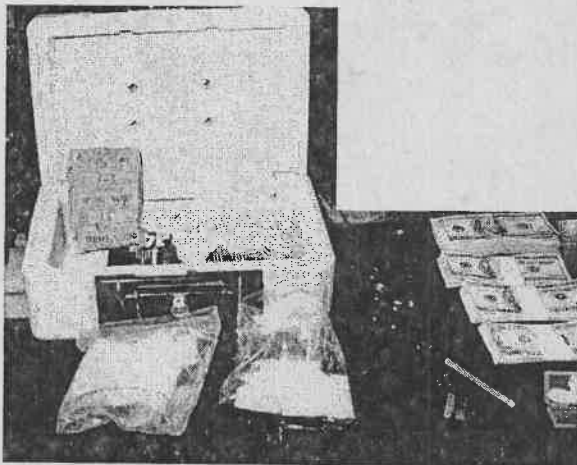
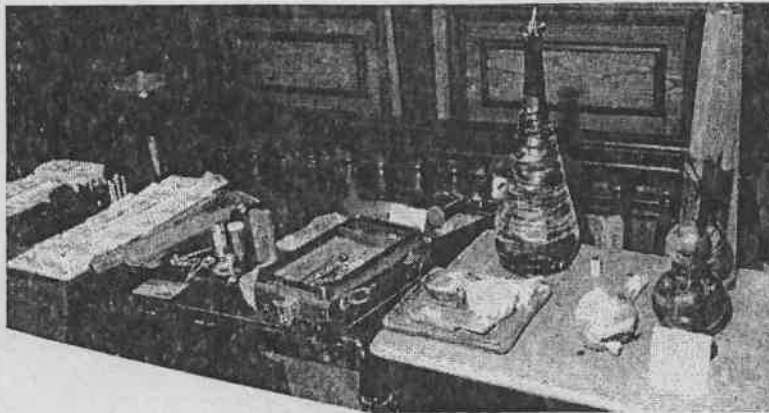
Vol. 107-No. 72 © Copyright 2000, Press-Republican

Plattsburgh, N.Y. 12901, Friday, April 28, 2000

50 cents 30 Pages

Ti drug raid nabs 13

\$20,000-a-week
crack-cocaine
ring is smashed



Henry H. Hommes
Sheriff

We would like to express our appreciation to Essex County Clerk Joseph Provoncha and his staff for the research that provided the historical listing of Essex County Sheriffs and Undersheriffs.

Also, without his invaluable help through the Stop DWI Program, our Patrol efforts would be considerably less than portrayed in this report.

Essex County Sheriff's

1799 to present

1799	<i>Thomas Stower</i>	1873	<i>Samuel S. Olcott</i>
1802	<i>Jonathan Lynde</i>	1876	<i>Judson C. Ware</i>
1806	<i>John Hoffnagle, Jr.</i>	1880	<i>Edward H. Talbot</i>
1808	<i>William Kirby</i>	1883	<i>Rollin L. Jenkins</i>
1812	<i>Delavan deLance</i>	1886	<i>Henry Allen</i>
1813	<i>George Throop</i>	1889	<i>O. A. Phinney</i>
1815	<i>Boughton Lobdell</i>	1892	<i>A. A. Boynton</i>
1819	<i>Luther Adgate</i>	1895	<i>John W. Nye</i>
1821	<i>William Kirby</i>	1898	<i>Joseph Wright</i>
1825	<i>Samuel Murdock</i>	1901	<i>Altus B. Adkins</i>
1828	<i>Leander J. Lockwood</i>	1904	<i>Sidney W. Barnard</i>
1831	<i>Samuel Murdock</i>	1907	<i>Wells F. Nye</i>
1831	<i>Solomon Everest</i>	1910	<i>J. D. Richards</i>
1837	<i>John Harris</i>	1913	<i>W. A. Knowlton</i>
1840	<i>Alanson Wilder</i>	1916	<i>Charles L. Pool</i>
1843	<i>Chilion A. Tremble</i>	1919	<i>Fred Dashnaw</i>
1846	<i>Norman Page</i>	1922	<i>James Wolfe</i>
1849	<i>Aaron B. March</i>	1925	<i>Charles W. Taylor</i>
1852	<i>Charles W. Ensign</i>	1928	<i>Robert S. McCoy</i>
1855	<i>Jacob Partmerter</i>	1934	<i>Hugh Moore</i>
1858	<i>Elisha A. Adams</i>	1937	<i>Percy T. Egglefield</i>
1861	<i>William W. Tabor</i>	1943	<i>John P. Crowley</i>
1864	<i>Ransom L. Locke</i>	1958	<i>Stanley Davies</i>
1867	<i>Abijah Perry</i>	1967	<i>K. E. Goodspeed</i>
1870	<i>Chauncey D. Bullis</i>	1980	<i>R. H. LaVigne</i>
		1998	<i>Henry H. Hommes</i>

Undersheriffs

Abijah Perry - 1862

William H. Orr - 1927

Milo Perry - 1868

Harold B. Rushby - Jan 5, 1931

Abijah Perry - 1874

Percy Egglefield - Apr. 9, 1931

Scott E. Phinney - 1889

Hugh J. Moore - 1937

A. Ladue - Jan. 8, 1895

Ferris R. Nichols - 1939

Bryon A. Perry - Feb. 26, 1895

Lee J. Phinney - 1942

Joseph Wright - 1901

Julius G. Burres - 1943

Warren W. Hale - 1904

Walter F. Smith - 1944

Charles L. Pool - 1910

George M. Young - 1951

Emmett W. Richards - 1911

Virgil S. Clark - 1954

Charles L. Pool - 1912

Frederick L. Smith - 1963

Fred L. Straight - 1916

Terrance E. Walton - 1969

Frank Shumway - 1923

Peter Zelinski - 1989

Joseph E. Denton - 1924

Henry Hommes - May 15, 1995

Joseph Dougan - 1925

Gary W. Wright - 1998

Albert W. Denton - 1926

Ticonderoga Sentinel.

THE LARGEST CIRCULATION IN ESSEX COUNTY

The We:
Fair and mild
change in temper

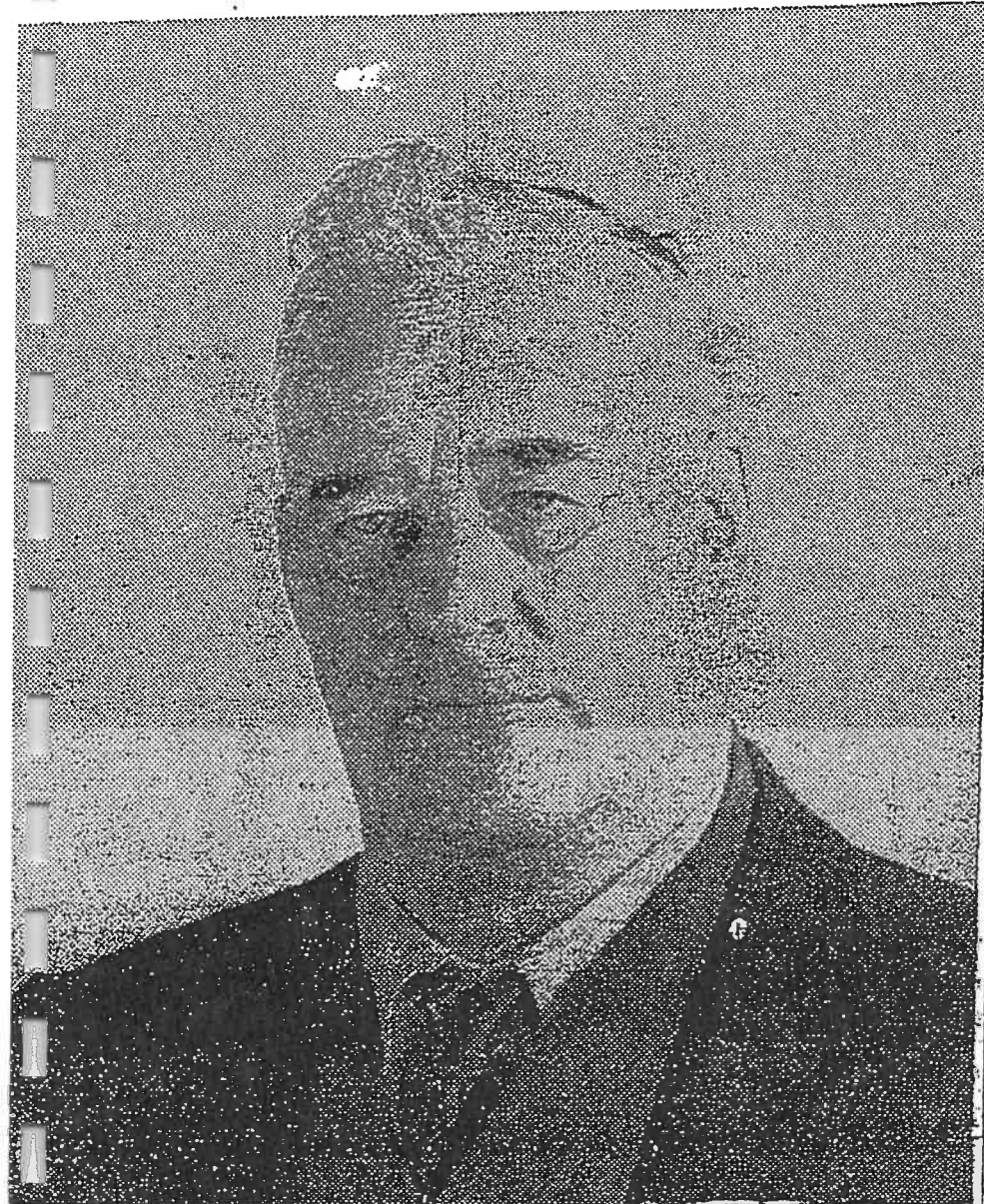
NUMBER 1

TICONDEROGA, NEW YORK, THURSDAY, NOVEMBER 18, 1948

PRICE TEN C

Jailer Slain At Elizabethtown, Both Fugitives Are Captured By Police At Keene Valley

VICTIM OF BRUTAL MURDER



Deputy Jailer Earl Torrence

Earl Torrence, 64,
Clubbed To Death
As Prisoners Make
Break for Freedom

SKULL CRUSHED

Arrest of Saranac
Man Today Ends
Intensive Search
By Cops, Wardens

BULLETIN!

ELIZABETH TOWN—
William Moody, fugitive
from the Essex County jail,
was captured by State Po-
lice at 10:30 this morning.
He offered no resistance,
according to Inspector R.
J. McDowell, who said
Moody was taken into cus-
tody near Keene Valley.

Almost 53 years ago, November 15, 1948 to be exact, Deputy Earl Torrance was alone on duty in the county jail - the same jail that our officers are working in to this day. At approximately 9:00pm, Deputy Torrance was in the jail, closing it down for the night - shutting off lights, closing windows, etc. Unknown to him, Edmund Hart charged with Burglary had picked the lock of the bullpen and armed with a 10" piece of steel bar he had kicked free, was secreted in a janitorial closet waiting for Deputy Torrance's return.

After Deputy Torrance returned to the cellblock, he checked on the inmates. Being aware of Deputy Torrance's routine, Hart had constructed and placed a dummy in his bunk. After locking down the cellblock, Deputy Torrance backed out of the door as was his custom. Hart stepped out of hiding and viciously struck Deputy Torrance in the back of the head at least 4 times with the steel bar. After Deputy Torrance fell, Hart removed the keys from the body and freed his co-conspirator, William Moody of Saranac Lake, a parole violator charged with Grand Larceny. Hart then hit Deputy Torrance "a couple of more times" and Moody joined in hitting the deputy twice more. The duo then gagged Deputy Torrance with a towel, forcing it into his mouth and tying it in place with a piece of clothesline.

After robbing Deputy Torrance, the two made their escape on foot in the direction of Keene. Both were captured within 3 days and received sentences of 50 years to life.

An effort to honor Deputy Torrance was begun by his family and between the family and our department, we were able to have Deputy Earl Torrance's name added to the National Police Memorial in Washington DC in May of 2000.

It has been more than 50 years, but the reality of just how dangerous our "local lockup" really is can be best demonstrated by this vile and fatal tragedy played out so many years ago.

JAIL

Jail bookings in 2000: The jail processed 423 males and 51 females for a total of 474 bodies incarcerated - an increase of 63 inmates, up over 15% from 1999.

Booking an inmate into the jail is a process that takes approximately 30-45 minutes to complete due to the nature of the paperwork, computer checks, entries, property inventories, physical checks & searches involved and cell assignments. During the year 2000, we averaged 1 booking per day and had a high of 12.

Among these bookings were:

1 Murder *	30 Sex Offenses
54 Assaults	1 Kidnapping
75 Burglary, Theft & Stolen Property	
2 Arson	23 Controlled Substances
3 Weapons	62 DWI
21 Unauthorized Use of Motor Vehicle and Auto theft	

Significant increases are present in the areas of Sex Offenses, Burglary & Theft and Controlled Substances charges.

- 2000 saw the closure of the legal proceedings in the Glanda Murder case. Both defendants were sentenced and were transported to New York State Department of Corrections, Glanda having spent 898 days and Pecararo 901 days in Essex County custody awaiting final disposition.
- We are also experiencing a new wrinkle in prosecutions in that inmate/inmate crime in the Federal Prison has been deemed a state crime and is prosecutable in Essex County Court. In 2000, we received and held for trial an inmate subsequently convicted of fatally stabbing another inmate in FCI Ray Brook. Not only did this inmate occupy unpaid bed space in the facility, but he also required additional overtime for security during the trial.

Boarding out

(Daily average for 2000 - 11 inmates) Boarding out of inmates remains a continued financial, transportation and overtime drain to our budget. 2000 we saw many times when we had more inmates in other counties than here in Essex - **a high of 28** in January. Our boarding days of inmates decreased by 32% over 1999 but while we did see a decrease, the numbers began to increase in the last quarter of the year. In January of 2001 our boarding out numbers are in the teens.

" Out" days (4,143 days) include:

Clinton County Jail	- 2,599 days
Franklin County Jail	1,432 days
Schenectady Co. Jail	45 days
Fulton County Jail	63 days
Warren County Jail	4 days

The housing of these overflow inmates cost Essex County over \$294,125 for the year 2000.

Female inmates

Female inmates were a large part of the " housing out". 2000 saw **51 female inmates for a total of 734 days** - up over 13% in numbers, but down 11% in bed days from 1999. At one time in December, we were holding 7 females as part of our jail count.

Intermittent Inmates

"Part time" inmates are a continual problem for jails with limited space. In order to allow a defendant to maintain gainful employment and still satisfy a court ordered sentence, Judges hand down a sentence ordering the defendant to serve specific days in jail and be out for the remainder of the week. While the days to be served can be anything, the most common is reporting to jail on Friday night and serving until Sunday night. These sentences can run up to one year in duration. ***Last year, we had an averaged 3 intermittent inmates every weekend with a high of 8.*** This means boarding out enough inmates on Friday to make room for these incoming inmates and then returning "our" inmates on Sunday - entailing transportation and overtime costs for both trips.

Mental Health

Account for a large increase in board outs. 2000 saw only 1 inmate in Mental Health facilities for a total of 28 days.

Medical care

Occasionally results in having an inmate being hospitalized while committed to the Sheriff's custody. This requires 24 hour guarding of the inmate requiring overtime to accomplish. During 2000 we had **19 days** of hospitalized inmates. These inmates include one with acute appendicitis and one with a brain aneurysm requiring expensive hospital stays.

Inmate Transports

Court Transports

Another area of increased travel is in Court appearances. The budget crisis has hit all agencies and one area that has been cut is in the transportation of inmates. Arresting agencies no longer do us the courtesy of transporting their arrestees to court appearances. By law, once a judge drops his gavel committing an inmate to the custody of the Sheriff, he/she is our responsibility (including transport to any and all court appearances). Due to the varied court schedules around the county and the fluctuating number of inmates for each court, scheduling for these transports is rarely successful, necessitating a high number of overtime hours.

In 2000, Court, Board and medical transports resulted in the following:

- 343 transports - almost 40,000 miles;
- 190 for housing - 26,877 miles;
- 128 for court appearances - 9,352 miles;
- 25 for other required such as medical, etc, over 2,100 miles;
- 603 inmates transported;
- 3,307 hours of staff time;

Juvenile Transports

Juvenile transports (under 16 years of age) are always a budgetary drain. We have been tasked with 6 **juvenile** transports requiring **100.5 person hours** of time. These can be as simple as a trip to Willsboro, or can result in traveling to Buffalo or New York City for housing then having to return the individual the next day for court action. The **cost to Essex County was \$2,178.45** in payroll (not taking into account transportation costs) but **reimbursement only amounts to \$872.86.**

"State Inmates"

State overcrowding is also reflected in our figures as we housed 8 Parole Violators for a period of 679 days waiting for the return process to be completed and the offender to be returned to the State System. This is an average of 85 days per inmate and is up 28% over last year. When the jail is full, these extra state inmates cause us to board out. 679 bed days boarded out cost us \$47,530.00 and in return, state reimbursement allows \$23,086.00 for housing these inmates. This is a net loss to Essex County of \$24,444.00.

State Ready

We also have a problem with the holding of inmates between sentencing to a State facility and the actual transport into State custody. The Department of Corrections is under Court order to take these inmates within 10 days, but due to overcrowding, this deadline is seldom met. When this happens, we receive \$34.00 per day for their housing in excess of the statutory 10-day period. Last year, we held 13 over the statutory 10-day limit for a total of 217 days alone.

In 2000, we held 21 State Ready inmates for a total of 385 days. This is an average of 18 days per inmate. In the same scenario as Parole Violators, these beds cost us \$26,950.00 in board out costs while reimbursement was \$13,090.00 leaving a deficit of \$13,860.00.

Convicted Felons Sentenced to the County Jail

Another area of "State" inmates in the county jail is inmates convicted of and sentenced for a felony, but sentenced to a term of 1 year or less. This results in the inmates doing their time in the county jail without state reimbursement. In 2000, we had 48 of these inmates for a total of 2,466 days of housing after their sentences. These days, if boarded out would cost \$172,620.00. This is a total loss to the county as the previous \$17.00 per day reimbursement was eliminated last year. Should this reimbursement have still been in place, the total claimed would be \$41,922.00.

To recap "state" responsible inmates:

3,530 inmate days (if board out is necessary)	\$247,100.00
(Up over 11%)	
State reimbursement billable	36,176.00
Net Loss to Essex County -----	\$210,924.00

Jail Incidents & Discipline

Operating any detention facility is a risky job to the employees. Essex County Jail expects the inmates committed to the jail to live by certain rules and regulations for the safety, security and good order of the facility. In addition to staff members being exposed to every degree of disease from the common cold to Tuberculosis (a number of staff have tested positive for exposure) to HIV/AIDS, we also deal with behavioral problems.

As we are not dealing with the best-behaved members of society, we can expect behavior problems in our clientele. Any time a number of people are confined in conditions of heat, cold, drafts, deteriorating conditions, tempers get out of hand as well as behavioral issues coming to light.

Behavioral issues are handled in a number of ways ranging from minor verbal reprimands up the ladder to additional criminal charges. As to behavior in the facility, officers use management techniques ranging from removal of minor privileges such as television or locking down an inmate for the day up to charging the inmate with a violation of the jail rules and scheduling a hearing on the alleged offense.

Inmates are allowed to commingle in dayroom areas of the cellblocks during the majority of the day. Guilty determinations from Disciplinary Hearings can result in the loss of this privilege for up to 180 days per offense as well as loss of Good Behavior allowances in the case of sentenced inmates. These Good Behavior allowances can shorten a sentence by up to 1/3 of the court ordered time for behaved inmates.

Last year, we had 16 offenses serious enough for formal written Disciplinary charges as well as innumerable minor offenses handled by the officers.

The more serious offenses include:

- 4 controlled substance violations;
- 4 loud, disorderly conduct charges;
- 7 fighting incidents, and;
- 1 for weapon possession in the facility.

We also had 5 incidents serious enough for mandated reporting to the New York State Commission of Correction. These were:

- 2 for controlled substance violations;
- 1 for a fight serious enough for medical attention;
- 1 for attempting to introduce marijuana into the jail via the US mail, and;
- 1 for an aborted escape attempt by a convicted felon sentence to 50 years.

The escape referred to above concerns an ex-state inmate facing new charges of attempted murder and sex offenses. After trial, a jury finding of guilt and a definite sentence of 50 years, the inmate took the opportunity to make an escape attempt. During state mandated outdoor recreation, the inmate made a sudden break for the fence. He was able to scale the fence seconds before officers could reach him. He then forced his body between the top of the chain link fence and the barbed/concertina security wire (leaving a considerable amount of clothing on the fence and acquiring numerous cuts and abrasions) and dropped into the parking lot behind the jail. Due to the fast action of the Sergeant and officers on duty, the inmate was not able to get more than a few yards from the fence before being recaptured. He was subsequently charged with escape and had 3 1/2 to 7 years added onto the end of his sentence.

VINE

(Victim Identification and Notification Everyday)

The New York State Sheriff's Association, through a grant, was able to institute the VINE program at the Essex County Jail. Under this program, victims can be notified upon the release of an offender from custody. This allows the victim early notice and gives the opportunity to protect themselves from repeat offenses or retaliation from the offender.

The program allows anyone (not just a victim) to call a toll free number and first, determine if an offender is in a county jail, NYC lockup or state prison in New York State. If so, the caller can then follow up by registering their telephone number with the offender's computer file and upon the offender's release, the computer will contact the offender notifying them of the release. This is a completely anonymous computerized service and is free to the user.

While this system is designed for the victim, anyone with an interest can utilize the system - the District Attorney, police agencies, press, defense attorneys, courts, virtually anyone with the name of an offender and the interest in knowing the release date.

By virtue of this grant, we were able to provide posters, pamphlets, instructional video tapes and tear pads to all police agencies in Essex County as well as agencies such as End Domestic Violence, Probation, Mental Health, Hospitals, all courts, etc.

During 2000 this system made 18 calls to victims/interested parties notifying them of the release of an offender.

DNA Indexing

New York State has implemented a system whereby certain felony offenders are required to provide a blood sample for DNA indexing. This is to build a database of convicted offenders for future reference where DNA trace evidence is left at a crime scene.

Through this program, Essex County Jail has identified 5 target convicted offenders in our jail and have harvested and forwarded the necessary blood to the state for inclusion in the register.

Facility Nurse

In order to better provide medical care for our inmates, to assist Dr. Herbert Savel and to comply with state requirements, we hired Mary Murphy as the Essex County Jail Nurse last year.

Already, Ms. Murphy has made an impact on services in the jail. Her duties include, but are not limited to:

- testing all inmates for TB;
- medical screening of all incoming inmates;
- supervision of inmate medications;
- oversight of regular "sick call";
- supervision of special medical needs inmates such as diabetics, cardiac patients, post surgical, etc.;
- training of staff in medical areas;
- annual testing of staff for TB;
- inoculation of staff for flu, hepatitis, etc prevention, and;
- work closely with Dr. Savel to insure adequate medical services are provided to the inmate population, thereby reducing liability of the facility.

PATROL

During 2000, this department received **51 Arrest Warrants** for execution. These warrants were for individuals anywhere in the state or country. As of January 2001, 42 of these warrants were closed through arrests, vacated by the courts or otherwise withdrawn. The 9 outstanding warrants are still in process of locating the defendant/respondents or when located have been filed with other agencies awaiting the defendant to be available for arrest. Some are out of the state or country, others have moved and the whereabouts are unknown, still others are located in other counties in New York State and we are at the mercy of their Warrant Squads to make the arrest and turn them over to us.

Our patrols accomplished **82 arrests** during 2000. These were Family Court Warrants as well as criminal offenses ranging from felonies down to violations. Our patrols also issued **537 Uniform Traffic Tickets**.

These patrols also investigated numerous motor vehicle accidents. Of these, 11 were serious enough, either in physical injury or property damage to necessitate formal written investigations.

As a police agency, this department also logs incidents. An incident is a term given to any type of complaint, response or action. Our incidents ranged from citizen assists, to stranded motorists, lockouts from cars and houses, prowler complaints, missing children, suspicious vehicles, loud parties, animal complaints, alarms, etc. Also, in these incidents are assists to other agencies such as Police, Ambulance squads and assisting in the search for escapees such as the one from New York State Department of Corrections Shock Camp Moriah and Federal Correctional Institute Ray Brook in

past years. The remainders of the incidents range from domestic disputes and family offenses to alcohol complaints, DWI, traffic complaints, Burglary, dangerous drugs, vehicular accidents, etc.

Also included in our duties are security for special events and visits by dignitaries. Some noteworthy events during 2000 were:

- Goodwill Games, February 16-20, Lake Placid;
- ESPN Great Outdoor Games, July 20-23, Lake Placid;
- ISUZU Ironman Triathlon July 30, Lake Placid;
- President Clinton's visit August 18-20, Lake Placid;
- Adirondack Marathon, September 24, Schroon Lake;
- Buckle Up New York Road & Safety Checks as funded by grant dollars:
 - May 20-29;
 - September 8-17;
 - November 17-26.

School Resource Officer Program

Upon receiving a COPS grant to place four Deputies in schools under the School Resource Officer program, Essex County contacted Putnam County Sheriff Robert Thoubboron to enlist his help to train our officers. He readily agreed by sending Sgt. McCray to Plattsburgh where he not only trained the Essex County contingent but several officers from local Police Departments. Upon completion of that schooling, he allowed the Essex County officers to shadow his officers at the schools in Putnam County.

Upon assignment to their respective Essex County schools, many interesting and unusual arrests were made. In one case, an irate mother was arrested for making a bomb threat at one of the schools when she told a student to pull the fire alarm because she was going to blow the place up. In another school, a mother was arrested for placing beer outside the school door for her son while he was at a school dance. In yet another incident, two students were arrested for burglary after information was circulated around school that these two were selling cigarettes at a discounted price. It was learned that a neighbor of one of the students operated a small general store and had recently died. While his wife was making the funeral arrangements, the students broke into the store and stole the cigarettes. Another notable case involved a 17-year-old selling a bag of marijuana to a 6th grader who had just turned 12, 6 days earlier.

These dedicated officers perform a multitude of services while in the schools. They are counselors, law enforcement resource sources, a police presence, educators in law enforcement areas and in many cases a "non-interested" third party for students to sound off to and discuss problems they can't take elsewhere. They teach safety issues dealing with the law, firearms and even make time to attend sporting events, after school activities and graduations.

D.A.R.E.

Essex County trained its first D.A.R.E. officer in January 1998, supplemented this training with High School level certification in February 1999 and Junior High School in June 2000.

Deputy Jerry Martin has given presentations to numerous civic organizations including the American Legion, American Legion Auxiliary, Lions, Essex County School Boards as well as visiting all of the Essex County elementary schools and promoting the program for future implementation into their curriculum.

As a result, this program was taught to Kindergarten through 12th grades in 9 Essex County schools with 585 students in 1999/2000 receiving the program and 581 in 28 classes in the 2000/2000 school year in progress.

Even though we expanded the program grade levels, the reason we are not reaching significantly larger numbers of students overall was due to Moriah Central School and St. Agnes Parochial School in Lake Placid electing not to participate in the program this year.

This program is funded through donated materials and monies for supplies. Each student receives workbooks, a t-shirt at graduation and at various times in the curriculum, incentives such as pencils, certificates, stickers, etc. These items are all funded through public support.

NARCOTICS ENFORCEMENT

The Essex County Sheriff's Department Narcotics Unit was involved in many cases during the year 2000. The most notable being **Operation Ti Down** which began in 1999 and was brought to a successful conclusion in 2000. This case resulted in the **arrest of 20 persons**. Ten of these were charged with Sale of Crack Cocaine under State Law. four were charged with Sale of Crack Cocaine and other charges under Federal Law. The remaining people were charged with Sale of Marijuana. The sales and arrest covered 5 Essex County Towns and New York City. **Several ounces of cocaine and marijuana with a street value of over \$25,000 were seized during the arrest as well as \$15,000 in cash and two handguns. During the course of this investigation eight different agencies were called upon to assist.**

Other notables:

A 17-year-old arrested in school for Sale of Marijuana to a 12-year-old. He had just turned 12, 6 days earlier.

A harvest of over **1,000 marijuana plants** from throughout the county thus depriving the dealers from putting that much more onto the streets.

As a member of a Federal, State, County and Local Task Force, the Essex County Narcotics Officer has been involved in numerous arrest and seizures. All told, **over two pounds of Crack Cocaine and other drugs have been seized with a value of over \$100,000.**

A grant was received from Senator Stafford in the amount of \$10,000 with which we were able to purchase equipment that will enable the unit to utilize the most up-to-date equipment for future operations.

At the close of 2000, the unit had opened 38 new cases, many of which continue into 2001.

NYSPIN

Another tool that the Sheriff's Department utilizes in both the field of Corrections and Law Enforcement is the New York State Police Information Network computer terminal. This is a computer interface with the New York State, other states as well as Federal agencies in the criminal justice field. Through this computer system we can obtain information on drivers' licenses, registrations, weather statements, road closings, criminal warrant checks, criminal histories and send instantaneous teletype messages to other agencies throughout the country. We can also enter information on warrants on subjects wanted in Essex County. If this individual is stopped and any information is checked through the system, such as a driver's license check, the warrant information will immediately print out resulting in the arrest and return of the wanted individual.

Every inmate booked into the jail is run through the system for criminal history and warrant checks. In this way we can have information on the individual's history and criminal status. We are then better informed and prepared to deal with this inmate knowing his/her history.

In cooperation with other county agencies in the criminal justice field we also run criminal history information for their official usage. In 2000, this office ran thousands of criminal history checks.

In November 1999, the new "QICS" system became active. Under this system, any gun purchaser must undergo a background check prior to obtaining the weapon. This computer check covers all aspects from involuntary commitment to mental institutions, military discharge history, criminal history, domestic violence, citizenship and deportation status, etc.

DISPATCH

Essex County Sheriff's Department is also responsible for dispatching of Emergency Equipment in the county. In 2000, this office received 1,790 citizen calls for emergency services. These calls can range from a single ambulance dispatch to a multiple fire department mutual aid. Time involved can be as little as 20 minutes for a very simple call to tying up 2 or 3 men for an entire shift for a major incident such as flooding, forest fire, major structure fire, etc.

These 1,790 calls represent over two thirds of the squads in the county, but only 43.6% of the population as the larger towns are handled through their own or neighboring county emergency centers. When 9-1-1 becomes a reality, the numbers above will then increase accordingly as well as this agency becoming the point of contact for all police calls within the county.

CIVIL

By law, the Sheriff is the designated official in the County to affect the service of civil process, execute court mandated orders such as evictions, seize property ranging from vehicles to bank accounts, cash register contents, land and property, etc and conduct sales to raise funds necessary to satisfy court ordered judgments.

Any civil, Family Court, Grand Jury or trial action requires notification of the people involved. This notification comes in the form of a civil summons, subpoena, summons and petition, etc. These are the documents that the Sheriff is charged with serving. As you can imagine, people in serious legal difficulties are not easily found. We find that the services contain the address at the time of the incident and the people have moved numerous times since. This requires a large amount of time and resources to locate and serve the documents or take the mandated action necessary to satisfy the court order.

Unfortunately, when the economy slumps, our business soars as credit and monies are not available and people are forced to default on their obligations.

Monies collected in this office were \$467,142.84 (up 12.5%) in 2000. The majority of these monies (\$175,279.86) were in the area of execution collections for bad debts. These are monies collected on income garnishees, levies on tangible property such as bank accounts, sales of motor vehicles seized, etc. that are then passed on to the creditors in the action. 2000 saw revenue for Essex County in the amount of \$27,793.55 for Civil Process.

Last year, we also served 1,319 summons and related documents initiating new civil actions, requiring attendance in court, etc. In addition to these, we also opened 345 new collection files on bad debts. These are income executions as well as property executions requiring seizing of assets to satisfy a debt. This office also processes bail and fines paid on behalf of inmates in the county jail. In 2000, we processed \$247,070.00 in bail and \$11,641.94 in fines and forwarded it on to the appropriate jurisdictions.

COURT SECURITY

The Sheriff's Department is also charged with the security of the County, Supreme, Family and Surrogate's Courts held in and for the County of Essex. Currently we have 3 full time officers in addition to part-time attendants and supplement their services with overtime as the court schedule demands.

In 2000, the court load required not only the regular staffing, but also hours of additional overtime in order to satisfactorily fulfill our contract with the Unified Court System. This does not include the officers assigned to physically transport or supervise the inmate during his/her court time. Should an inmate be involved in a trial, we are mandated to provide a full time officer to stay with the inmate from the time he/she leaves the jail until such time as the court adjourns for the day. This time is not included in the court reimbursable allowances and has to be resolved through overtime.

As a part of the contract, we are reimbursed for services rendered. This reimbursement for 2000 totaled \$179,498.13.

2000 saw Essex County Court System handle 489 Supreme and County Court Cases with 19 jury trials as well as thousands of Family Court and Support Enforcement cases and appearances.

The Essex County Court Building houses the Supreme, County, Surrogates' and Family Courtrooms and offices, the Essex County Clerk's Office, Department of Motor Vehicles, District Attorney's Office and Essex County Law Library. In 2000, excluding employees and Officers of the Courts, these offices had a total of over 132,000 visitors pass through the security desk in the lobby of the building.

Appendix A

Essex County Jail Annual Report to New York State Commission of Correction

Detail Inmate Summary for 2000

I.	* BEGINNING OF PERIOD	MALE	FEMALE	TOTAL
	COUNTY CENSUS	37	1	38
	HOUSED IN +	2	0	2
	TOTAL CENSUS =	39	1	40
	HOUSED OUT -	14	1	15
	OUT COUNT -	3	0	3
	PHY COUNT =	22	0	22

II. * COUNTY ADMISSIONS

A	* SENT INITIAL ENTRY	MALE	FEMALE	TOTAL
	FELONY	29	6	35
	MISDEMEANOR	60	8	68
	VIOLATION	6	1	7
	INFRACT & OTH	15	1	16
	SUBTOTAL	110	16	126

B	* SENT STATUS CHANGE	MALE	FEMALE	TOTAL
	FELONY	8	0	8
	MISDEMEANOR	17	0	17
	VIOLATION	0	0	0
	INFRACT & OTH	1	0	1
	SUBTOTAL	26	0	26

C	* TOTAL SENTENCED	136	16	152
---	-------------------	-----	----	-----

D	* UNSENTENCED ON ENTRY	MALE	FEMALE	TOTAL
	FELONY	129	16	145
	MISDEMEANOR	137	14	151
	VIOLATION	15	4	19
	INFRACT & OTH	26	1	27
	SUBTOTAL	307	35	342

E	* TOTAL CO ADMISSIONS	417	51	468
---	-----------------------	-----	----	-----

III.	* HOUSED FOR OTHER	MALE	FEMALE	TOTAL
	COUNTY SJO	0	0	0
	STATE INMATES	6	0	6
	FEDERAL	0	0	0
	OTHER	0	0	0
	SUBTOTALS	6	0	6

IV.	* TOTAL ADMISSIONS	423	51	474
-----	--------------------	-----	----	-----

V. * DISCHARGE REASONS

A * COUNTY DISCHARGES	MALE	FEMALE	TOTAL
EXP OF SENT	108	9	117
BY COURT PLUS	278	37	315
BY COURT	125	18	143
BAILED	136	18	154
PAID FINE	17	1	18
TRAN CO PEN	0	0	0
STATE HOS	0	0	0
TRANS TO DOCS	18	0	18
OTHER PLUS DTH	19	1	20
DEATH	0	0	0
OTHER	19	1	20
SUBTOTALS	423	47	470
B * NONCOUNTY DISCHARGES	MALE	FEMALE	TOTAL
BOARDERS SJO	0	0	0
PAROLE RETURN	3	0	3
PAROLE RELEASE	3	0	3
FEDERAL	0	0	0
OTHER PLUS COR	0	0	0
CORAM NOBIS	0	0	0
OTHER	0	0	0
SUBTOTALS	6	0	6
C TOTALS	429	47	476

VI. * INMATES HOUSED OUT

A * HOUSED OUT TO	MALE	FEMALE	TOTAL
OTH COUNTIES SJO	166	58	224
MENTAL FAC	1	0	1
HOSPITAL	4	0	4
OTHER	0	0	0
TOTALS	171	58	229
B * RETURNED FROM	MALE	FEMALE	TOTAL
OTH COUNTIES SJO	168	56	224
MENTAL FAC	1	0	1
HOSPITAL	4	0	4
OTHER	0	0	0
TOTALS	173	56	229

VII. * END OF PERIOD COUNT	MALE	FEMALE	TOTAL
COUNTY CENSUS	31	5	36
HOUSED IN +	2	0	2
TOTAL CENSUS =	33	5	38
HOUSED OUT -	12	3	15
OUT COUNT -	4	1	5
PHY COUNT =	17	1	18

SUMMARY

* PRESENTENCE CHARGES *

		MALE				FEMALE				TOTAL
		OTH	MIS	FEL	TOTAL	OTH	MIS	FEL	TOTAL	
MURDER	ART 125	0	0	1	1	0	0	0	0	1
SEX OFF	ART 130	0	4	17	21	0	0	0	0	21
ROBBERY	ART 160	0	0	4	4	0	0	0	0	4
ASSAULT	ART 120	0	20	19	39	0	0	0	0	39
BURGLARY	ART 140	3	6	18	27	0	0	3	3	30
LARCENY	ART 155	0	5	0	5	0	1	0	1	6
MOTOR THEFT	1553	0	0	9	9	0	0	0	0	9
ARSON	ART 150	0	0	2	2	0	0	0	0	2
KIDNAPP	ART 135	0	0	1	1	0	0	0	0	1
CONT SUB	ART 220	0	2	12	14	0	0	5	5	19
DANG WEAPONS	265	0	0	2	2	0	0	0	0	2
PROSTITUTION	230	0	0	0	0	0	0	0	0	0
STOLEN PROP	165	0	1	7	8	0	2	0	2	10
D.W.I.	ART 1192	0	20	15	35	0	1	2	3	38
UNAU USE VEHICLE		0	2	0	2	0	2	0	2	4
DISORDERLY	240	8	11	0	19	1	0	0	1	20
ALL OTHER		30	66	22	118	4	8	6	18	136
TOTALS		41	137	129	307	5	14	16	35	342

SUMMARY

* SENTENCE CHARGES *

		MALE				FEMALE				TOTAL
		OTH	MIS	FEL	TOTAL	OTH	MIS	FEL	TOTAL	
MURDER	ART 125	0	0	0	0	0	0	0	0	0
SEX OFF	ART 130	0	3	6	9	0	0	0	0	9
ROBBERY	ART 160	0	0	0	0	0	0	0	0	0
ASSAULT	ART 120	0	10	3	13	0	2	0	2	15
BURGLARY	ART 140	1	4	1	6	0	0	0	0	6
LARCENY	ART 155	0	14	0	14	0	2	0	2	16
MOTOR THEFT	1553	0	0	3	3	0	0	2	2	5
ARSON	ART 150	0	0	0	0	0	0	0	0	0
KIDNAPP	ART 135	0	0	1	1	0	0	0	0	1
CONT SUB	ART 220	0	1	1	2	0	0	2	2	4
DANG WEAPONS	265	0	0	1	1	0	0	0	0	1
PROSTITUTION	230	0	0	0	0	0	0	0	0	0
STOLEN PROP	165	0	2	0	2	0	1	0	1	3
D.W.I.	ART 1192	2	3	16	21	0	2	1	3	24
UNAU USE VEHICLE		0	3	0	3	0	0	0	0	3
DISORDERLY	240	4	5	0	9	0	0	0	0	9
ALL OTHER		15	32	5	52	2	1	1	4	56
TOTALS		22	77	37	136	2	8	6	16	152

TABLE 1A

* SENTENCED MALE CHARGES *

FELONIES

	A1	A11	B	C	D	E	TOTAL
MURDER ART 125	0	0	0	0	0	0	0
SEX OFF ART 130	0	0	0	0	3	3	6
ROBBERY ART 160	0	0	0	0	0	0	0
ASSAULT ART 120	0	0	0	0	3	0	3
BURGLARY ART 140	0	0	0	0	1	0	1
LARCENY ART 155	0	0	0	0	0	0	0
MOTOR THEFT 1553	0	0	0	0	1	2	3
ARSON ART 150	0	0	0	0	0	0	0
KIDNAPP ART 135	0	0	0	0	1	0	1
CONT SUB ART 220	0	0	0	0	1	0	1
DANG WEAPONS 265	0	0	0	0	1	0	1
PROSTITUTION 230	0	0	0	0	0	0	0
STOLEN PROP 165	0	0	0	0	0	0	0
D.W.I. ART 1192	0	0	0	0	1	15	16
UNAU USE VEHICLE	0	0	0	0	0	0	0
DISORDERLY 240	0	0	0	0	0	0	0
ALL OTHER	0	0	0	0	3	2	5
TOTALS	0	0	0	0	15	22	37

MISDEMEANORS

OTHER

GRAND

	A	B	U	TOTAL	V	I	YO	CIV	TOTAL
MURDER ART 125	0	0	0	0	0	0	0	0	0
SEX OFF ART 130	2	1	0	3	0	0	0	0	9
ROBBERY ART 160	0	0	0	0	0	0	0	0	0
ASSAULT ART 120	10	0	0	10	0	0	0	0	13
BURGLARY ART 140	2	2	0	4	1	0	0	0	6
LARCENY ART 155	14	0	0	14	0	0	0	0	14
MOTOR THEFT 1553	0	0	0	0	0	0	0	0	3
ARSON ART 150	0	0	0	0	0	0	0	0	0
KIDNAPP ART 135	0	0	0	0	0	0	0	0	1
CONT SUB ART 220	1	0	0	1	0	0	0	0	2
DANG WEAPONS 265	0	0	0	0	0	0	0	0	1
PROSTITUTION 230	0	0	0	0	0	0	0	0	0
STOLEN PROP 165	2	0	0	2	0	0	0	0	2
D.W.I. ART 1192	0	0	3	3	0	2	0	0	21
UNAU USE VEHICLE	3	0	0	3	0	0	0	0	3
DISORDERLY 240	4	1	0	5	4	0	0	0	9
ALL OTHER	17	2	13	32	1	13	1	0	52
TOTALS	55	6	16	77	6	15	1	0	136

TABLE 1B

* UNSENTENCED MALE CHARGES *

			FELONIES						
			A1	A11	B	C	D	E	TOTAL
MURDER	ART	125	1	0	0	0	0	0	1
SEX OFF	ART	130	0	0	5	0	10	2	17
ROBBERY	ART	160	0	0	1	2	1	0	4
ASSAULT	ART	120	0	0	1	0	17	1	19
BURGLARY	ART	140	0	0	2	11	5	0	18
LARCENY	ART	155	0	0	0	0	0	0	0
MOTOR THEFT		1553	0	0	0	0	4	5	9
ARSON	ART	150	0	0	0	2	0	0	2
KIDNAPP	ART	135	0	0	0	0	0	1	1
CONT SUB	ART	220	0	0	6	3	3	0	12
DANG WEAPONS		265	0	0	0	0	2	0	2
PROSTITUTION		230	0	0	0	0	0	0	0
STOLEN PROP		165	0	0	0	0	5	2	7
D.W.I.	ART	1192	0	0	0	0	2	13	15
UNAU USE VEHICLE			0	0	0	0	0	0	0
DISORDERLY		240	0	0	0	0	0	0	0
ALL OTHER			0	0	0	0	5	17	22
TOTALS			1	0	15	18	54	41	129

		MISDEMEANORS				OTHER				GRAND
		A	B	U	TOTAL	V	I	VP	CIV	TOTAL
MURDER	ART 125	0	0	0	0	0	0	0	0	1
SEX OFF	ART 130	2	2	0	4	0	0	0	0	21
ROBBERY	ART 160	0	0	0	0	0	0	0	0	4
ASSAULT	ART 120	19	1	0	20	0	0	0	0	39
BURGLARY	ART 140	2	4	0	6	3	0	0	0	27
LARCENY	ART 155	5	0	0	5	0	0	0	0	5
MOTOR THEFT	1553	0	0	0	0	0	0	0	0	9
ARSON	ART 150	0	0	0	0	0	0	0	0	2
KIDNAPP	ART 135	0	0	0	0	0	0	0	0	1
CONT SUB	ART 220	2	0	0	2	0	0	0	0	14
DANG WEAPONS	265	0	0	0	0	0	0	0	0	2
PROSTITUTION	230	0	0	0	0	0	0	0	0	0
STOLEN PROP	165	1	0	0	1	0	0	0	0	8
D.W.I.	ART 1192	0	0	20	20	0	0	0	0	35
UNAU USE VEHICLE		2	0	0	2	0	0	0	0	2
DISORDERLY	240	10	1	0	11	8	0	0	0	19
ALL OTHER		45	2	19	66	4	15	11	0	118
TOTALS		88	10	39	137	15	15	11	0	307

JMS 03.13
01/01/00 THUR 12/31/00

ESSEX JAIL
SCOC'S ANNUAL REPORT

PAGE 6
01/03/01

TABLE 2A

* SENTENCED FEMALE CHARGES *

FELONIES

	A1	A11	B	C	D	E	TOTAL
MURDER ART 125	0	0	0	0	0	0	0
SEX OFF ART 130	0	0	0	0	0	0	0
ROBBERY ART 160	0	0	0	0	0	0	0
ASSAULT ART 120	0	0	0	0	0	0	0
BURGLARY ART 140	0	0	0	0	0	0	0
LARCENY ART 155	0	0	0	0	0	0	0
MOTOR THEFT 1553	0	0	0	0	0	2	2
ARSON ART 150	0	0	0	0	0	0	0
KIDNAPP ART 135	0	0	0	0	0	0	0
CONT SUB ART 220	0	0	0	0	2	0	2
DANG WEAPONS 265	0	0	0	0	0	0	0
PROSTITUTION 230	0	0	0	0	0	0	0
STOLEN PROP 165	0	0	0	0	0	0	0
D.W.I. ART 1192	0	0	0	0	0	1	1
UNAU USE VEHICLE	0	0	0	0	0	0	0
DISORDERLY 240	0	0	0	0	0	0	0
ALL OTHER	0	0	0	0	0	1	1
TOTALS	0	0	0	0	2	4	6

MISDEMEANORS

OTHER

GRAND

	A	B	U	TOTAL	V	I	YO	CIV	TOTAL
MURDER ART 125	0	0	0	0	0	0	0	0	0
SEX OFF ART 130	0	0	0	0	0	0	0	0	0
ROBBERY ART 160	0	0	0	0	0	0	0	0	0
ASSAULT ART 120	2	0	0	2	0	0	0	0	2
BURGLARY ART 140	0	0	0	0	0	0	0	0	0
LARCENY ART 155	2	0	0	2	0	0	0	0	2
MOTOR THEFT 1553	0	0	0	0	0	0	0	0	2
ARSON ART 150	0	0	0	0	0	0	0	0	0
KIDNAPP ART 135	0	0	0	0	0	0	0	0	0
CONT SUB ART 220	0	0	0	0	0	0	0	0	2
DANG WEAPONS 265	0	0	0	0	0	0	0	0	0
PROSTITUTION 230	0	0	0	0	0	0	0	0	0
STOLEN PROP 165	1	0	0	1	0	0	0	0	1
D.W.I. ART 1192	0	0	2	2	0	0	0	0	3
UNAU USE VEHICLE	0	0	0	0	0	0	0	0	0
DISORDERLY 240	0	0	0	0	0	0	0	0	0
ALL OTHER	0	0	1	1	1	1	0	0	4
TOTALS	5	0	3	8	1	1	0	0	16

TABLE 2B

* UNSENTENCED FEMALE CHARGES *

FELONIES

	A1	A11	B	C	D	E	TOTAL
MURDER ART 125	0	0	0	0	0	0	0
SEX OFF ART 130	0	0	0	0	0	0	0
ROBBERY ART 160	0	0	0	0	0	0	0
ASSAULT ART 120	0	0	0	0	0	0	0
BURGLARY ART 140	0	0	0	0	3	0	3
LARCENY ART 155	0	0	0	0	0	0	0
MOTOR THEFT 1553	0	0	0	0	0	0	0
ARSON ART 150	0	0	0	0	0	0	0
KIDNAPP ART 135	0	0	0	0	0	0	0
CONT SUB ART 220	0	0	3	2	0	0	5
DANG WEAPONS 265	0	0	0	0	0	0	0
PROSTITUTION 230	0	0	0	0	0	0	0
STOLEN PROP 165	0	0	0	0	0	0	0
D.W.I. ART 1192	0	0	0	0	0	2	2
UNAU USE VEHICLE	0	0	0	0	0	0	0
DISORDERLY 240	0	0	0	0	0	0	0
ALL OTHER	0	0	0	0	1	5	6
TOTALS	0	0	3	2	4	7	16

MISDEMEANORS

OTHER

GRAND

	A	B	U	TOTAL	V	I	VP	CIV	TOTAL
MURDER ART 125	0	0	0	0	0	0	0	0	0
SEX OFF ART 130	0	0	0	0	0	0	0	0	0
ROBBERY ART 160	0	0	0	0	0	0	0	0	0
ASSAULT ART 120	0	0	0	0	0	0	0	0	0
BURGLARY ART 140	0	0	0	0	0	0	0	0	3
LARCENY ART 155	1	0	0	1	0	0	0	0	1
MOTOR THEFT 1553	0	0	0	0	0	0	0	0	0
ARSON ART 150	0	0	0	0	0	0	0	0	0
KIDNAPP ART 135	0	0	0	0	0	0	0	0	0
CONT SUB ART 220	0	0	0	0	0	0	0	0	5
DANG WEAPONS 265	0	0	0	0	0	0	0	0	0
PROSTITUTION 230	0	0	0	0	0	0	0	0	0
STOLEN PROP 165	2	0	0	2	0	0	0	0	2
D.W.I. ART 1192	0	0	1	1	0	0	0	0	3
UNAU USE VEHICLE	2	0	0	2	0	0	0	0	2
DISORDERLY 240	0	0	0	0	1	0	0	0	1
ALL OTHER	5	1	2	8	3	1	0	0	18
TOTALS	10	1	3	14	4	1	0	0	35

JMS 03.13

01/01/00 THUR 12/31/00

ESSEX JAIL
SCOC'S ANNUAL REPORTPAGE 8
01/03/01TABLES 3 & 4
DAYSLENGTH OF SENTENCE
MALE FEMALE TOTALLENGTH OF STAY
MALE FEMALE TOTAL

1/ 4	0	0	0	56	9	65
1/ 2	0	0	0	26	4	30
3/ 4	0	0	0	33	7	40
1- 3	2	0	2	50	4	54
4- 6	3	0	3	60	4	64
7- 9	8	0	8	39	5	44
10- 12	2	1	3	18	2	20
13- 15	8	1	9	15	0	15
16- 18	1	0	1	9	3	12
19- 21	5	0	5	10	1	11
22- 24	2	2	4	6	1	7
25- 27	1	0	1	1	0	1
28- 30	22	0	22	13	0	13
31- 33	0	0	0	3	0	3
34- 36	0	0	0	2	1	3
37- 39	1	0	1	7	1	8
40- 42	1	1	2	5	0	5
43- 45	9	1	10	2	0	2
46- 48	2	0	2	4	0	4
49- 51	2	0	2	6	0	6
52- 54	0	0	0	0	0	0
55- 57	0	0	0	1	0	1
58- 60	10	2	12	2	2	4
61- 63	0	0	0	0	1	1
64- 66	0	0	0	2	0	2
67- 69	2	0	2	0	0	0
70- 72	0	0	0	0	0	0
73- 75	1	0	1	2	0	2
76- 78	2	1	3	2	0	2
79- 81	1	0	1	1	0	1
82- 84	0	0	0	0	0	0
85- 87	0	0	0	0	0	0
88- 90	9	2	11	0	0	0
91- 93	1	0	1	1	0	1
94- 96	0	0	0	1	0	1
97- 99	2	0	2	0	0	0
100-102	0	0	0	0	0	0
103-105	1	0	1	0	0	0
106-108	0	0	0	1	0	1
109-111	0	0	0	1	0	1
112-114	0	0	0	0	0	0
115-117	1	0	1	1	0	1
118-120	6	0	6	6	0	6

TABLES 3 & 4
DAYSLENGTH OF SENTENCE
MALE FEMALE TOTALLENGTH OF STAY
MALE FEMALE TOTAL

121-123	1	0	1	3	0	3
124-126	0	0	0	1	0	1
127-129	0	0	0	0	0	0
130-132	0	0	0	2	0	2
133-135	0	0	0	0	0	0
136-138	0	0	0	0	0	0
139-141	0	0	0	1	0	1
142-144	0	0	0	1	0	1
145-147	0	0	0	0	1	1
148-150	1	0	1	1	0	1
151-153	1	0	1	2	0	2
154-156	0	0	0	0	0	0
157-159	0	0	0	1	0	1
160-162	0	0	0	1	0	1
163-165	0	0	0	0	0	0
166-168	0	0	0	0	0	0
169-171	0	0	0	0	0	0
172-174	0	0	0	1	0	1
175-177	0	0	0	0	0	0
178-180	5	0	5	2	0	2
181-183	4	1	5	0	0	0
184-186	5	1	6	1	0	1
187-189	0	0	0	0	0	0
190-192	0	0	0	0	0	0
193-195	0	0	0	1	0	1
196-198	1	0	1	0	0	0
199-201	0	0	0	0	0	0
202-204	0	0	0	1	0	1
205-207	0	0	0	1	0	1
208-210	1	0	1	0	0	0
211-213	0	0	0	0	0	0
214-216	0	0	0	0	0	0
217-219	0	0	0	1	0	1
220-222	0	0	0	0	0	0
223-225	0	0	0	1	0	1
226-228	0	0	0	0	0	0
229-231	0	0	0	0	0	0
232-234	0	0	0	0	0	0
235-237	0	0	0	0	0	0
238-240	1	0	1	0	0	0

JMS 03.13

01/01/00 THUR 12/31/00

ESSEX JAIL
SCOC'S ANNUAL REPORTPAGE 10
01/03/01TABLES 3 & 4
DAYSLENGTH OF SENTENCE
MALE FEMALE TOTALLENGTH OF STAY
MALE FEMALE TOTAL

241-243	0	0	0	2	0	2
244-246	0	0	0	3	0	3
247-249	0	0	0	0	0	0
250-252	0	0	0	0	0	0
253-255	0	0	0	0	0	0
256-258	0	0	0	0	0	0
259-261	0	0	0	0	0	0
262-264	0	0	0	0	0	0
265-267	0	0	0	0	0	0
268-270	0	0	0	0	0	0
271-273	0	0	0	0	0	0
274-276	0	0	0	0	0	0
277-279	0	0	0	0	0	0
280-282	0	0	0	0	0	0
283-285	0	0	0	0	0	0
286-288	0	0	0	0	0	0
289-291	0	0	0	0	0	0
292-294	0	0	0	0	0	0
295-297	0	0	0	0	0	0
298-300	0	0	0	0	0	0
301-303	0	0	0	0	0	0
304-306	0	0	0	0	0	0
307-309	0	0	0	1	0	1
310-312	0	0	0	0	0	0
313-315	0	0	0	0	0	0
316-318	0	0	0	0	0	0
319-321	0	0	0	0	0	0
322-324	0	0	0	0	0	0
325-327	0	0	0	0	0	0
328-330	0	0	0	0	0	0
331-333	0	0	0	0	0	0
334-336	0	0	0	0	0	0
337-339	0	0	0	0	0	0
340-342	0	0	0	0	0	0
343-345	0	0	0	0	0	0
346-348	0	0	0	0	0	0
349-351	0	0	0	0	0	0
352-354	0	0	0	0	0	0
355-357	0	0	0	0	0	0
358-360	0	0	0	0	0	0
361-363	0	0	0	0	0	0
364-999	11	3	14	9	1	10
TOTAL	136	16	152	423	47	470

* INMATE TYPE
INTERMITTENTMALE 40
FEMALE 4

TABLE 5A

* AGES	MALE	FEMALE	TOTAL
<16	0	0	0
16	12	3	15
17	13	3	16
18	15	3	18
19	19	0	19
20	21	3	24
21	17	3	20
22	13	5	18
23	13	1	14
24	14	1	15
25	13	0	13
26	12	2	14
27	7	2	9
28	15	1	16
29	8	1	9
30	9	3	12
31	12	0	12
32	11	2	13
33	5	3	8
34	11	0	11
35	9	0	9
36	13	1	14
37	7	2	9
38	16	3	19
39	14	2	16
40	11	1	12
41	4	0	4
42	15	1	16
43	8	0	8
44	10	0	10
45	5	1	6
46	11	1	12
47	8	1	9
48	6	2	8
49	2	0	2
50	5	0	5
51	4	0	4
52	9	0	9
53	3	0	3
54	2	0	2
55	0	0	0
56	5	0	5
57	2	0	2
58>	8	0	8
TOTAL	417	51	468

TABLE 5B * AGES SUMMARY

	MALE	FEMALE	TOTAL
AGE UNDER 19	40	9	49
AGE 19 THRU 20	40	3	43
AGE 21 THRU 29	112	16	128
AGE 30 THRU 39	107	16	123
AGE 40 THRU 54	103	7	110
AGE 55 THRU 64	13	0	13
AGE GREATER 64	2	0	2
TOTALS	417	51	468

TABLE 6A * LITERACY

	MALE	FEMALE	TOTAL
GRADES 0 - 4	2	0	2
GRADES 5 - 8	17	0	17
GRADES 9 - 11	132	20	152
GRADES GRAD 12	197	19	216
GRADES 13 - 14	50	6	56
GRADES 15 +	19	6	25
TOTALS	417	51	468

TABLE 6B * READ & WRITE

	MALE	FEMALE	TOTAL
READ & WRITE	417	51	468
READ ONLY	0	0	0
NEITHER	0	0	0
TOTALS	417	51	468

TABLE 7 * RACE

	MALE	FEMALE	TOTAL
WHITE	390	45	435
BLACK	18	4	22
AM. INDIAN	2	0	2
ASIAN	3	0	3
OTHER	4	2	6
TOTALS	417	51	468

TABLE 8 * ETHNIC ORIGIN

	MALE	FEMALE	TOTAL
HISPANIC	11	2	13
NON HISPANIC	406	49	455
TOTALS	417	51	468

TABLE 9 * # OF TIMES COMMITTED

	MALE		FEMALE		TOTAL	
	SEN	UNSEN	SEN	UNSEN	SEN	UNSEN
1ST	126	269	15	33	141	302
+2ND	9	28	1	1	10	29
3RD	1	6	0	1	1	7
4TH	0	2	0	0	0	2
5TH	0	1	0	0	0	1
6TH	0	1	0	0	0	1
7TH	0	0	0	0	0	0
8TH	0	0	0	0	0	0
9TH	0	0	0	0	0	0
10+	0	0	0	0	0	0
TOTAL	136	307	16	35	152	342

JMS 03.13

01/01/00 THUR 12/31/00

ESSEX JAIL
SCOC'S ANNUAL REPORT

PAGE 13

01/03/01

TABLES 10 & 11		HOUSED IN			HOUSED OUT		
ORI	I. COUNTY	MALE	FEMALE	TOTAL	MALE	FEMALE	TOTAL
001023C	ALBANY JAIL	0	0	0	0	0	0
001013C	ALBANY PENITENTARY	0	0	0	0	0	0
002013C	ALLEGANY JAIL	0	0	0	0	0	0
003013C	BROOME JAIL	0	0	0	0	0	0
003023C	BROOME JAIL BARRKS	0	0	0	0	0	0
004013C	CATTARAUGUS JAIL	0	0	0	0	0	0
005013C	CAYUGA JAIL	0	0	0	0	0	0
006013C	CHAUTAUQUA JAIL	0	0	0	0	0	0
007013C	CHEMUNG JAIL	0	0	0	0	0	0
008013C	CHENANGO JAIL	0	0	0	0	0	0
009013C	CLINTON JAIL	0	0	0	105	49	154
010013C	COLUMBIA JAIL	0	0	0	0	0	0
011013C	CORTLAND JAIL	0	0	0	0	0	0
012013C	DELAWARE JAIL	0	0	0	0	0	0
013013C	DUTCHESS JAIL	0	0	0	0	0	0
014023C	ERIE HOLDING CTR	0	0	0	0	0	0
014033C	ERIE HC ANNEX	0	0	0	0	0	0
014013C	ERIE PENITENTIARY	0	0	0	0	0	0
015013C	ESSEX JAIL	0	0	0	0	0	0
016013C	FRANKLIN JAIL	0	0	0	53	6	59
017013C	FULTON JAIL	0	0	0	6	0	6
018013C	GENESEE JAIL	0	0	0	0	0	0
019013C	GREENE JAIL	0	0	0	0	0	0
020013C	HAMILTON JAIL	0	0	0	0	0	0
021013C	HERKIMER JAIL	0	0	0	0	0	0
022013C	JEFFERSON JAIL	0	0	0	0	0	0
024013C	LEWIS JAIL	0	0	0	0	0	0
025013C	LIVINGSTON JAIL	0	0	0	0	0	0
026013C	MADISON JAIL	0	0	0	0	0	0
027023C	MONROE JAIL	0	0	0	0	0	0
027013C	MONROE PENITENTARY	0	0	0	0	0	0
028013C	MONTGOMERY JAIL	0	0	0	0	0	0
029013C	NASSAU CORCTNL CTR	0	0	0	0	0	0
029023C	NASSAU WORK RELSE	0	0	0	0	0	0
031013C	NIAGARA JAIL	0	0	0	0	0	0
032013C	ONEIDA JAIL	0	0	0	0	0	0

JMS 03.13

01/01/00 THUR 12/31/00

ESSEX JAIL
SCOC'S ANNUAL REPORTPAGE 14
01/03/01TABLES 10 & 11
ORI I. COUNTY

		MALE	HOUSED IN FEMALE	TOTAL	MALE	HOUSED OUT FEMALE	TOTAL
033023C	ONONDAGA JAIL	0	0	0	0	0	0
033013C	ONONDAGA PENITNTRY	0	0	0	0	0	0
034013C	ONTARIO JAIL	0	0	0	0	0	0
035013C	ORANGE JAIL	0	0	0	0	0	0
036013C	ORLEANS JAIL	0	0	0	0	0	0
037013C	OSWEGO JAIL	0	0	0	0	0	0
038013C	OTSEGO JAIL	0	0	0	0	0	0
039013C	PUTNAM JAIL	0	0	0	0	0	0
041013C	RENSSELAER JAIL	0	0	0	0	0	0
043013C	ROCKLAND JAIL	0	0	0	0	0	0
044013C	ST LAWRENCE JAIL	0	0	0	0	0	0
045013C	SARATOGA JAIL	0	0	0	0	0	0
046013C	SCHENECTADY JAIL	0	0	0	0	3	3
047013C	SCHOHARIE JAIL	0	0	0	0	0	0
048013C	SCHUYLER JAIL	0	0	0	0	0	0
049013C	SENECA JAIL	0	0	0	0	0	0
050013C	STEUBEN JAIL	0	0	0	0	0	0
051013C	SUFFOLK JAIL	0	0	0	0	0	0
051023C	SUFFOLK HONOR FARM	0	0	0	0	0	0
052013C	SULLIVAN JAIL	0	0	0	0	0	0
053013C	TIOGA JAIL	0	0	0	0	0	0
054013C	TOMPKINS JAIL	0	0	0	0	0	0
055013C	ULSTER JAIL	0	0	0	0	0	0
056013C	WARREN JAIL	0	0	0	2	0	2
057013C	WASHINGTON JAIL	0	0	0	0	0	0
058013C	WAYNE JAIL	0	0	0	0	0	0
059023C	WESTCHESTER JAIL	0	0	0	0	0	0
059013C	WESTCHESTER PENTRY	0	0	0	0	0	0
059033C	WESTCHESTER WMN UN	0	0	0	0	0	0
060013C	WYOMING JAIL	0	0	0	0	0	0
061013C	YATES JAIL	0	0	0	0	0	0
	TOTAL	0	0	0	166	58	224

* HOUSED IN

II. * STATE INMATES	MALE	FEMALE	TOTAL
PAROLE VIOL	6	0	6
CORAM NOBIS	0	0	0
OTHER	0	0	0
TOTAL	6	0	6
III. * FEDERAL INMATES	MALE	FEMALE	TOTAL
MILITARY	2	0	2
ILL. ALIENS XX	0	0	0
OTHER XX	2	0	2
TOTAL	0	0	0
IV. * OTHER INMATES	MALE	FEMALE	TOTAL
TOTAL	0	0	0

* HOUSED OUT

II. * MENTAL HEALTH FAC	MALE	FEMALE	TOTAL
CENTRAL NY PSY CTR	1	0	1
HUTCHINGS PSY CTR	0	0	0
MID HUDSON PSY CTR	0	0	0
MENTAL HEALTH -SJO	0	0	0
MENTAL HEALTH -NON	0	0	0
TOTAL	1	0	1
III. * MEDICAL HOSPITAL	MALE	FEMALE	TOTAL
TOTAL	4	0	4
IV. * OTHER INMATES	MALE	FEMALE	TOTAL
TOTAL	0	0	0

I CERTIFY THAT THIS ANNUAL REPORT IS CORRECT
