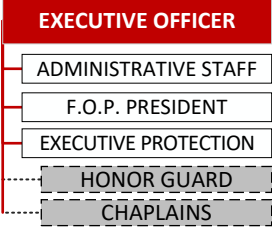
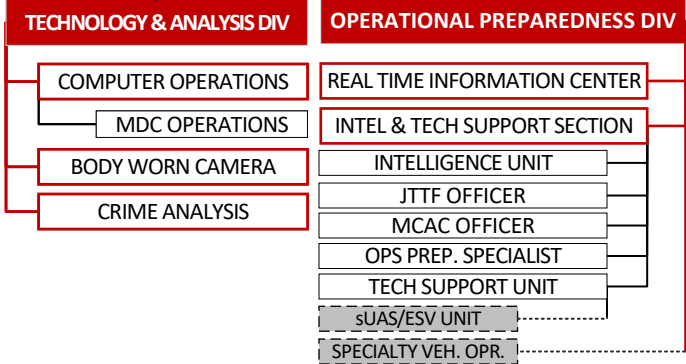




# CHIEF OF POLICE

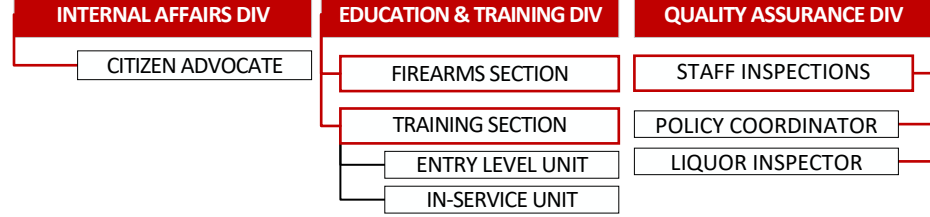
## TECHNOLOGY & PREPAREDNESS BUREAU



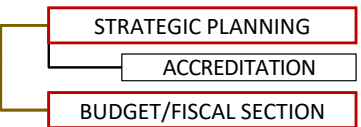
OFFICE OF PUBLIC AFFAIRS

LEGAL ADVISOR (OFFICE OF LAW)

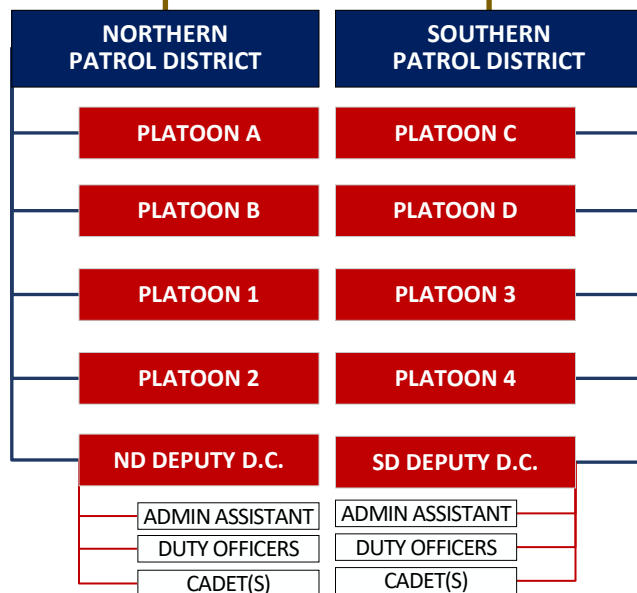
## PROFESSIONAL STANDARDS BUREAU



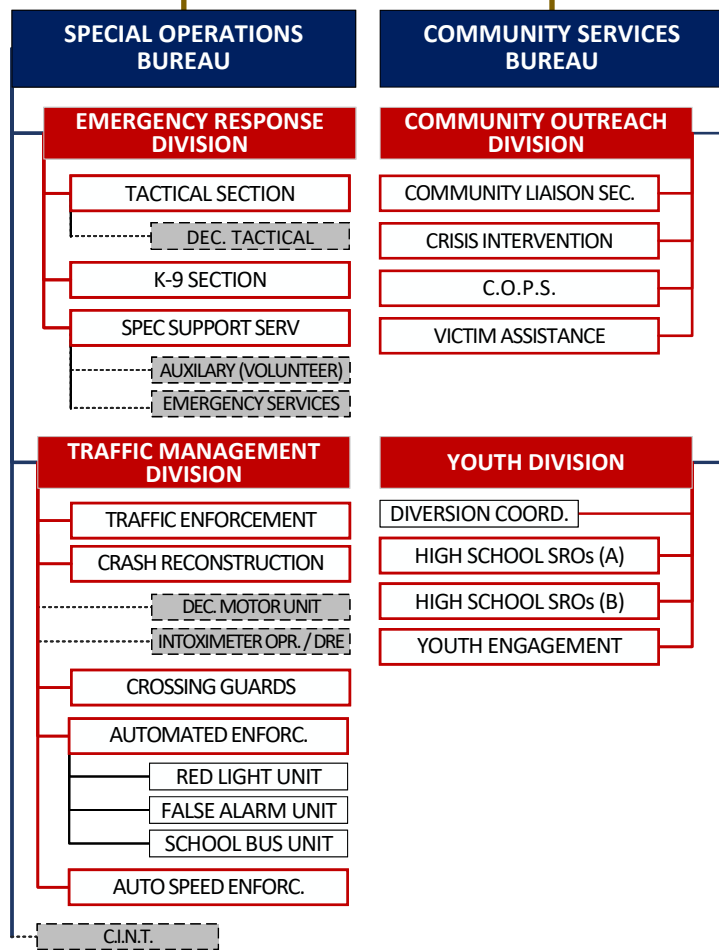
# COLONEL



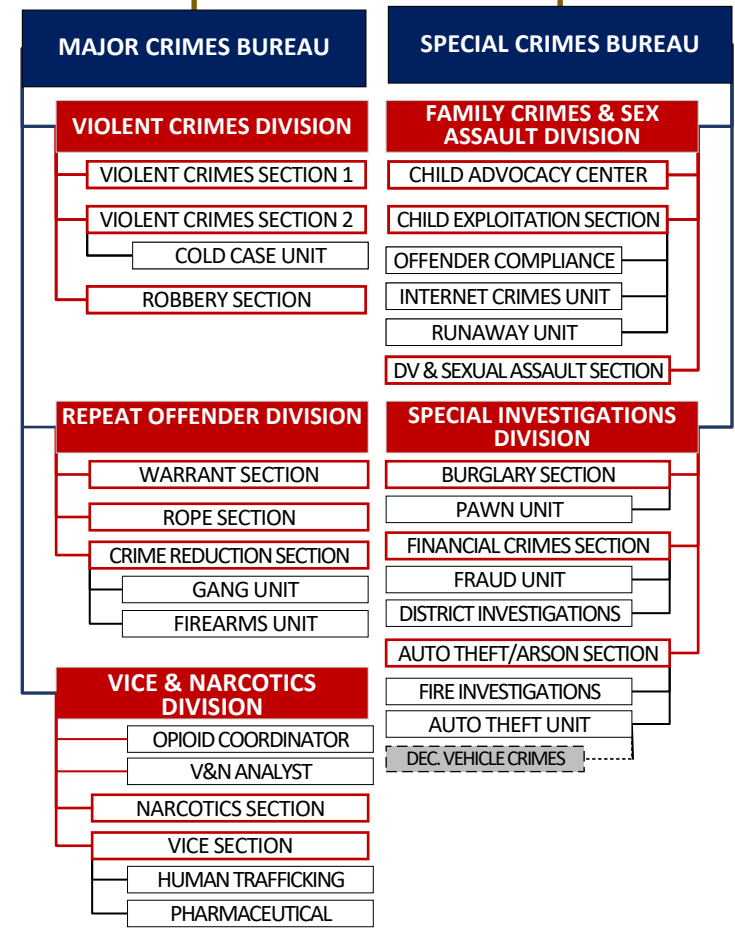
## FIELD OPERATIONS COMMAND



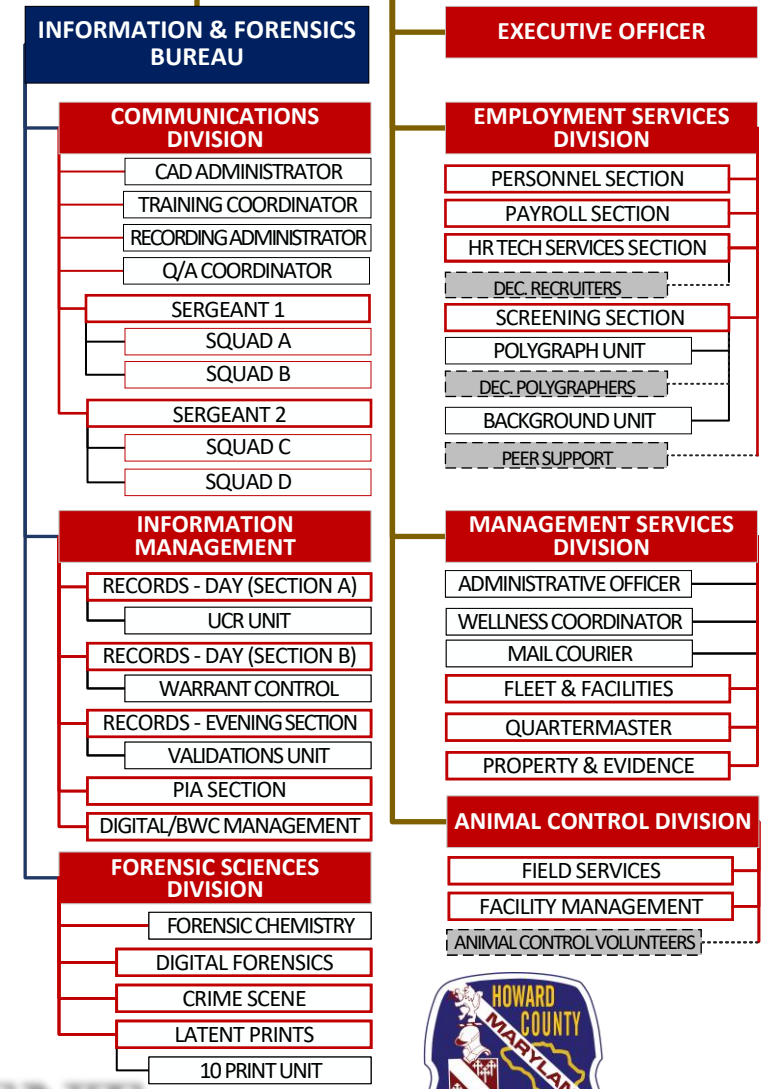
## SPECIAL OPERATIONS COMMAND



## CRIMINAL INVESTIGATIONS COMMAND



## ADMINISTRATION COMMAND



HOWARD COUNTY POLICE DEPARTMENT ORGANIZATIONAL STRUCTURE

**LEGEND**

- CHIEF OF POLICE
- COMMAND: UNDER THE DIRECTION OF THE DEPUTY CHIEF (MAJOR)
- BUREAU OR DISTRICT: COMMANDED BY A CAPTAIN OR CIVILIAN ADMINISTRATOR
- DIVISION OR PLATOON: COMMANDED BY A LIEUTENANT OR CIVILIAN MANAGER
- SECTION OR SQUAD: SUPERVISED BY A SERGEANT OR CIVILIAN SUPERVISOR
- UNIT: ORGANIZATIONAL COMPONENT OF A SECTION
- DECENTRALIZED TEAM: NOT A FULL TIME OR PRIMARY ASSIGNMENT

# HOWARD COUNTY POLICE DEPARTMENT ORGANIZATIONAL STRUCTURE



HOWARD COUNTY POLICE DEPARTMENT ORGANIZATIONAL CHART

APPROVED BY A/CHIEF TERENCE O. BENN ON JUNE 17, 2026

Effective Date: JUNE 17, 2026 ADMIN: MM/rk