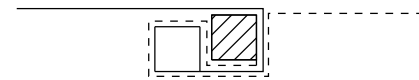


Place end-post (stake) of first silt fence adjacent to end-post (stake) of second silt fence with fabric positioned as shown.

**STEP 1**

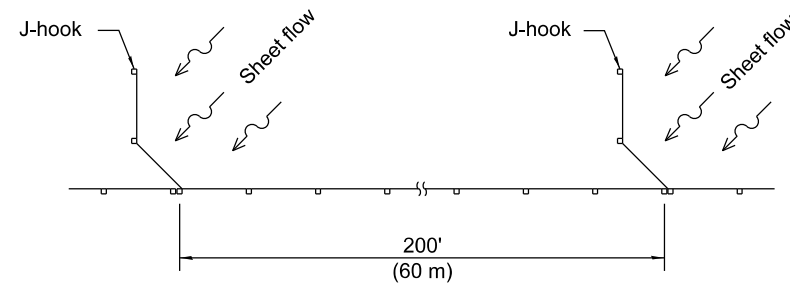


Rotate posts (stakes) together 180° clockwise and drive both posts (stakes) 18 (450) into ground.

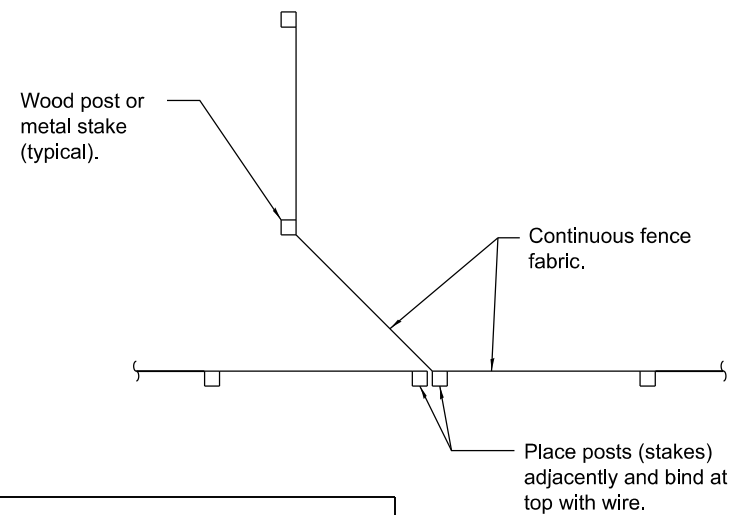
**STEP 2**

**ATTACHING TWO SILT FILTER FENCES**

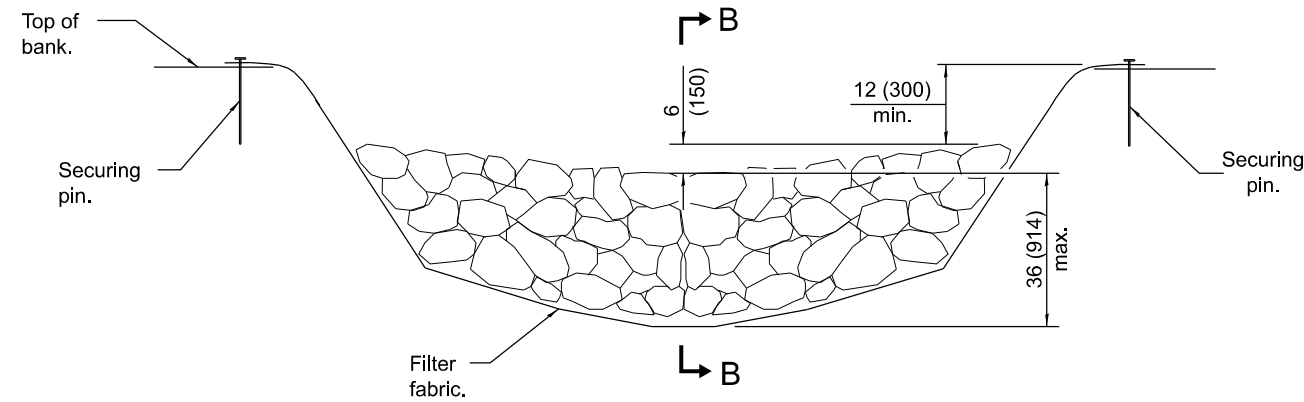
(Not applicable for J-hooks)



**SILT FILTER J-HOOK PLACEMENT**

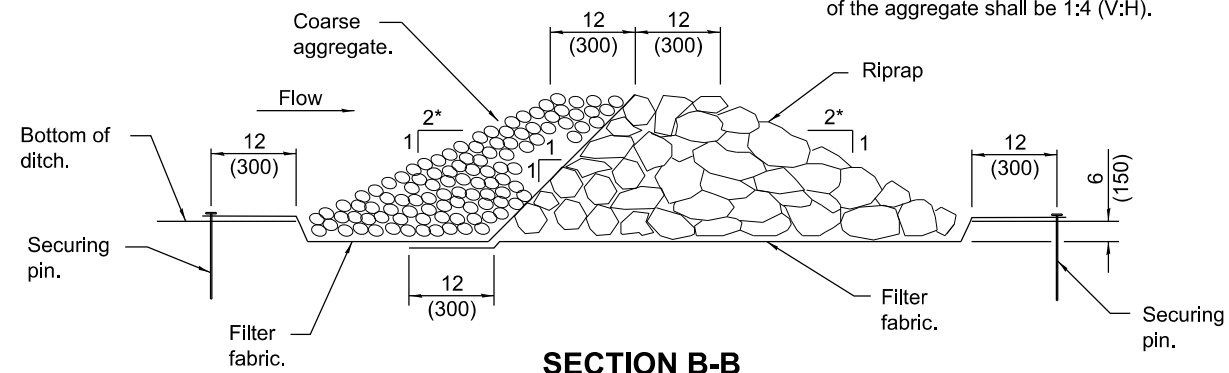


**J-HOOK**



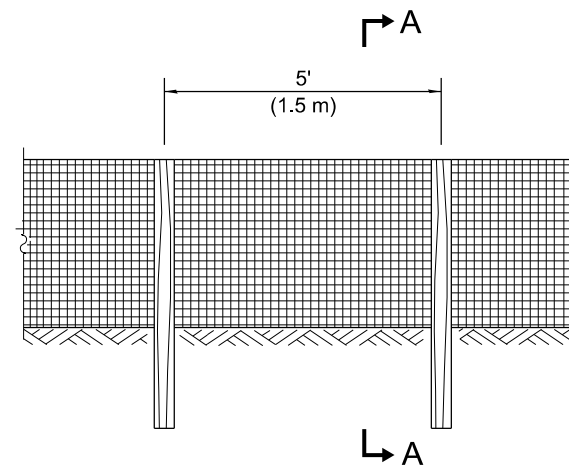
**ELEVATION**

\* When the ditch check is within the clear zone and the road is open to traffic, the traffic approach slope of the aggregate shall be 1:4 (V:H).



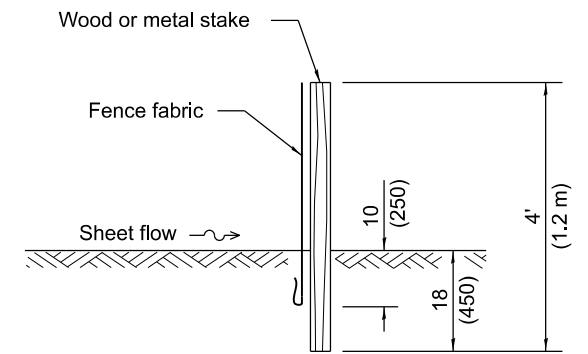
**SECTION B-B**

**AGGREGATE DITCH CHECK**

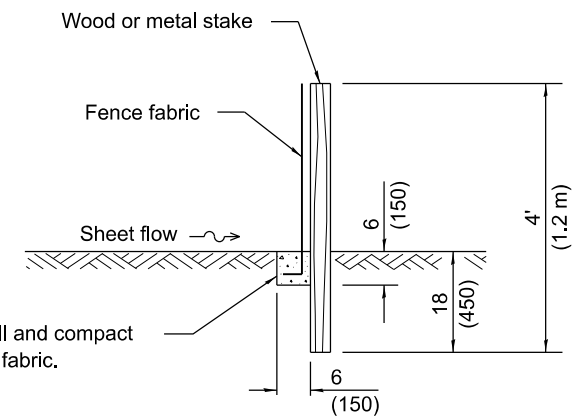


**ELEVATION**

**SILT FILTER FENCE AS A PERIMETER EROSION BARRIER**



**SLICE METHOD**



**TRENCH METHOD**

**SECTION A-A**

Excavate, backfill and compact trench to secure fabric.

**GENERAL NOTES**

The installation details and dimensions shown for perimeter erosion barriers shall also apply for inlet and pipe protection.

All dimensions are in inches (millimeters) unless otherwise shown.

Illinois Department of Transportation

APPROVED January 1, 2013  
*Michael Beard*  
 ENGINEER OF POLICY AND PROCEDURES

APPROVED January 1, 2013  
*[Signature]*  
 ENGINEER OF DESIGN AND ENVIRONMENT

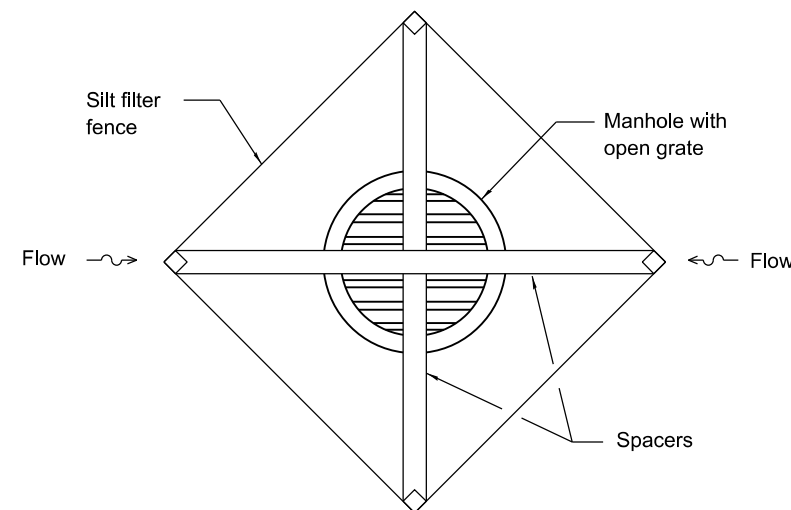
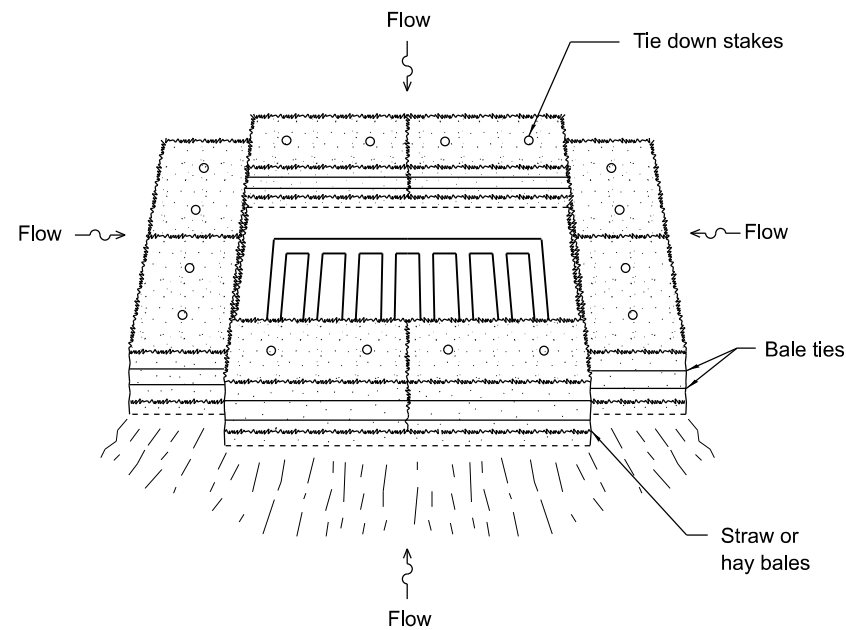
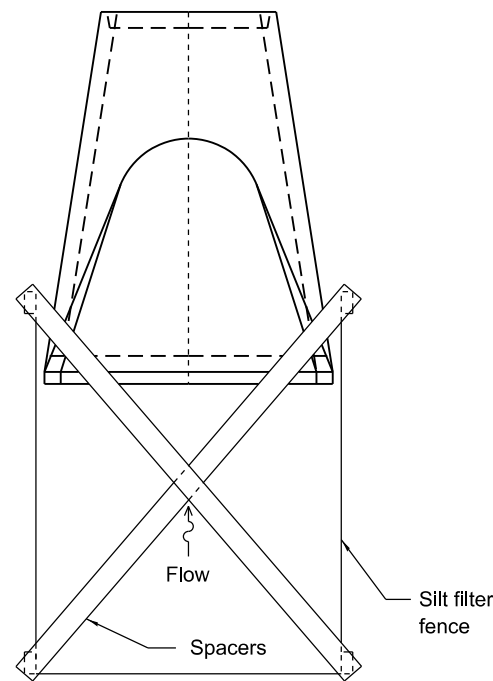
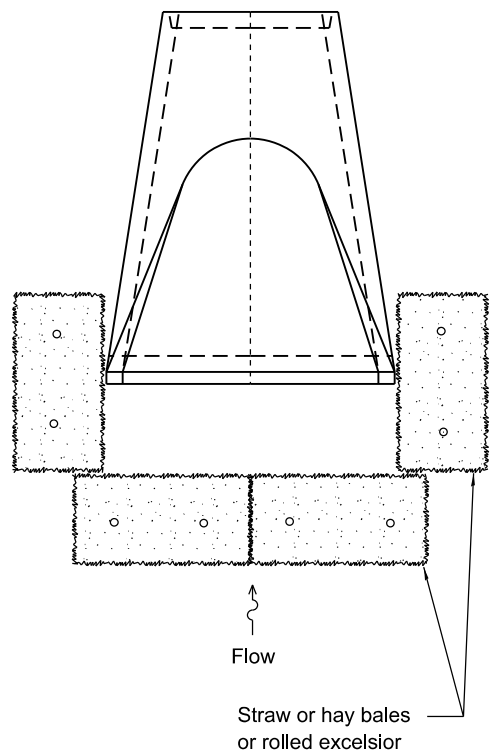
ISSUED 1-1-97

DATE	REVISIONS
1-1-13	Corrected notation for flowline (f) on SEDIMENT BASIN ELEVATION
1-1-12	Omitted hay/straw perimeter barrier. Added SLICE METHOD to SECTION A-A

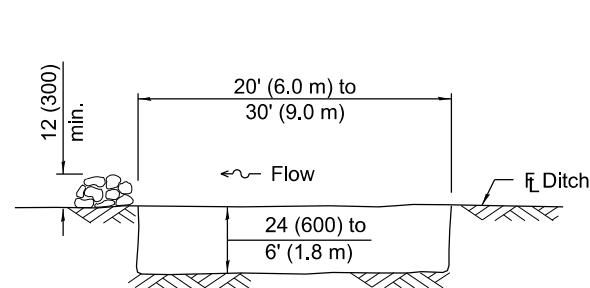
**TEMPORARY EROSION CONTROL SYSTEMS**

(Sheet 1 of 2)

**STANDARD 280001-07**

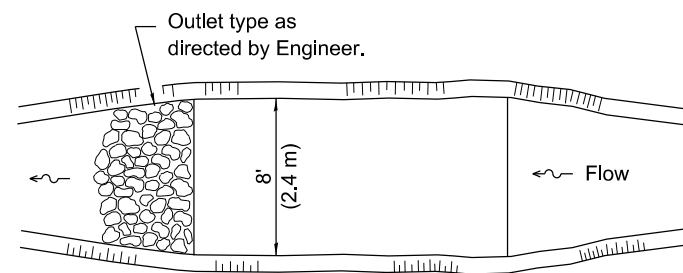


**INLET AND PIPE PROTECTION**



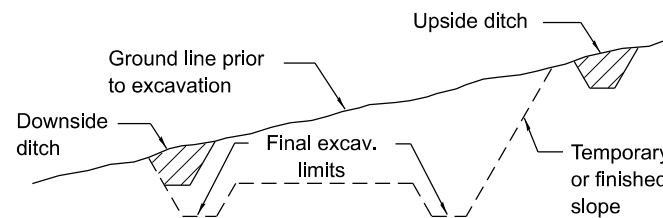
The performance of the basin will improve if put into a series.

**ELEVATION**

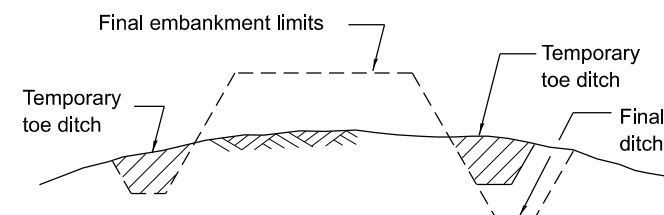


The long dimension should be parallel with the direction of the flow. Accumulated silt shall be removed anytime the basins become 75% filled.

**PLAN**



**TYPICAL CUT CROSS-SECTION**



**TYPICAL FILL CROSS-SECTION**

**TEMPORARY DITCHES FOR CUT & FILL SECTIONS**

**SEDIMENT BASIN**

Illinois Department of Transportation

APPROVED January 1, 2013  
*Michael Brand*  
 ENGINEER OF POLICY AND PROCEDURES

APPROVED January 1, 2013  
*[Signature]*  
 ENGINEER OF DESIGN AND ENVIRONMENT

ISSUED 1-1-97

**TEMPORARY EROSION CONTROL SYSTEMS**

(Sheet 2 of 2)

**STANDARD 280001-07**