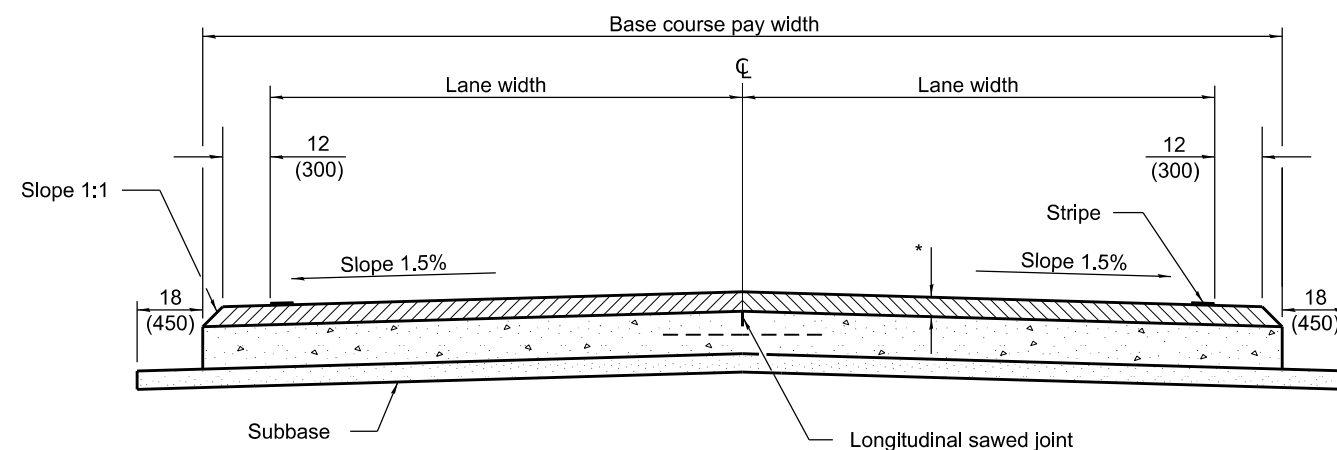
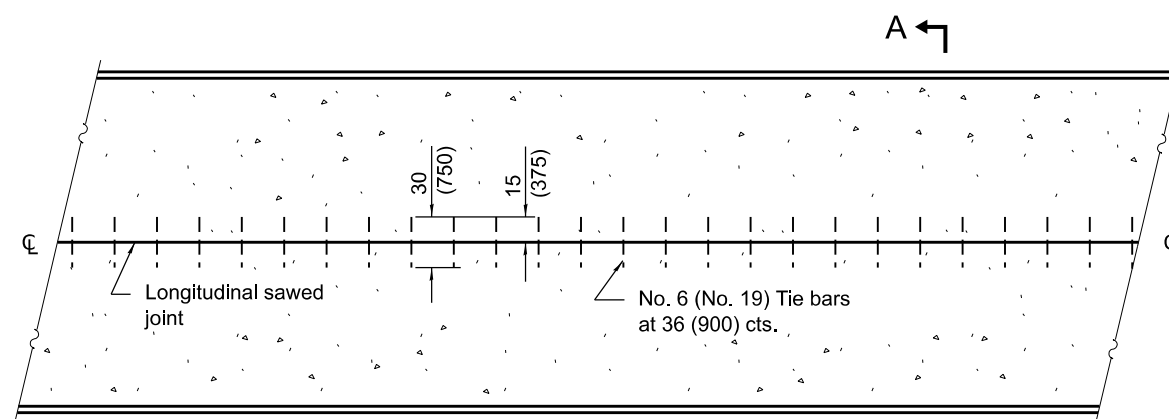


**SECTION A-A**  
(TYPICAL 2 LANE WITH SHOULDERS)

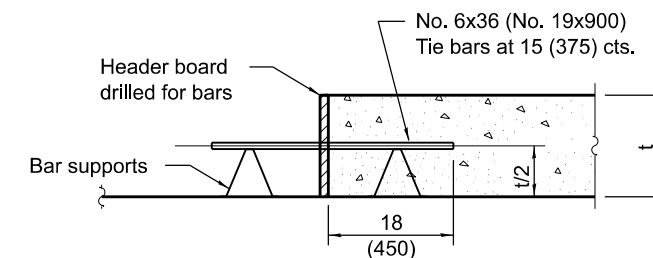
\* HMA binder and surface courses



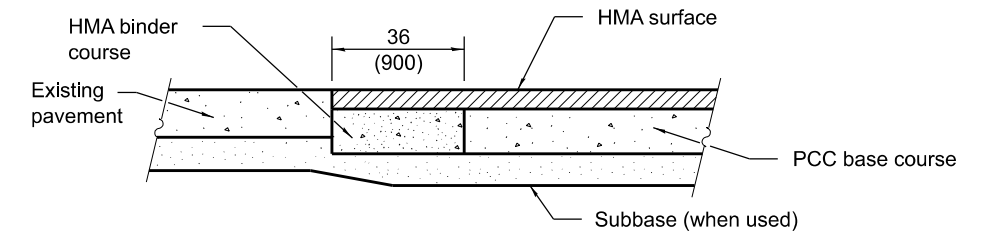
**ALTERNATE SECTION A-A**  
(TYPICAL 2 LANE WITH SHOULDERS)



**PLAN**



**TRANSVERSE CONSTRUCTION JOINT**



**LONGITUDINAL SECTION SHOWING  
CONSTRUCTION ADJACENT  
TO EXISTING PAVEMENT**

### GENERAL NOTES

The longitudinal sawed joint shall be as detailed on Standard 420001 except the sawed groove does not require sealing.

All dimensions are in inches (millimeters) unless otherwise shown.

Illinois Department of Transportation	
APPROVED <u>January 1</u> 2018  ENGINEER OF POLICY AND PROCEDURES	ISSUED 1-1-97
APPROVED <u>January 1</u> 2018  ENGINEER OF DESIGN AND ENVIRONMENT	

DATE	REVISIONS
1-1-18	Changed tie bar spacing to 36 (900) cts.
1-1-08	Switched units to English (metric).

## PCC BASE COURSE WITH HMA BINDER AND SURFACE COURSES

**STANDARD 353001-05**