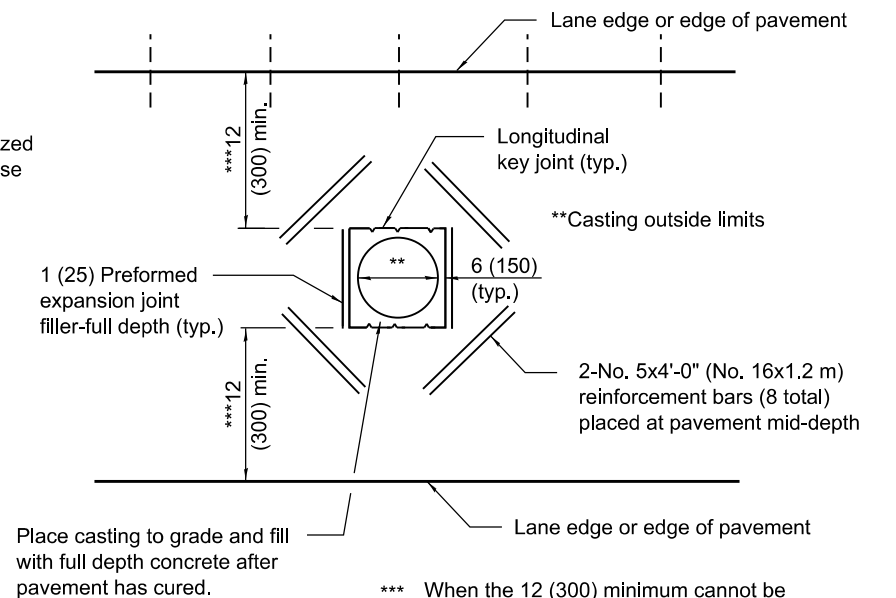
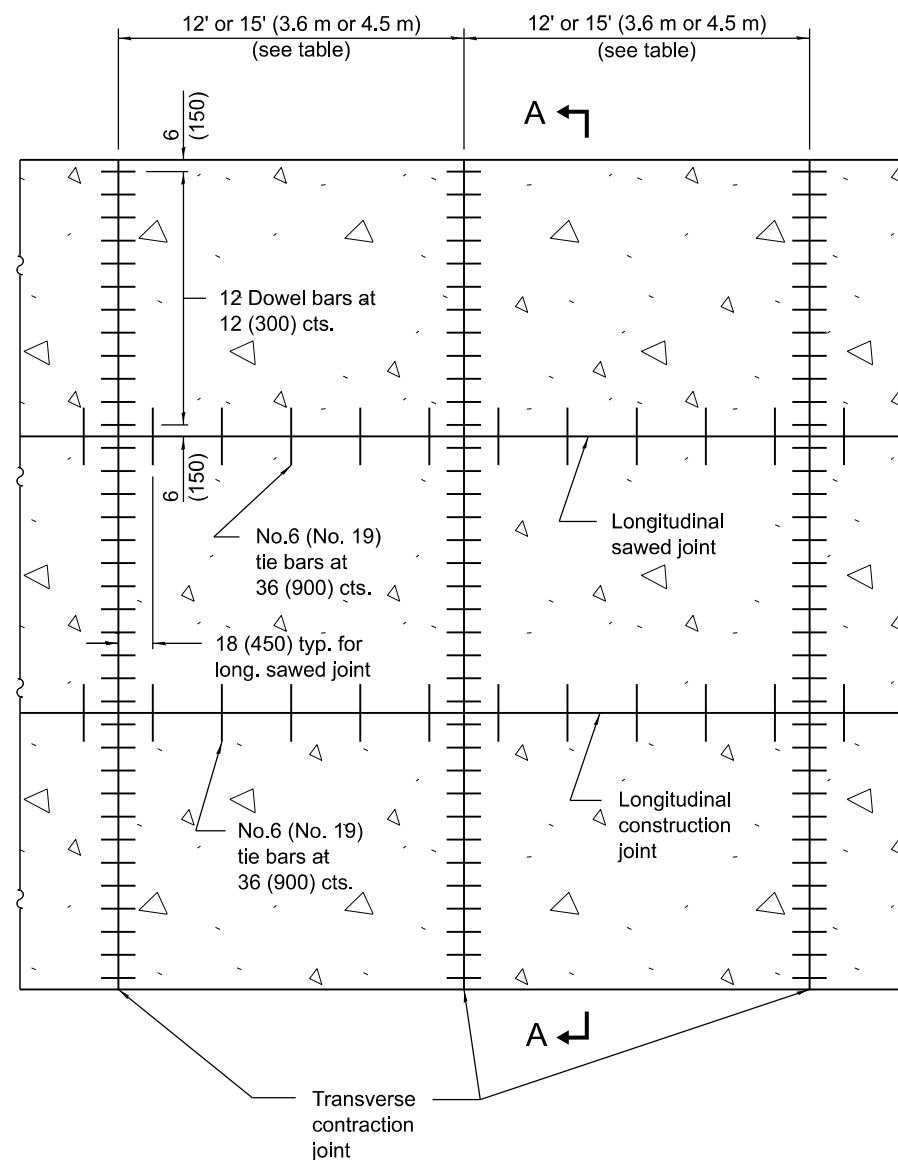


SECTION A-A
(TYPICAL 3-LANE, 1-WAY WITH SHOULDERS)



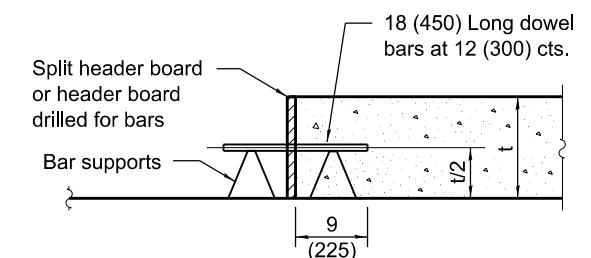
**DETAIL OF ADDED REINFORCEMENT
FOR PAVEMENT BLOCK-OUTS**



PAVEMENT PLAN

Pavement Thickness	Spacing of Transverse Contraction Joints
Less than 10 (250)	12' (3.6 m) *
10 (250) and greater	15' (4.5 m) *

* When placed adjacent to existing PCC pavement, use a spacing between 12' (3.6 m) and 18' (5.5 m) so the joints are in prolongation with existing transverse joints. Also adjust the spacing of tie bars in the longitudinal joint(s) to maintain a clearance of 9 (225) from the end of the dowel bars.



TRANSVERSE CONSTRUCTION JOINT

GENERAL NOTES

See Standard 420001 for details of joints not shown.

All dimensions are in inches (millimeters) unless otherwise shown.

DATE	REVISIONS
1-1-22	Revised spacing of transverse contraction joints and header board callout.
1-1-15	Changed spacing of tie bars to 36 (900).

**36' (10.8 m) JOINTED
PCC PAVEMENT**

STANDARD 420106-07