

GENERAL NOTES

Transverse joints may be moved to accommodate roundout. Edge of circular joint shall be minimum 24 (600) from transverse joint. Relocated transverse joint shall be continuous from edge of pavement to edge of pavement.

The transverse joint spacing should be adjusted to use the DETAIL NEAR TRANSVERSE JOINT. If the joint cannot be adjusted to give the 12 (300) min. offset, use the DETAIL AT TRANSVERSE JOINT and ensure the joint is centered in the structure as shown.

Circular form shall be removed prior to drill and grout of tie bars.

Drill and grout is preferred, however tie bars can be poured in place if clearance is provided to outer edge of frame. Maximum 2 (50) clearance.


Shims shall be used to adjust all frames. After adjusting mortar has cured, the shims shall be removed and the voids under the frames filled with nonshrink grout.

Hoop reinforcement shall be one piece construction having a minimum lap length of 24 (600).

All situations not shown and may require combination of details.

WHEN USING CAST IN PLACE:
Frame shall be anchored to the structure to prevent movement during the paving operation.

All dimensions are in inches (millimeters) unless otherwise shown.



Illinois Department of Transportation

APPROVED January 1, 2018

Michael Brand

ENGINEER OF POLICY AND PROCEDURES

APPROVED January 1, 2018

Matthew M. Adams

ENGINEER OF DESIGN AND ENVIRONMENT

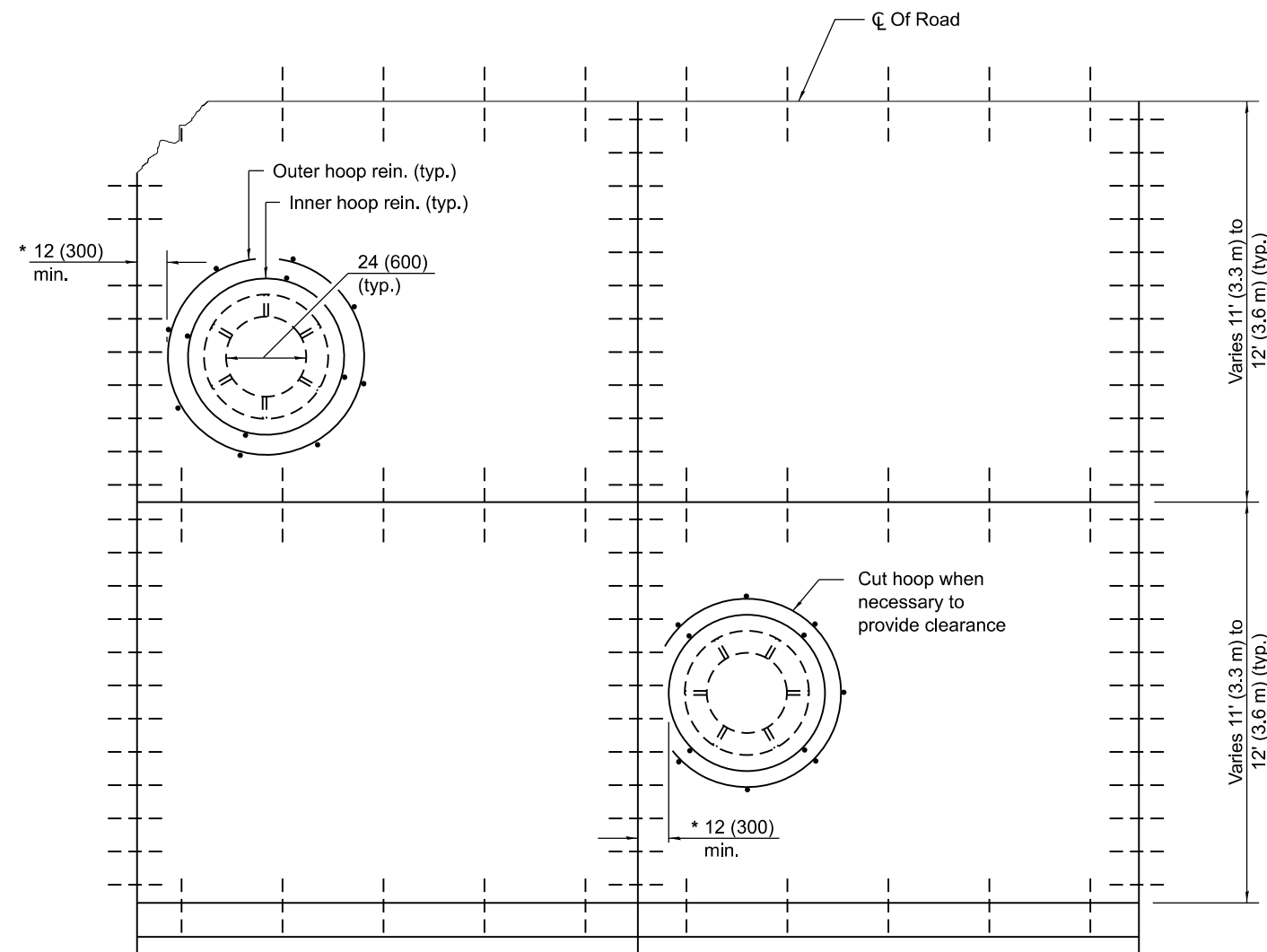
ISSUED 1-1-97

DATE	REVISIONS
1-1-18	Revised standard for 36 (900)
	tie bar spacing. Revised
	General Notes.
1-1-11	Corrected 'T/2' dim. on
	DETAIL OF REINFORCEMENT
	FOR PAVEMENT ROUNDOUT.

**PCC PAVEMENT
ROUNDOUTS**

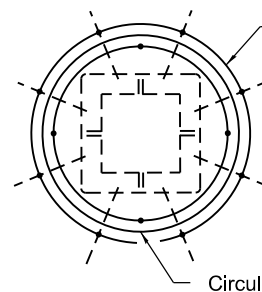
(Sheet 1 of 2)

STANDARD 420111-04



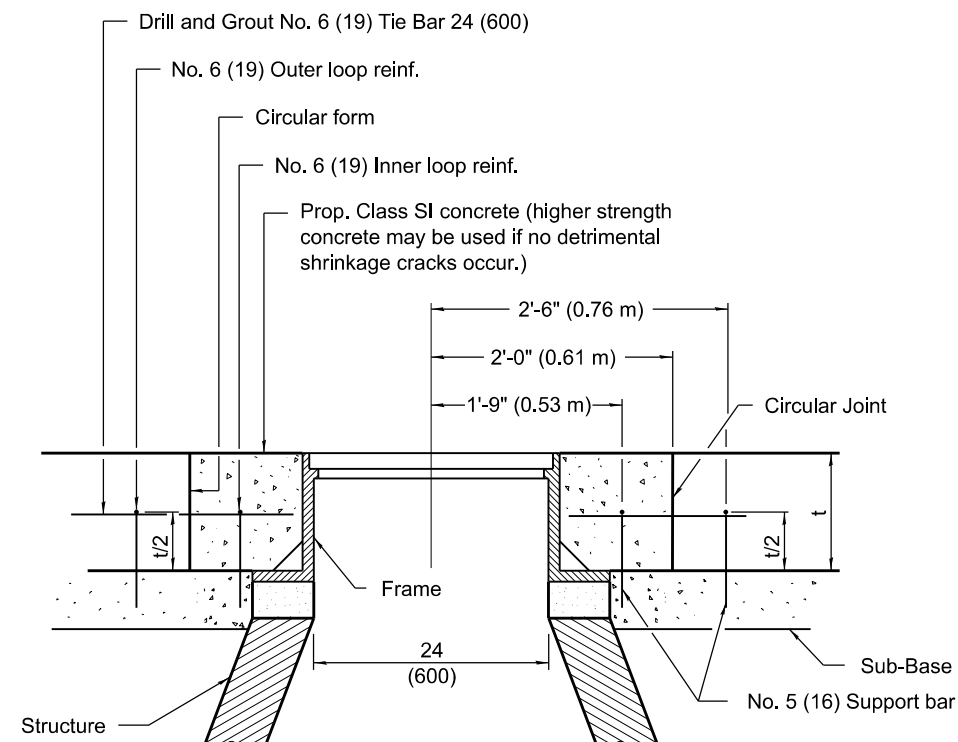
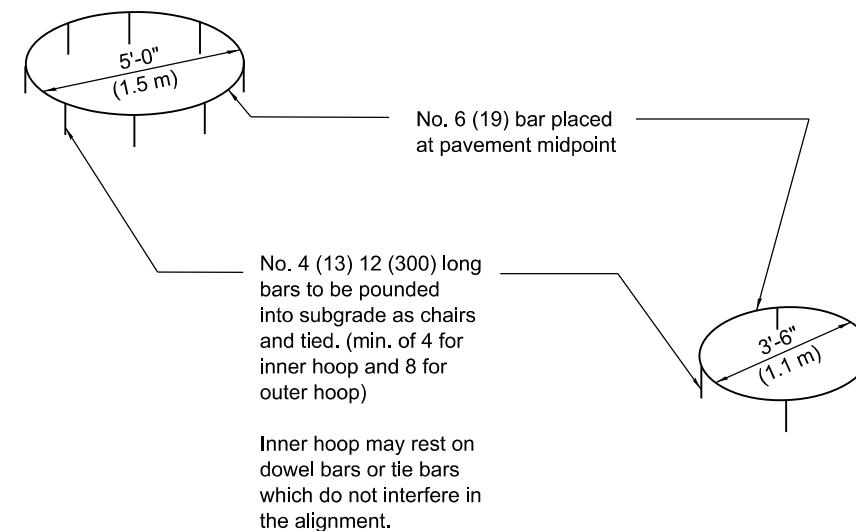
CAST IN PLACE DETAIL

* Less than 12 (300) formed roundout to be used.



All dimensions same for the majority of circular frame & grates. For larger structures increase hoop bar and circular form diameter by 12 (300) each and add two additional equally spaced tie bars.

ROUNDOUT FOR SQUARE FRAME & GRATE AND MANHOLES



Note:
Type 1 or Type 5 Frame
and Grate may be used

DETAIL OF REINFORCEMENT FOR PAVEMENT ROUNDOUT