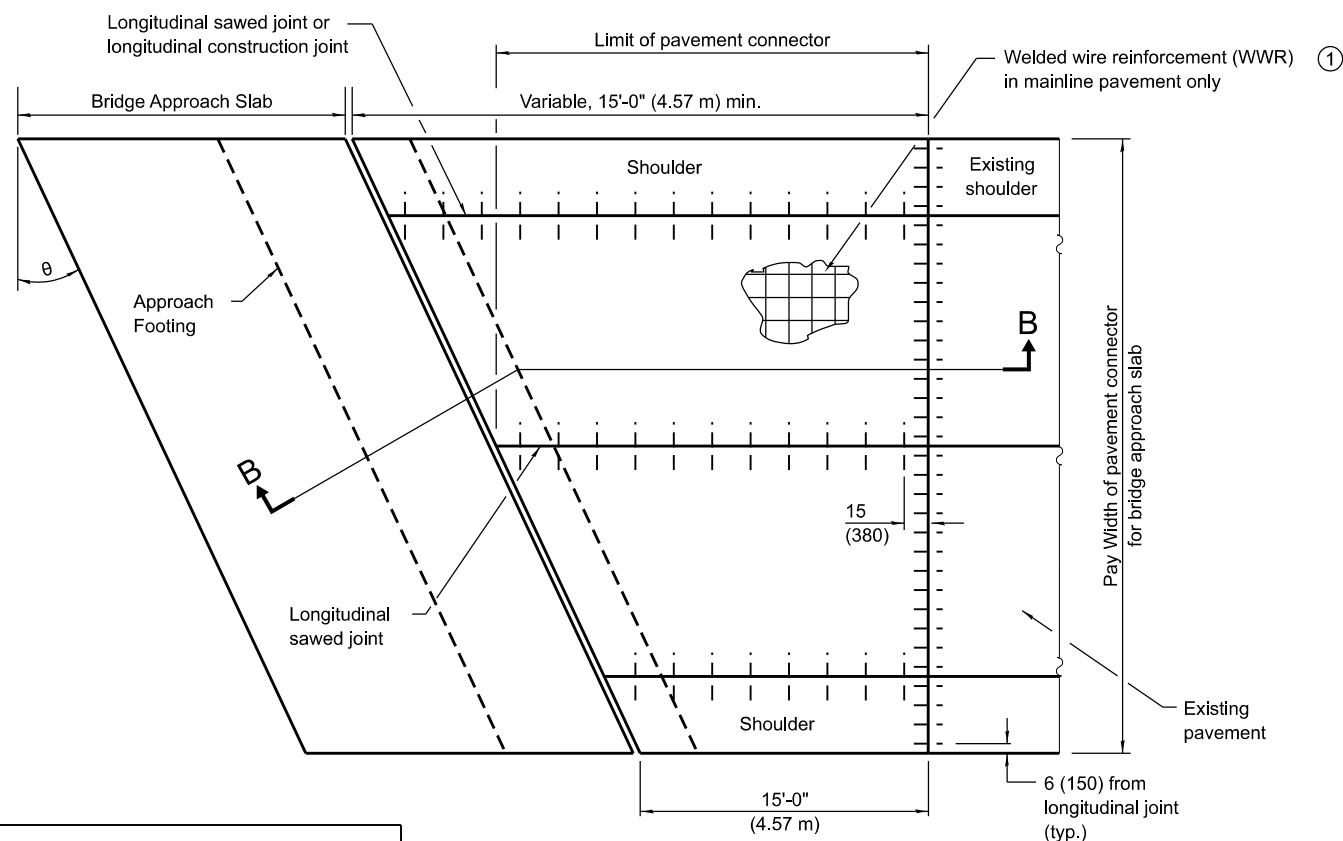
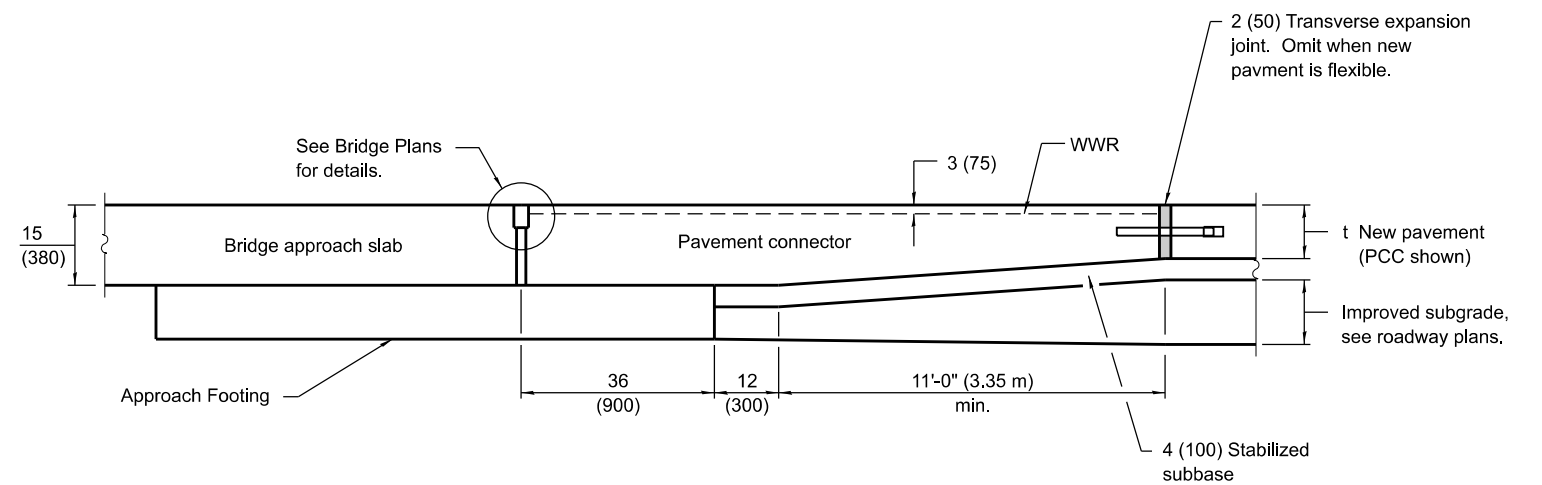


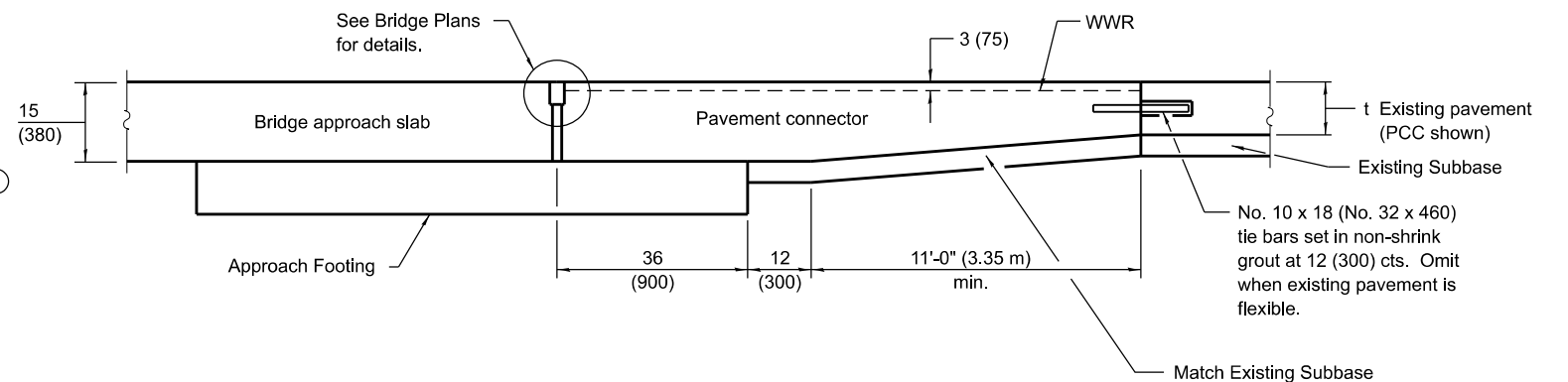
**PLAN
NEW CONSTRUCTION**



**PLAN
EXISTING CONSTRUCTION**



SECTION A-A



SECTION B-B

- ① WWR shall be 0.11 sq. in./ft. (230 sq. mm/m) in both directions. Maximum wire spacing shall be 6 (150). Minimum lap distance shall be two cross wires.

GENERAL NOTES

THICKNESS-"t"=Thickness of Pavement.

See Standard 420001 for pavement joint details not shown.

See Standard 610001 for shoulder inlet with curb when required.

See plans for details of bridge approach slab, approach footing and joint treatment.

All dimensions are in inches (millimeters) unless otherwise shown.

DATE	REVISIONS
1-1-19	Changed rebar in pavement connector to welded wire reinforcement.
4-1-16	Revised pavement connector to be rigid only. Omitted WFB term. joint. Renamed Std.

**PAVEMENT CONNECTOR (PCC)
FOR BRIDGE APPROACH SLAB**

STANDARD 420401-13