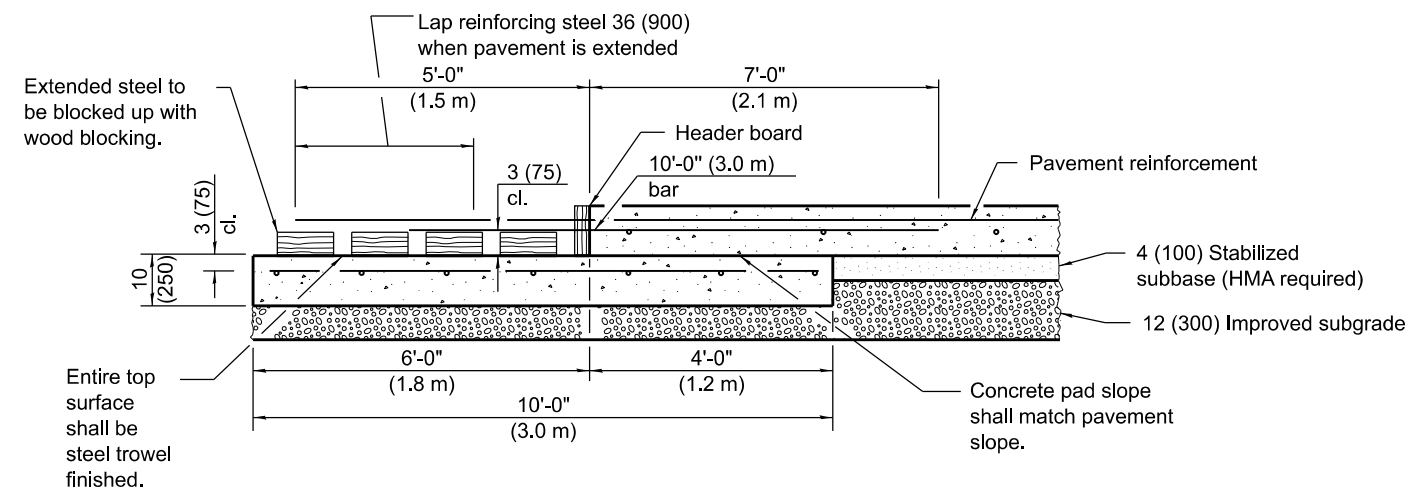
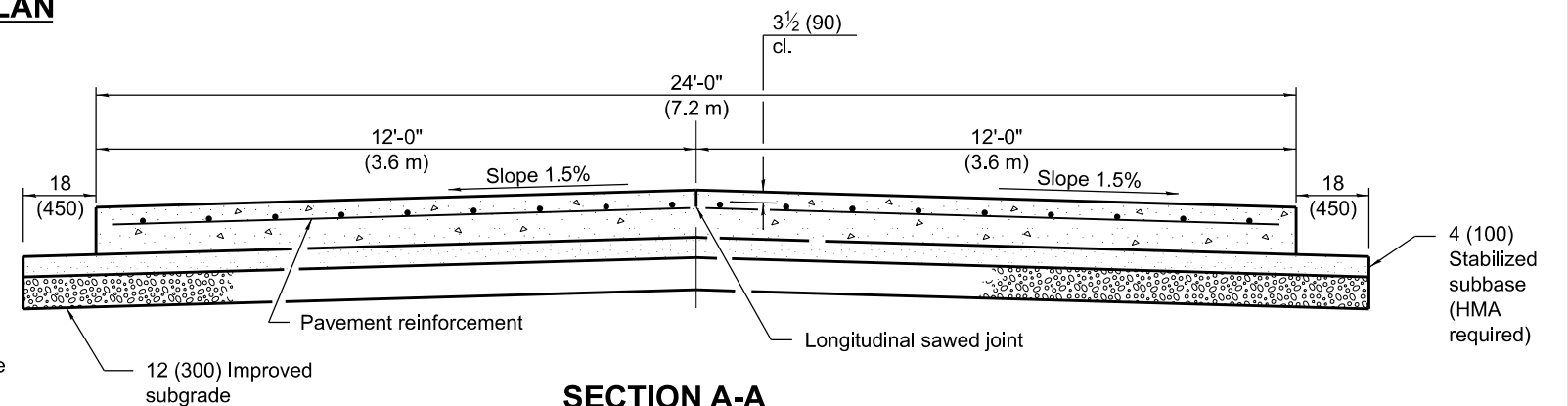


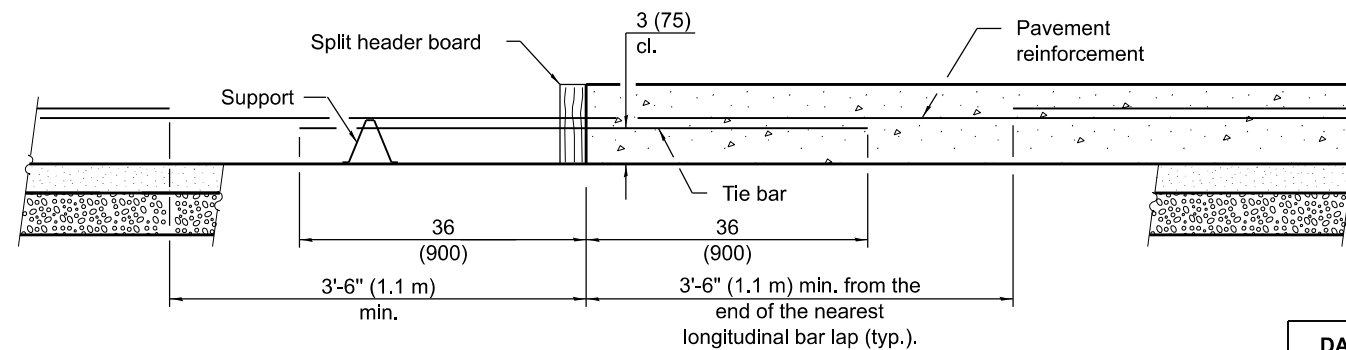
**PLAN**



**TRANSVERSE TERMINAL JOINT  
SECTION B-B**



**SECTION A-A  
(TYPICAL 2-LANE WITH SHOULDERS)**



**TRANSVERSE CONSTRUCTION JOINT**

**GENERAL NOTES**

See Standard 421001 for details of pavement reinforcement.

See Standards 420001 and 420401 for joint details not shown.

All dimensions are in inches (millimeters) unless otherwise shown.

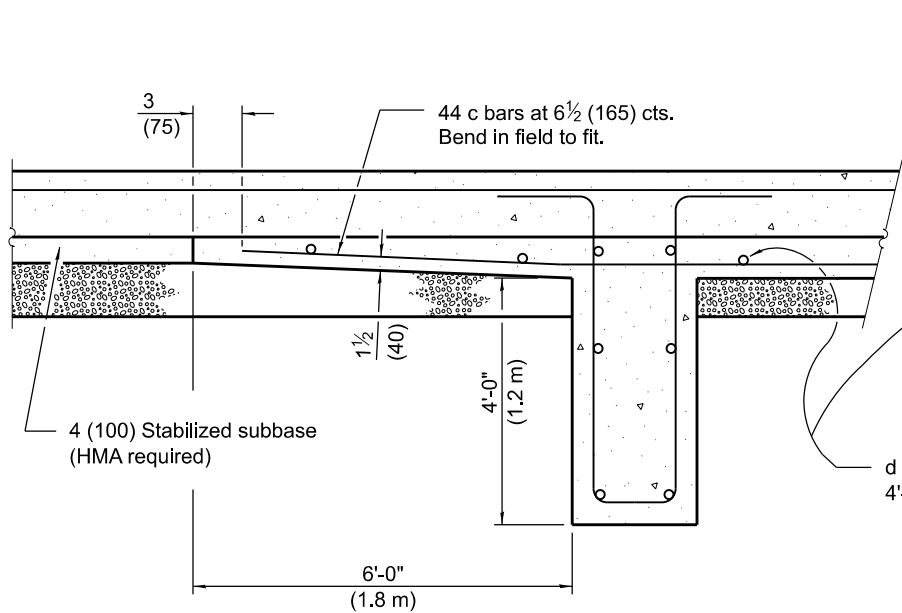
Illinois Department of Transportation	
APPROVED January 1, 2018 <i>Michael Brand</i> ENGINEER OF POLICY AND PROCEDURES	ISSUED 1-1-97
APPROVED January 1, 2018 <i>Maureen M. Belsky</i> ENGINEER OF DESIGN AND ENVIRONMENT	

DATE	REVISIONS
1-1-18	Changed tie bar spacing to 36 (900) cts.
1-1-08	Switched units to English (metric).
	Revised Lug. Sys. Table

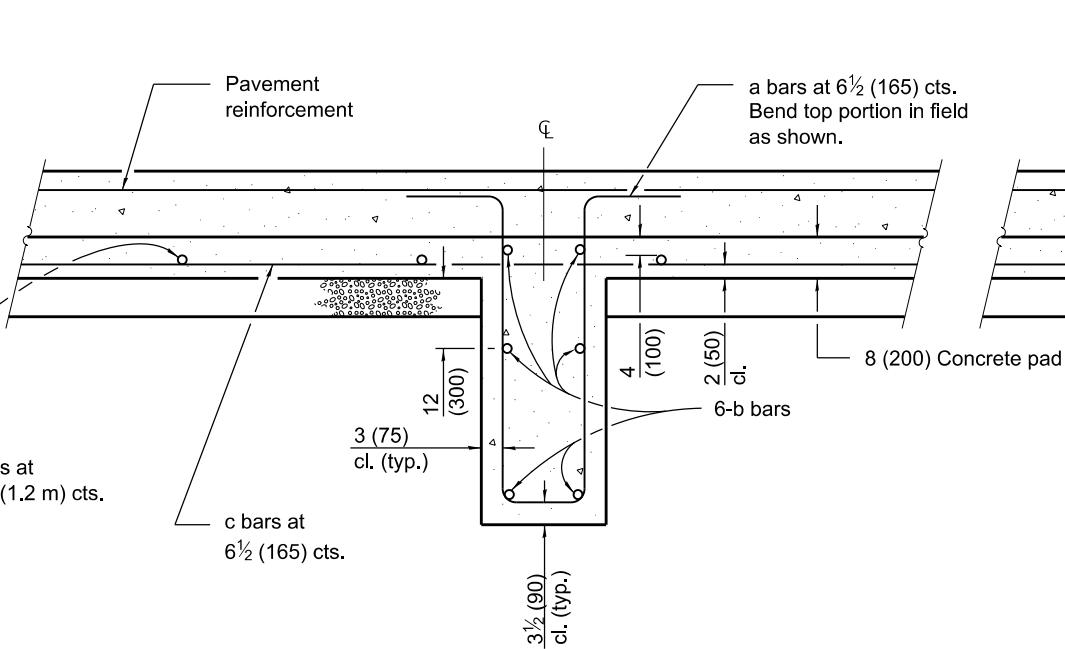
**24' (7.2 m)  
CRC PAVEMENT  
(WITH LUG SYSTEM)**

(Sheet 1 of 2)

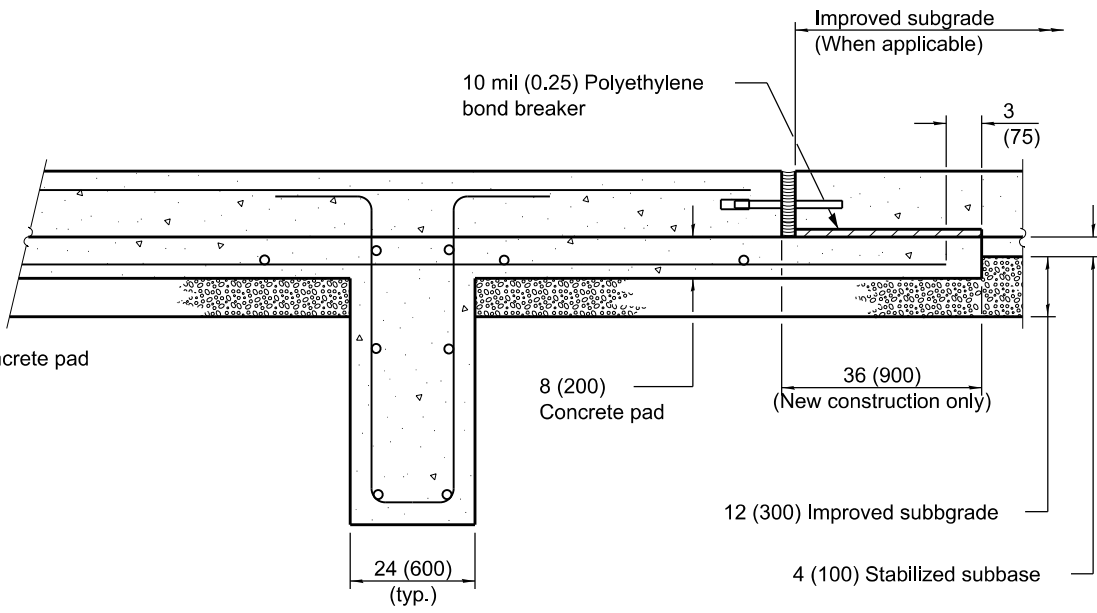
**STANDARD 421201-07**



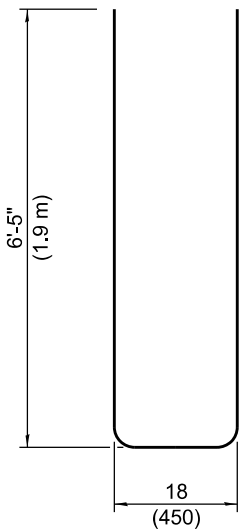
**SECTION AT LUG W**



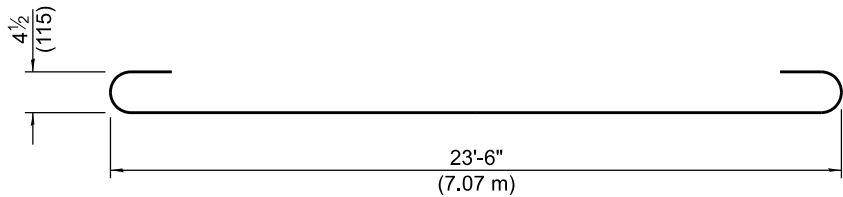
**SECTION AT LUG X**



**SECTION AT LUG Y**



**BAR a**



**BAR b**

MATERIALS REQUIRED FOR (1) ONE LUG SYSTEM (Excluding Pavement Concrete and Pavement Reinforcement)				
Bar	Qty.	Size	Length	Shape
a	132	No. 8 (No. 25)	14'-0" (4.25 m)	
b	18	No. 5 (No. 16)	24'-9" (7.43 m)	
c	132	No. 5 (No. 16)	20'-0" (6.10 m)	
d	28	No. 4 (No. 13)	11'-9" (3.52 m)	
Concrete, cu. yds. (m³)				64.0 (48.9)
Reinforcing Bars, lbs. (kg)				8372 (3800)
Concrete Pad, sq. yds. (m²)				144 (120)
Improved Subgrade, sq. yds. (m²)				162 (135)