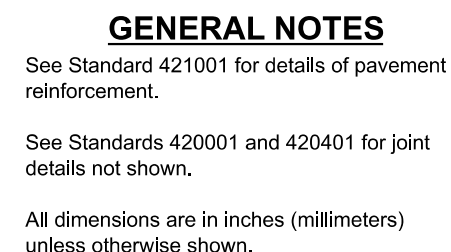


TRANSVERSE TERMINAL JOINT
SECTION B-B

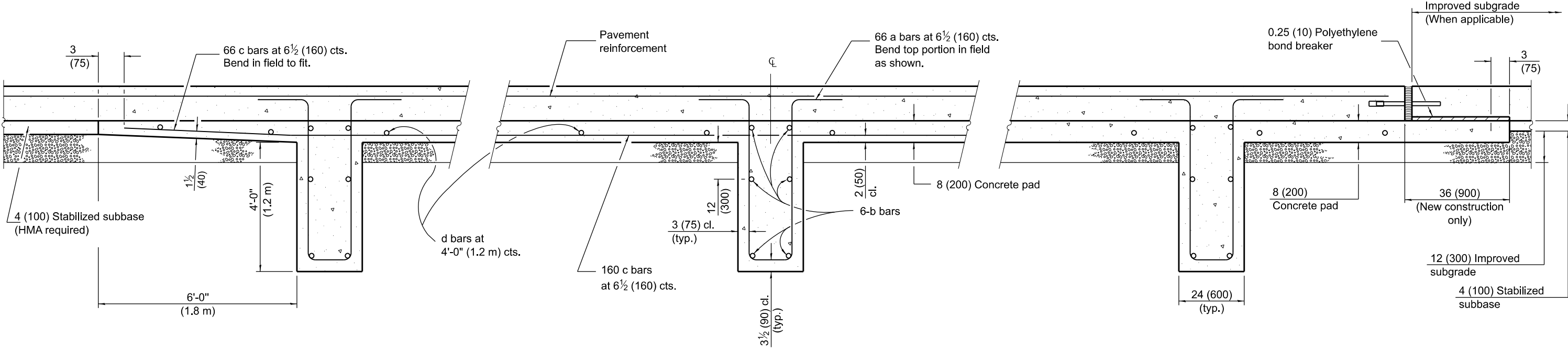


DATE	REVISIONS
1-1-18	Changed tie bar spacing
	to 36 (900).
1-1-08	Switched units to English (metric).
	Revised Lug Sys. Table.

36' (10.8 m)
CRC PAVEMENT
(WITH LUG SYSTEM)

(Sheet 1 of 2)

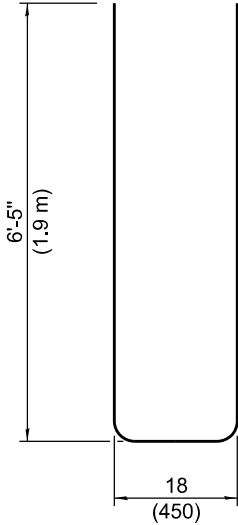
STANDARD 421206-07



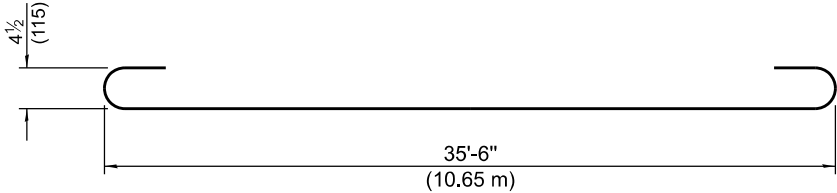
SECTION AT LUG W

SECTION AT LUG X

SECTION AT LUG Y



BAR a



BAR b

MATERIALS REQUIRED FOR (1) ONE LUG SYSTEM (Excluding Pavement Concrete and Pavement Reinforcement)				
Bar	No.	Size	Length	Shape
a	198	No. 8 (No. 25)	14'-0" (4.25 m)	
b	18	No. 5 (No. 16)	36'-9" (11.30 m)	
c	198	No. 5 (No. 16)	20'-0" (6.10 m)	
d	42	No. 4 (No. 13)	11'-9" (3.52 m)	
Concrete, cu. yds. (m³)			96.0 (73.4)	
Reinforcing Bars, lbs. (kg)			12,550 (5695)	
Concrete Pad, sq. yds. (m²)			216 (181)	
Improved Subgrade, sq. yds. (m²)			208 (174)	