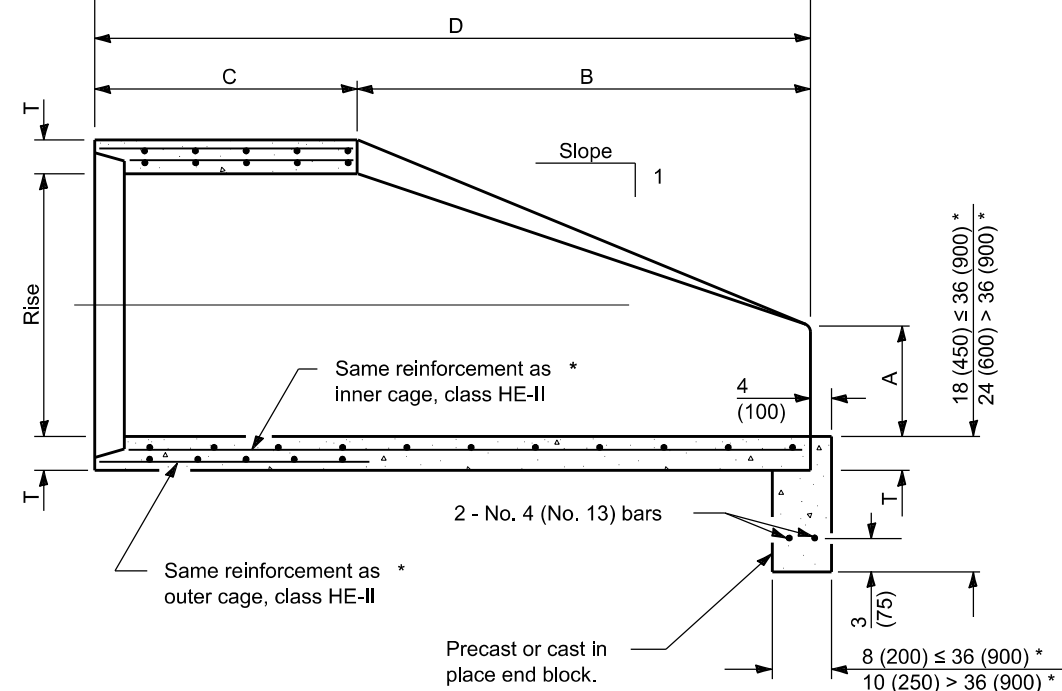


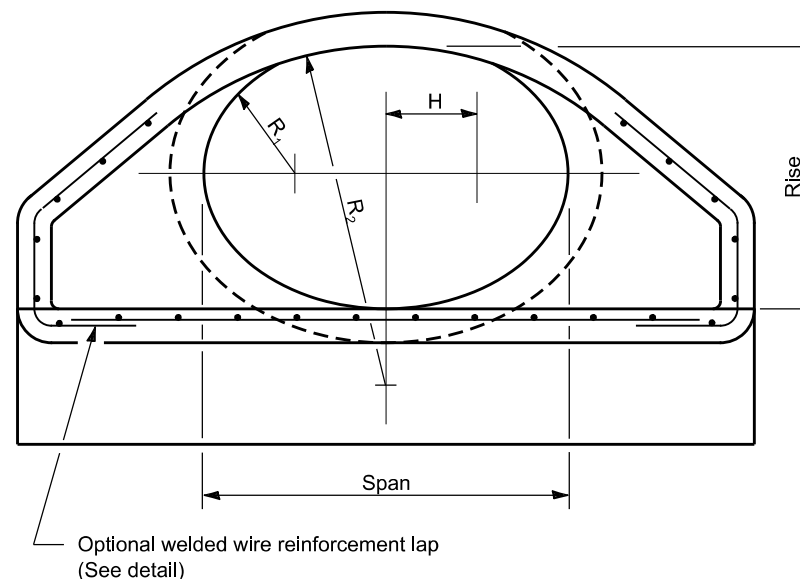
PLAN



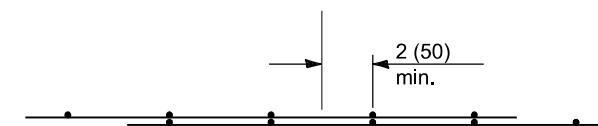
SECTION A-A

* Refers to the equivalent pipe diameter.

| SPAN | RISE | EQUIV. DIA. | WALL T | A | B | C | D | E | H | R | R ₁ | R ₂ | APPROX. SLOPE |
|--------------|--------------|--------------|----------------|-----------------|--------------------|--------------------|--------------------|--------------------|-----------------|-------------|-----------------|-------------------------|---------------|
| 23 (584) | 14 (356) | 18 (450) | 2 3/4 (70) | 8 (203) | 27 (686) | 3'-9" (1.143 m) | 6'-0" (1.829 m) | 36 (914) | 5 3/8 (137) | 6 (152) | 6 (152) | 20 (508) | 1:3.1 |
| 30 (762) | 19 (483) | 24 (600) | 3 1/4 (83) | 8 1/2 (216) | 39 (991) | 33 (838) | 6'-0" (1.829 m) | 4'-0" (1.219 m) | 6 7/8 (175) | 7 (178) | 8 1/4 (210) | 26 1/4 (667) | 1:2.8 |
| 34 (864) | 22 (559) | 27 (675) | 3 1/2 (89) | 9 (229) | 4'-0" (1.219 m) | 24 (610) | 6'-0" (1.829 m) | 4'-6" (1.372 m) | 7 3/4 (197) | 8 (203) | 9 1/4 (235) | 29 1/4 (743) | 1:2.9 |
| 38 (965) | 24 (610) | 30 (750) | 3 1/2 (95) | 9 1/2 (241) | 4'-6" (1.372 m) | 18 (475) | 6'-0" (1.829 m) | 5'-0" (1.524 m) | 8 5/8 (219) | 9 (229) | 10 1/4 (260) | 32 3/4 (832) | 1:2.9 |
| 45 (1143) | 29 (737) | 36 (900) | 4 1/2 (114) | 11 1/4 (286) | 5'-0" (1.524 m) | 36 (914) | 8'-0" (2.438 m) | 6'-0" (1.829 m) | 10 1/2 (267) | 12 (305) | 12 1/4 (311) | 39 1/4 (997) | 1:2.7 |
| 53 (1346) | 34 (864) | 42 (1050) | 5 (127) | 15 3/4 (400) | 5'-0" (1.524 m) | 36 (914) | 8'-0" (2.438 m) | 6'-6" (1.981 m) | 12 1/8 (308) | 13 (330) | 14 1/2 (368) | 3'-10" (1.168 m) | 1:2.6 |
| 60 (1524) | 38 (965) | 48 (1200) | 5 1/2 (140) | 21 (533) | 5'-0" (1.524 m) | 36 (914) | 8'-0" (2.438 m) | 7'-0" (2.134 m) | 13 1/2 (343) | 14 (356) | 16 1/2 (419) | 4'-3 1/2" (1.308 m) | 1:2.7 |
| 68 (1727) | 43 (1092) | 54 (1350) | 6 (152) | 26 (660) | 5'-0" (1.524 m) | 36 (914) | 8'-0" (2.438 m) | 7'-6" (2.286 m) | 15 1/4 (387) | 16 (406) | 18 3/4 (476) | 4'-10 1/2" (1.486 m) | 1:2.6 |
| 76 (1930) | 48 (1219) | 60 (1500) | 6 1/2 (165) | 31 (787) | 5'-0" (1.524 m) | 36 (914) | 8'-0" (2.438 m) | 8'-0" (2.439 m) | 17 (432) | 18 (457) | 20 3/4 (527) | 5'-5" (1.651 m) | 1:2.6 |



END VIEW



OPTIONAL WELDED WIRE REINFORCEMENT LAP

GENERAL NOTES

All slope ratios are expressed as units of vertical displacement to units of horizontal displacement (V:H).

All dimensions are in inches (millimeters) unless otherwise shown.

| DATE | REVISIONS |
|--------|---|
| 4-1-16 | Changed terminology to 'welded wire reinforcement'. |
| | Corrected min. lap dimension. |
| 1-1-09 | Switched units to English (metric). |
| | |
| | |

PRECAST REINFORCED CONCRETE ELLIPTICAL FLARED END SECTION

STANDARD 542306-03

Illinois Department of Transportation

APPROVED *[Signature]* April 1, 2016
ENGINEER OF BRIDGES AND STRUCTURES

APPROVED *[Signature]* April 1, 2016
ENGINEER OF DESIGN AND ENVIRONMENT

ISSUED 1-1-97