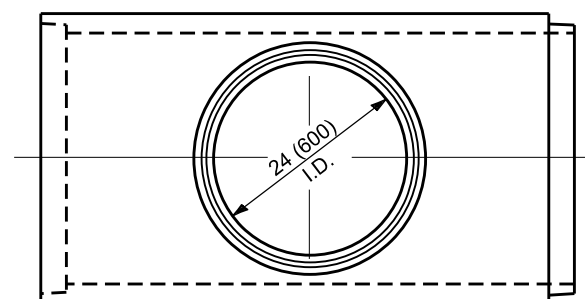
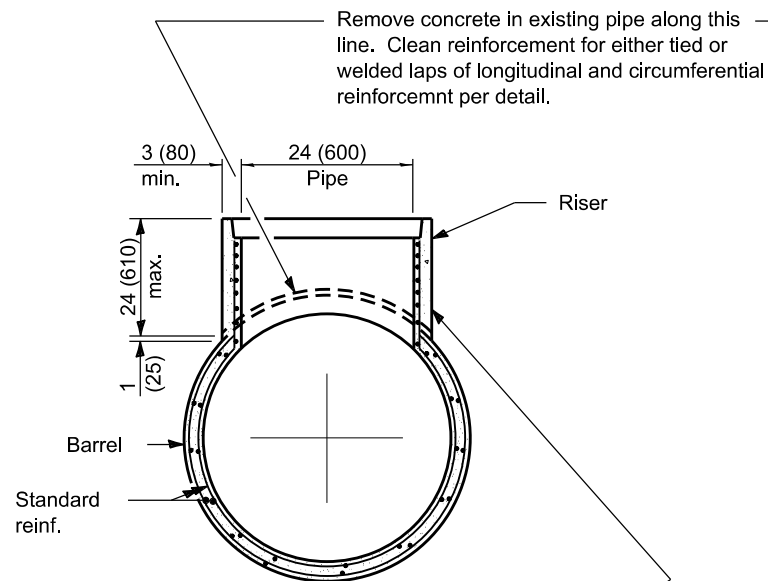


**LONGITUDINAL SECTION**

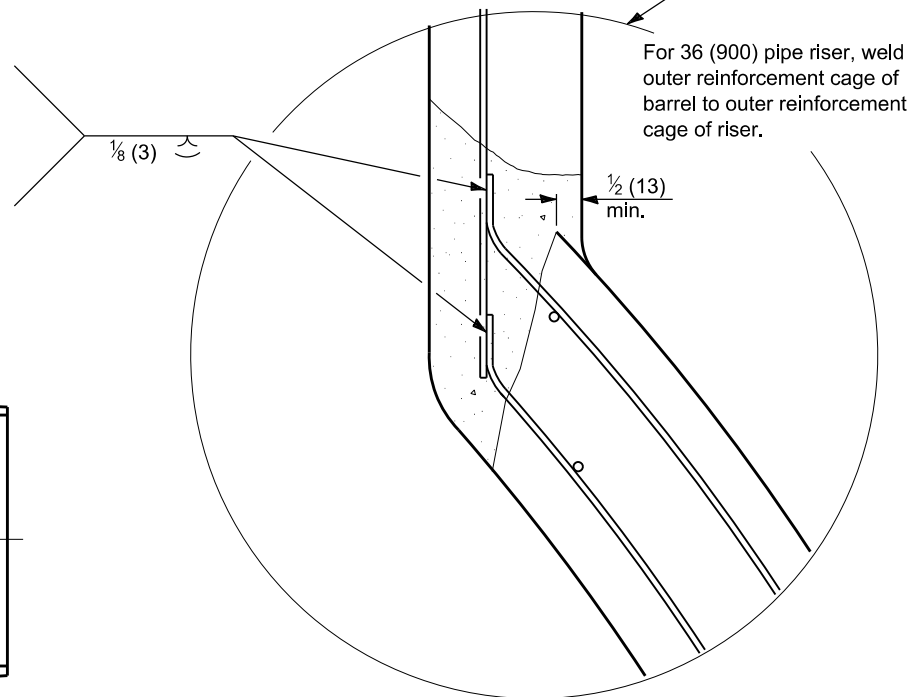
For wire W12 thru W2 (10,008 thru 7,188), length of weld shall be  $\frac{3}{4}$  (20) min.  
For wire W5.5 thru W2.5 (6,655 thru 4,496), length of weld shall be  $\frac{3}{8}$  (10) min.  
Other wire gauges shall be tied per detail.



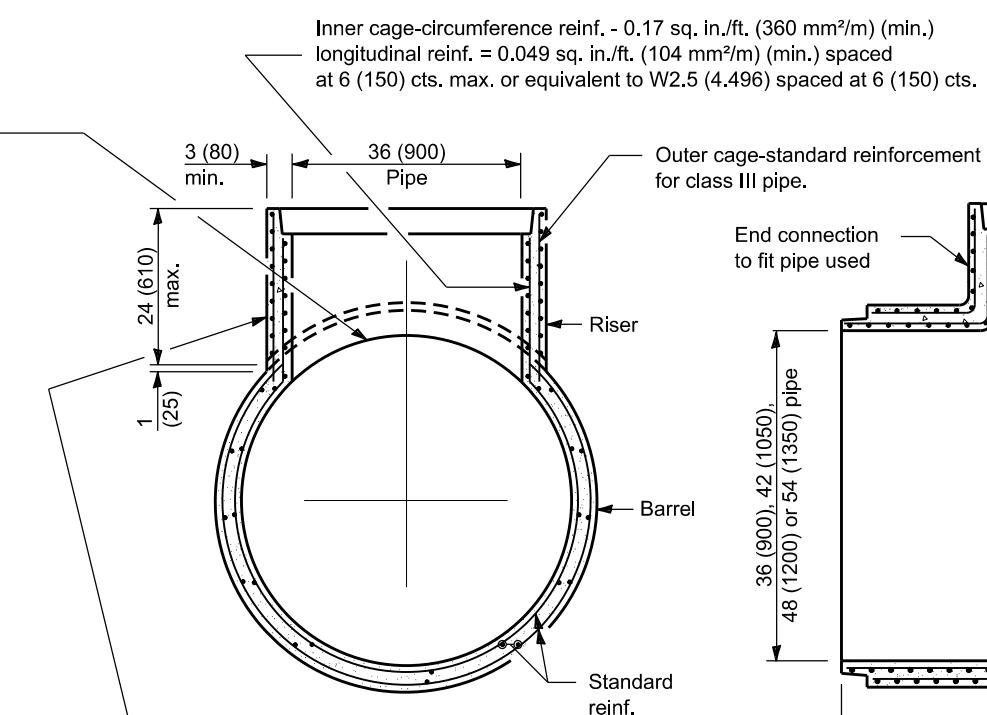
**PLAN  
TEE WITH 24 (600) RISER**



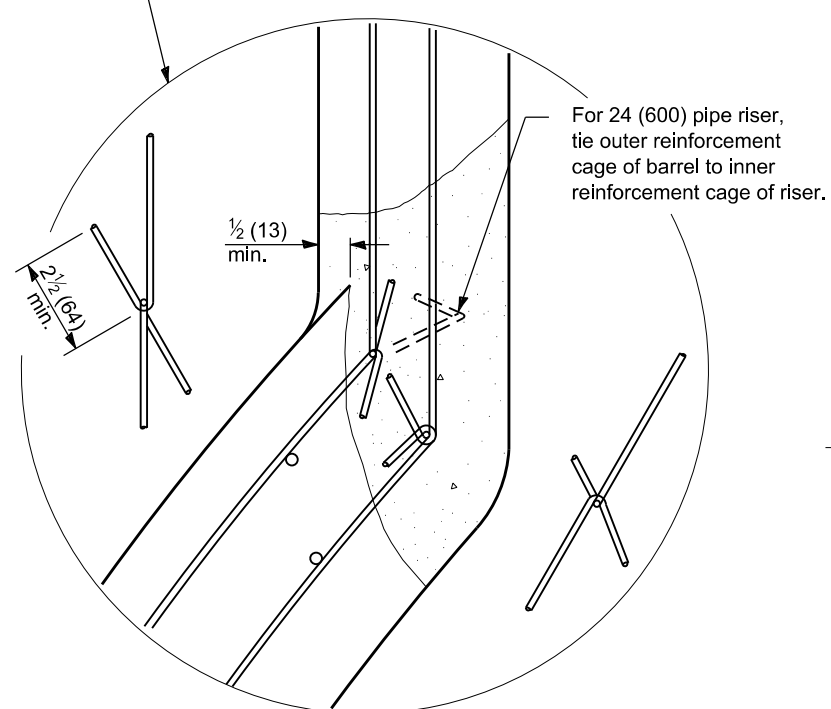
**TRANSVERSE SECTION**



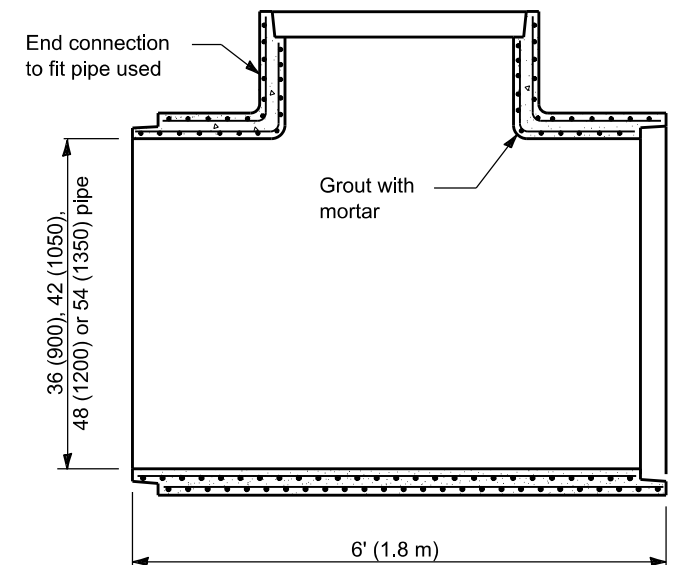
**WELDED LAP**



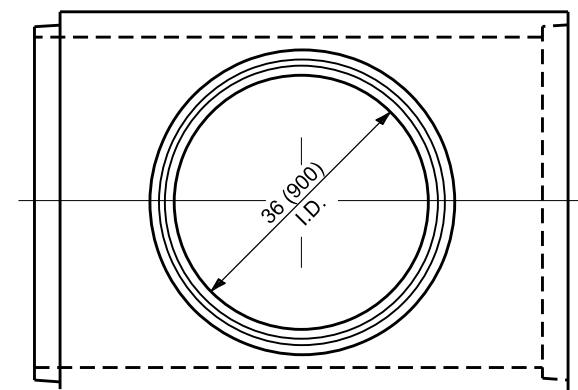
**TRANSVERSE SECTION**



**TIED LAP**



**LONGITUDINAL SECTION**



**PLAN  
TEE WITH 36 (900) RISER**

All dimensions are in inches (millimeters) unless otherwise shown.

DATE	REVISIONS
1-1-11	Corrected weld symbol on Welded Lap detail.
1-1-09	Switched units to English (metric).

**REINFORCED CONCRETE  
PIPE TEE**

**STANDARD 542606-02**