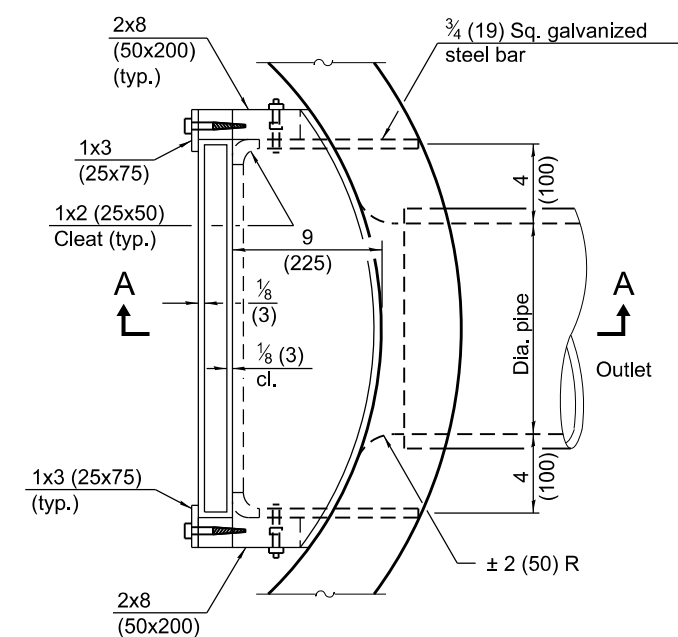
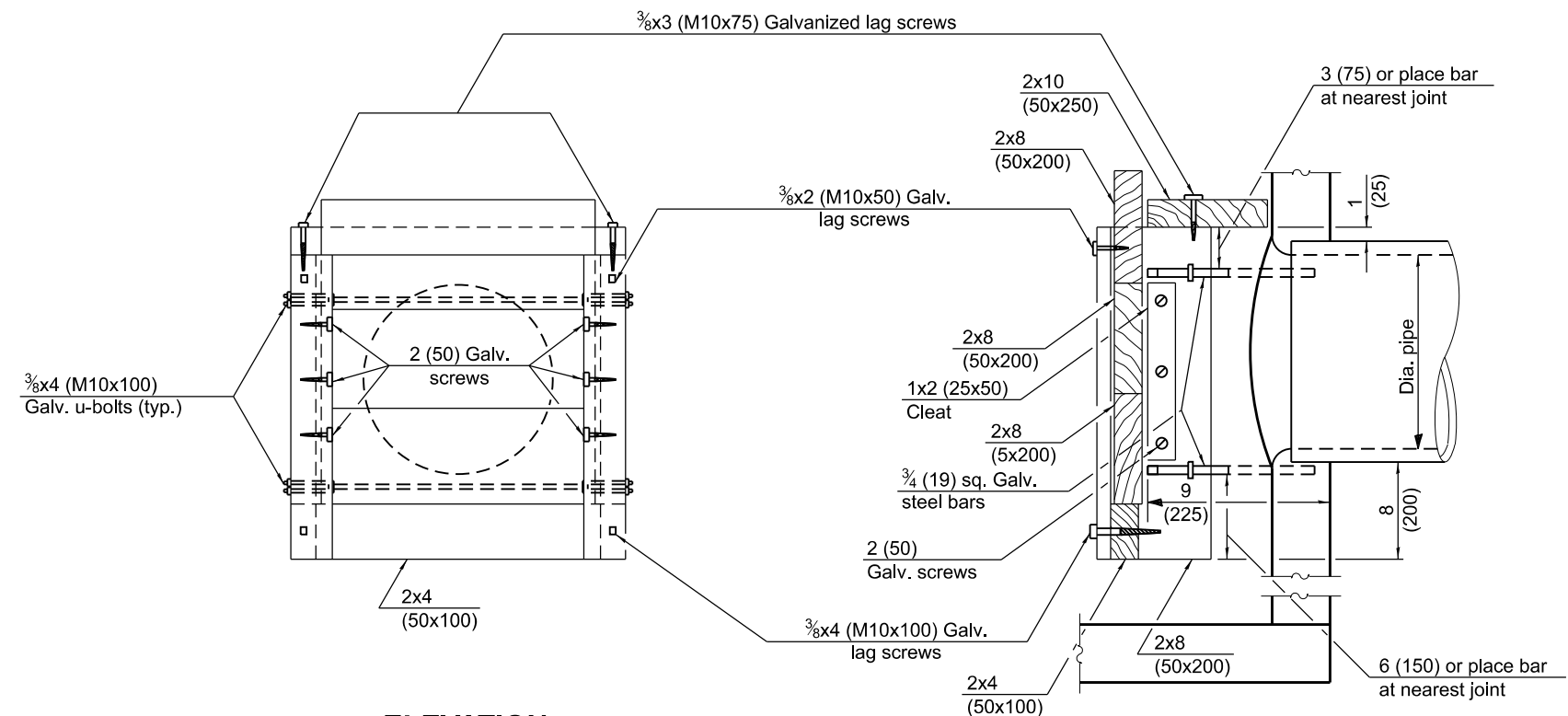


ALTERNATE MATERIALS FOR WALLS	D	C*	T (min.)
Concrete Masonry Unit	36 (900) 4'-0" (1.20 m)	15 (380) 30 (760)	5 (125) 5 (125)
Brick Masonry	36 (900) 4'-0" (1.20 m)	15 (380) 30 (760)	8 (200) 8 (200)
Precast Reinforced Concrete Section	36 (900) 4'-0" (1.20 m)	15 (380) 30 (760)	3 (75) 4 (100)
Cast-in-Place Concrete	36 (900) 4'-0" (1.20 m)	15 (380) 30 (760)	6 (150) 6 (150)

* For precast reinforced concrete sections, dimension "C" may vary from the dimension given to plus 6 (150).



GENERAL NOTES


Bottom slabs shall be reinforced with a minimum of 0.20 sq. in./ft. (420 sq. mm/m) in both directions with a maximum spacing of 12 (300).

Bottom slabs may be connected to the riser as determined by the fabricator; however, only a single row of reinforcement around the perimeter may be utilized.

See Standard 602701 for details of steps.

See Standard 602601 for optional precast reinforced concrete flat slab top.

All dimensions are in inches (millimeters)
unless otherwise shown.

	Illinois Department of Transportation	
APPROVED _____	January 1, _____ 2011 <i>Michael Brand</i>	ISSUED 1-1-97
ENGINEER OF POLICY AND PROCEDURES		
APPROVED _____	January 1, _____ 2011 <i>Scott Smith</i>	
ENGINEER OF DESIGN AND ENVIRONMENT		

DATE	REVISIONS	<div> <div>CATCH BASIN</div> <div>TYPE D</div> </div>
1-1-11	Detailed reinforcement in slabs.	
	Revised general notes.	
		<div>STANDARD 602016-02</div>
1-1-09	Switched units to English (metric).	