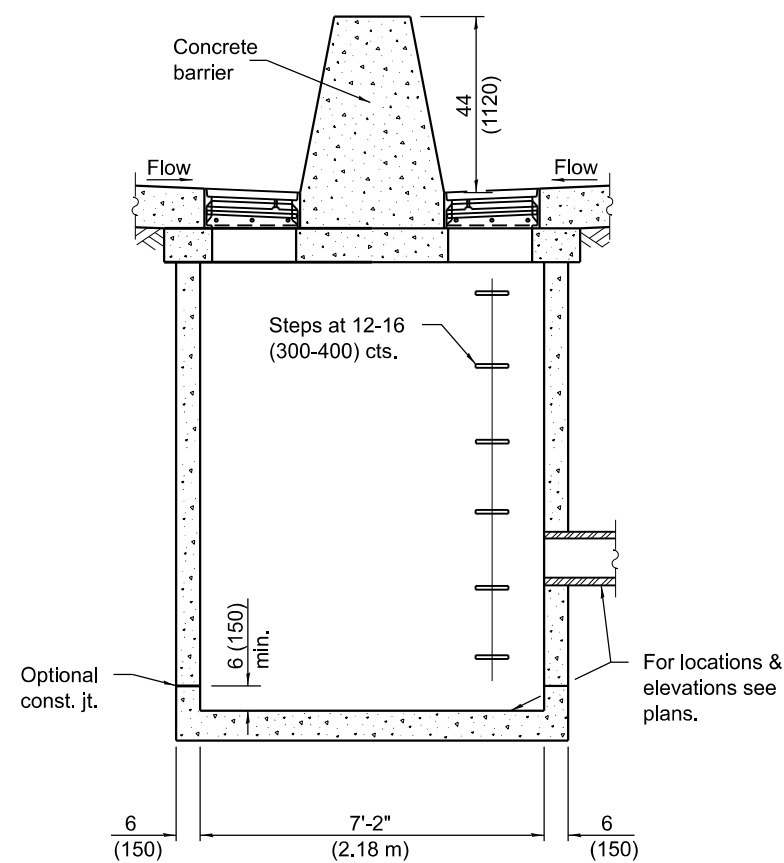
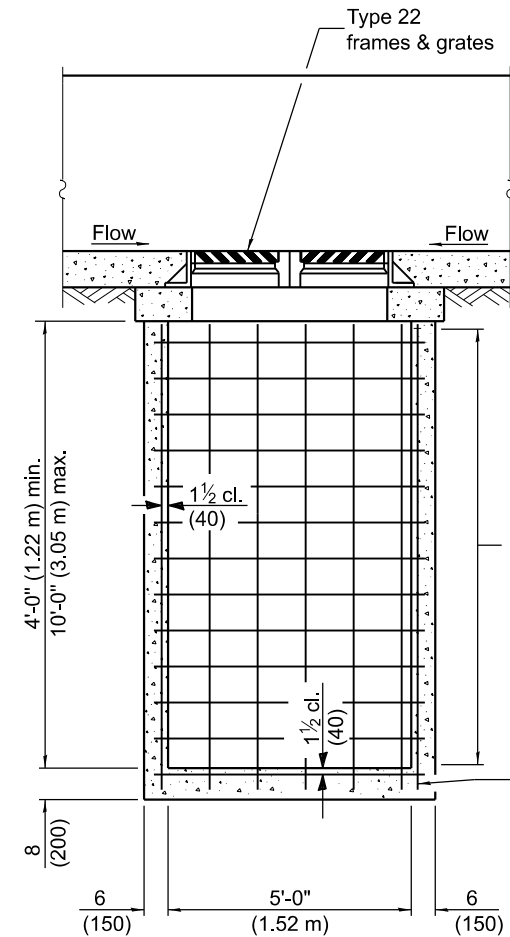


FRONT ELEVATION - TYPE 4



SIDE ELEVATION - TYPE 4 & 5



FRONT ELEVATION - TYPE 5

For 4'-0" (1.22 m) to 8'-0" (2.44 m) use
No. 5 (No. 16) bars at 8 (200) cts. (all sides).
Over 8'-0" (2.44 m) to 10'-0" use
No. 5 (No. 16) bars at 7 (175) cts. (all sides).

No. 5 (No. 16) Bars at
12 (300) cts. (all sides)

GENERAL NOTES

These structures are for use with concrete barrier, double face, 44 (1120) height (Standard 637006).

The reinforcement shown in the front elevation of the Type 5 is typical for both elevations of all types.

See Standard 602701 for details of steps.

Exposed edges shall be beveled $\frac{3}{4}$ (19).

All dimensions are in inches (millimeters) unless otherwise shown.

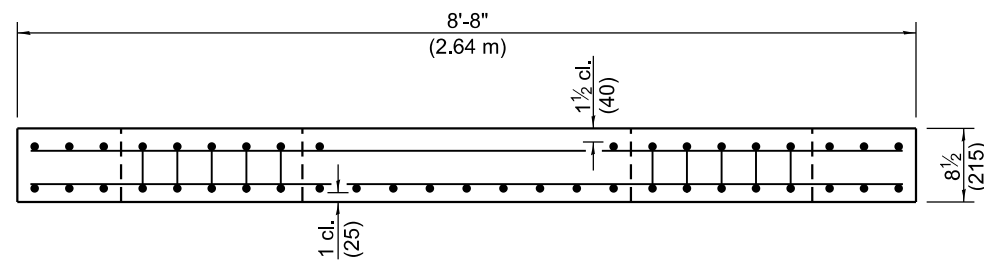
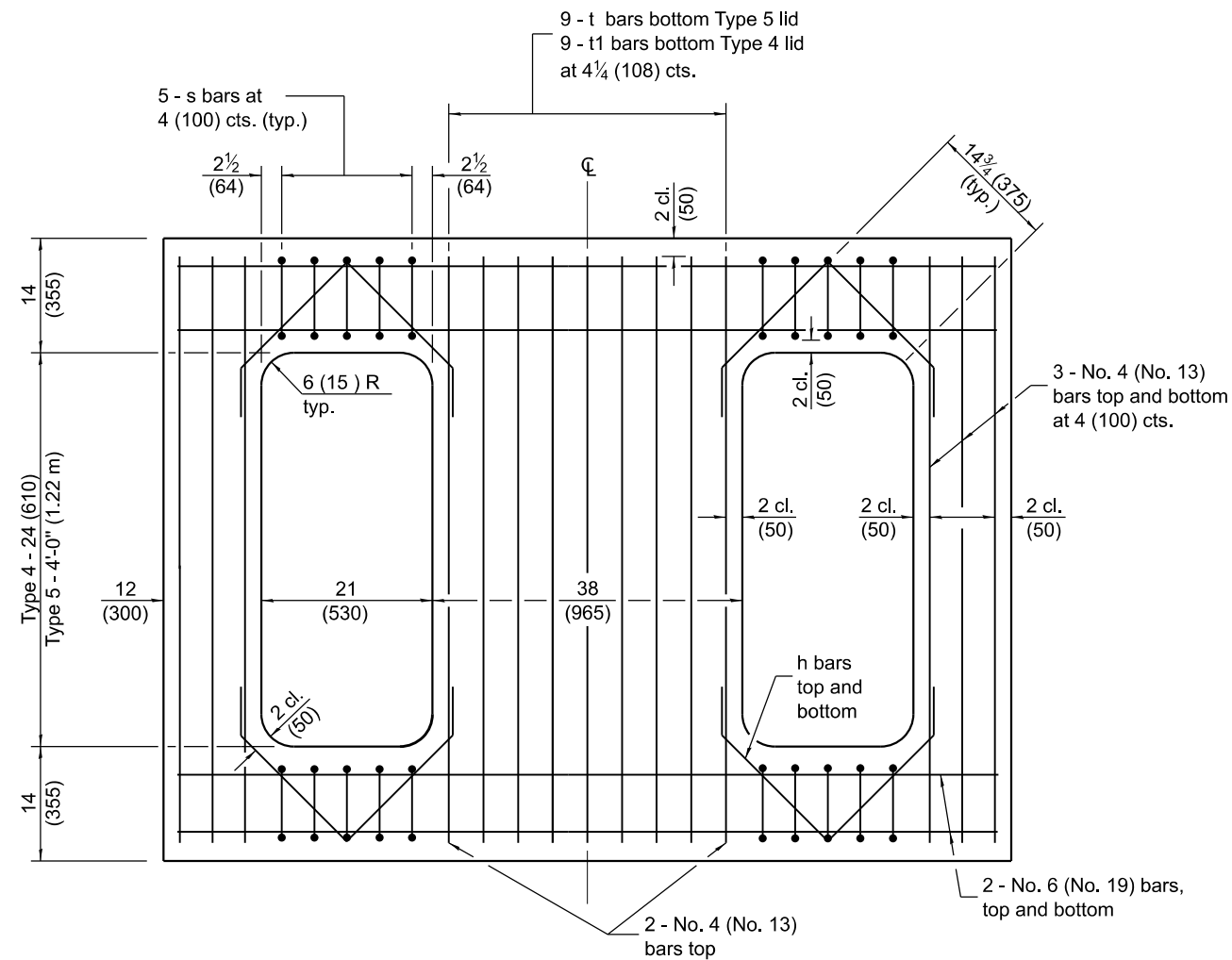
Illinois Department of Transportation	
APPROVED January 1, 2021	ISSUED 4-1-04
<i>Michael B. ...</i>	
ENGINEER OF POLICY AND PROCEDURES	
APPROVED January 1, 2021	
<i>J. ...</i>	
ENGINEER OF DESIGN AND ENVIRONMENT	

DATE	REVISIONS
1-1-21	Revised openings in lid to fit the 36 (915) wide of the revised concrete median barrier.
1-1-19	Deleted Type 6 and revised Types 4 and 5 to fit with 44 (1120) height, constant slope barrier.

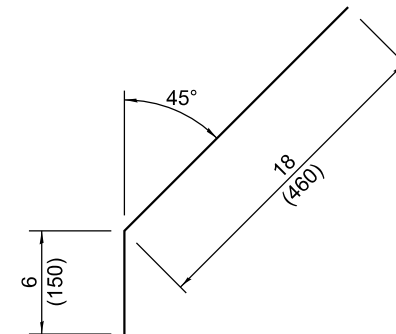
DRAINAGE STRUCTURES TYPES 4 & 5

(Sheet 1 of 2)

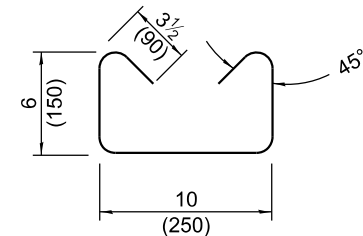
STANDARD 602106-03



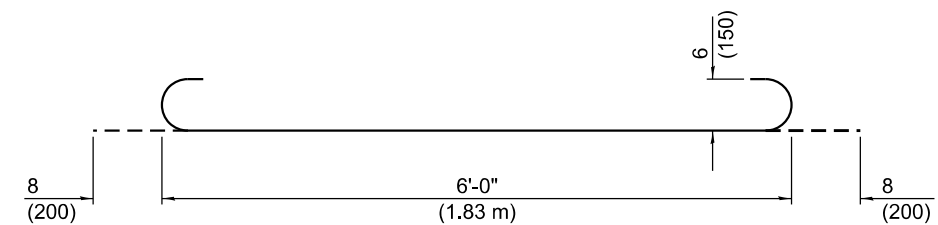
REINFORCED LID - TYPE 4 & 5



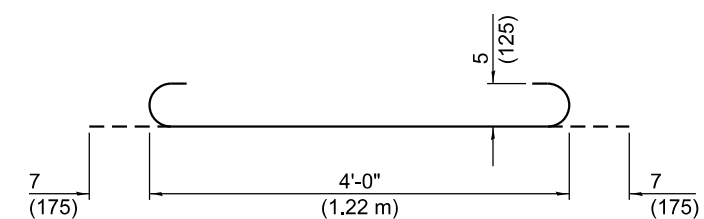
No. 4 (No. 13) Bar h



No. 3 (No. 10) Bar s



No. 6 (No. 19) Bar t



No. 5 (No. 16) Bar t₁