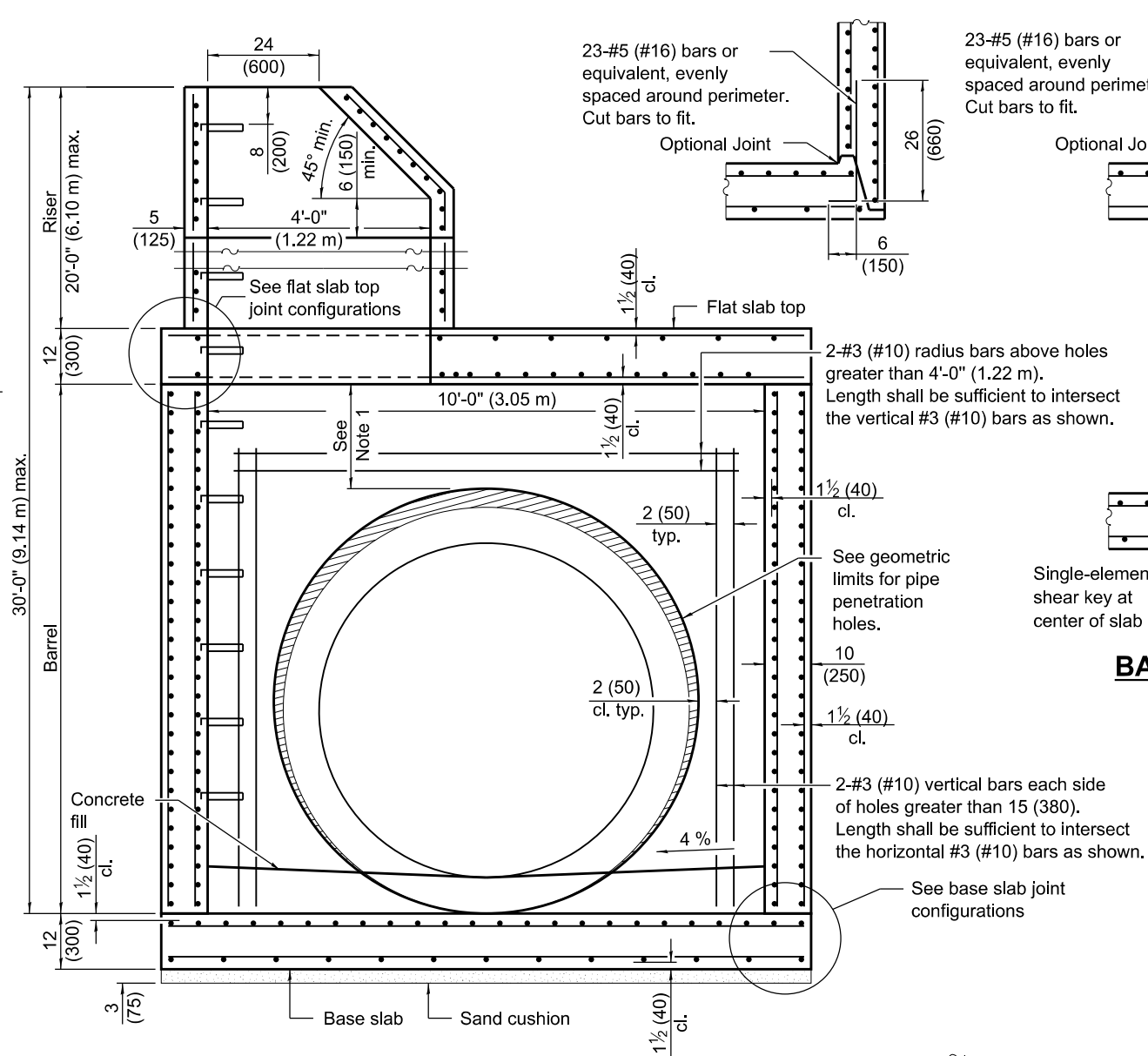
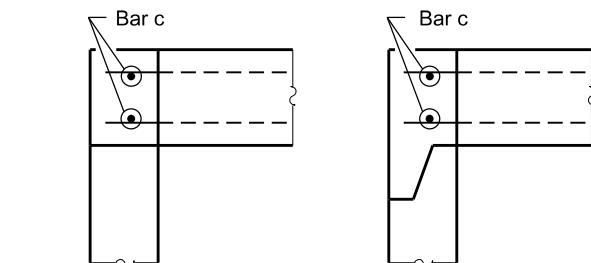


SECTION PARALLEL TO PIPE
(Without conical top riser)



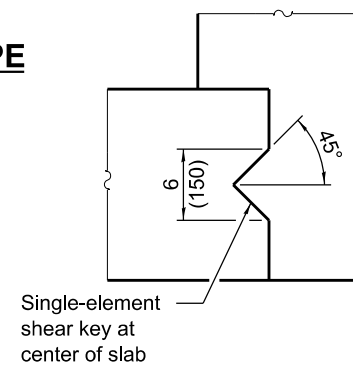
SECTION PERPENDICULAR TO PIPE
(With conical top riser)



FLAT SLAB TOP JOINT CONFIGURATIONS
(Shown at access hole)

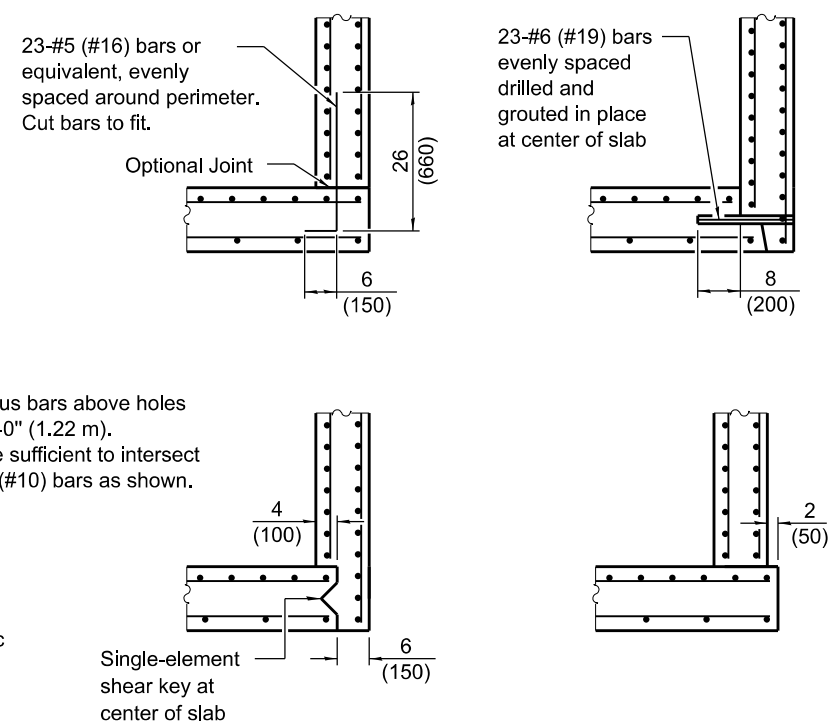
GEOMETRIC LIMITS FOR PIPE PENETRATION HOLES

- Note 1: A minimum of 12 (300) of monolithic reinforced concrete shall be maintained above pipe penetration holes > 4'-0" (1.22 m).
- Note 2: A minimum 12 (300) inside arc length of reinforced concrete shall be maintained between pipe penetration holes > 15 (380).
- Note 3: A maximum of 60 percent of the inside perimeter of the reinforced concrete manhole walls may be removed.
- Note 4: Horizontal joints that intersect pipe penetration holes > 15 (380) shall have one joint splice for every location around the perimeter of the joint where the inside arc length between pipe penetration holes is < 24 (600). See joint splice detail.
- Note 5: The recommended pipe penetration hole is equal to the O.D. of the pipe plus 4 (100).
- Note 6: Only pipe penetration holes ≤ 15 (380) are allowed in riser sections.



SHEAR KEY GEOMETRY
(Reinforcement not shown for clarity)

BASE SLAB JOINT CONFIGURATIONS



GENERAL NOTES

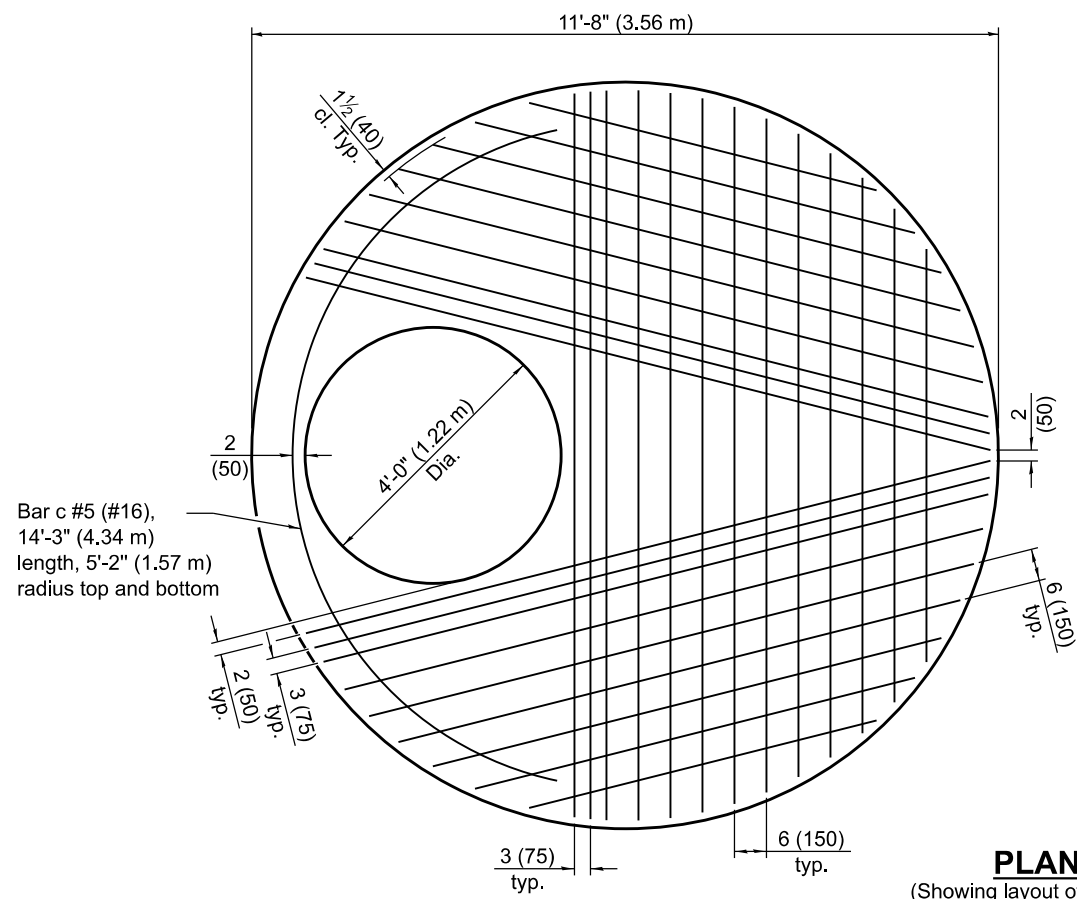
- Pipe holes shall be formed to facilitate proper placement of hole reinforcement.
- The manufacturer shall ensure that all precast manhole sections are additionally reinforced where required to resist damage from handling, shipping and installation stresses.
- Lifting holes shall be located in the sections as per the manufacturer's recommendations.
- See Standard 602701 for details of manhole steps.
- All dimensions are in inches (millimeters) unless otherwise noted.

DATE	REVISIONS
1-1-21	Revised Note 1.
3-1-19	Moved wall reinforcement of
	4'-0" (1.22 m) riser from inside
	face to middle.

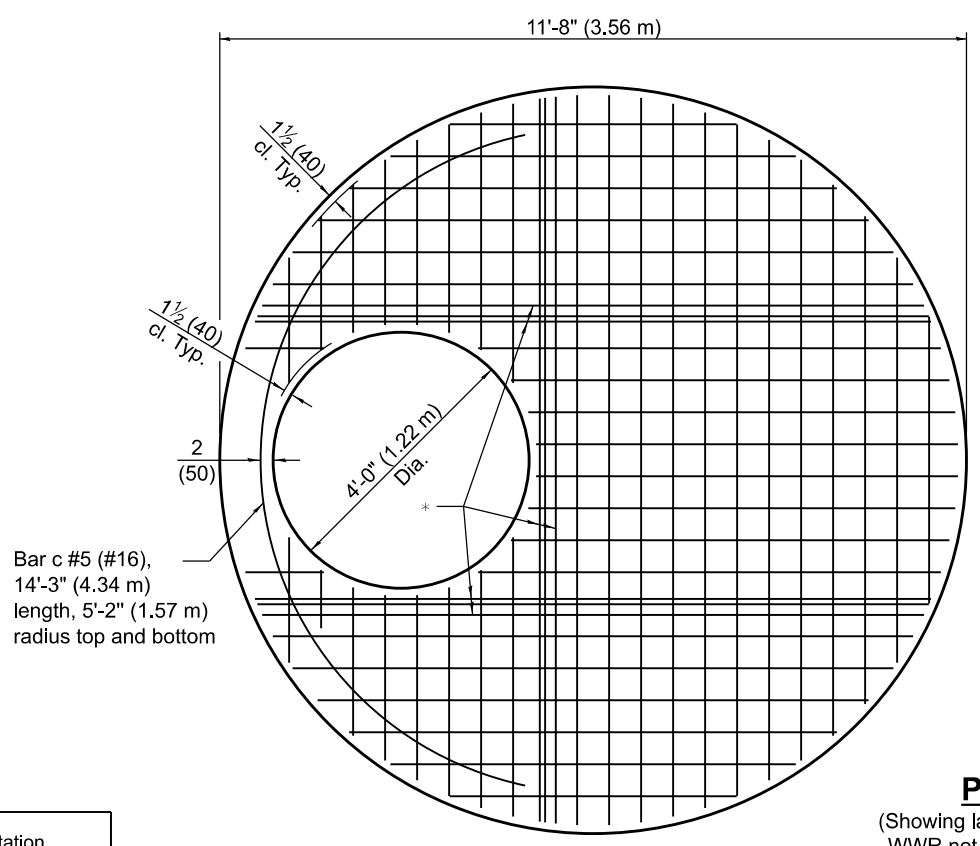
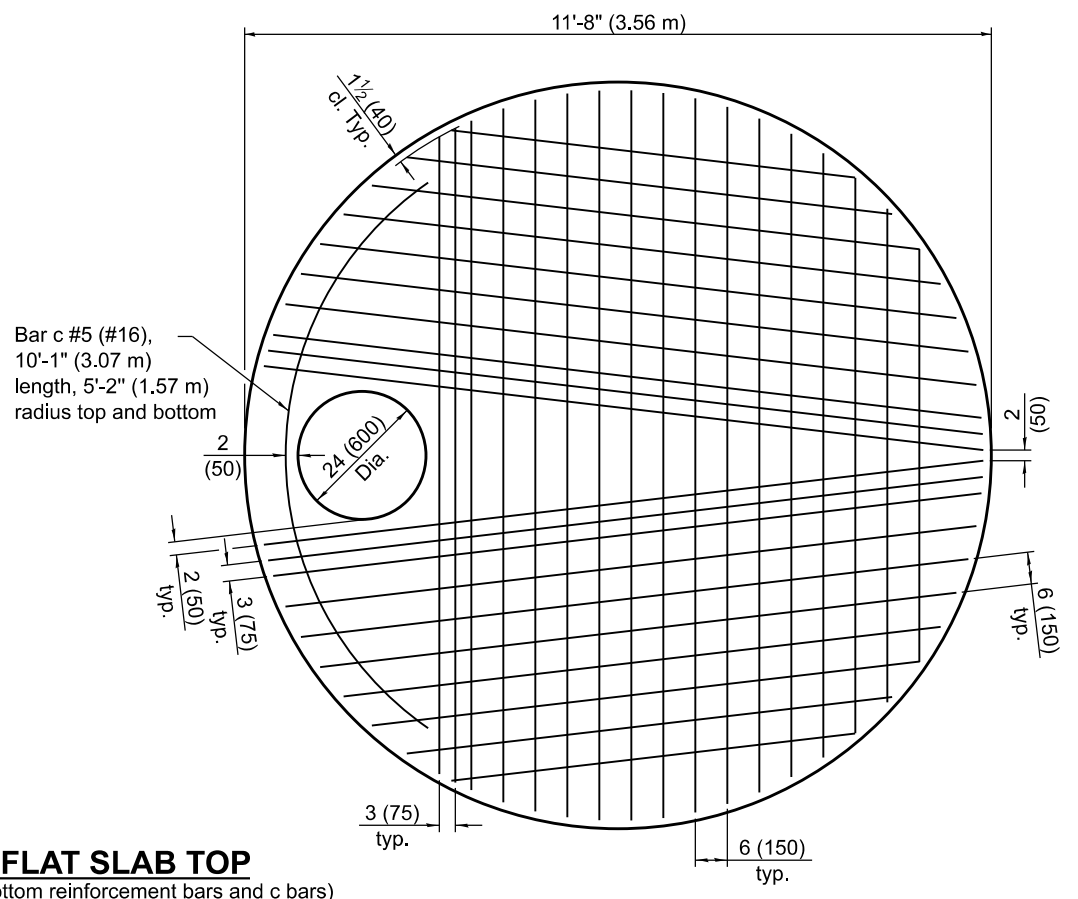
PRECAST MANHOLE TYPE A
10' (3.05 m) DIAMETER

(Sheet 1 of 3)

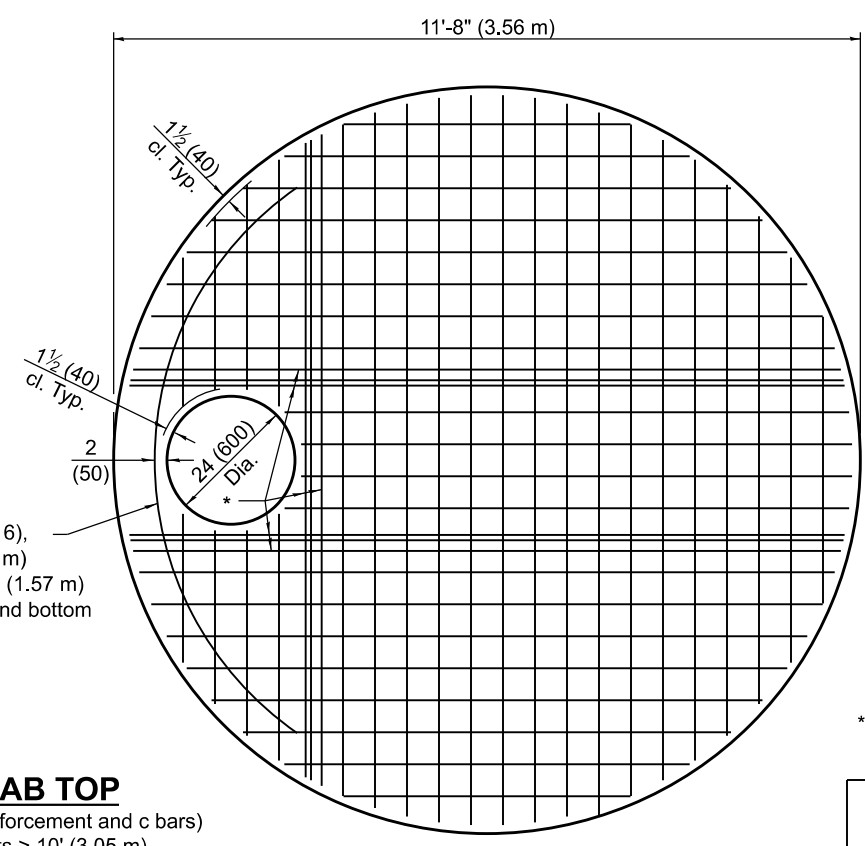
STANDARD 602426-03



PLAN - FLAT SLAB TOP
(Showing layout of bottom reinforcement bars and c bars)



PLAN - FLAT SLAB TOP
(Showing layout of welded wire reinforcement and c bars)
WWR not permitted for riser heights > 10' (3.05 m).

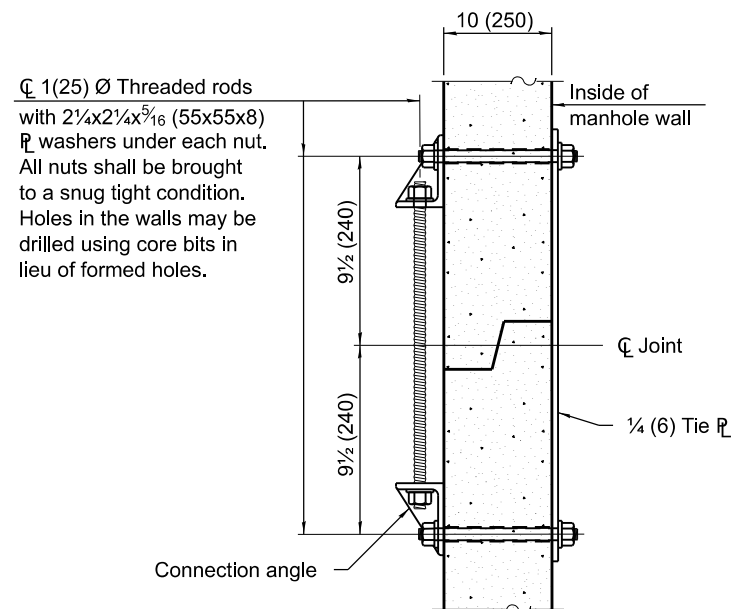


* #6 (#19) bars bottom. Bundle first bar with closest WWR bar to the opening and place second bar ±3 (75) away.

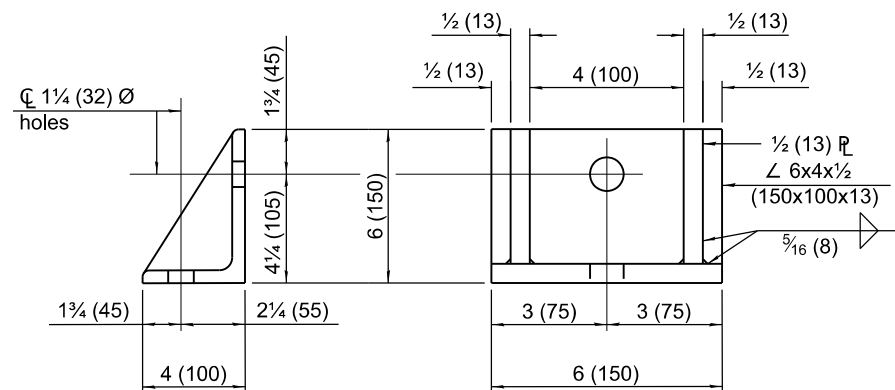
PRECAST MANHOLE TYPE A
10' (3.05 m) DIAMETER

(Sheet 2 of 3)

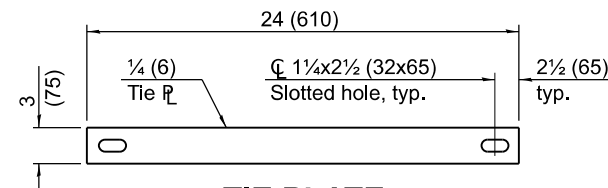
STANDARD 602426-03



JOINT SPLICE



CONNECTION ANGLE



TIE PLATE

FLAT SLAB TOP REINFORCEMENT

Location	Riser Height (RH)	WWR (each direction)		Rebar (each direction except as noted)		
		A _s (min.)	Spacing (max.)	A _s (min.)	Spacing (max.)	Bar Size
Top Mat	All	0.11 sq. in./ft. (233 sq. mm/m)	18 (450)	0.11 sq. in./ft. (233 sq. mm/m)	18 (450)	#3 or #4 (#10) (#13)
Bottom Mat	RH ≤ 10 ft. (3.05 m)	** 0.88 sq. in./ft. (1863 sq. mm/m)	6 (150)	See plan view for rebar orientation and spacing and this table for bar size		#6 (#19)
	RH > 10 ft. (3.05 m)	WWR not permitted				#8 (#25)

** Only one layer of WWR permitted to avoid congestion.

WALL REINFORCEMENT

Location	Orientation	WWR or Rebar	
		A_s (min.)	Spacing (max.)
4 ft. (1.22 m) \bar{O} Riser	Circumferential	0.12 sq. in./ft. (254 sq. mm/m)	6 (150)
	Vertical	0.045 sq. in./ft. (95 sq. mm/m)	8 (200)
10 ft. (3.05 m) \bar{O} Barrel Inside Mat	Circumferential	0.30 sq. in./ft. (635 sq. mm/m)	6 (150)
	Vertical	0.045 sq. in./ft. (95 sq. mm/m)	8 (200)
10 ft. (3.05 m) \bar{O} Barrel Outside Mat	Circumferential	0.11 sq. in./ft. (233 sq. mm/m)	6 (150)
	Vertical	0.045 sq. in./ft. (95 sq. mm/m)	8 (200)

BASE SLAB REINFORCEMENT

Location	Riser Height (RH)/ Total Height (TH)	WWR or Rebar (each direction)	
		A_s (min.)	Spacing (max.)
Top Mat	RH \leq 10 ft. (3.05 m) & TH \leq 20 ft. (6.10 m)	0.48 sq. in./ft. (889 sq. mm/m)	6 (150)
	RH > 10 ft. (3.05 m) or TH > 20 ft. (6.10 m)	0.78 sq. in./ft. (1651 sq. mm/m)	6 (150)
Bottom Mat	All	0.11 sq. in./ft. (233 sq. mm/m)	18 (450)

PRECAST MANHOLE TYPE A
10' (3.05 m) DIAMETER

(Sheet 3 of 3)

STANDARD 602426-03