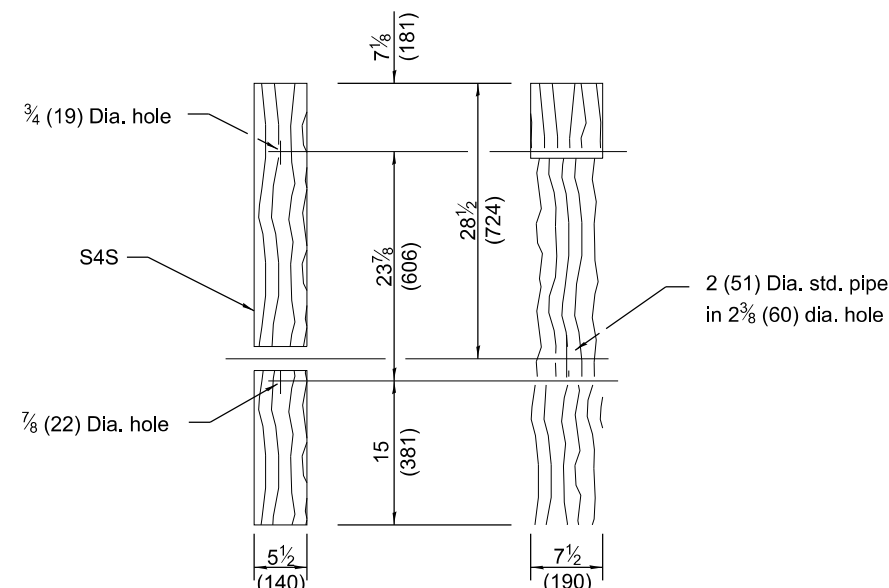
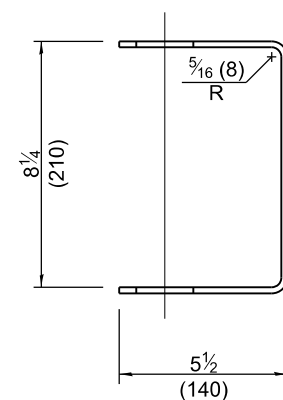


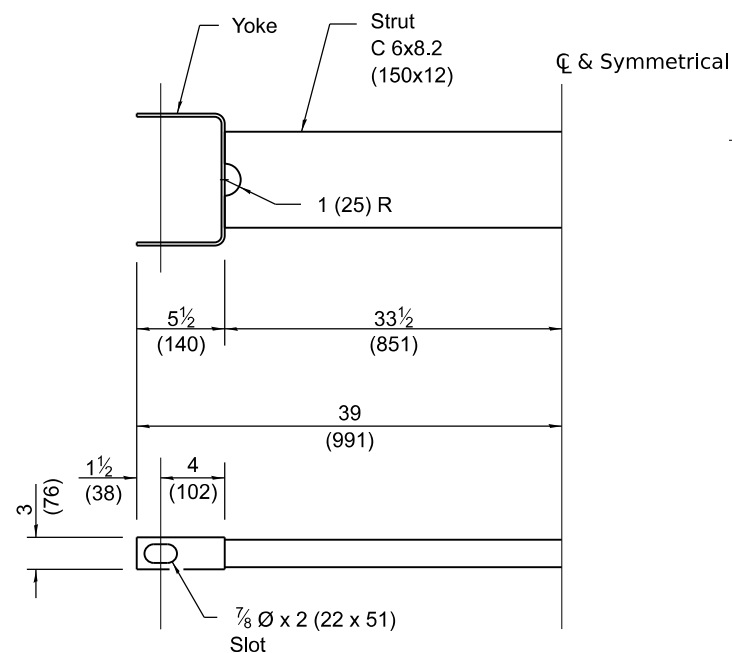
BEARING PLATE K



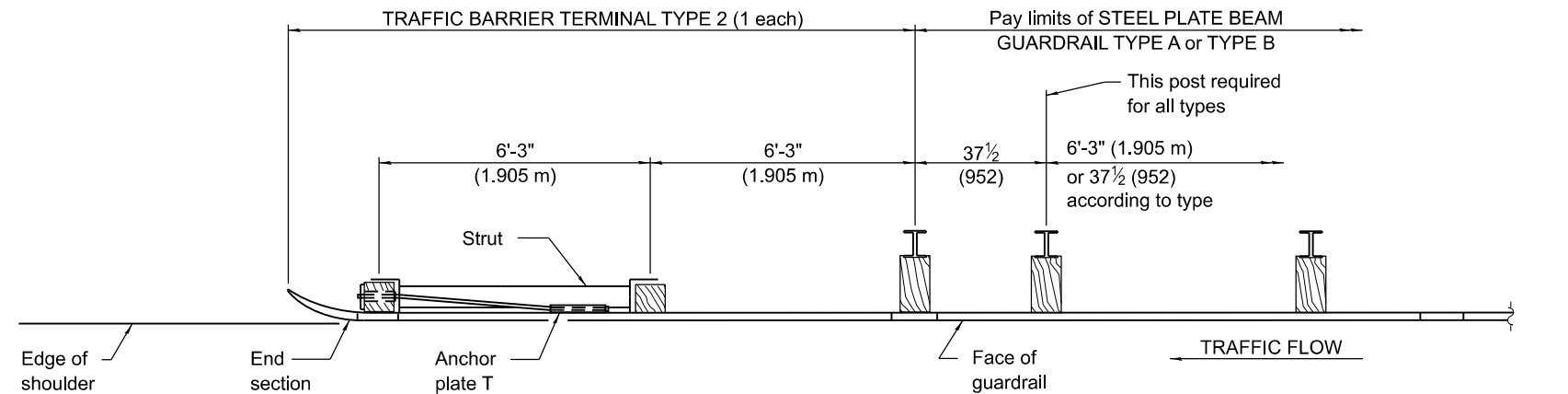
FRONT
WOOD POST
SIDE



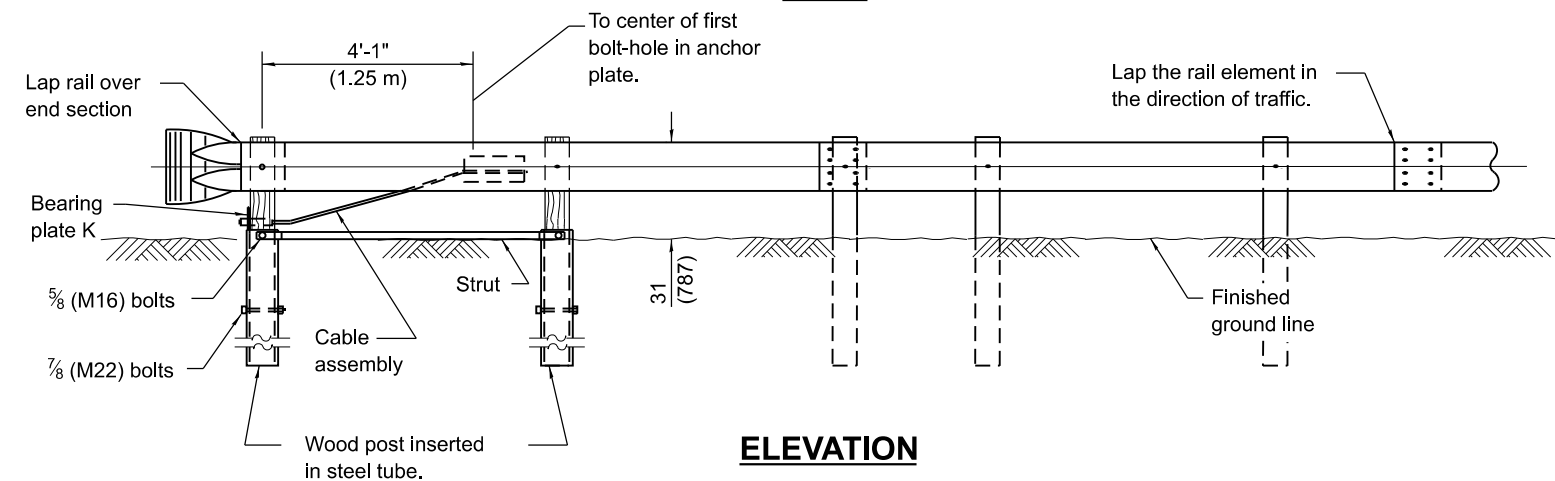
YOKE
3/16 (5) thick steel



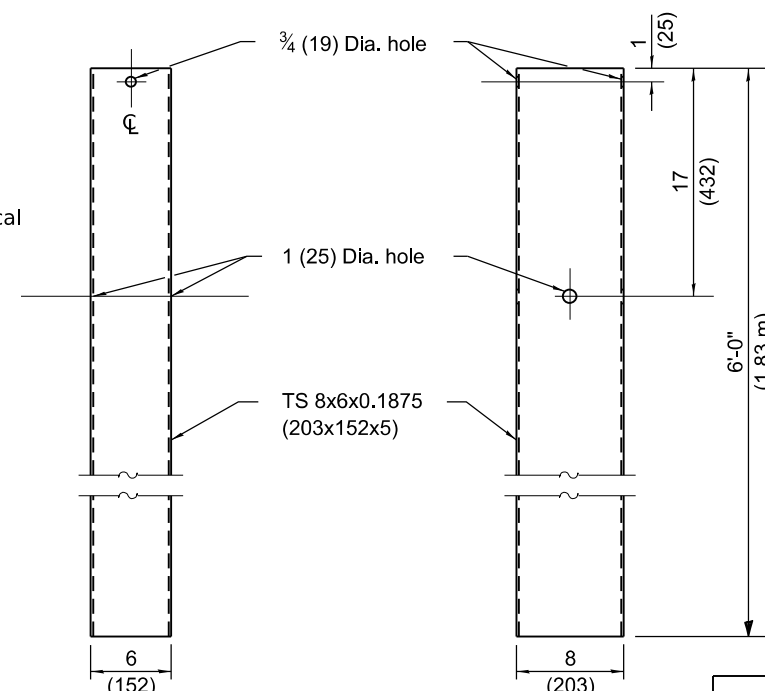
CABLE STRUT



PLAN



ELEVATION



FRONT

SIDE

STEEL TUBE

GENERAL NOTES

See Standard 630001 for details of guardrail not shown.

The bearing plate K shall be held in position by two eight penny nails driven into the post and bent over the top of the plate.

All dimensions are in inches (millimeters) unless otherwise shown.

DATE	REVISIONS
1-1-17	Revised wood post length and hole spacing.
1-1-13	Corrected metric dimension for BEARING PLATE K. Changed pipe dia. in wood post.

**TRAFFIC BARRIER
TERMINAL, TYPE 2**

STANDARD 631011-10