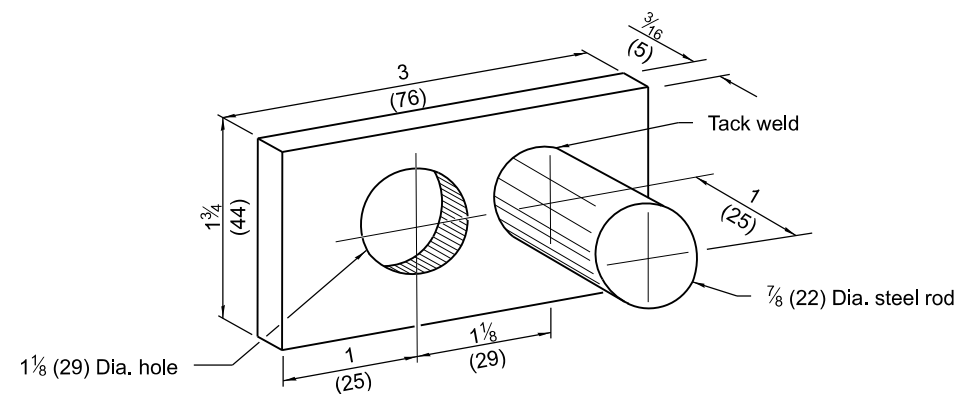
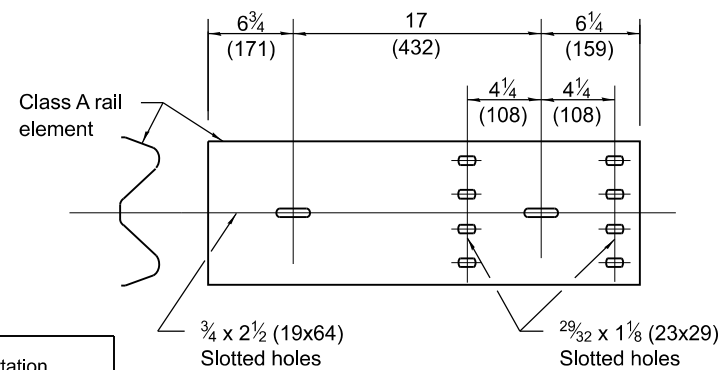


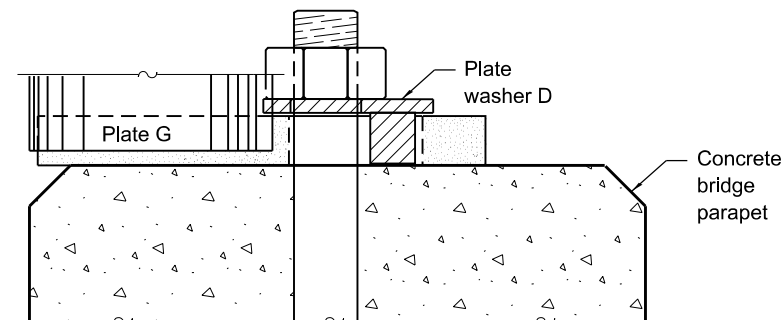
**TYPE 5 - CONCRETE BRIDGE PARAPET**



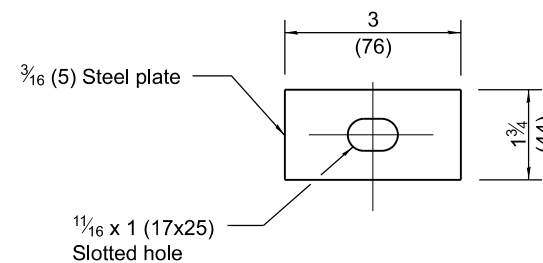
**PLATE WASHER D**



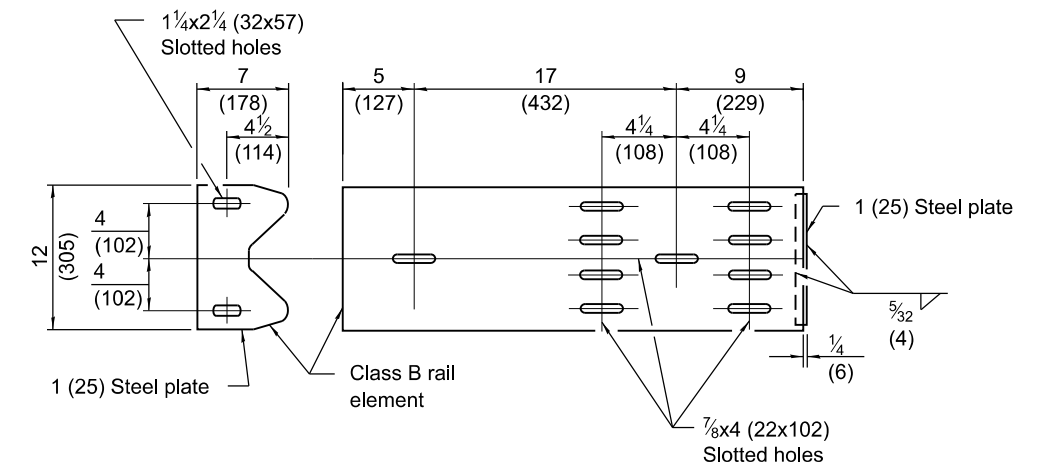
**PLATE E**



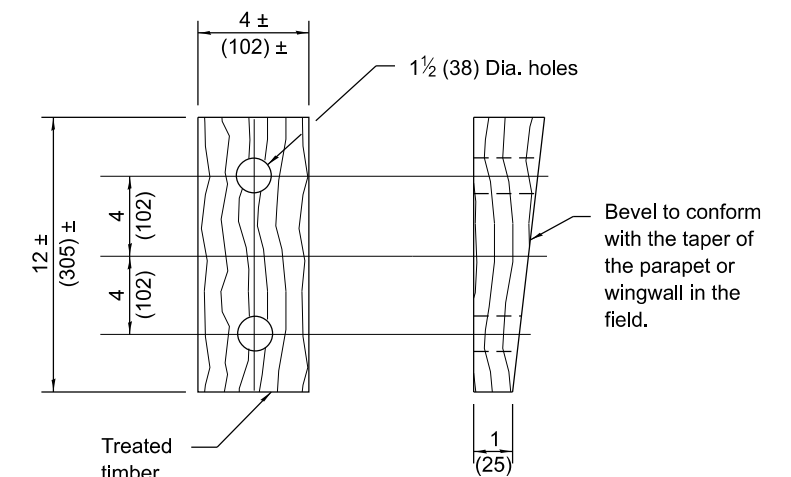
**PLACEMENT OF PLATE WASHER D (PLAN)**



**PLATE WASHER F**



**PLATE G**



**WEDGE M**

**GENERAL NOTES**

Install plate washer D so the 1 (25) projection fills the remainder of the slotted holes in the 1 (25) end plate on plate G after the 1 (M24) dia. bolts are in place.

\* When an expansion joint exists below the connector, bolts shall be provided with a locknut or double nuts and shall be tightened only to a point that will allow plate G to be free to move.

See Standard 630001 for details of guardrail not shown.

All dimensions are in inches (millimeters) unless otherwise shown.

Illinois Department of Transportation

APPROVED January 1, 2015  
Michael Brand  
ENGINEER OF POLICY AND PROCEDURES

APPROVED January 1, 2015  
ENGINEER OF DESIGN AND ENVIRONMENT

ISSUED 1-1-97

DATE	REVISIONS
1-1-15	Revised post spacing dimensions on elevation.
1-1-09	Switched units to English (metric).

**TRAFFIC BARRIER  
TERMINAL, TYPE 5**

**STANDARD 631026-06**