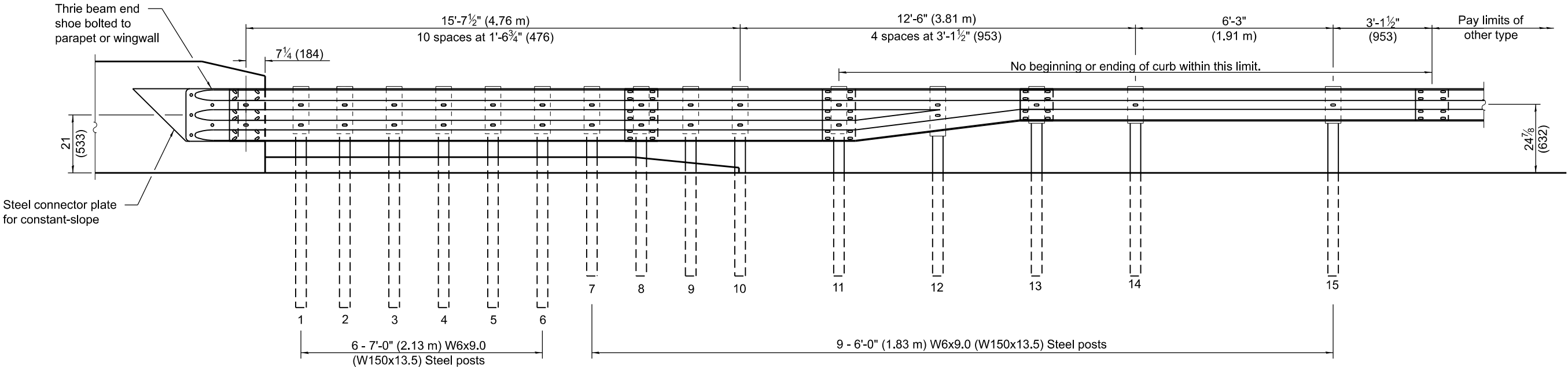
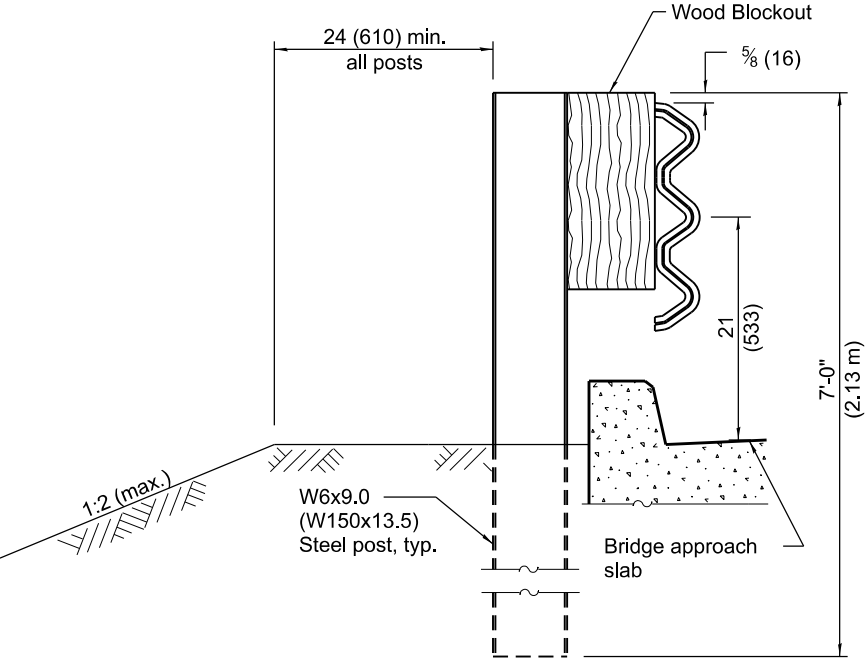


PLAN



ELEVATION



SECTION A-A

GENERAL NOTES


- See Standard 630001 for details of guardrail not shown.
- Thrie beam rail shall be bolted to block-out at all posts.
- All slope ratios are expressed as units of vertical displacement to units of horizontal displacement (V:H).
- All dimensions are in inches (millimeters) unless otherwise shown.

DATE	REVISIONS
1-1-23	Removed two posts, revised blockouts, and removed notes on sheet 4.
1-1-21	Added Detail A and revised plate dimensions on sheet 4.

TRAFFIC BARRIER
TERMINAL, TYPE 6

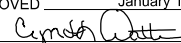
(Sheet 1 of 4)

STANDARD 631031-18



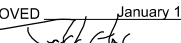
Illinois Department of Transportation

APPROVED January 1, 2023



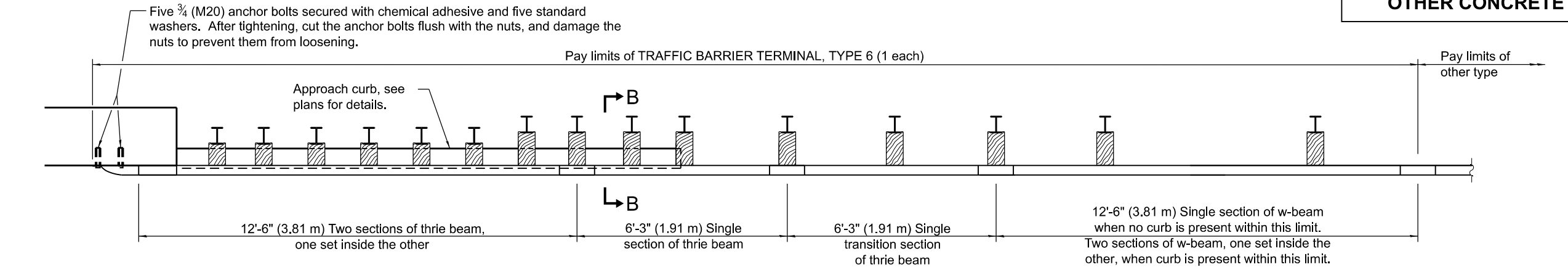
ENGINEER OF SAFETY PROG. AND ENGINEERING

APPROVED January 1, 2023

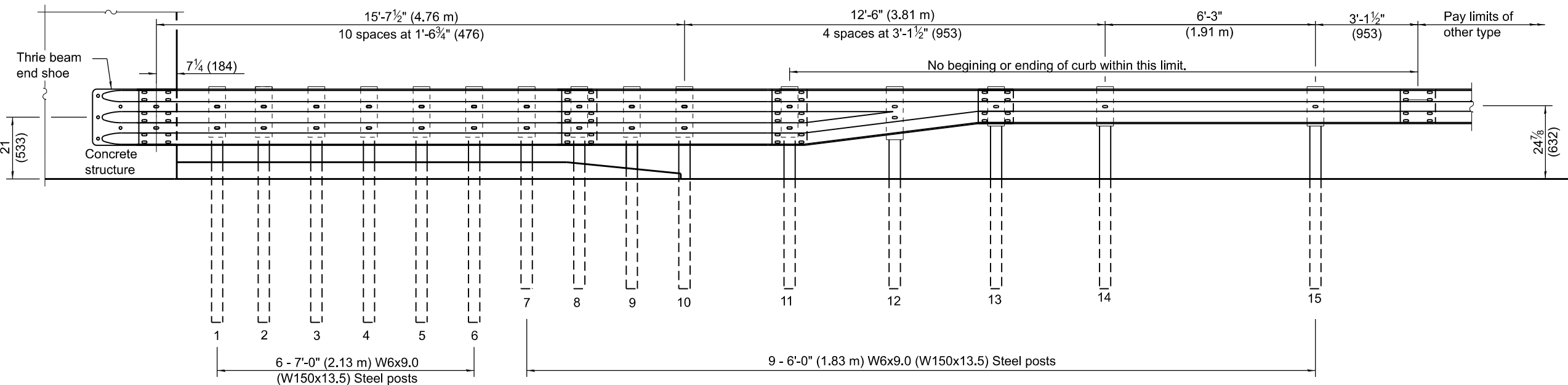


ENGINEER OF DESIGN AND ENVIRONMENT

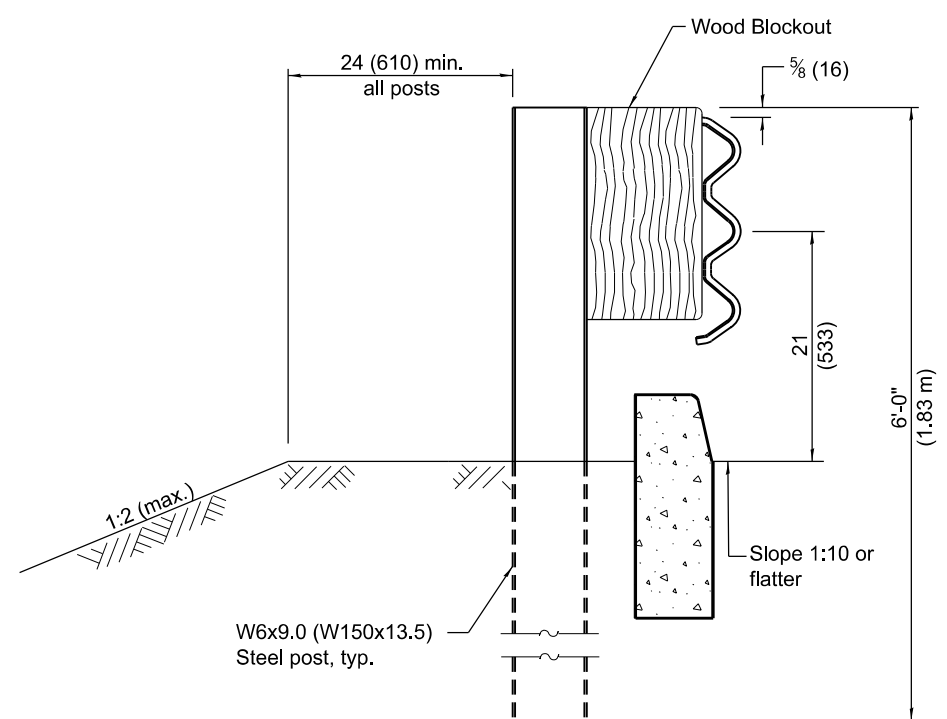
ISSUED 1-1-97



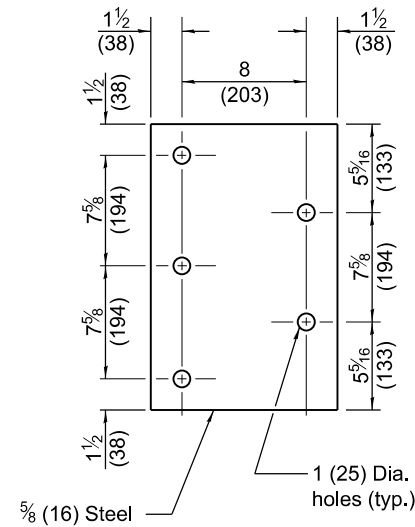
PLAN



ELEVATION

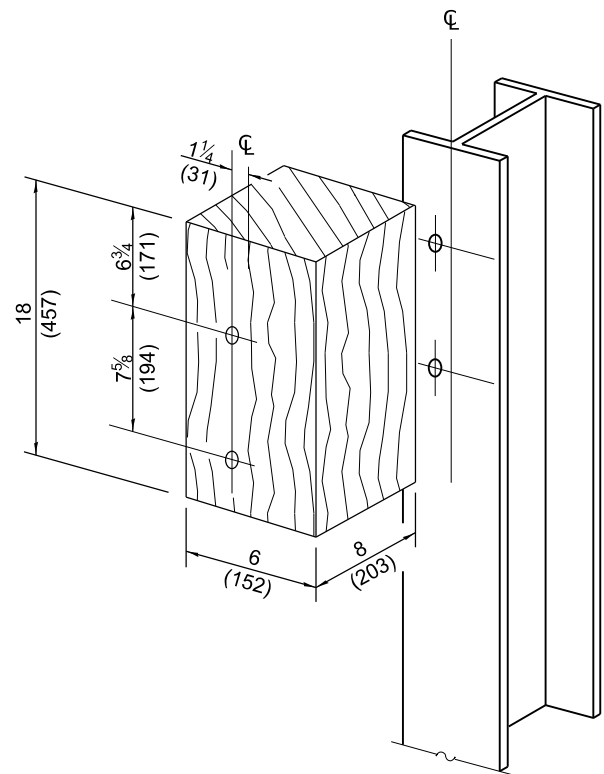


SECTION B-B

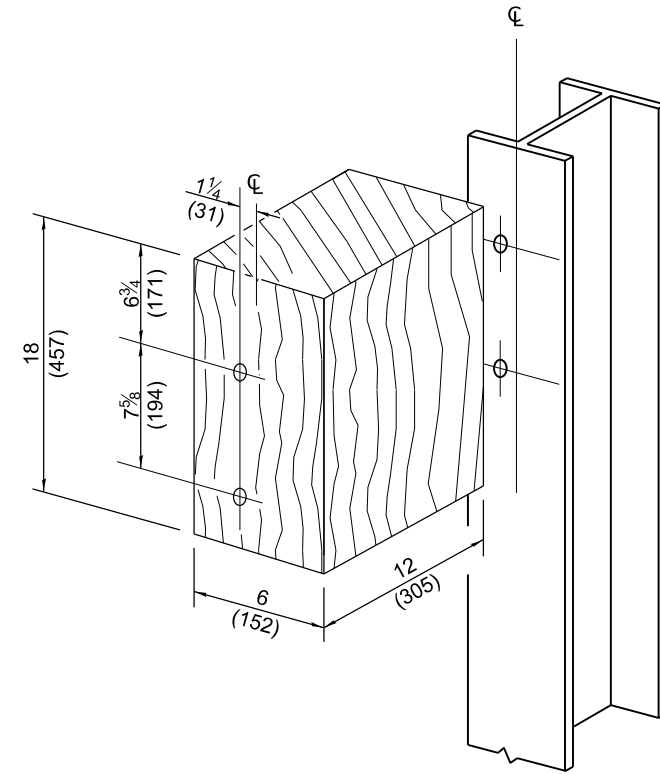


STEEL BEARING PLATE FOR F-SHAPE PARAPET

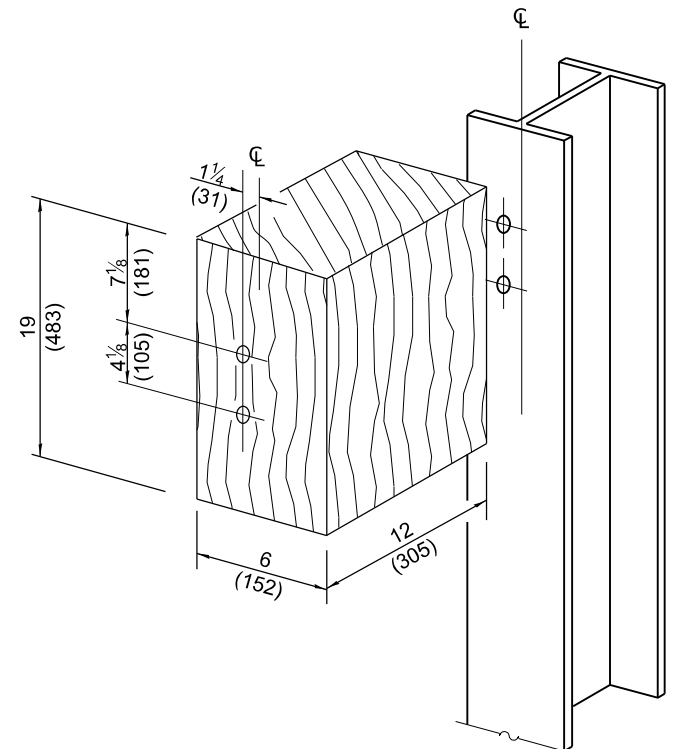
(5 each individual 5x5x5/8 (125x125x16) steel plates with centered 1 (25) holes may be substituted for the plate shown.)



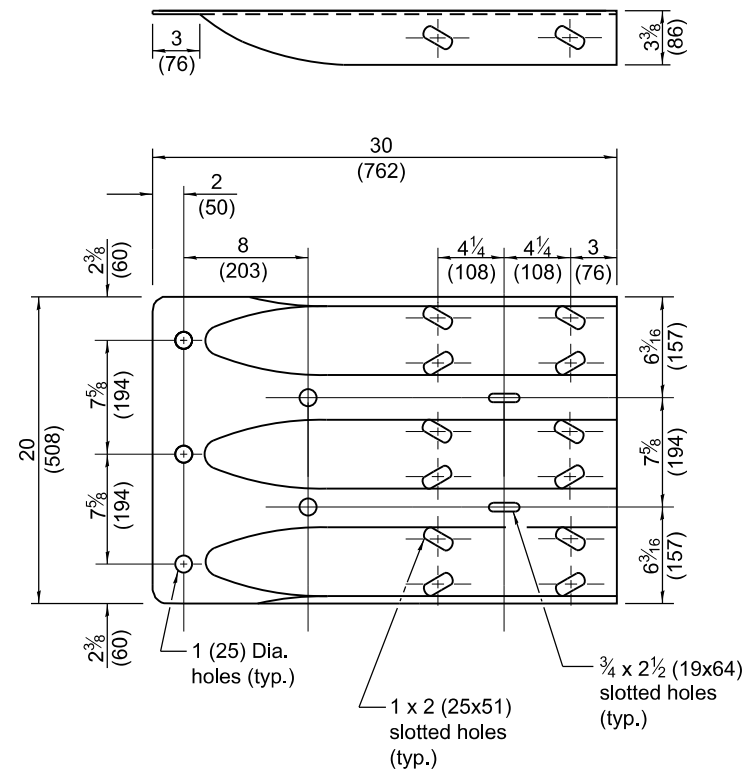
POSTS 1-6 WOOD BLOCKOUT DETAIL



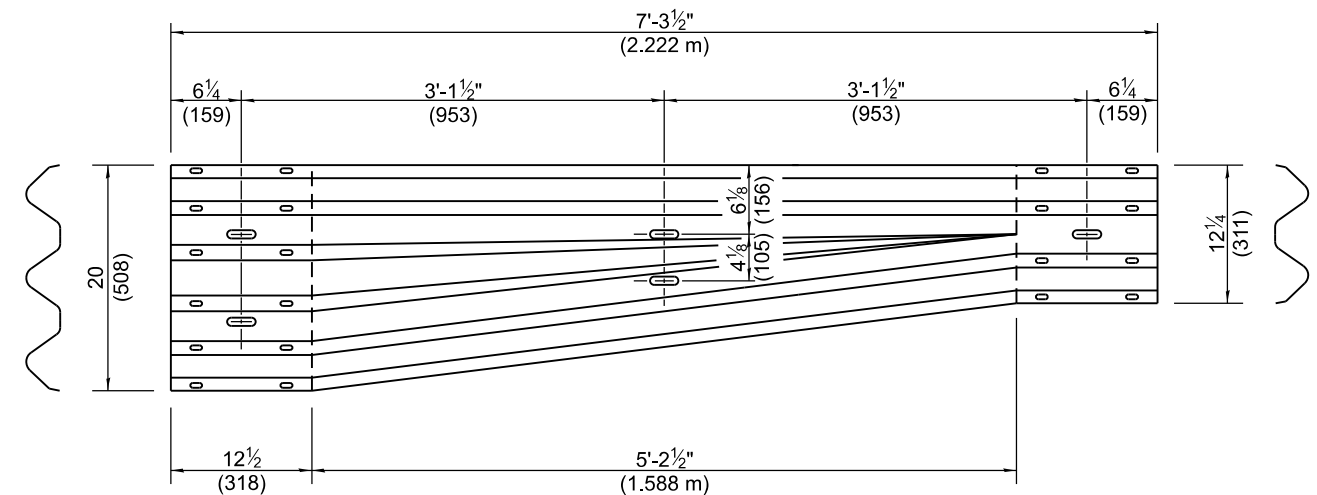
POSTS 7-11 WOOD BLOCKOUT DETAIL



POST 12 WOOD BLOCKOUT DETAIL

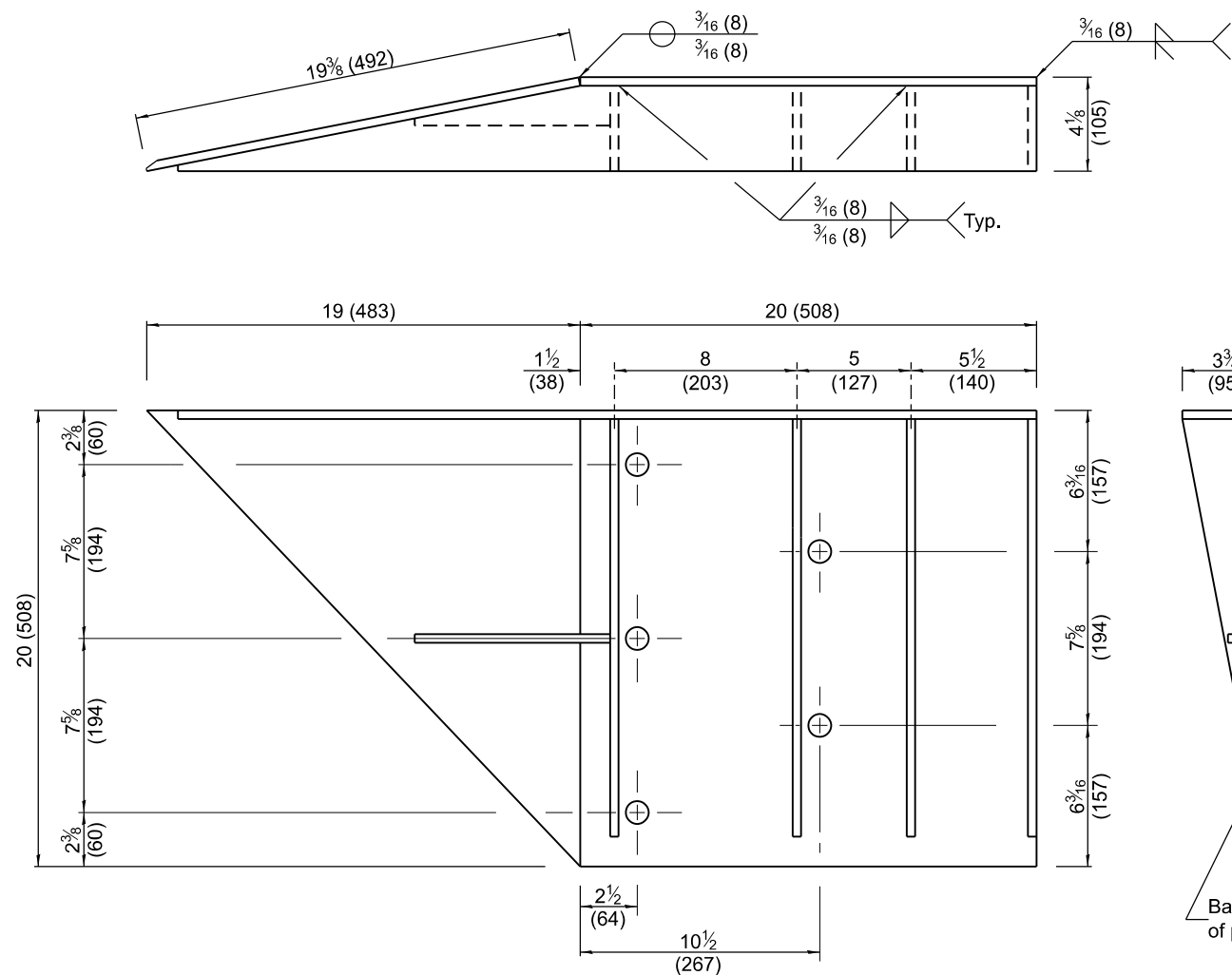


THREE BEAM END SHOE DETAIL



TRANSITION SECTION

(10 gauge (3.4) rail element)



WELDING INSTRUCTION
(Back side of plate shown)

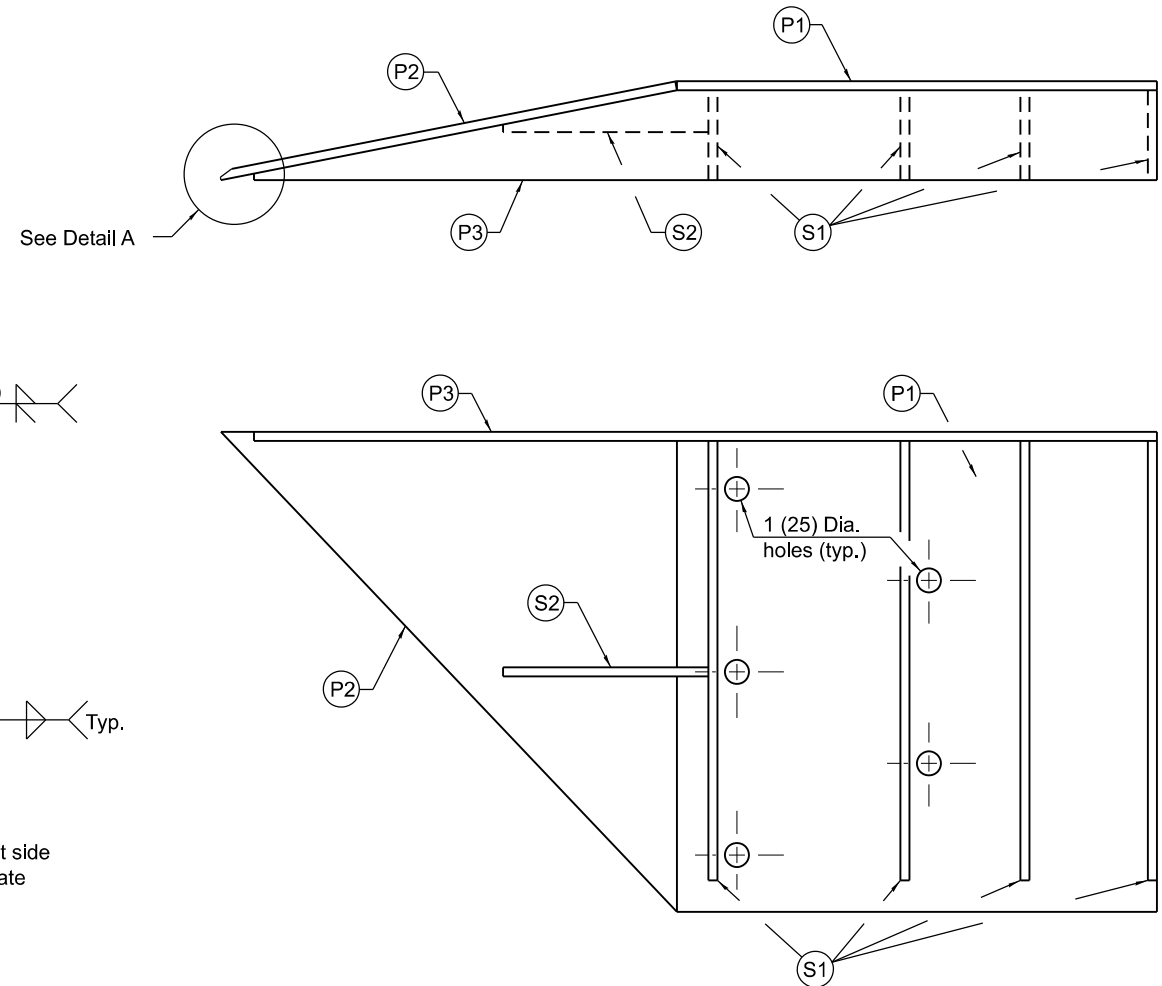
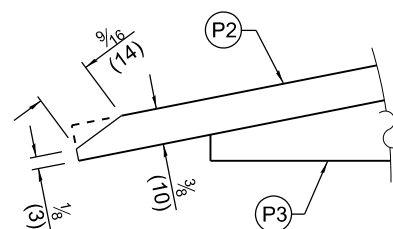


PLATE AND STIFFENER IDENTIFICATION
(Back side of plate shown)



DETAIL A
(Bevel front corner of plate P2
as shown for handling purposes.)

CONNECTOR PLATE DIMENSION (PER ASSEMBLY)				
PLATE	QUANTITY	SHAPE	SIZE A x B x C x D x E	THICKNESS
P1	1		20 x 20 (508 x 508)	3/8 (10)
P2	1		19 3/8 x 20 x 27 13/16 (492 x 508 x 706)	3/8 (10)
P3	1		20 x 3 3/4 x 37 5/8 x 1/4 x 17 15/16 (508 x 95 x 956 x 6 x 456)	3/8 (10)
S1	4		18 5/16 x 1/4 x 18 5/8 x 3 3/4 (465 x 6 x 473 x 95)	3/8 (10)
S2	1		1 5/16 x 1 3/4 x 8 1/16 x 3/8 x 6 7/8 (33 x 44 x 205 x 10 x 175)	3/8 (10)