

GENERAL NOTES

This standard shows attachment to side mounted bridge rail, Type SMX. Side mounted bridge rail, Type SM is similar.

See Standard 630001 for details of guardrail not shown.

Thrie beam rail shall be bolted to block-out at all posts.

All slope ratios are expressed as units of vertical displacement to units of horizontal displacement (V:H).

All dimensions are in inches (millimeters) unless otherwise shown.

DATE	REVISIONS
1-1-23	Updated bridge rail connection to match the new Type SMX. Revised post spacing, blockouts, and details to match other TBTs.
1-1-17	Revised length of thrie beam. Revised length of posts.

TRAFFIC BARRIER TERMINAL, TYPE 6A

(Sheet 1 of 3)

STANDARD 631032-10

Illinois Department of Transportation

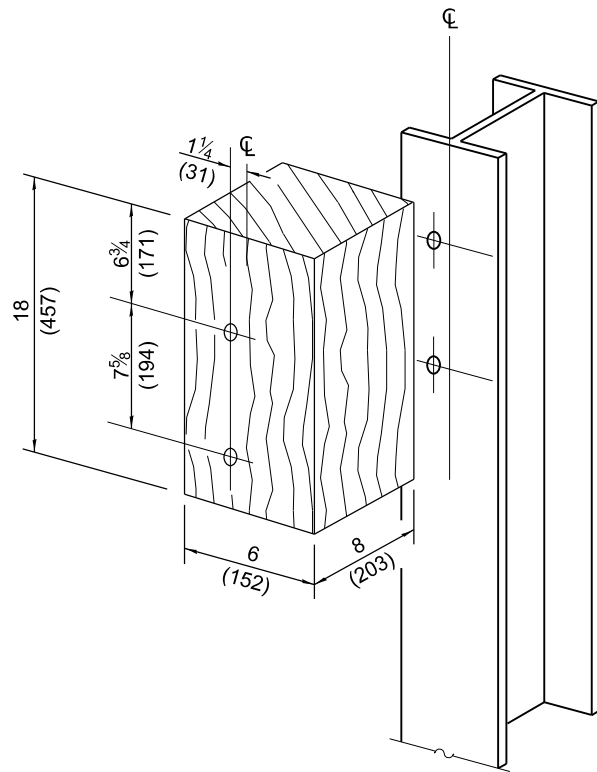
APPROVED January 1, 2023

ENGINEER OF SAFETY PROG. AND ENGINEERING

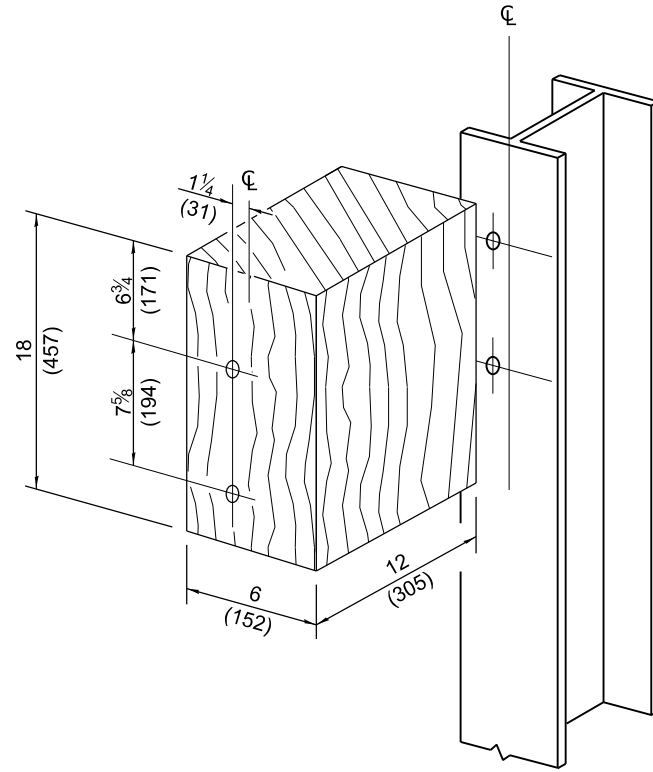
APPROVED January 1, 2023

ENGINEER OF DESIGN AND ENVIRONMENT

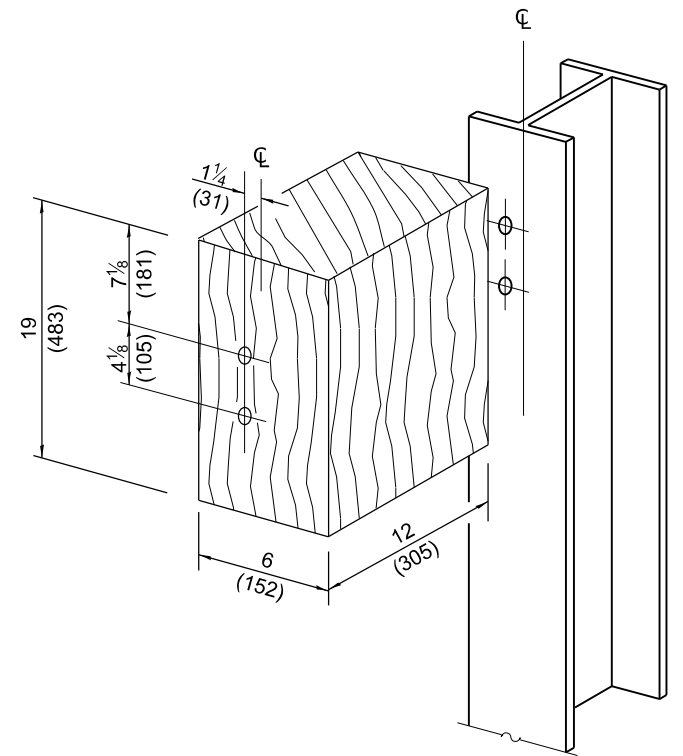
ISSUED 1-1-03



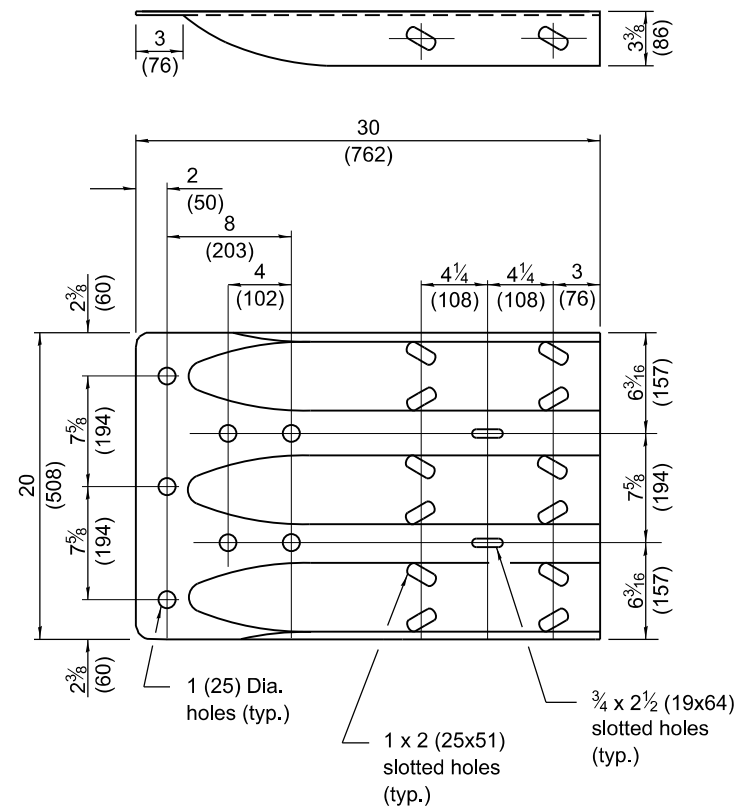
POSTS 1-6 WOOD BLOCKOUT DETAIL



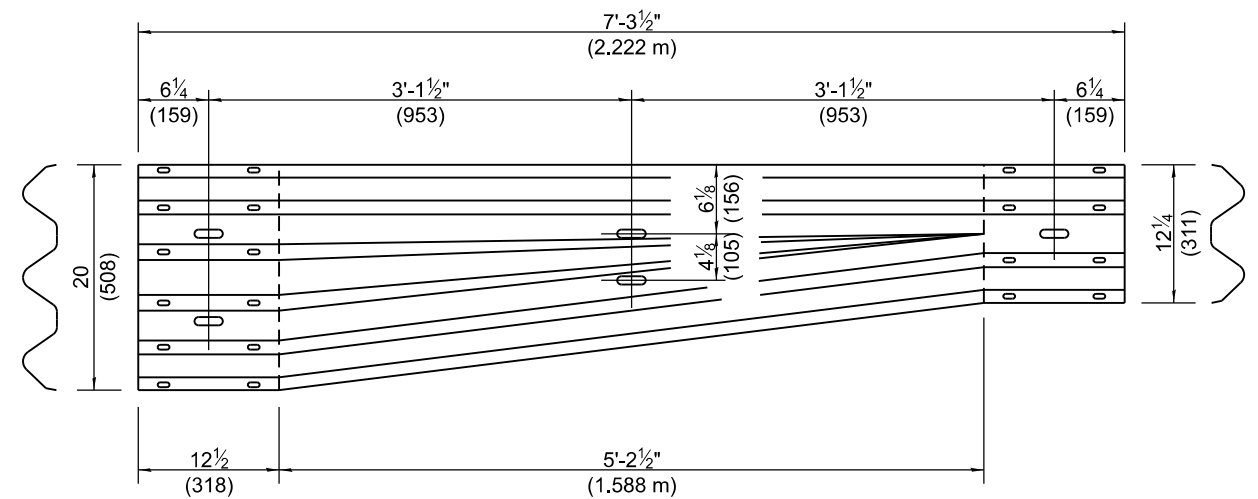
POSTS 7-11 WOOD BLOCKOUT DETAIL



POST 12 WOOD BLOCKOUT DETAIL



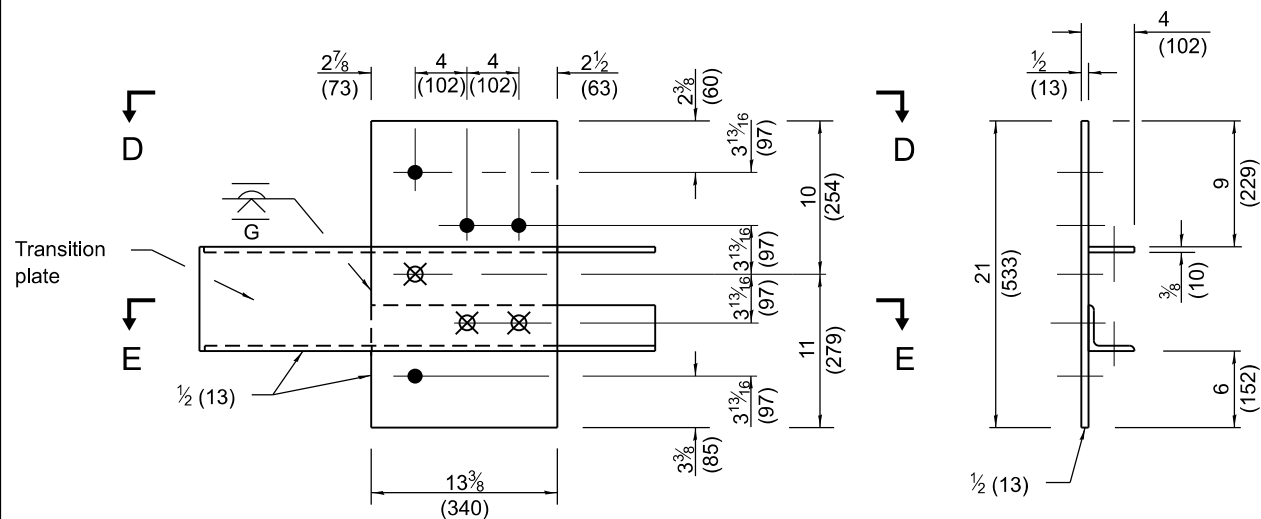
MODIFIED THRIE BEAM END SHOE DETAIL



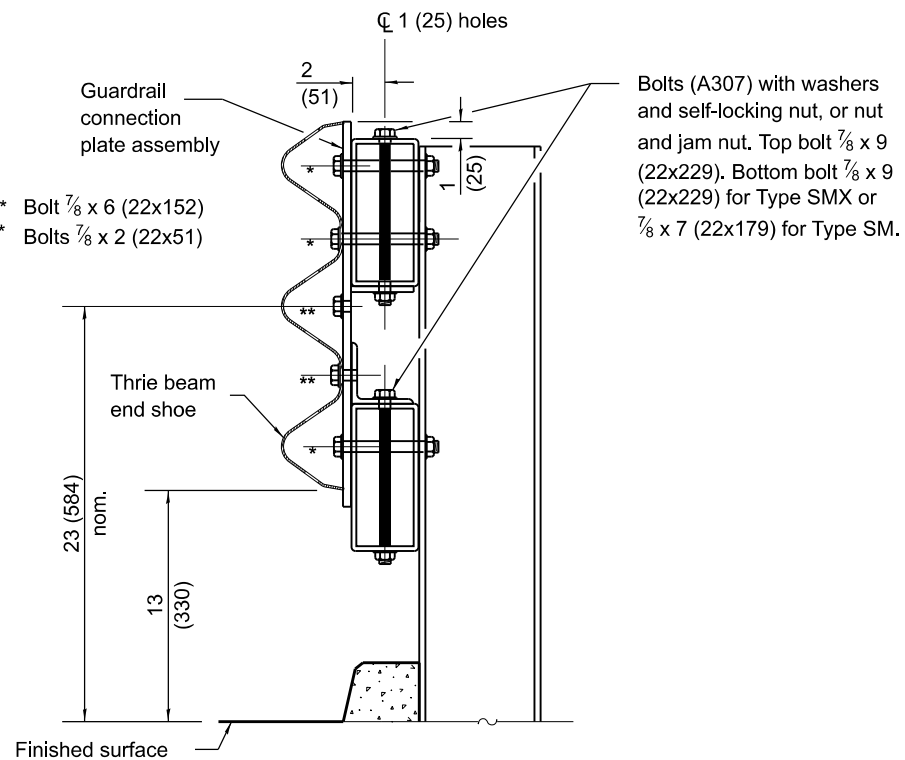
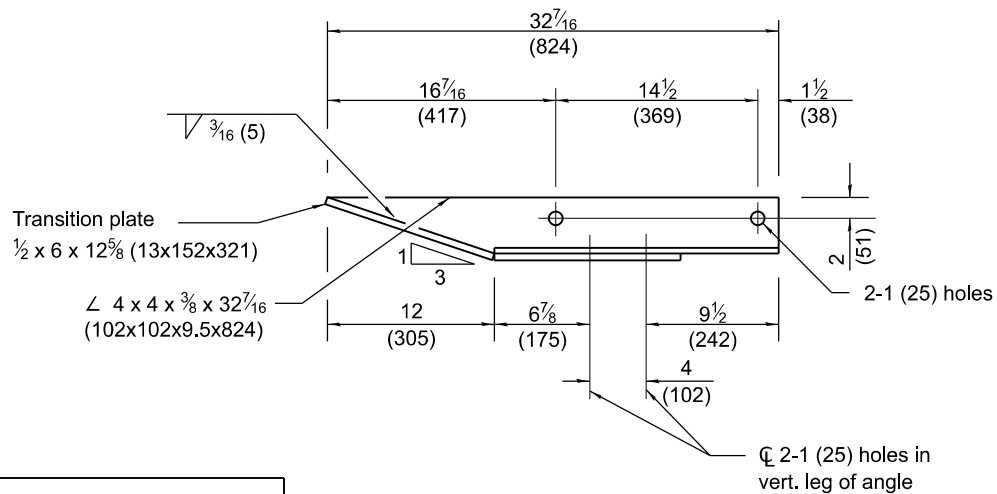
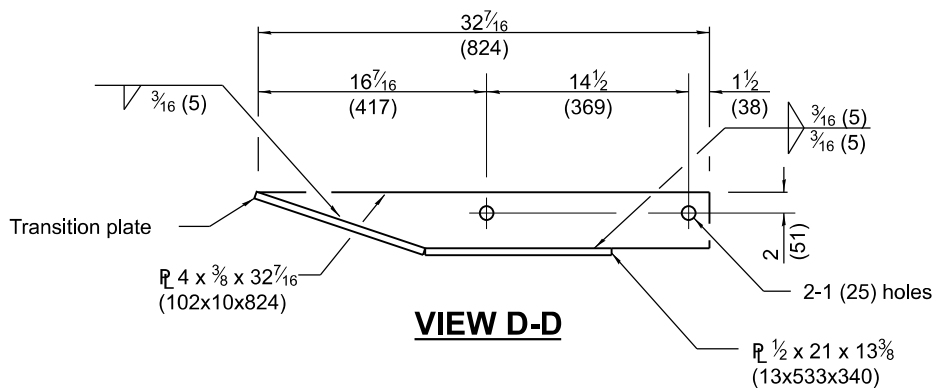
TRANSITION SECTION
(10 gauge (3.4) rail element)

LEGEND

- 1 (25) dia. hole for $\frac{7}{8}$ (22) dia. H.S. bolt with washer and nut.
- ⊗ Drill and tap hole for $\frac{7}{8}$ (22) dia. H.S. bolt.

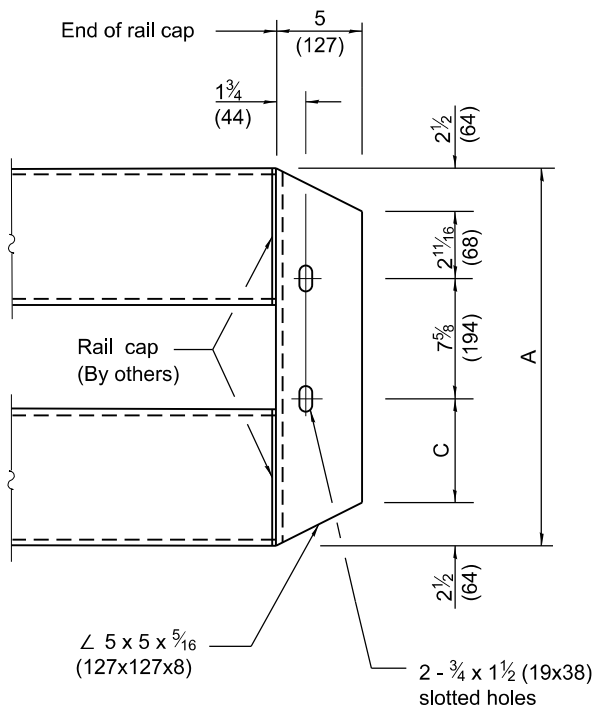


GUARDRAIL CONNECTION PLATE ASSEMBLY DETAILS
(Mirror for opposite end)

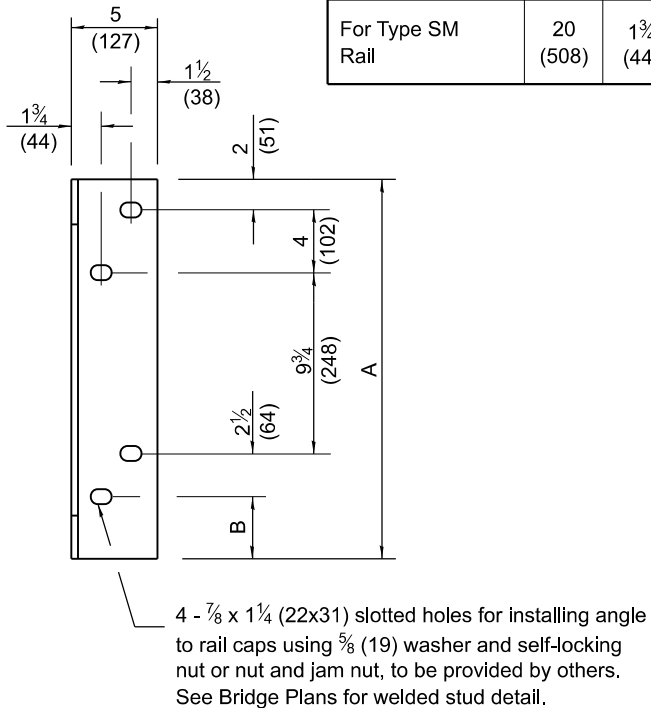


SECTION C-C

Dimensions	A	B	C
For Type SMX Rail	22 (560)	3 3/4 (95)	6 1/16 (170)
For Type SM Rail	20 (508)	1 3/4 (44)	4 1/16 (119)



TRANSITION ANGLE
(Mirror for opposite end.)



TRAFFIC BARRIER TERMINAL, TYPE 6A

(Sheet 3 of 3)

STANDARD 631032-10