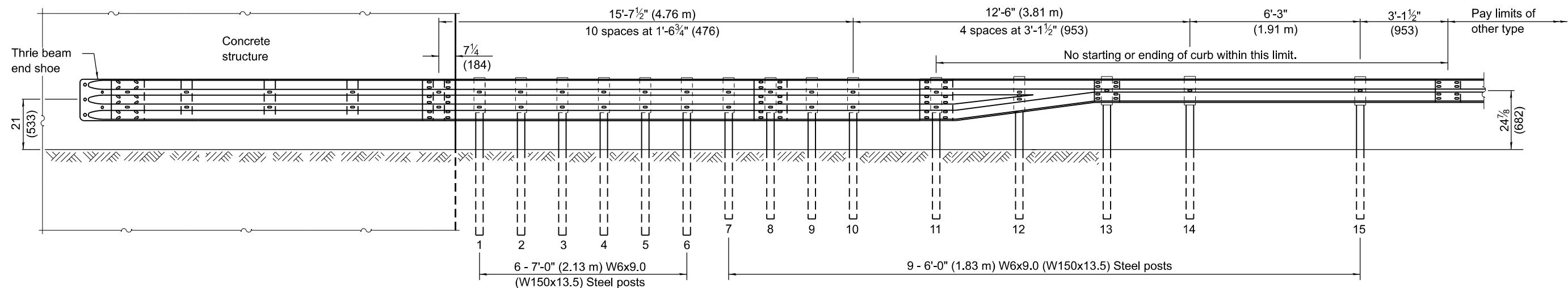
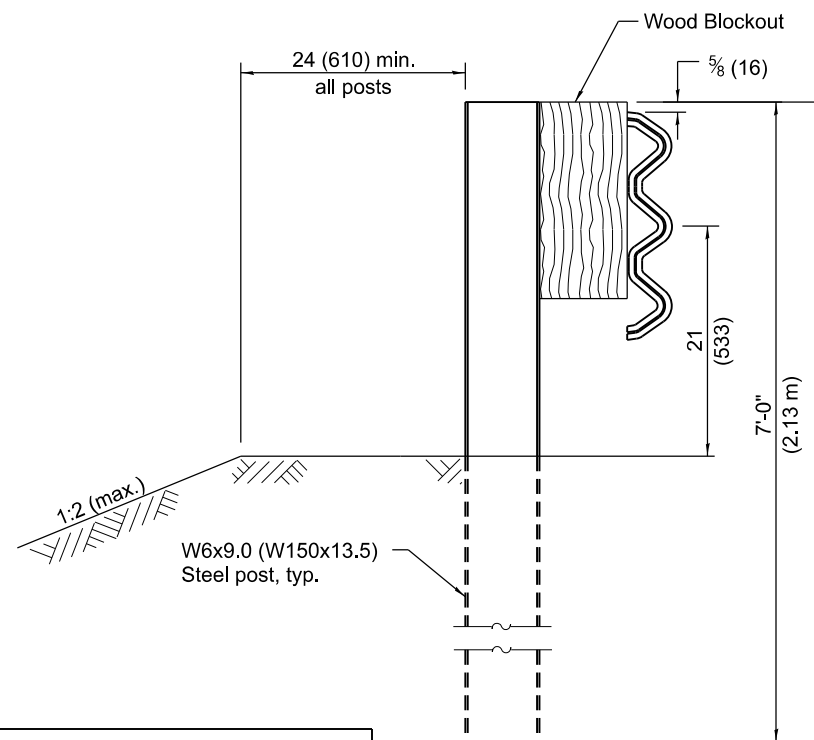


* With standard washers. After tightening, cut the anchor bolts flush with the nuts and damage the nuts to prevent them from loosening.

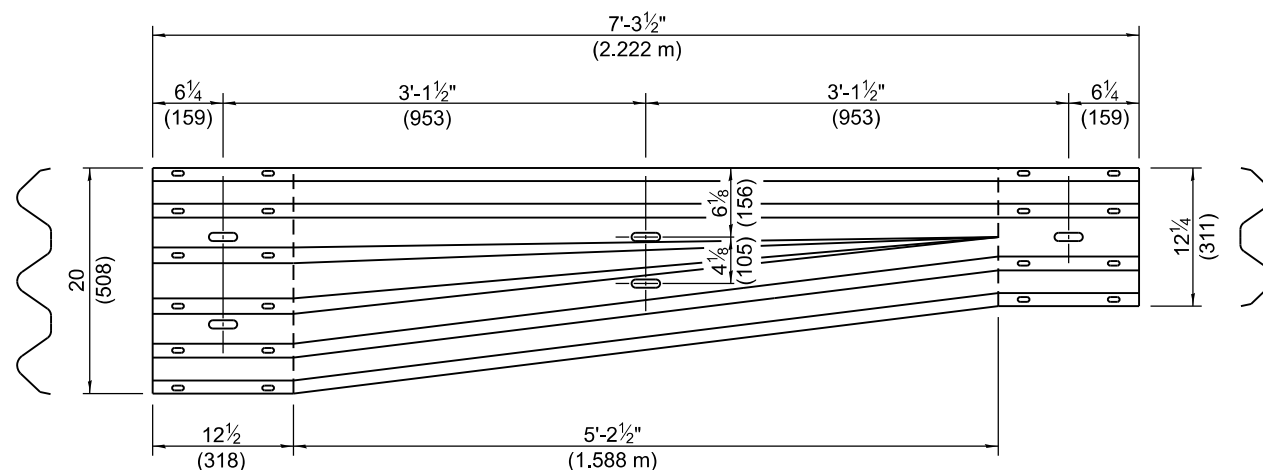
PLAN



ELEVATION



SECTION A-A



TRANSITION SECTION

(10 gauge (3.4) rail element)

GENERAL NOTES

See Standard 630001 for details of guardrail not shown.

Thrie beam rail shall be bolted to block-out at all posts.

All slope ratios are expressed as units of vertical displacement to units of horizontal displacement (V:H).

All dimensions are in inches (millimeters) unless otherwise shown.

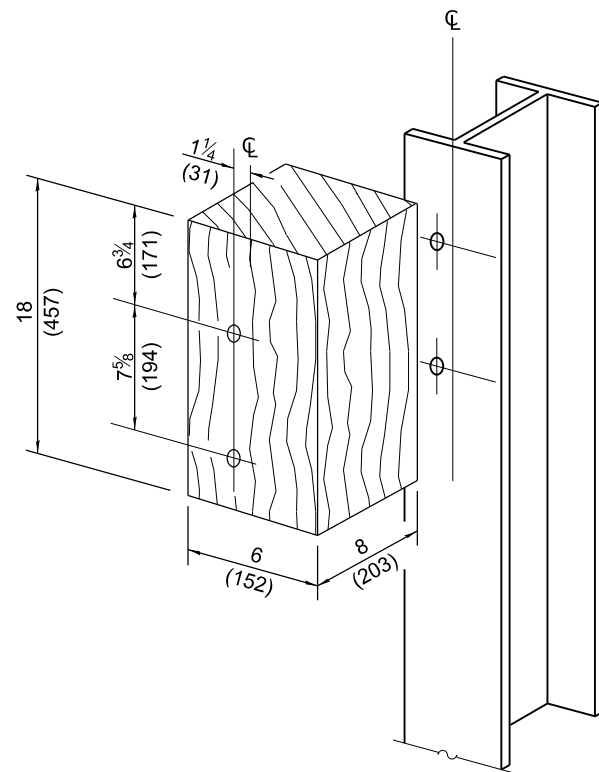
Illinois Department of Transportation	
APPROVED January 1, 2023 ENGINEER OF SAFETY PROG. AND ENGINEERING	ISSUED 1-1-03
APPROVED January 1, 2023 ENGINEER OF DESIGN AND ENVIRONMENT	

DATE	REVISIONS
1-1-23	Removed two posts and revised blockouts to be consistent with other TBTs.
1-1-20	Added two posts and revised length of posts.

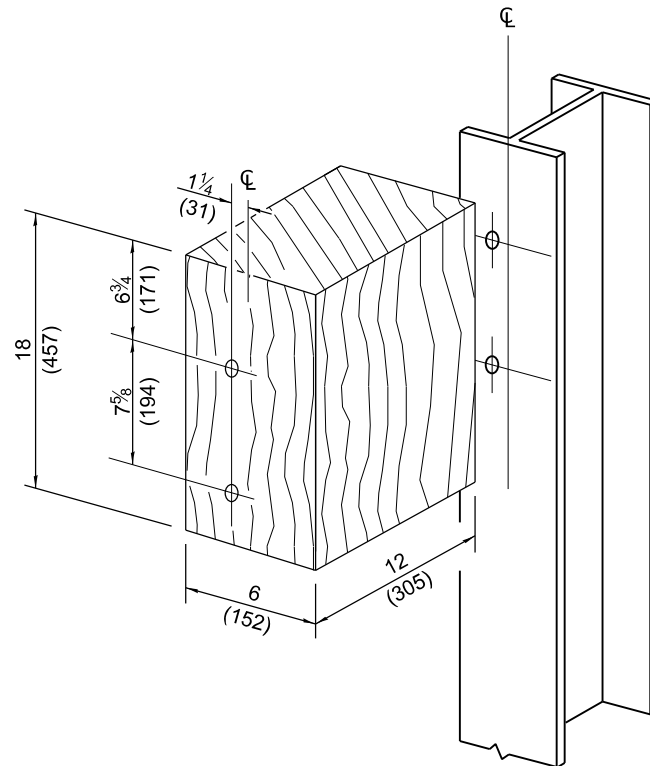
TRAFFIC BARRIER TERMINAL, TYPE 6B

(Sheet 1 of 2)

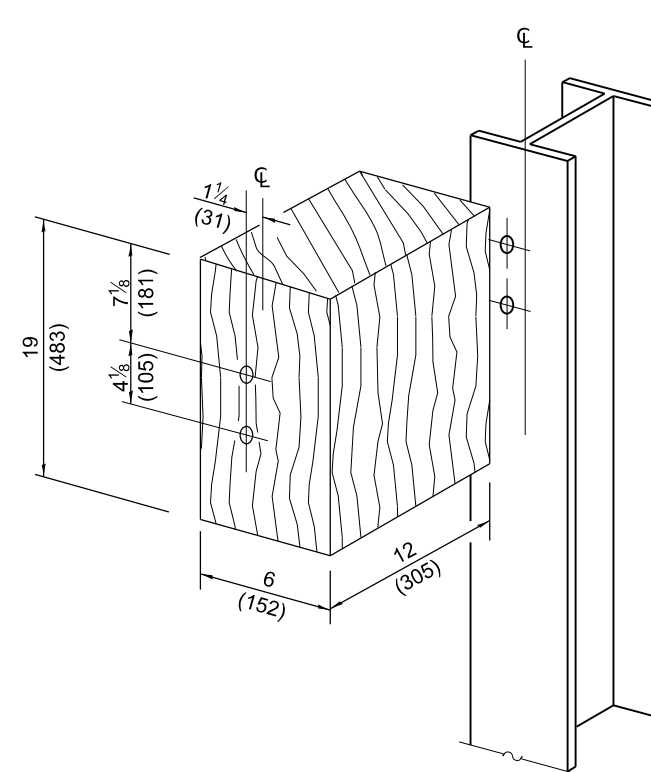
STANDARD 631033-09



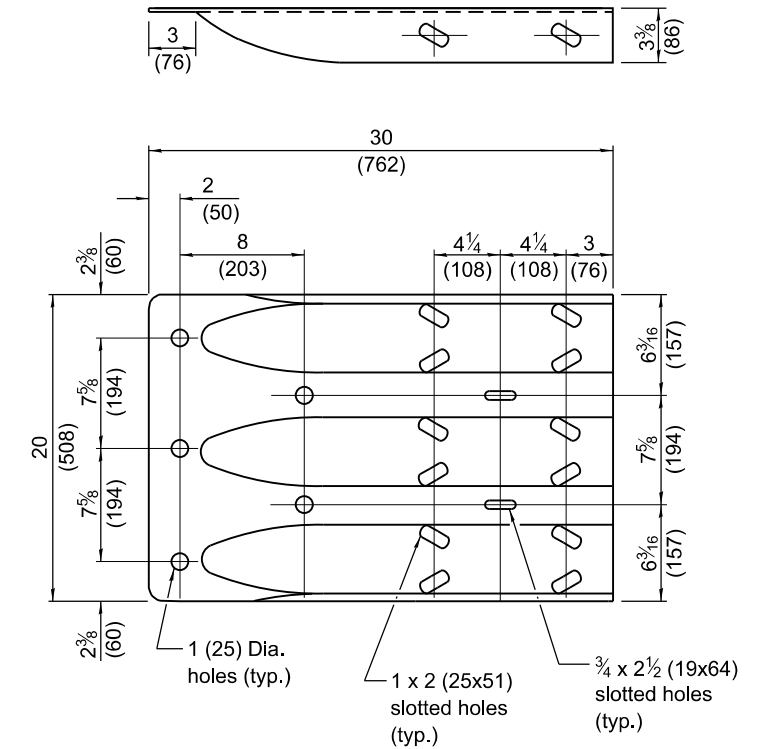
POSTS 1-6 WOOD BLOCKOUT DETAIL



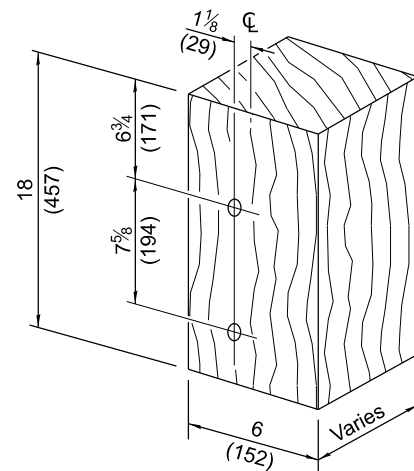
POSTS 7-11 WOOD BLOCKOUT DETAIL



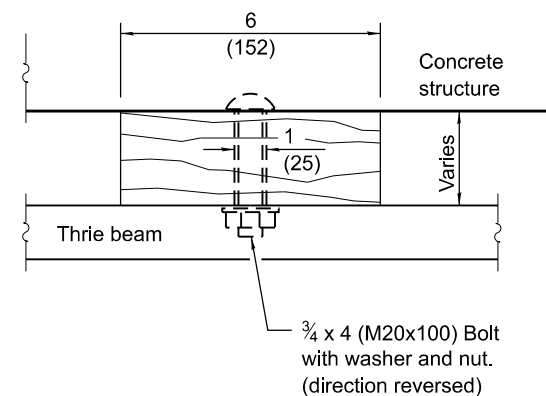
POSTS 12 WOOD BLOCKOUT DETAIL



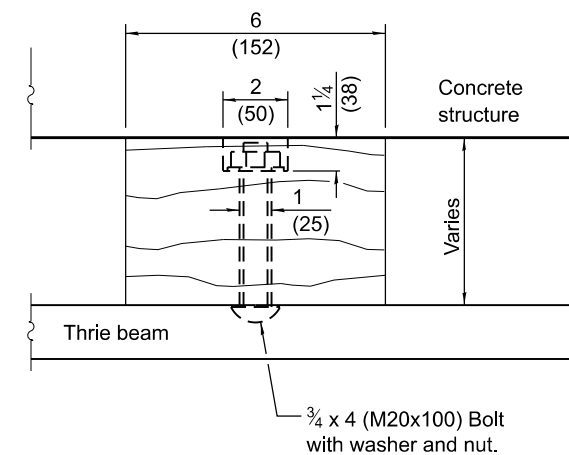
THRIE BEAM END SHOE DETAIL



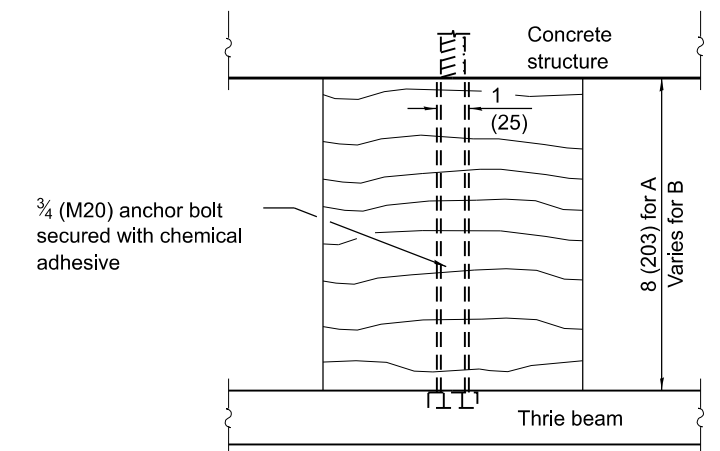
**MODIFIED THICKNESS DETAIL
WOOD BLOCKOUTS A, B, C, & D**



WOOD BLOCKOUT D



WOOD BLOCKOUT C



WOOD BLOCKOUT A & B