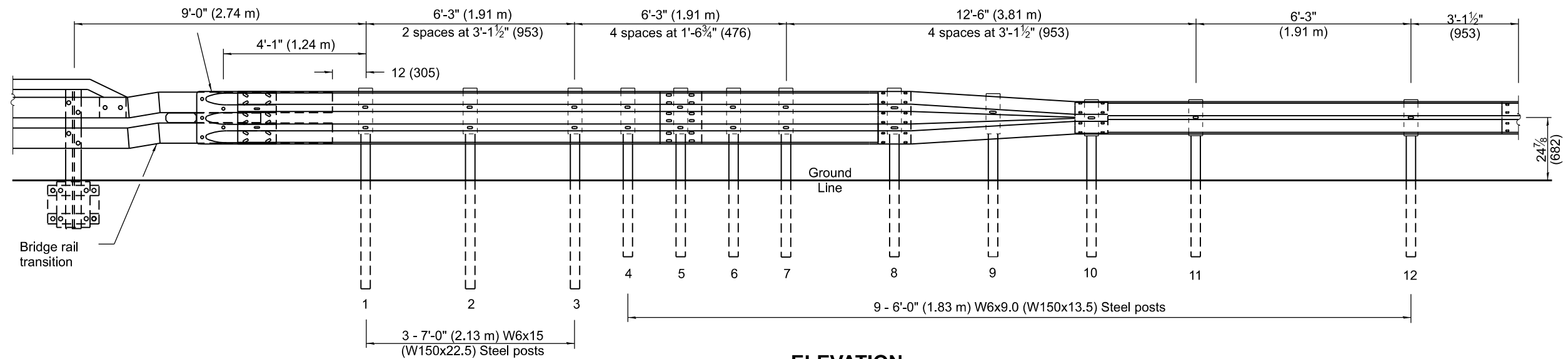
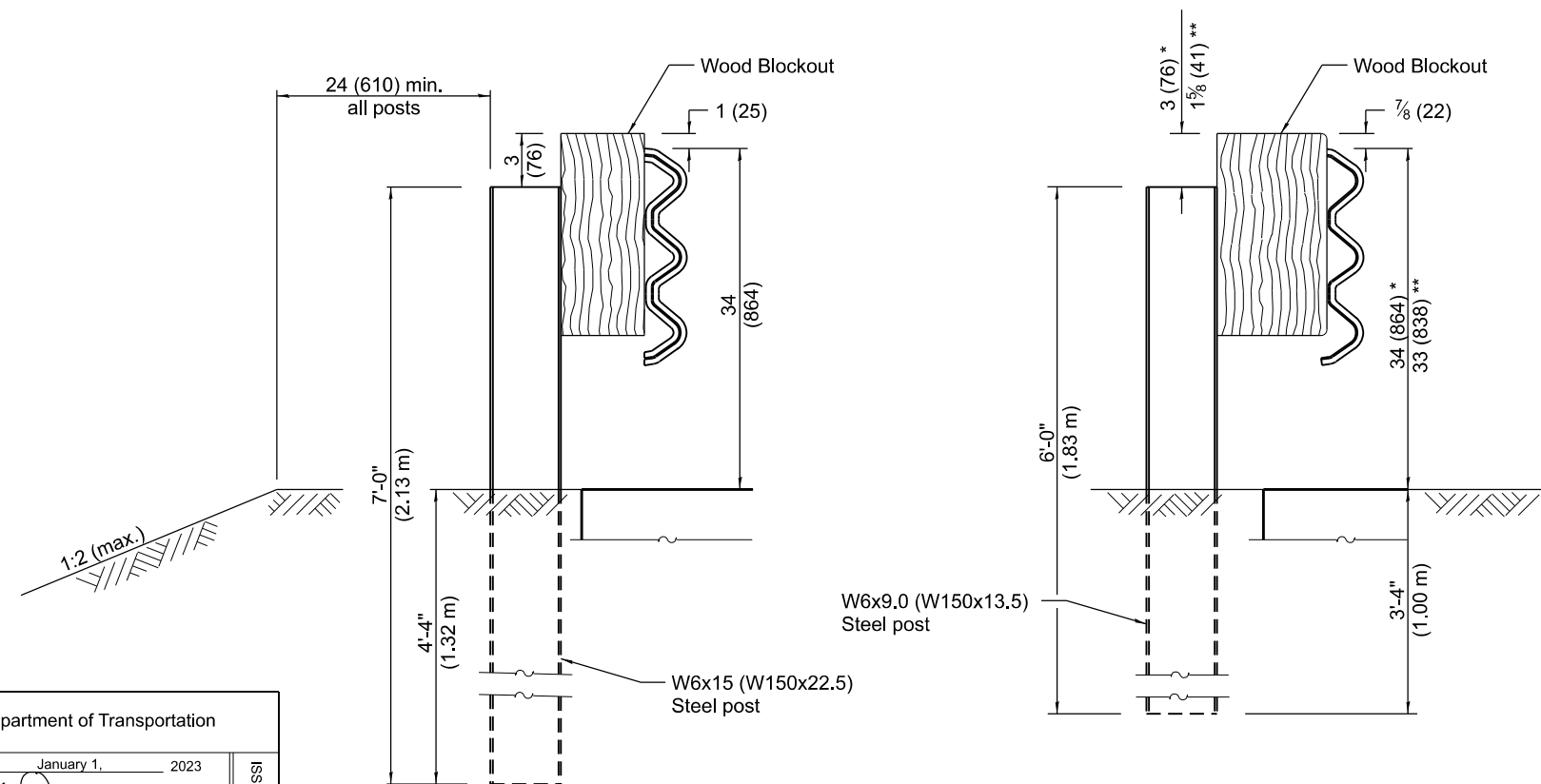


**PLAN**



**ELEVATION**



**SECTION A-A**

Posts 1-3

**SECTION B-B**

\* Posts 4-8  
\*\* Post 9

**GENERAL NOTES**

This standard shows attachment to side mounted bridge railing, Type IL-OH.

See Standard 630001 for details of guardrail not shown.

Thrie beam rail shall be bolted to block-out at all posts.

All slope ratios are expressed as units of vertical displacement to units of horizontal displacement (V:H).

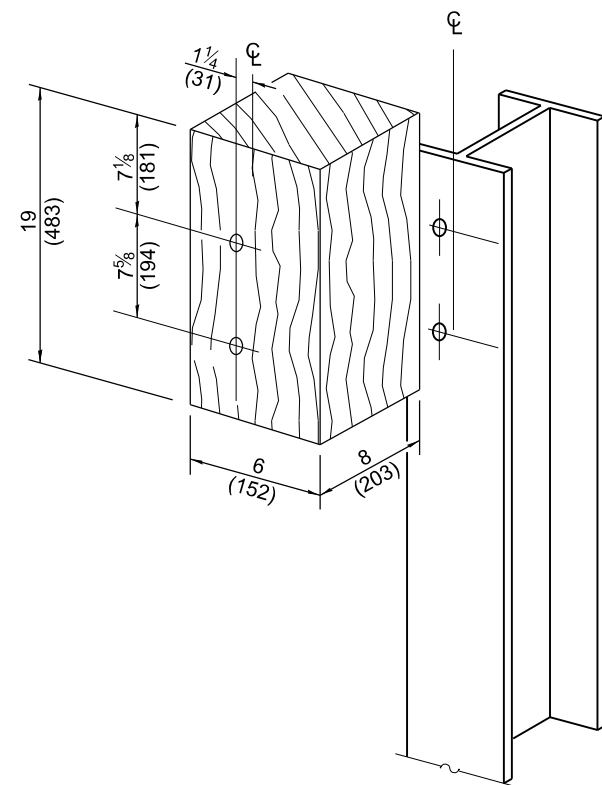
All dimensions are in inches (millimeters) unless otherwise shown.

DATE	REVISIONS
1-1-23	Revised pay limits to end at splice.
1-1-22	New Standard.

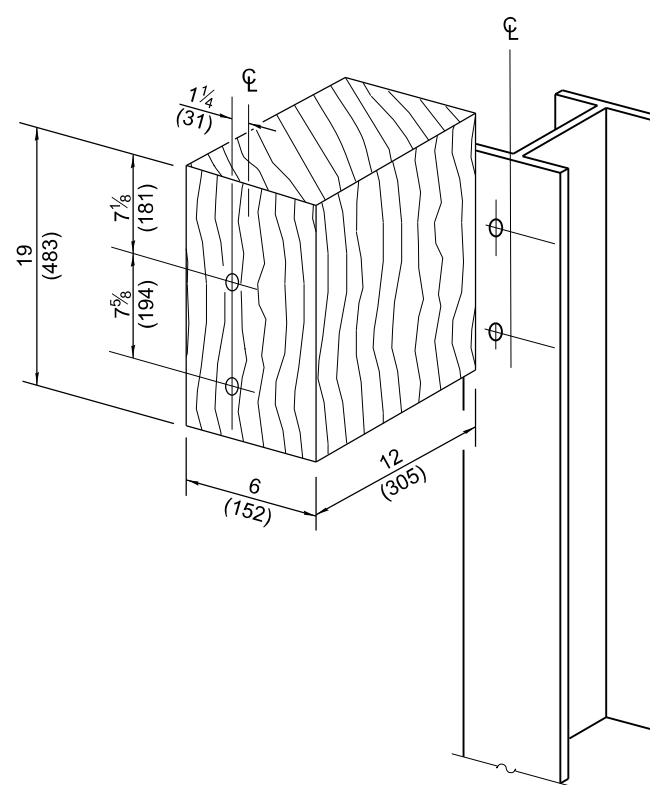
**TRAFFIC BARRIER  
TERMINAL, TYPE 13**

(Sheet 1 of 3)

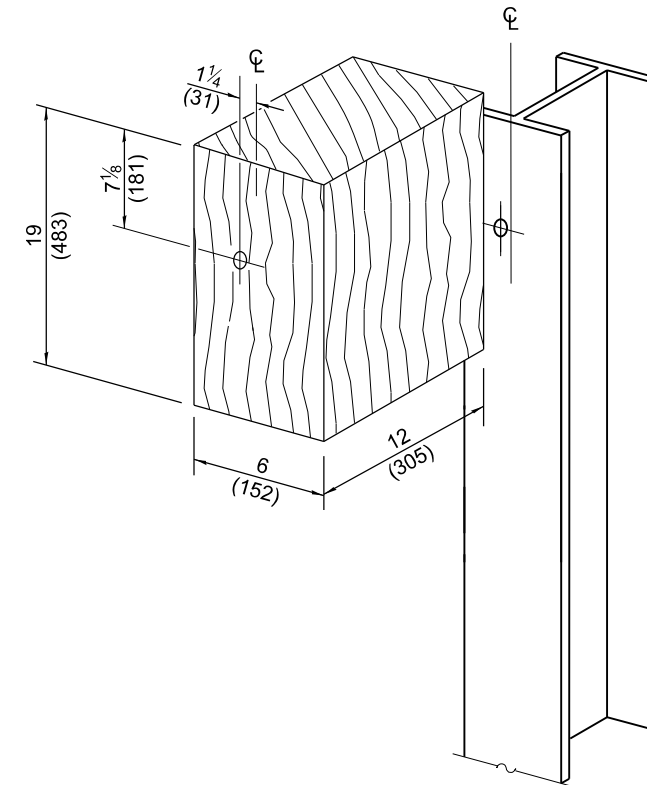
**STANDARD 631061-01**



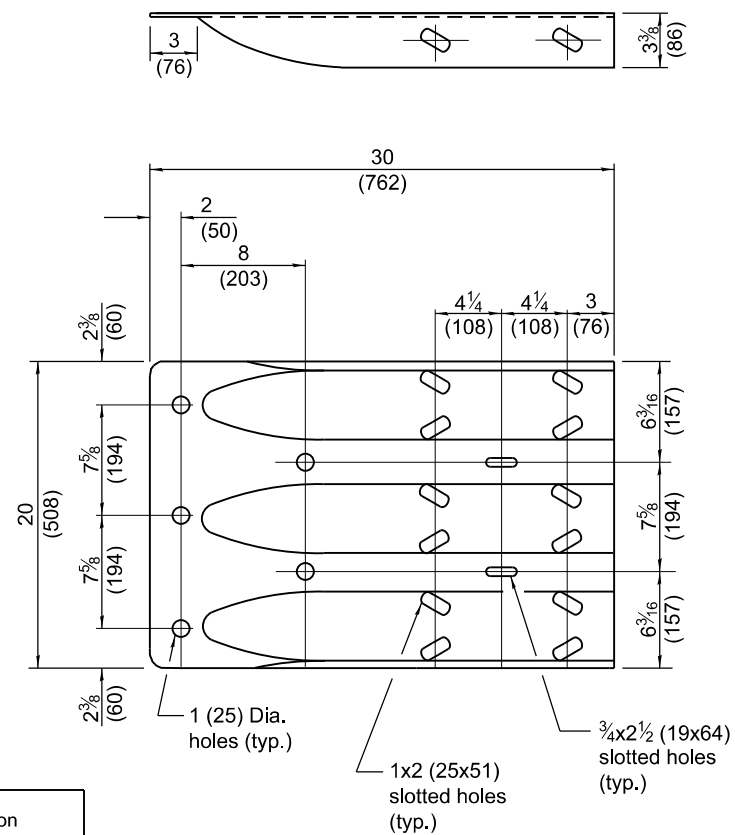
**POSTS 1-3 WOOD BLOCKOUT DETAIL**



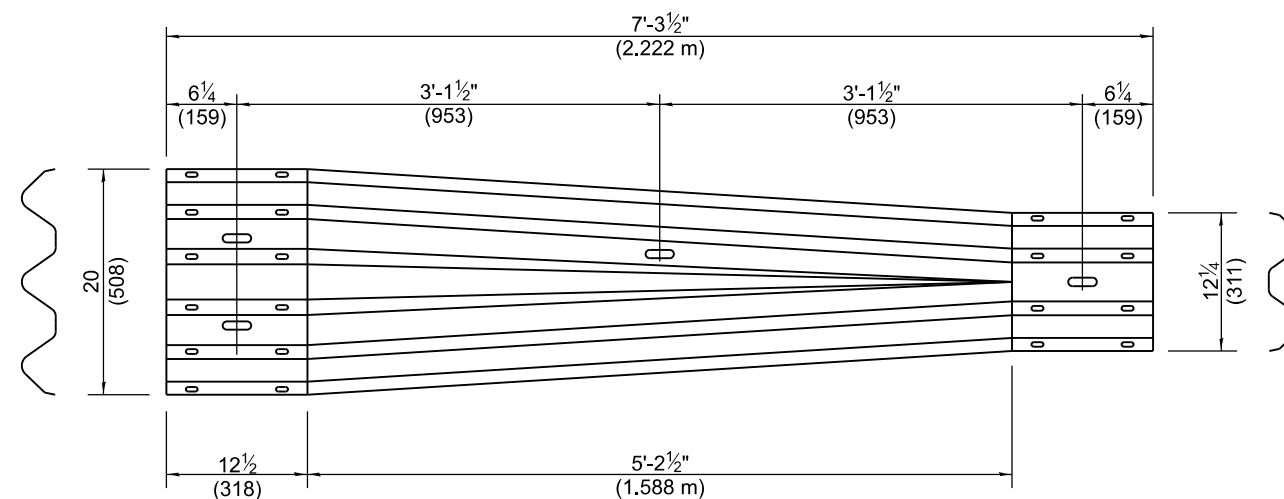
**POSTS 4-8 WOOD BLOCKOUT DETAIL**



**POST 9 WOOD BLOCKOUT DETAIL**



**THRIE BEAM END SHOE DETAIL**



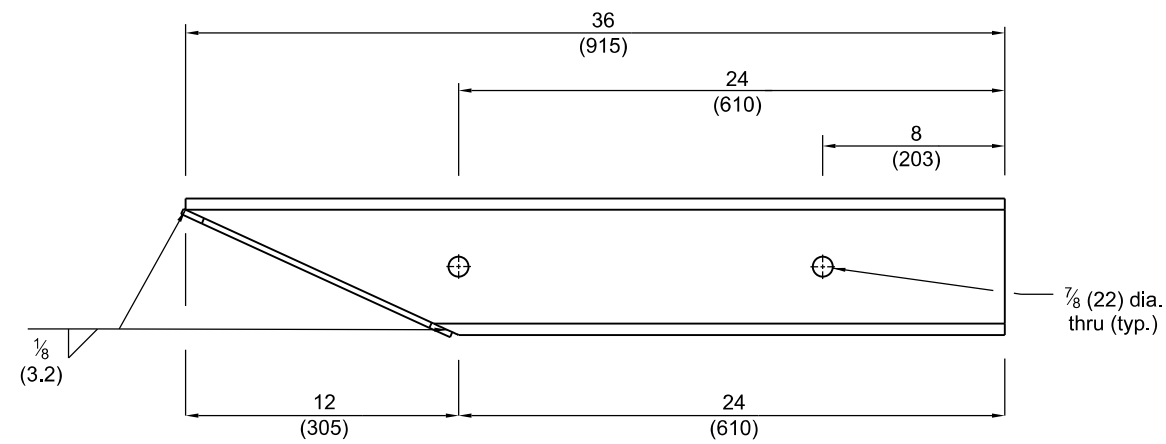
**TRANSITION SECTION**  
(10 gauge (3.4) rail element)

**TRAFFIC BARRIER  
TERMINAL, TYPE 13**

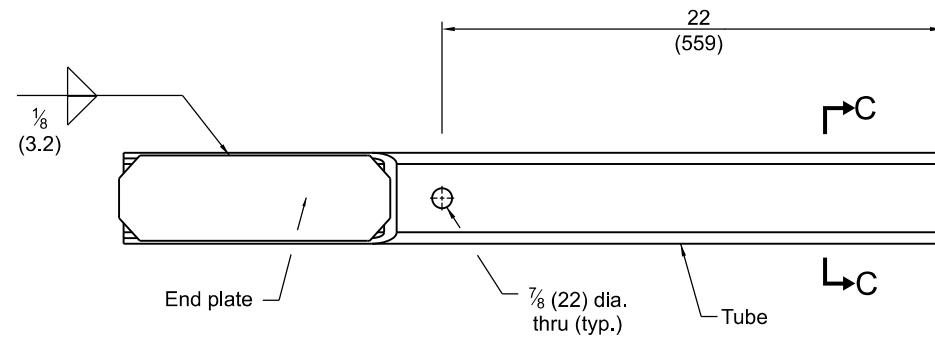
(Sheet 2 of 3)

**STANDARD 631061-01**

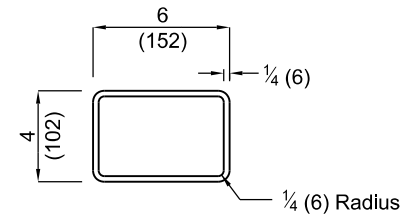
Illinois Department of Transportation	
APPROVED <u>January 1, 2023</u>  ENGINEER OF SAFETY PROG. AND ENGINEERING	ISSUED 1-1-22
APPROVED <u>January 1, 2023</u>  ENGINEER OF DESIGN AND ENVIRONMENT	



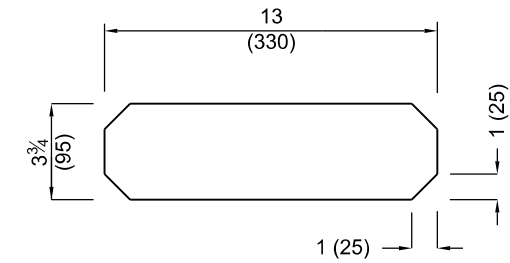
**PLAN**



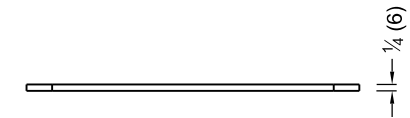
**ELEVATION**



**SECTION C-C**



**ELEVATION**

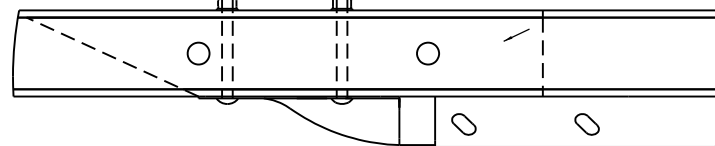


**PLAN**

**ANGLE CUT TUBE ASSEMBLY - END PLATE**

**ANGLE CUT TUBE ASSEMBLY**

3/4x7 1/2 (19x191) Round head bolts with heavy hex locknuts and flat washers (typ. x5)

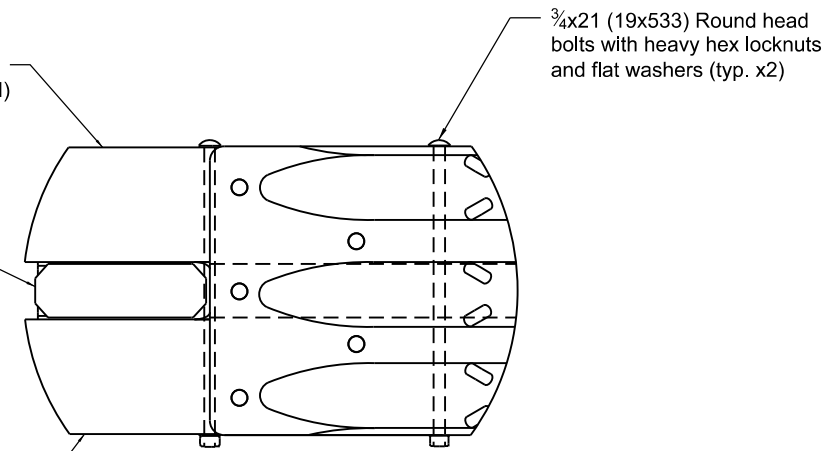


**PLAN**

Middle transition rail assembly (Type IL-OH)

Angle cut tube assembly

Bottom transition rail assembly (Type IL-OH)



**ELEVATION**

**BRIDGE RAIL CONNECTION DETAIL**

# **TRAFFIC BARRIER TERMINAL, TYPE 13**

(Sheet 3 of 3)

**STANDARD 631061-01**