

## GENERAL NOTES

This standard shows attachment to curb mounted bridge rail, Type CO-10.

See Standard 630001 for details of guardrail not shown.

Blockouts for posts 1-13 shall be HSS 12x6x1/4 (305x150x6) or solid wood of the same dimensions.

Thrie beam rail shall be bolted to block-out at all posts.

All slope ratios are expressed as units of vertical displacement to units of horizontal displacement (V:H).

All dimensions are in inches (millimeters) unless otherwise shown.

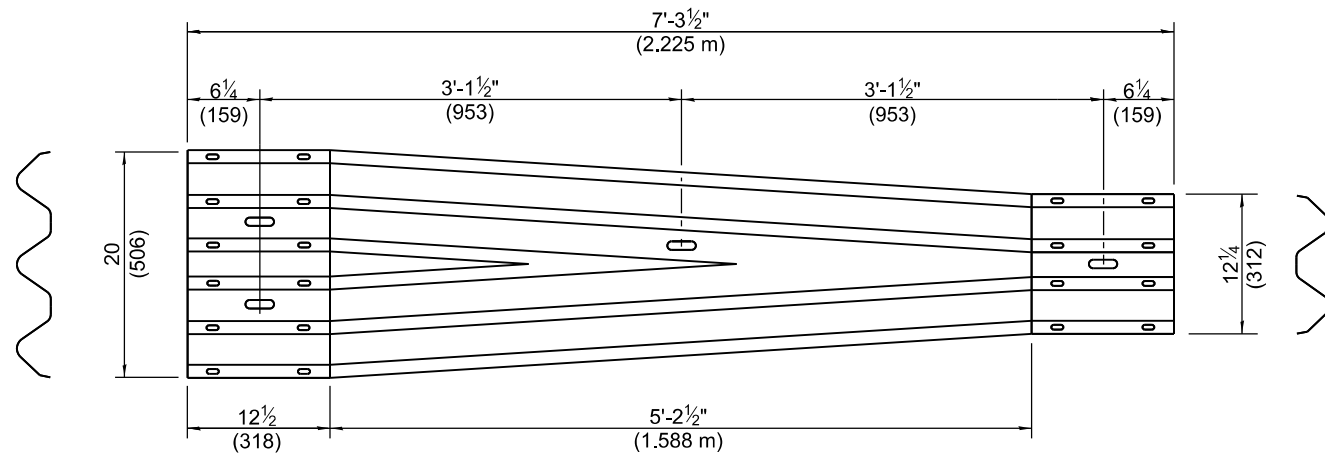
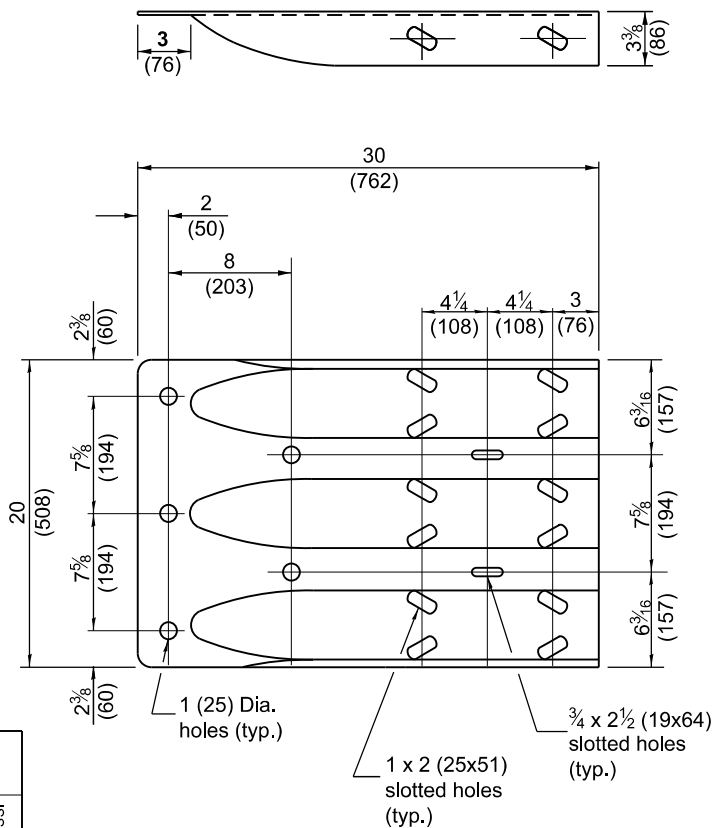
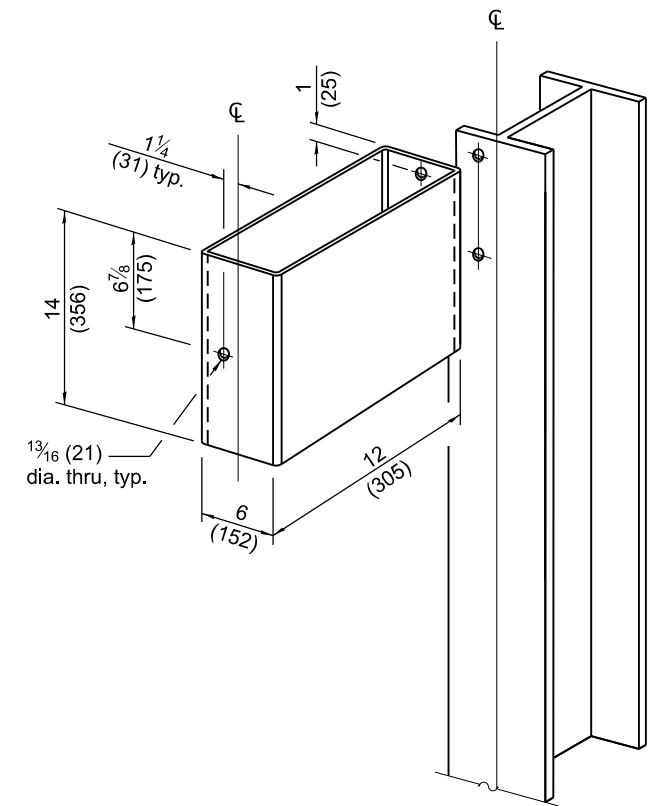
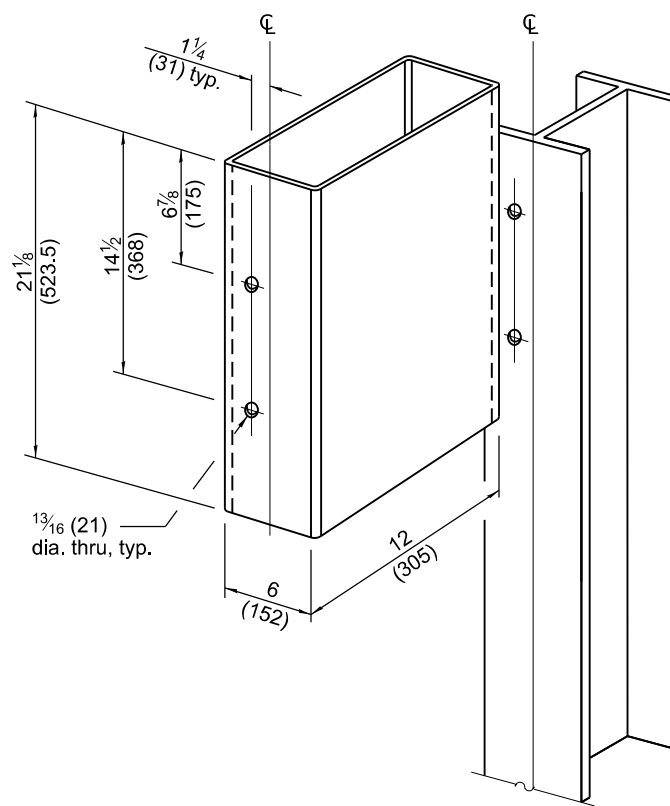
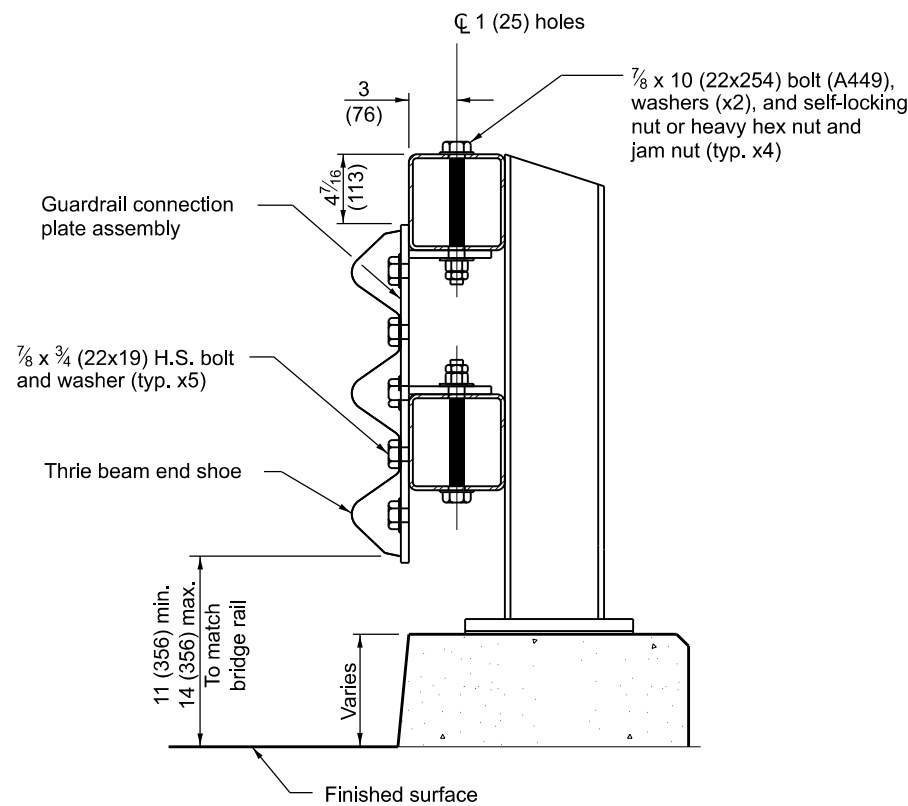
|   |               |
|---|---------------|
|   |               |
| APPROVED <u>January 1, 2023</u><br><br>ENGINEER OF SAFETY PROG. AND ENGINEERING | ISSUED 1-1-23 |
| APPROVED <u>January 1, 2023</u><br><br>ENGINEER OF DESIGN AND ENVIRONMENT       |               |

| DATE   | REVISIONS     |
|--------|---------------|
| 1-1-23 | New Standard. |
|        |               |
|        |               |
|        |               |
|        |               |
|        |               |

## TRAFFIC BARRIER TERMINAL, TYPE 14

(Sheet 1 of 3)

STANDARD 631066



**TRAFFIC BARRIER  
TERMINAL, TYPE 14**

(Sheet 2 of 3)

**STANDARD 631066**



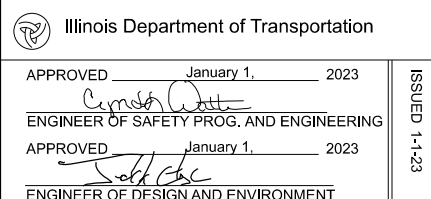
Front View (Mirror for opposite end)



(Mirror for opposite end)



Back View (Thrie beam end shoe not shown for clarity)



# TRAFFIC BARRIER TERMINAL, TYPE 14

(Sheet 3 of 3)

## STANDARD 631066