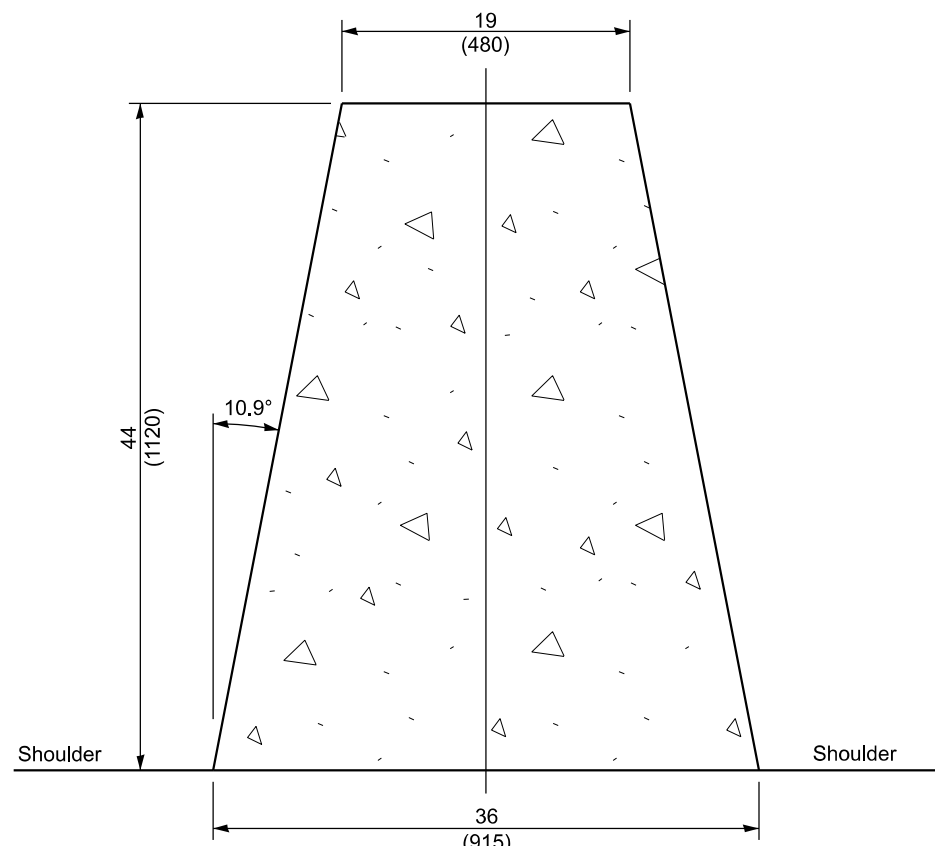
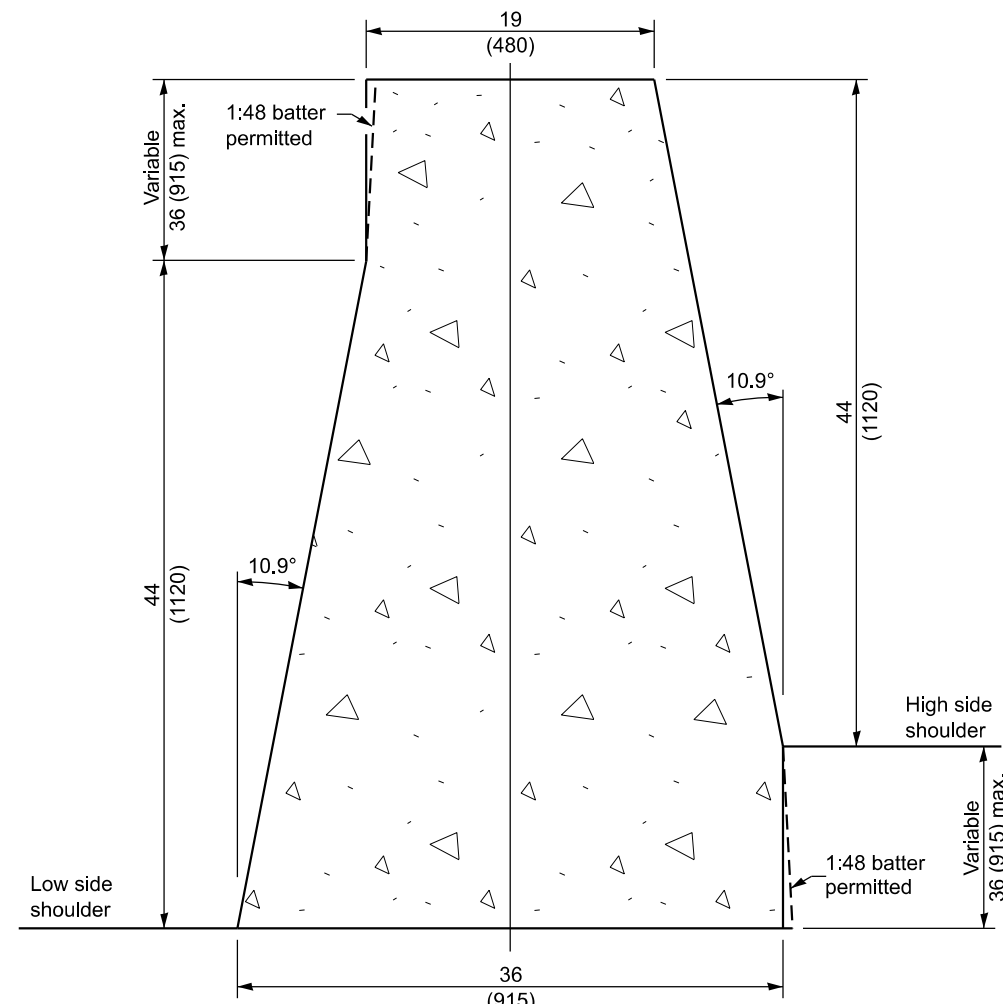


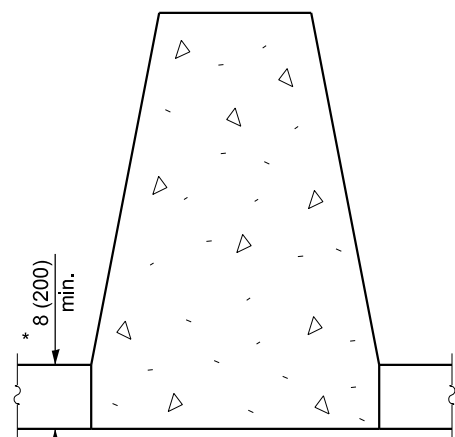
**NEW PCC BASE w/ KEYWAY**



**TYPICAL CROSS-SECTION**

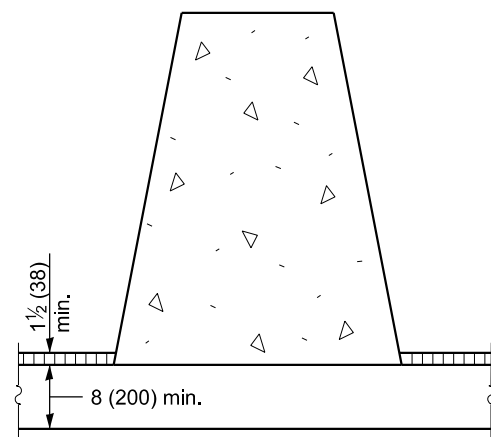


**VARIABLE CROSS-SECTION**

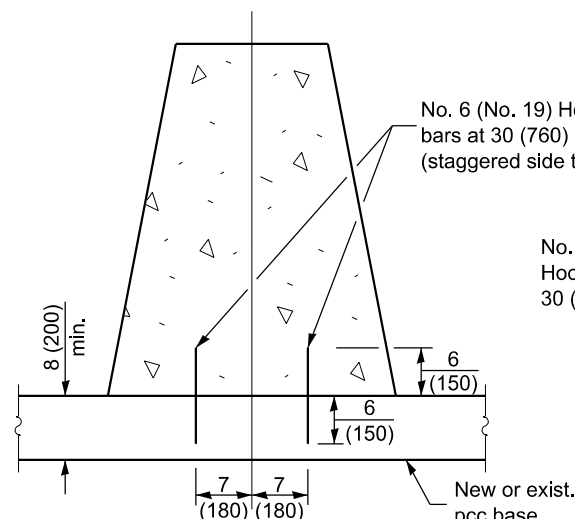


**NEW MONOLITHIC PCC BASE**

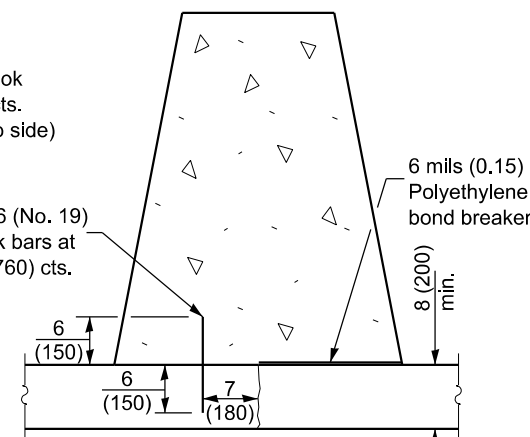
\* This dimension shall be 10 (250) min. when the barrier is confined by earth.



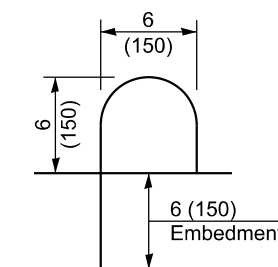
**NEW OR EXISTING HMA / PCC BASE  
w/ HMA OVERLAY CONFINEMENT**



**NEW OR EXISTING PCC BASE  
w/ HOOK BARS**



**EXISTING PCC BASE  
WITH LONGITUDINAL JOINT**



**HOOK BAR DETAIL  
(Side View)**

**GENERAL NOTES**

The Variable Cross-Section shall be used when there is a difference in base elevation between the two sides of the barrier.

See standard 836011 for additional light pole foundation details where required in concrete barrier.

All dimensions are in inches (millimeters) unless otherwise shown.

**FIVE ANCHORING METHODS**

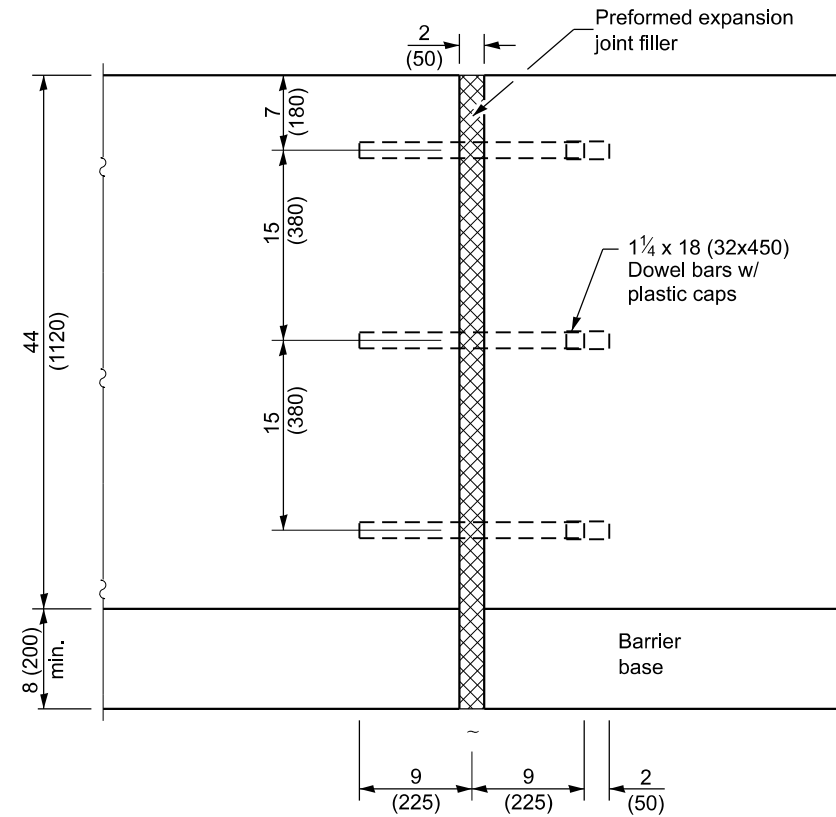
DATE	REVISIONS
1-1-21	Revised Typical and Variable Cross-Sections. Added keyway anchor method and hook bars.
1-1-19	Revised from F-shape to constant slope, increased height, and renamed standard.

**CONCRETE BARRIER,  
DOUBLE FACE,  
44 in. (1120 mm) HEIGHT**

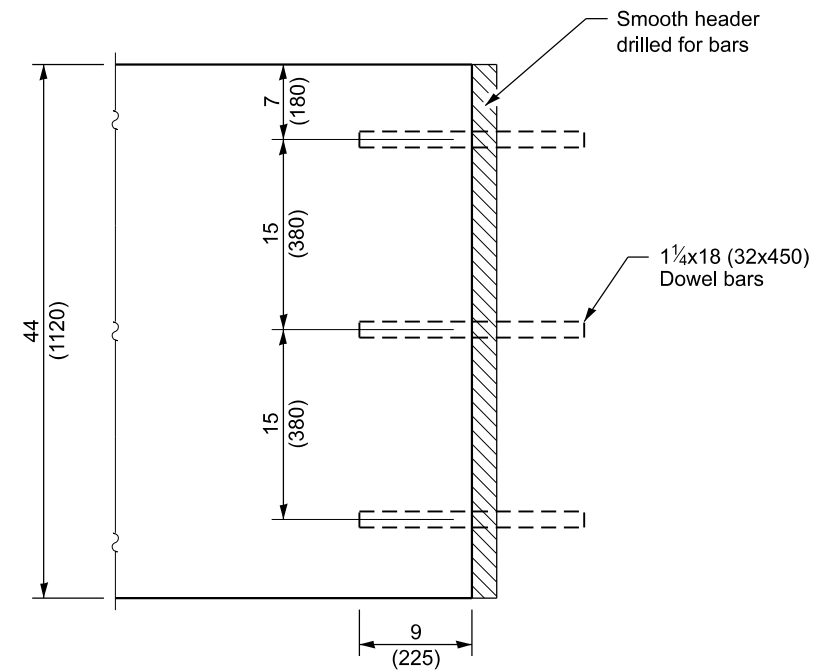
(Sheet 1 of 2)

**STANDARD 637006-05**

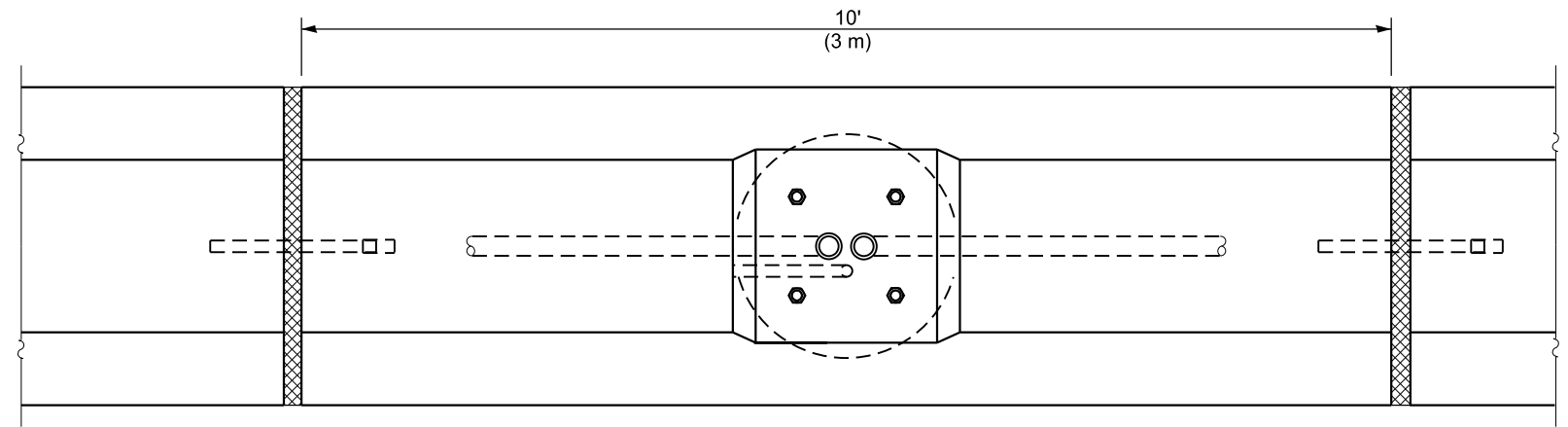
Illinois Department of Transportation	
APPROVED January 1, 2021 	ISSUED 1-1-97
ENGINEER OF POLICY AND PROCEDURES	
APPROVED January 1, 2021 	
ENGINEER OF DESIGN AND ENVIRONMENT	



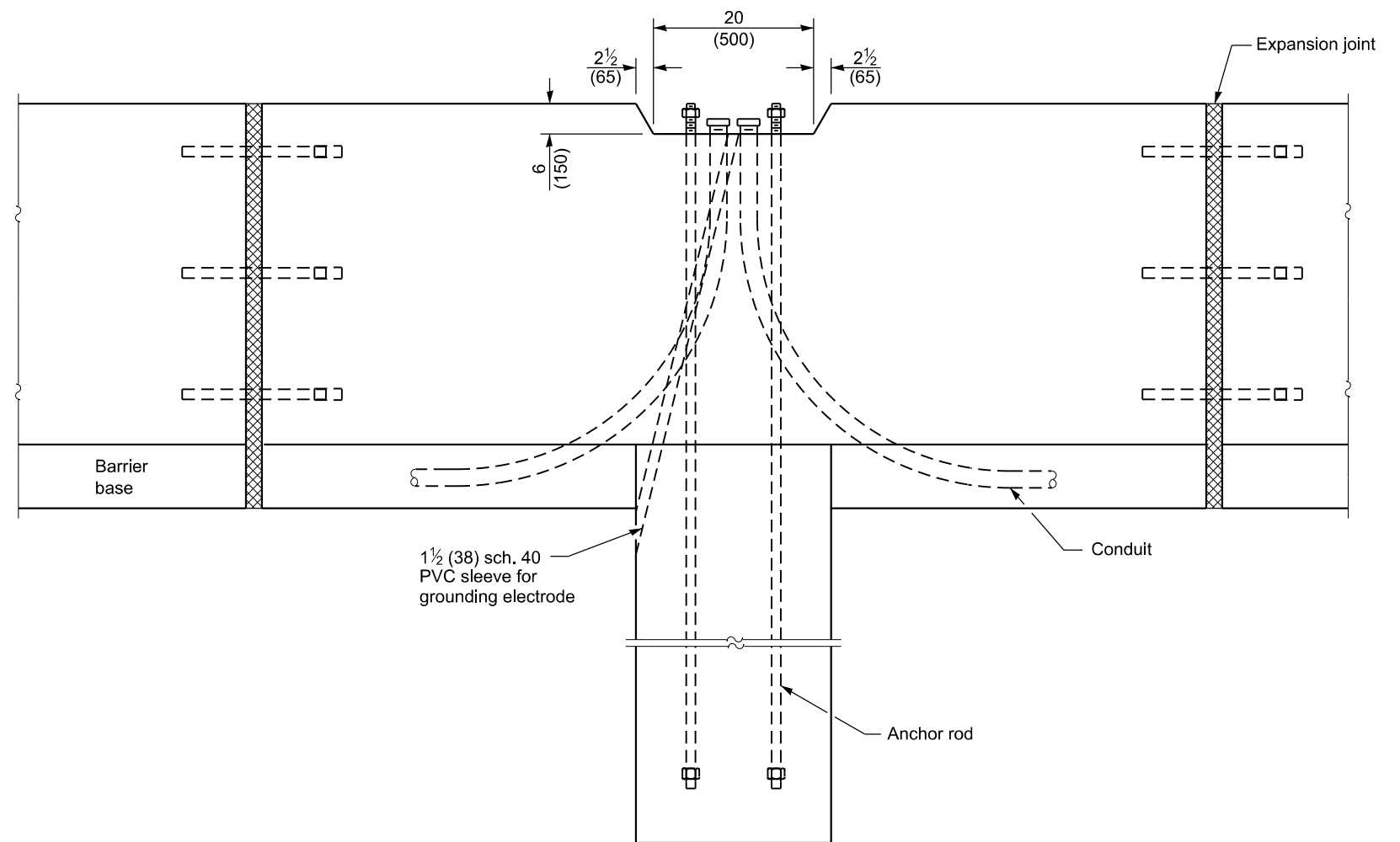
**EXPANSION JOINT**



**CONSTRUCTION JOINT**



**PLAN AT LIGHTING FOUNDATION**



**ELEVATION AT LIGHTING FOUNDATION**