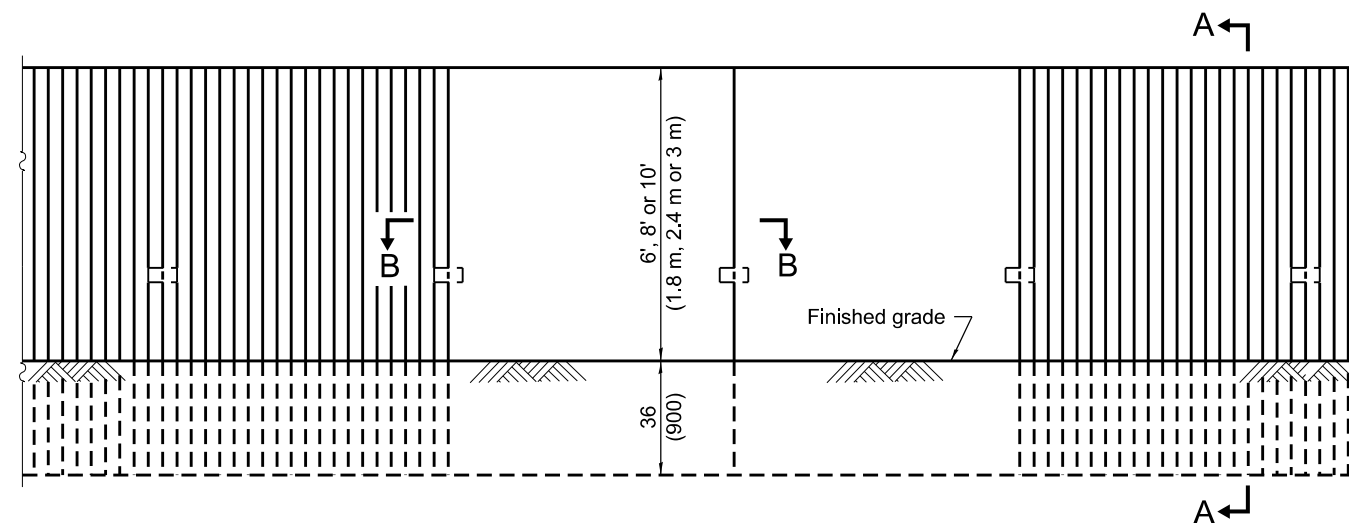
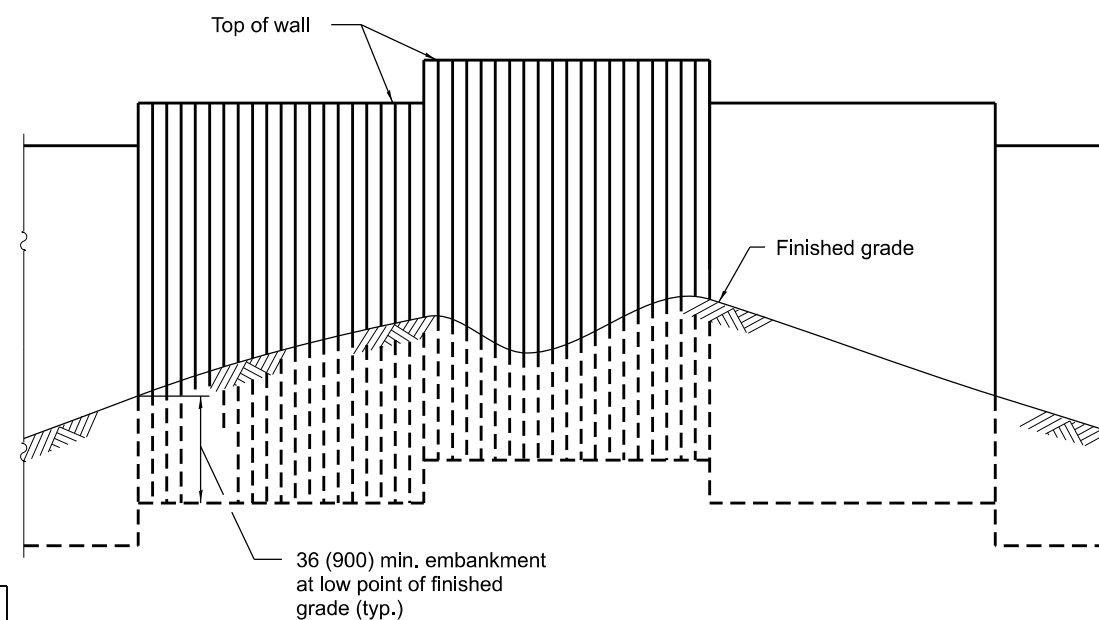


Each alternate pair of panels shall have a textured surface finish as shown, and shall be alternated with pairs having a smooth finish. The intersection of every two panels having the same finish shall point toward the road as shown.

PLAN

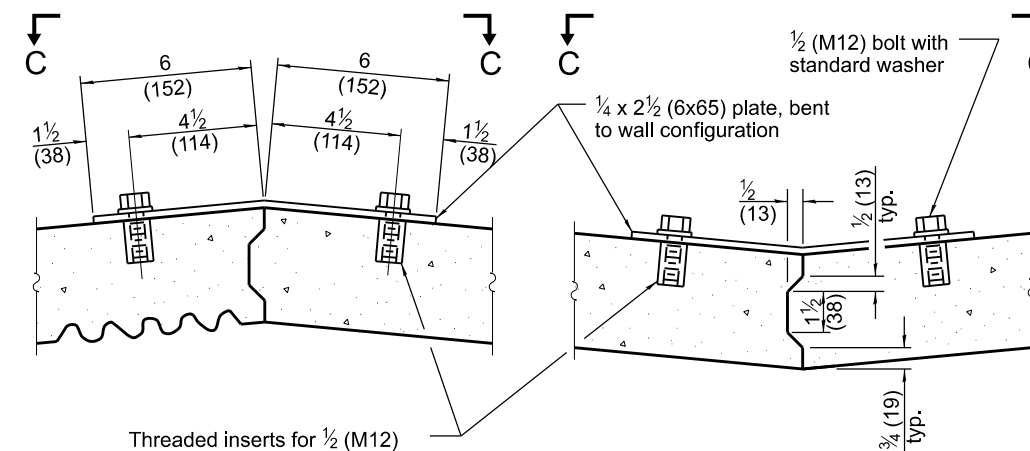


ELEVATION



ELEVATION

(Showing installation of wall in irregular ground)

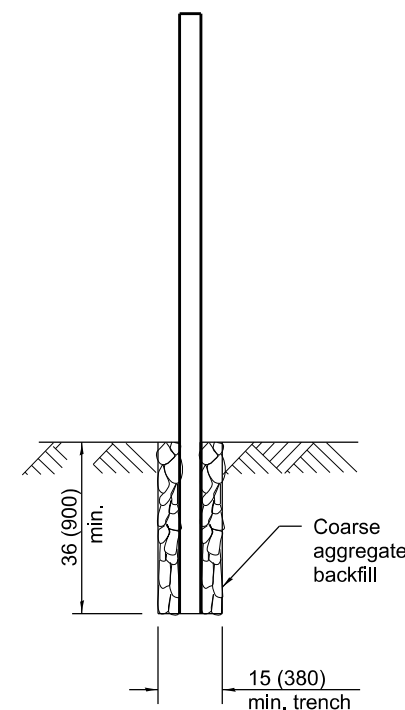


Threaded inserts for 1/2 (M12) bolts, precast or field drilled, as necessary, into panels.

Showing typical metal band connector dimensions

Showing typical shear key dimensions

SECTION B-B



SECTION A-A

GENERAL NOTES

Loading for 80 mph (130 km/h) wind with 30% gust factor, normal to wall.

ALLOWABLE STRESSES:

Concrete: $f'_c = 3,500$ psi (24 MPa)
 $f'_{ci} = 2,250$ psi (15 MPa)

Prestressing Steel: $f'_s = 270,000$ psi (1860 MPa)
 $f_{si} = 189,000$ psi (1300 MPa)

Reinforcing Steel: $f'_y = 40,000$ psi min. (270 MPa)

Structural Steel: $f_s = 20,000$ psi (138 MPa)

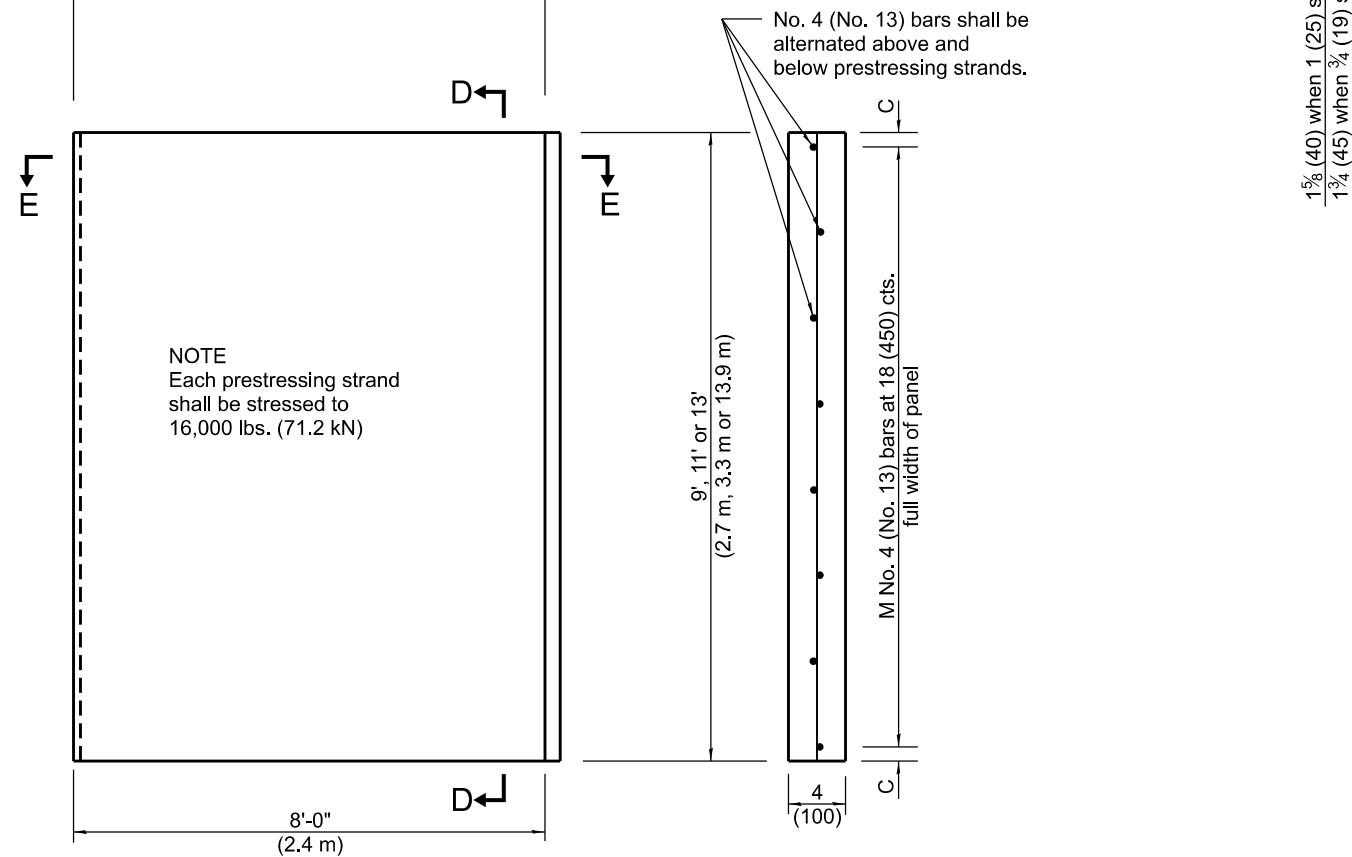
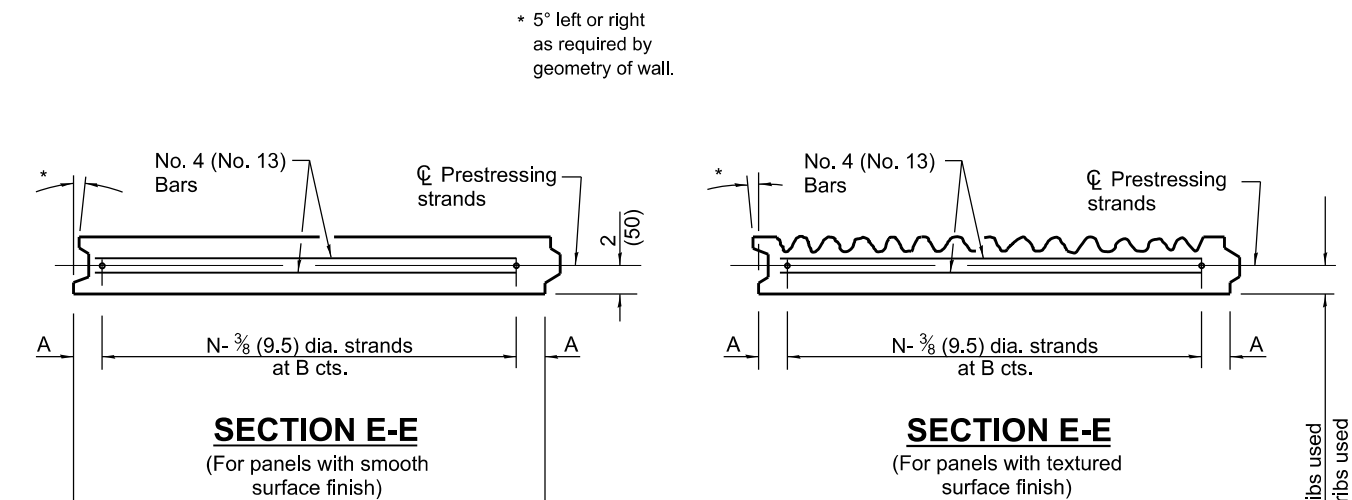
Minimum allowable soil bearing pressure: $= 1.25$ tsf (120 kPa)

All dimensions are in inches (millimeters) unless otherwise shown.

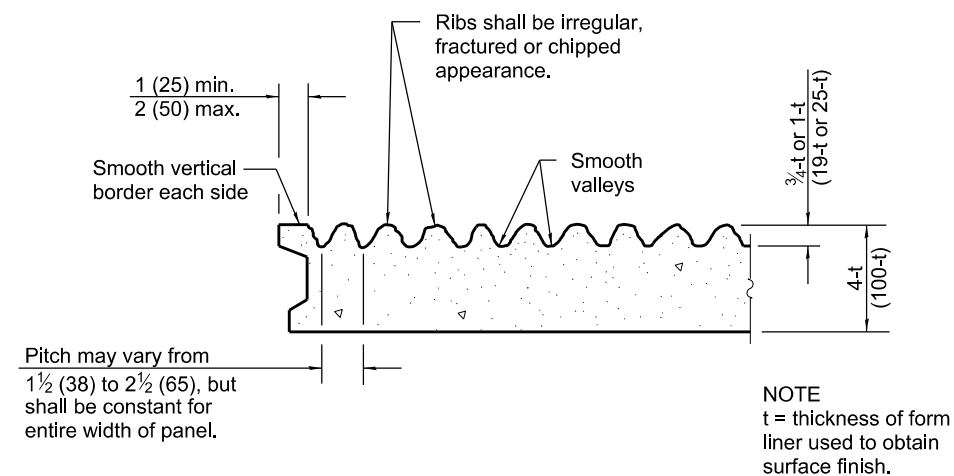
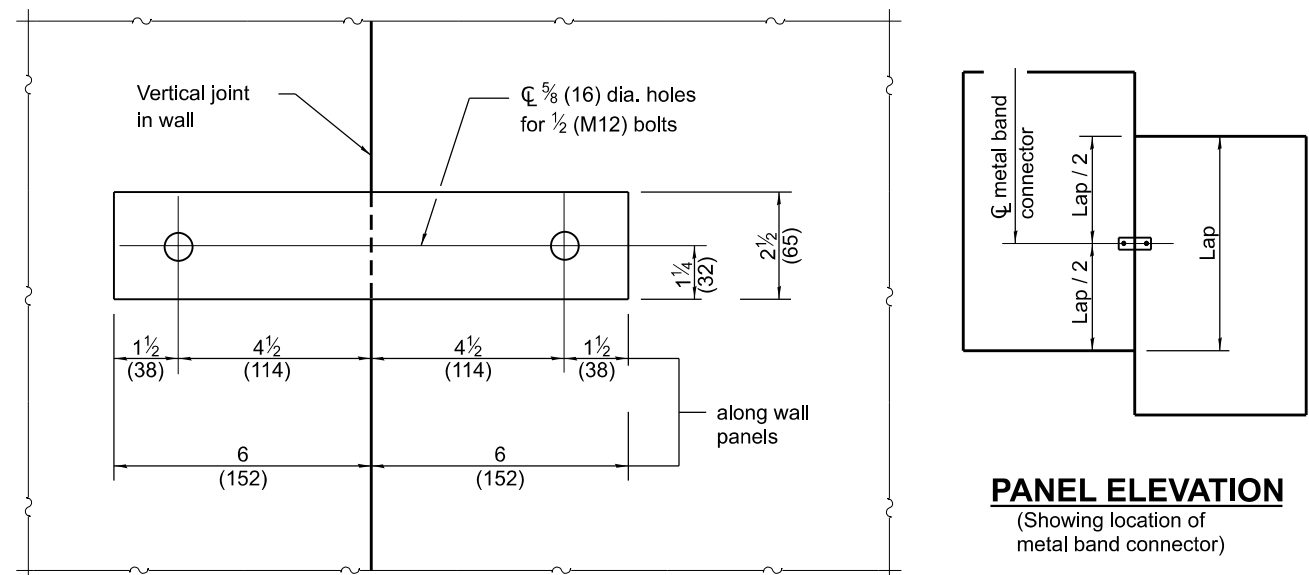
Illinois Department of Transportation	
APPROVED January 1, 2009 <i>Ralph E. Anderson</i> ENGINEER OF BRIDGES AND STRUCTURES	ISSUED 1-1-97
APPROVED January 1, 2009 <i>Ken E. Han</i> ENGINEER OF DESIGN AND ENVIRONMENT	

DATE	REVISIONS
1-1-09	Switched units to English (metric).
1-1-07	Soft converted metric reinforcement bars & corrected dimensions.

SIGHT SCREEN PRECAST PRESTRESSED CONCRETE PANEL WALL	
(Sheet 1 of 2)	
STANDARD 639001-02	



STRAND and REINFORCEMENT LAYOUT



Nominal Panel Size	A	N	B	C	M
8'-0" x 9'-0" (2.4 m x 2.7 m)	6 (150)	8	12 (300)	9 (225)	6
8'-0" x 11'-0" (2.4 m x 3.3 m)	3 (75)	11	9 (225)	3 (75)	8
8'-0" x 13'-0" (2.4 m x 3.9 m)	3 (75)	16	6 (150)	6 (150)	9

SIGHT SCREEN PRECAST PRESTRESSED CONCRETE PANEL WALL

(Sheet 2 of 2)

STANDARD 639001-02