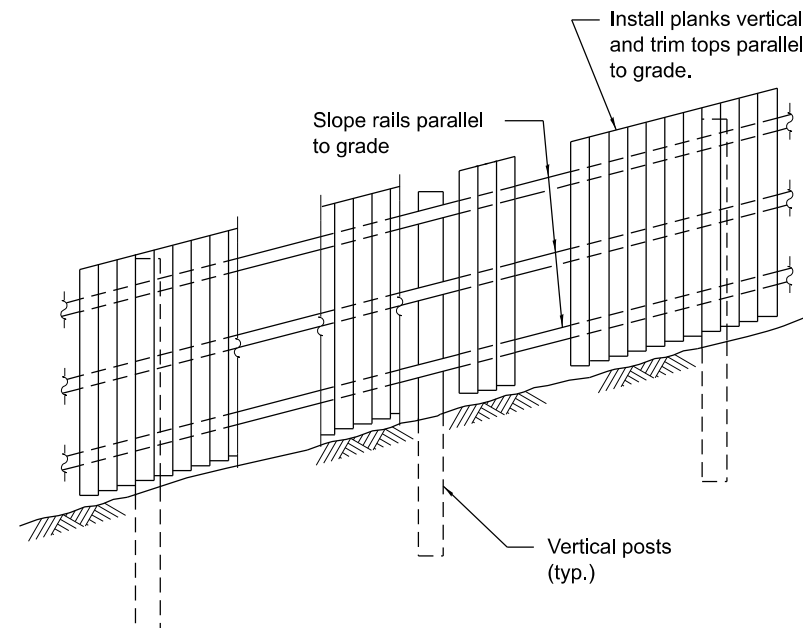
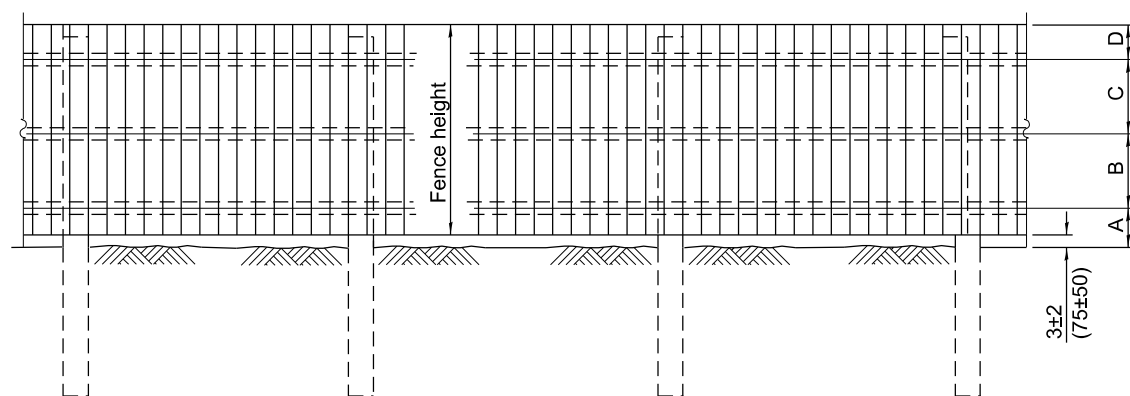


PLAN
(Facing highway)

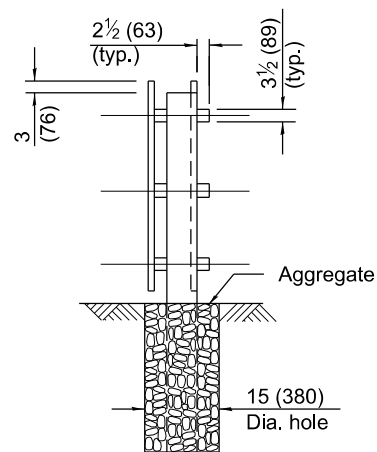
	FENCE HEIGHT	
	6'-0" (1.8 m)	8'-0" (2.4 m)
Post Size (nominal dim.)	6x8 (150x200)	8x8 (200x200)
Post Length	10'-0" (3.0 m)	14'-0" (4.3 m)
Post Embedment	4'-0" (1.2 m)	6'-0" (1.8 m)
A	15 (380)	18 (460)
B	24 (600)	33 (870)
C	24 (600)	33 (870)
D	12 (300)	15 (380)



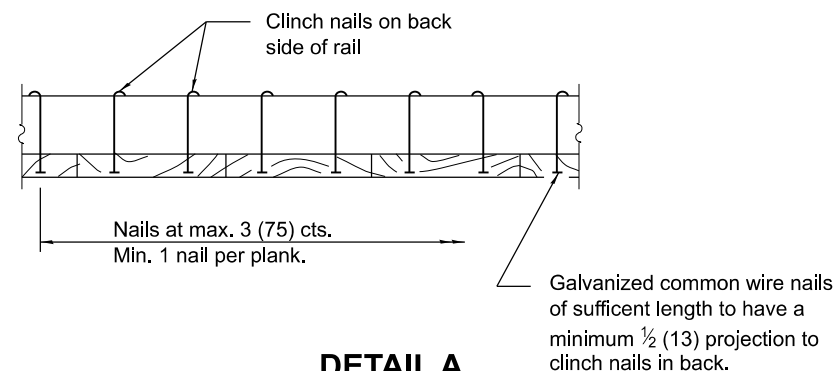
ELEVATION
(Showing treatment with sloping ground)



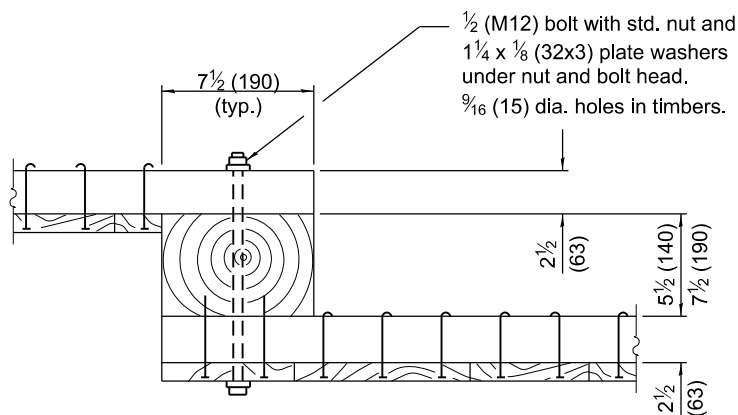
ELEVATION



SEC. A-A



DETAIL A
(Showing typical plank to rail attachment each rail.)



DETAIL B
(Showing typical panel to post connection details)

GENERAL NOTES

Loading was based on 80 mph (130 km/h) with 30% gust factor. Minimum allowable soil pressure = 1.25 tsf (120 kPa).

All dimensions are in inches (millimeters) unless otherwise shown.

DATE	REVISIONS	SIGHT SCREEN WOOD PLANK FENCE TYPE P
1-1-09	Switchd units to English (metric). Changed Section B-B to Detail B.	
1-1-97	Renum. Standard 2367-3. Deleted DN Symbol.	STANDARD 641006-01

Illinois Department of Transportation		ISSUED 1-1-97
APPROVED	January 1, 2009	
 ENGINEER OF BRIDGES AND STRUCTURES		
APPROVED	January 1, 2009	
 ENGINEER OF DESIGN AND ENVIRONMENT		