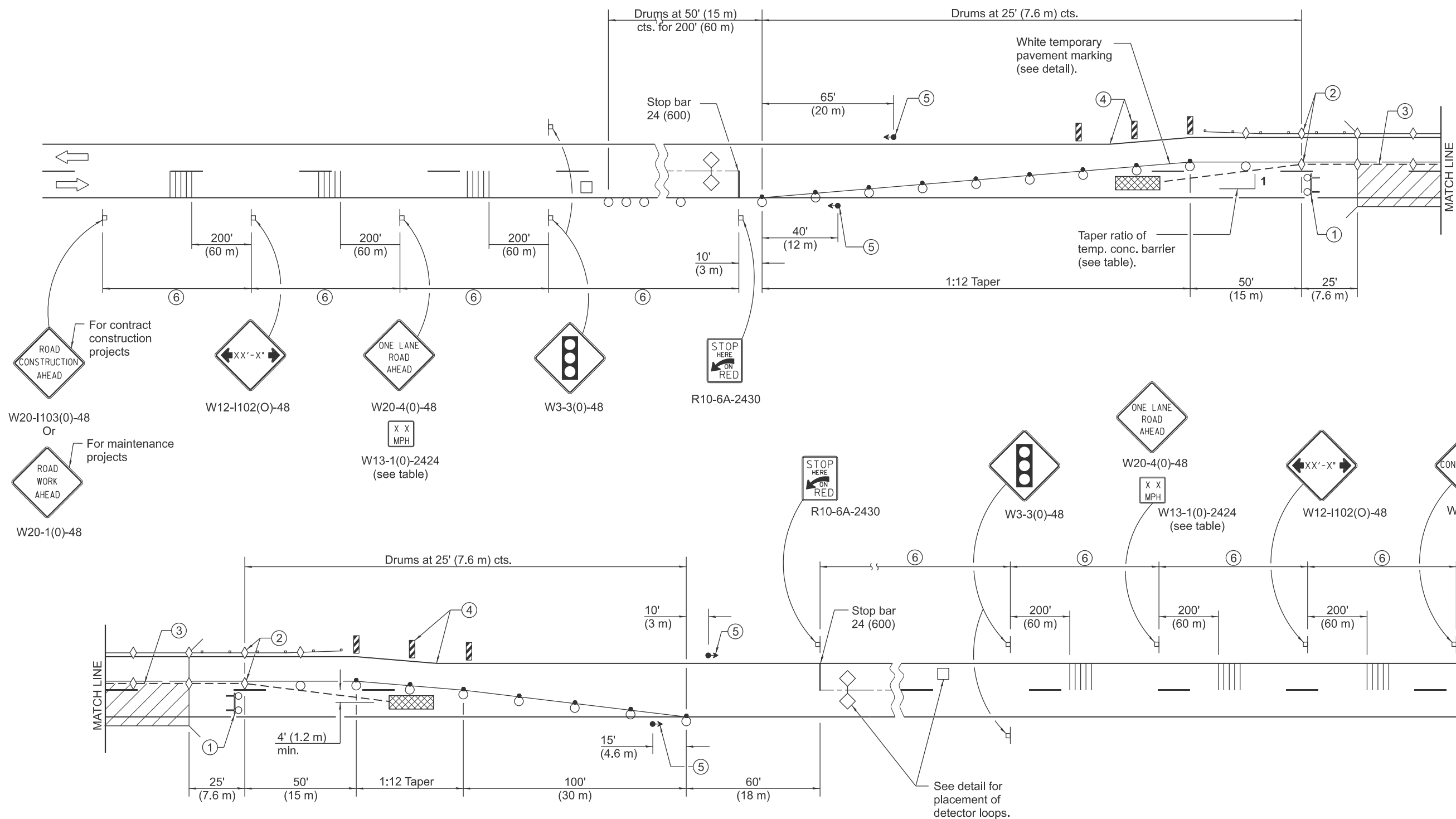


- ① Type III barricade to be placed when no work is being performed.
- ② Guardrail/barrier wall reflectors at 25' (7.6 m) cts. See Standards 704001 & 782006.
- ③ When temp. bridge rail is specified, it shall be connected to the temp. conc. barrier using a traffic barrier terminal Type 11.
- ④ Vertical panels at 25' (7.6 m) cts. throughout lane shift. These devices may be omitted when the guardrail, w/markers, extends to at least this point on the taper.
- ⑤ The edge of the post mounted signal head shall be between 24 (610) and 6' (1.8 m) from edge of shoulder.



**SYMBOLS**

- |   |   |
|---|---|
| Work area                               | Drum with steady burning bi-directional light           |
| Sign                                    | Temporary concrete barrier                              |
| Type III barricade with flashing lights | Temporary rumble strip (when specified)                 |
| Traffic signal                          | Double vertical panel (see detail)                      |
| Detector loops                          | Crystal, bidirectional guardrail/barrier wall reflector |
| Impact attenuator                       | Drum  |

⑥

SIGN SPACING	
Posted Speed	Sign Spacing
55	500' (150 m)
50-45	350' (100 m)
<45	200' (60 m)

Illinois Department of Transportation

APPROVED January 1, 2025  
ENGINEER OF SAFETY PROG. AND ENGINEERING

APPROVED January 1, 2025  
ENGINEER OF DESIGN AND ENVIRONMENT

ISSUED 1-1-97

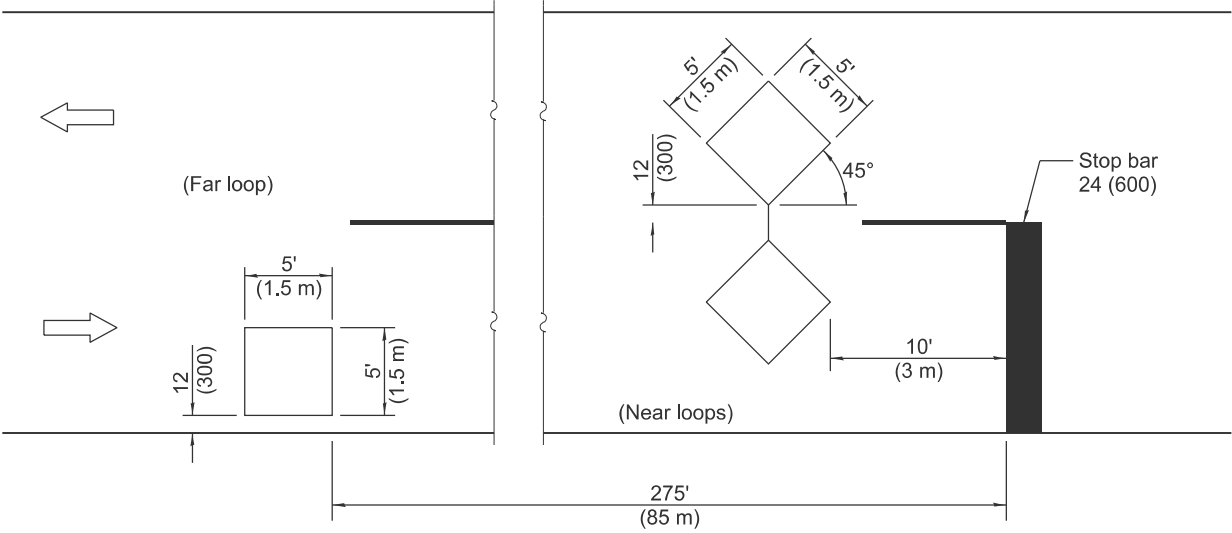
DATE	REVISIONS
1-1-25	Added SIGN SPACING table to revise distances per posted speed.
1-1-20	Revised from F-shape to constant slope parapet.

See Sheet 2 for GENERAL NOTES

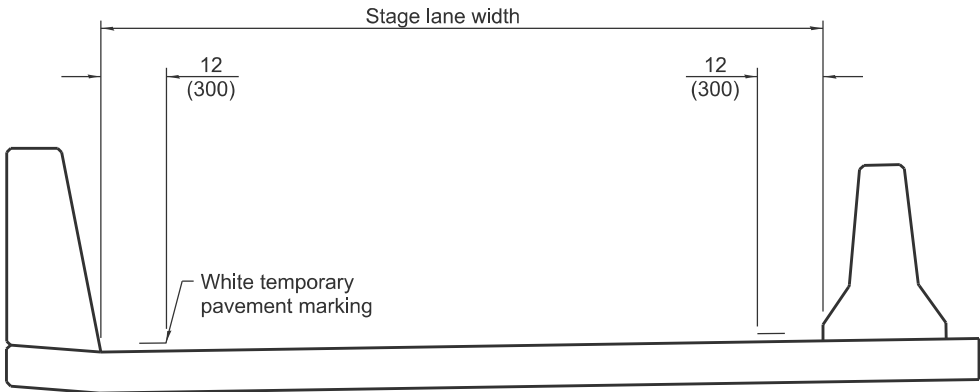
**LANE CLOSURE, 2L, 2W,  
BRIDGE REPAIR WITH BARRIER**

(Sheet 1 of 2)

**STANDARD 701321-19**



**DETECTOR LOOPS**

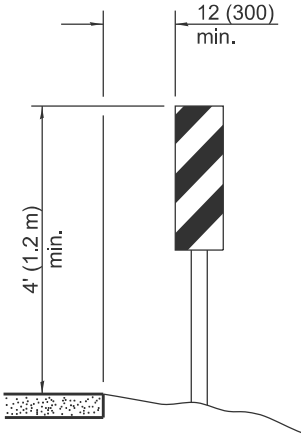


**TEMPORARY PAVEMENT MARKING**

TRAFFIC SIGNAL SEQUENCE						
PHASE	A			B		
INTERVAL	1	2	3	4	5	6
NORTHBOUND OR EASTBOUND	G	Y	R	R	R	R
SOUTHBOUND OR WESTBOUND	R	R	R	G	Y	R

TEMPORARY CONCRETE BARRIER	
NORMAL POSTED SPEED	TAPER RATIO
40 mph AND ABOVE	12:1
BELOW 40 mph	8:1

ADVISORY SPEED LIMIT	
NORMAL POSTED SPEED	ADVISORY SPEED
55 - 45 mph	40 mph
40 mph	35 mph
35 - 30 mph	30 mph



**VERTICAL PANELS**

(Post mounted, one each side)

**GENERAL NOTES**

This Standard is used where, at any time, any vehicle, equipment, workers, or their activities will encroach on one lane of a bridge. Traffic signals and a positive barrier are required.

Traffic signals shall be operational only when all traffic controls are in place. When traffic signals are not in operation, flaggers shall be used and traffic control shall conform to Standard 701201 or 701206.

Temporary concrete barrier shall be according to Standard 704001.


Existing or temporary pavement markings shall be on both sides of open lane from stop bar to stop bar.

All dimensions are in inches (millimeters) unless otherwise shown.

**LANE CLOSURE, 2L, 2W,  
BRIDGE REPAIR WITH BARRIER**

(Sheet 2 of 2)

**STANDARD 701321-19**



Illinois Department of Transportation

APPROVED January 1, 2025

ENGINEER OF SAFETY PROG. AND ENGINEERING

APPROVED January 1, 2025

ENGINEER OF DESIGN AND ENVIRONMENT

ISSUED 1-1-97