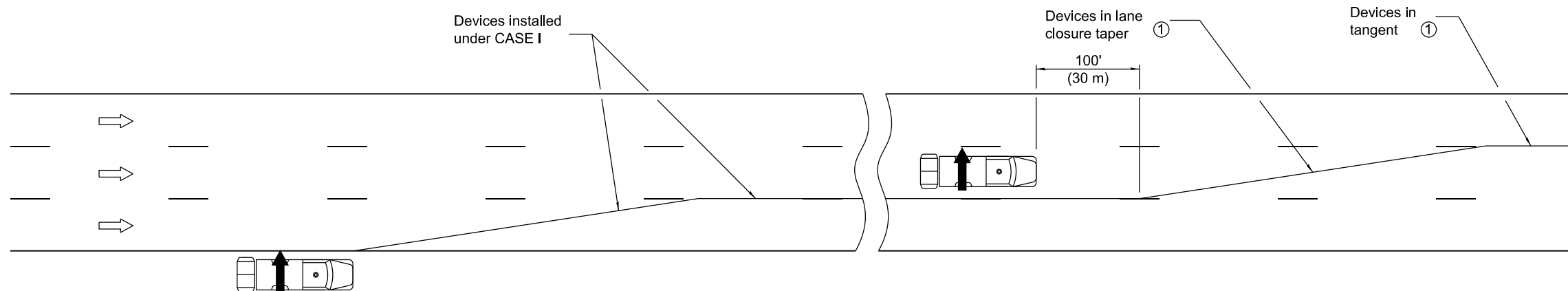


① See plans or appropriate Standard for delineating devices, spacing and length of taper/tangent.

**CASE I**

CASE I depicts the setup of delineating devices for a single outside lane closure.



**CASE II**

CASE II depicts the setup of delineating devices for a two lane closure. The single lane closure device setup as depicted in CASE I shall be performed prior to the setup for the second lane closure.

**GENERAL NOTES**


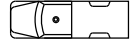

This Standard is used for setup and removal of lane closures on freeways/expressways having ADT greater than 25,000.

Trucks with arrow boards and truck-mounted-attenuators shall be in place as shown for the setup and removal of the lane closure taper(s) and the first 100' (30 m) of channelizing devices in the tangent(s).

This Standard is also applicable when work is being performed in the left lane(s) or on the median shoulder. Under these conditions arrow board indications shall be directed to the right.

All dimensions are in inches (millimeter) unless otherwise shown.

**SYMBOLS**

-  Arrow board
-  Truck with flashing amber light
-  Truck/Trailer mounted attenuator

DATE	REVISIONS
4-1-16	Added trailer option for attenuator symbol.
1-1-14	New Standard.

**TRAFFIC CONTROL  
SETUP AND REMOVAL  
FREEWAY/EXPRESSWAY**

**STANDARD 701428-01**

Illinois Department of Transportation

APPROVED                      January 1, 2016  
*Amelia A. Davis*  
 ENGINEER OF SAFETY ENGINEERING

APPROVED                      January 1, 2016  
  
 ENGINEER OF DESIGN AND ENVIRONMENT

ISSUED 1-1-97