

WORK ZONE  
W21-III5(0)-3618

SPEED LIMIT  
R2-1-3648  
**45**

PHOTO ENFORCED  
R10-1108p-3618

\$XXX FINE MINIMUM  
R2-1106p-3618

END WORK ZONE  
G20-1103-6036  
SPEED LIMIT

NEXT X MILES  
W7-3a-2418  
①

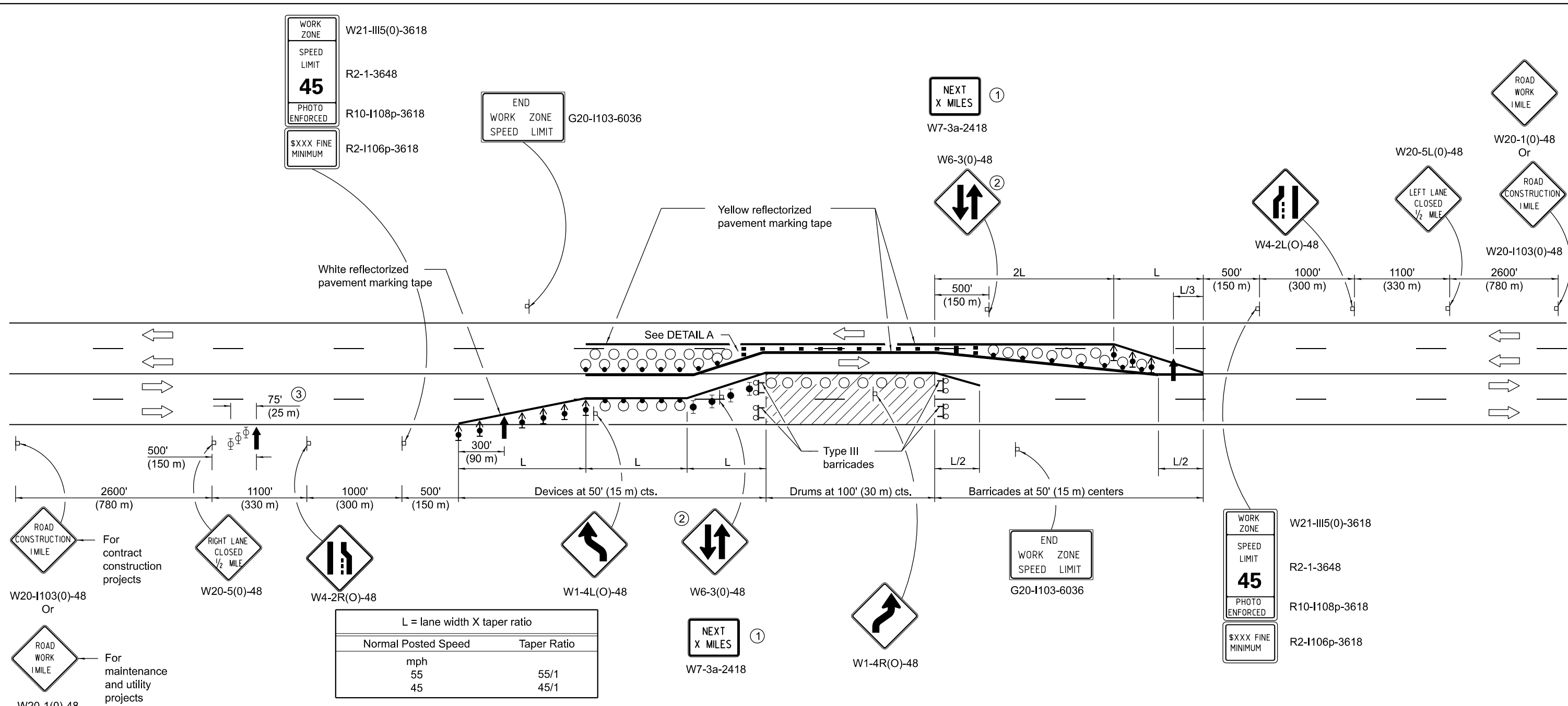
W6-3(0)-48  
②

W4-2L(0)-48

W20-5L(0)-48  
LEFT LANE CLOSED 1/2 MILE

ROAD WORK 1 MILE  
W20-1(0)-48

Or  
ROAD CONSTRUCTION 1 MILE  
W20-1103(0)-48



L = lane width X taper ratio

Normal Posted Speed	Taper Ratio
mph 55	55/1
45	45/1

ROAD CONSTRUCTION 1 MILE  
W20-1103(0)-48  
Or  
ROAD WORK 1 MILE  
W20-1(0)-48

For contract construction projects

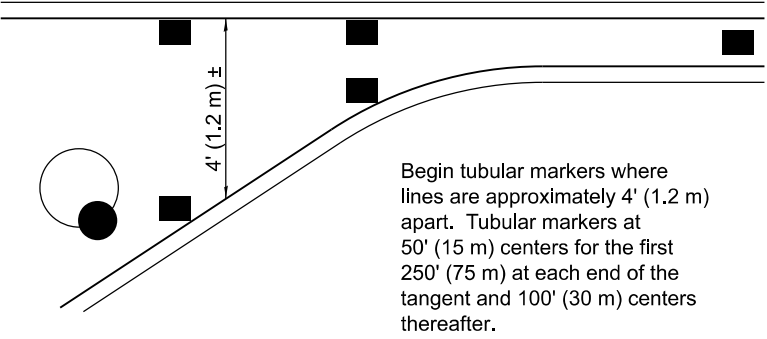
For maintenance and utility projects

WORK ZONE  
W21-III5(0)-3618

SPEED LIMIT  
R2-1-3648  
**45**

PHOTO ENFORCED  
R10-1108p-3618

\$XXX FINE MINIMUM  
R2-1106p-3618



**DETAIL A**

**SYMBOLS**

- ↑ Arrow board
- ▨ Work area
- ⊥ Sign
- Drum with steady burn monodirectional light
- ↑ Direction indicator barricade with steady burn monodirectional light
- Type II barricade with steady burn monodirectional light
- ⊕ Type II barricade, drum or vertical barricade with monodirectional flashing light
- Tubular marker
- ⊕ Type III barricade with flashing monodirectional lights
- Drum

- ① Shall be repeated every 1 mile (1.6 km).
- ② Shall be repeated every 1 mile (1.6 km) in each direction in the tangent section unless concrete barrier is used.
- ③ Three Type II barricades, drums or vertical barricades at 25' (8 m) centers.

**GENERAL NOTES**

This Standard is used where at any time, any vehicle, equipment, workers or their activities require the closure of two adjacent lanes and a temporary crossover is provided by making use of one lane of pavement normally used by opposing flow of traffic and flexible delineators are used to separate the opposing traffic.

Cones may be substituted for flexible delineators during daytime operations at half the spacing.

All dimensions are in inches (millimeters) unless otherwise shown.

Illinois Department of Transportation

APPROVED January 1, 2018  
*Paul L. ...*  
ENGINEER OF SAFETY PROG. AND ENGINEERING

APPROVED January 1, 2018  
*Maureen M. ...*  
ENGINEER OF DESIGN AND ENVIRONMENT

ISSUED 1-1-97

DATE	REVISIONS
1-1-18	Omitted lights on drums in tangent for westbound traffic and at work area.
1-1-17	Replaced W18-1100 plaque with W7-3a plaque. Changed flexible delineator to tubular marker.

**LANE CLOSURE, MULTILANE, UNDIV. WITH CROSSOVER, FOR SPEEDS ≥ 45 MPH TO 55 MPH**

**STANDARD 701431-13**