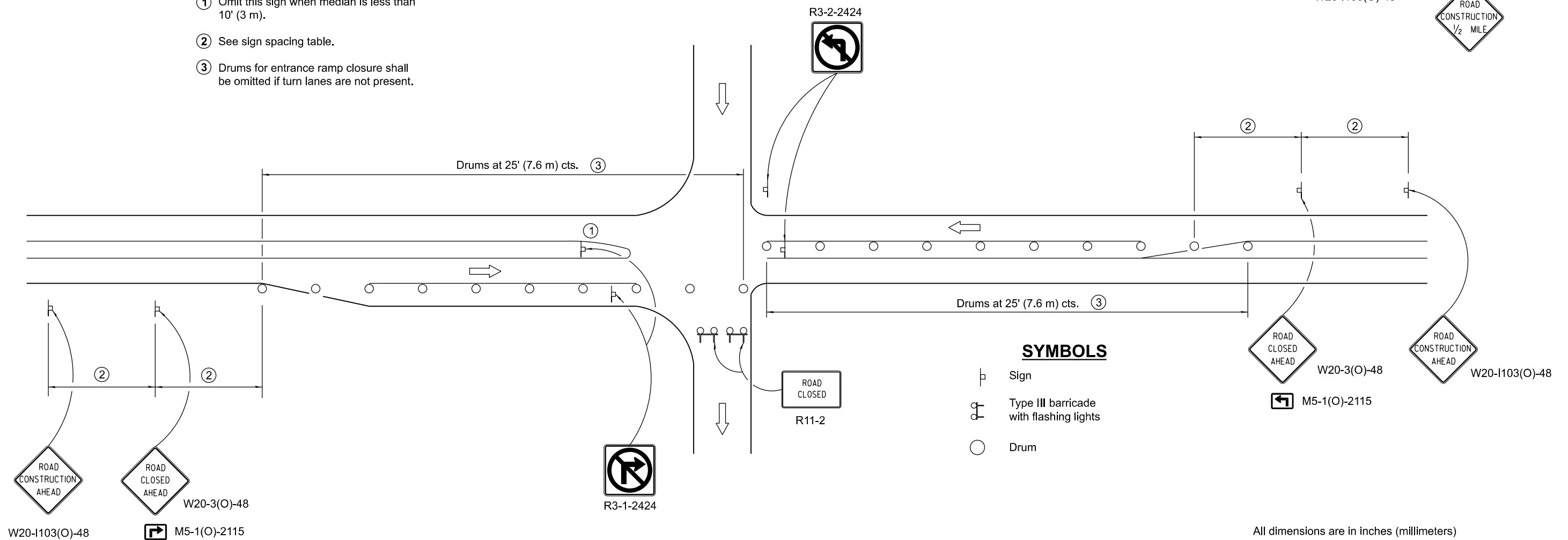


## EXIT RAMP CLOSURE

- ① Omit this sign when median is less than 10' (3 m).
- ② See sign spacing table.
- ③ Drums for entrance ramp closure shall be omitted if turn lanes are not present.



## ENTRANCE RAMP CLOSURE

SIGN SPACING	
Posted Speed	Sign Spacing
55	500' (150 m)
50 - 45	350' (100 m)
< 45	200' (60 m)

DATE	REVISIONS
1-1-18	Omitted lights from drums.
1-1-17	Added flashing lights to
	Type III barricade.

All dimensions are in inches (millimeters) unless otherwise shown.

## RAMP CLOSURE FREEWAY/EXPRESSWAY

**STANDARD 701451-05**