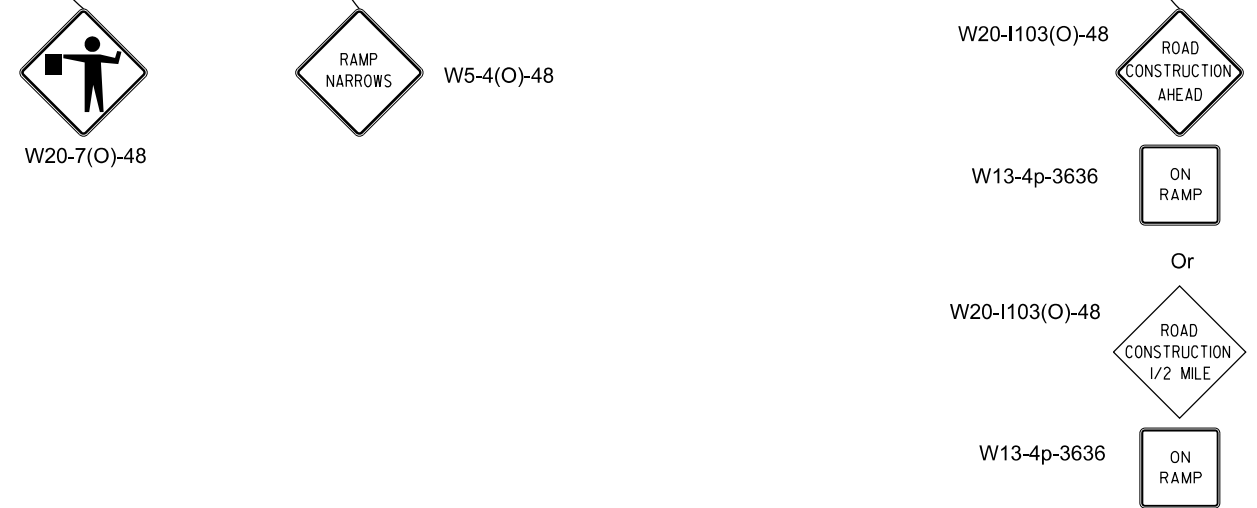


PARTIAL EXIT RAMP CLOSURE



SYMBOLS

- Sign
- Type III barricade with flashing lights
- Drum with steady burning light
- Work area
- Flagger with traffic control sign
- Drum

All dimensions are in inches (millimeters) unless otherwise shown.

Illinois Department of Transportation

APPROVED January 1, 2018

 ENGINEER OF SAFETY PROG. AND ENGINEERING

APPROVED January 1, 2018

 ENGINEER OF DESIGN AND ENVIRONMENT

ISSUED 1-1-09

DATE	REVISIONS
1-1-18	Omitted lights on drums in tangent.
1-1-17	Added flashing lights to Type III barricade.

PARTIAL EXIT RAMP CLOSURE, FREEWAY/EXPRESSWAY

STANDARD 701456-05