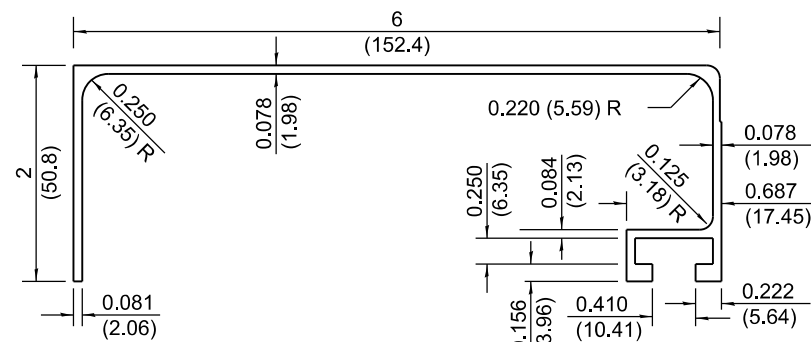
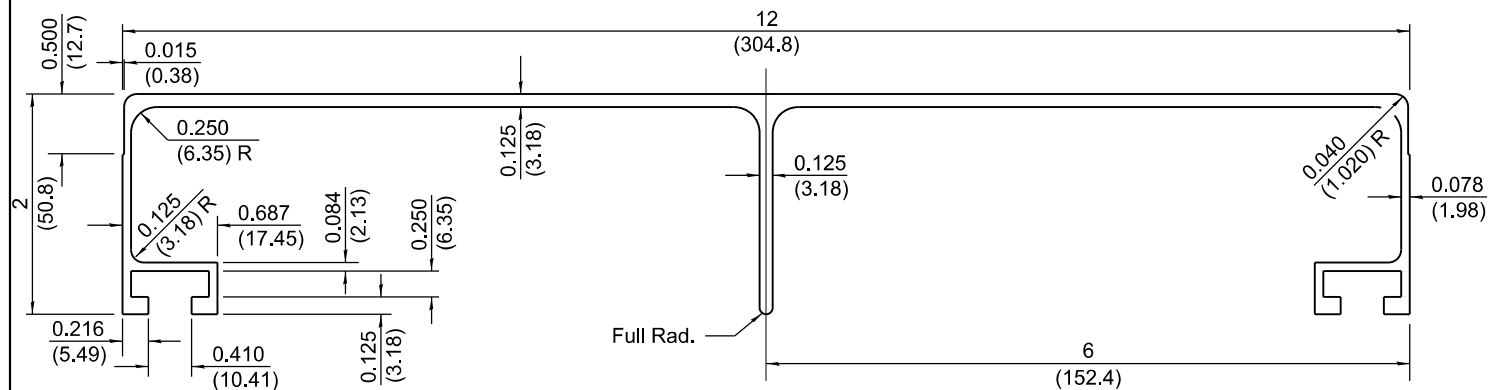


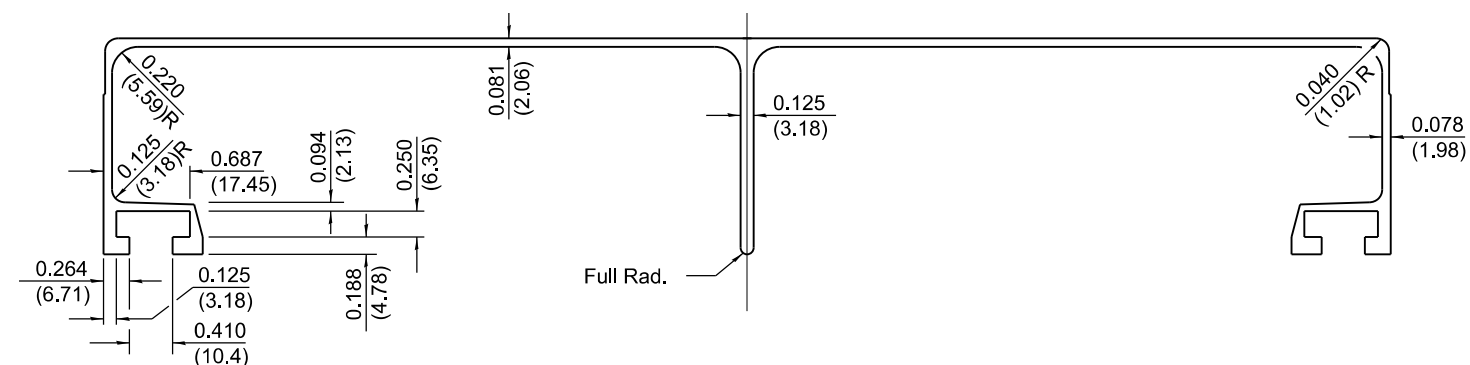
FACE OF SIGN PANEL



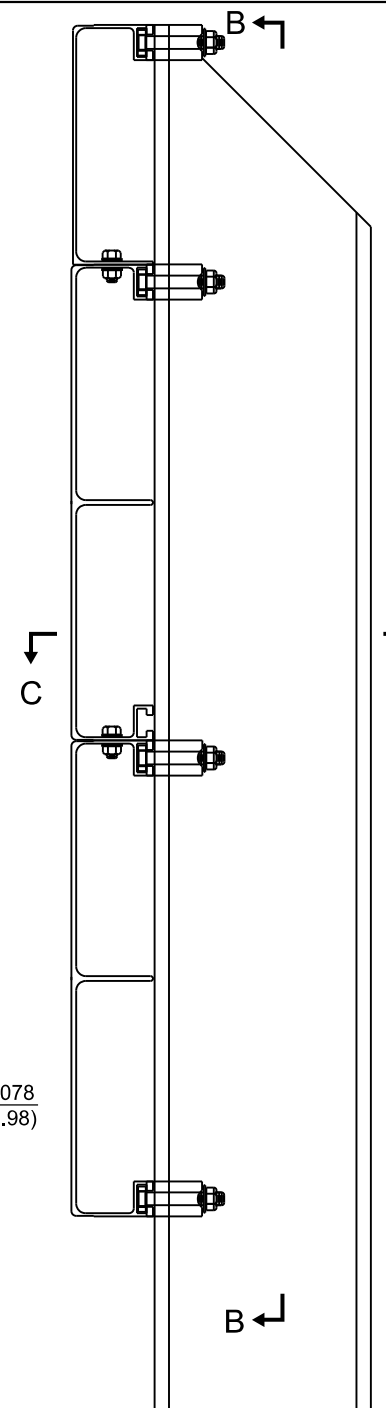
6 (150) PANEL



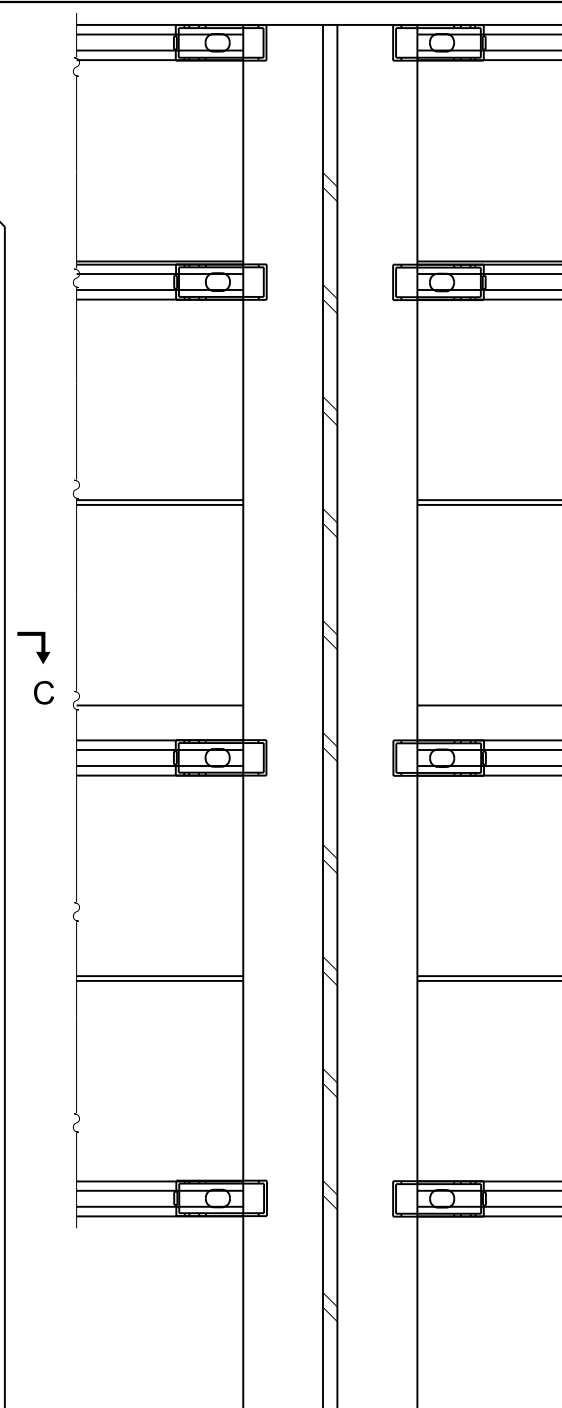
TYPE B SIGN PANEL



TYPE C SIGN PANEL

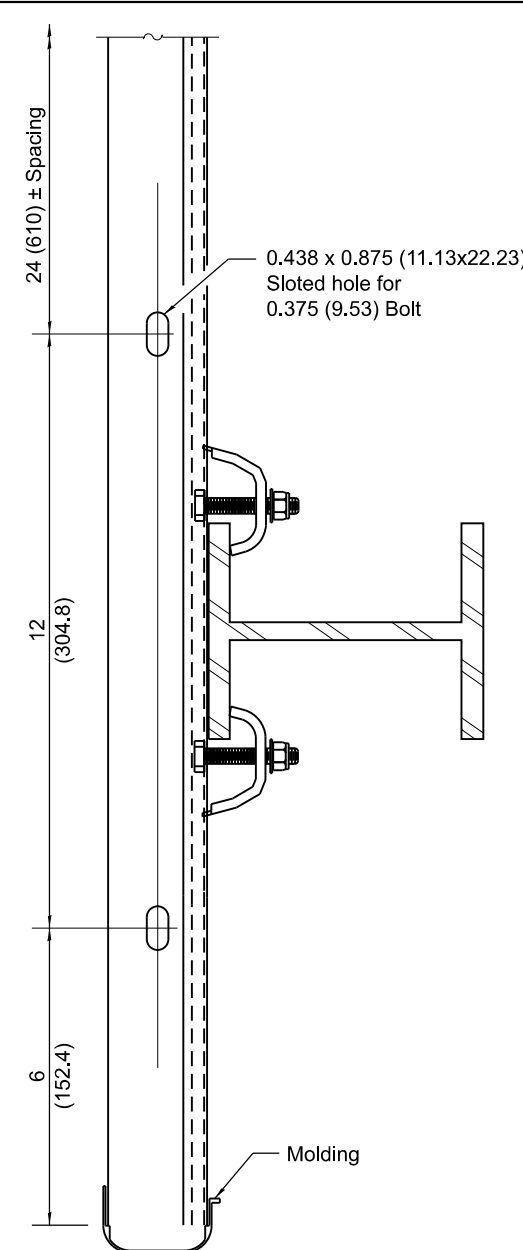


SECTION A-A

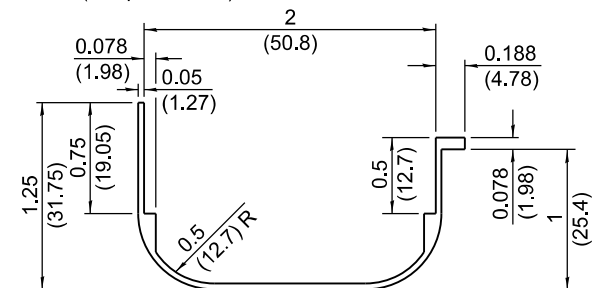


SECTION B-B

(Provide two post clips top and bottom. Alternate at interior panel joints on ground-mounted signs, and provide two clips at all panel joints on over-head mounted signs.)



SECTION C-C
(w/o panel bolts)



SIGN MOLDING

(Color shall match sign face material. To be riveted to sign panel at 24 (600) O.C.)

Illinois Department of Transportation

APPROVED January 1, 2022

ENGINEER OF OPERATIONS

APPROVED January 1, 2022

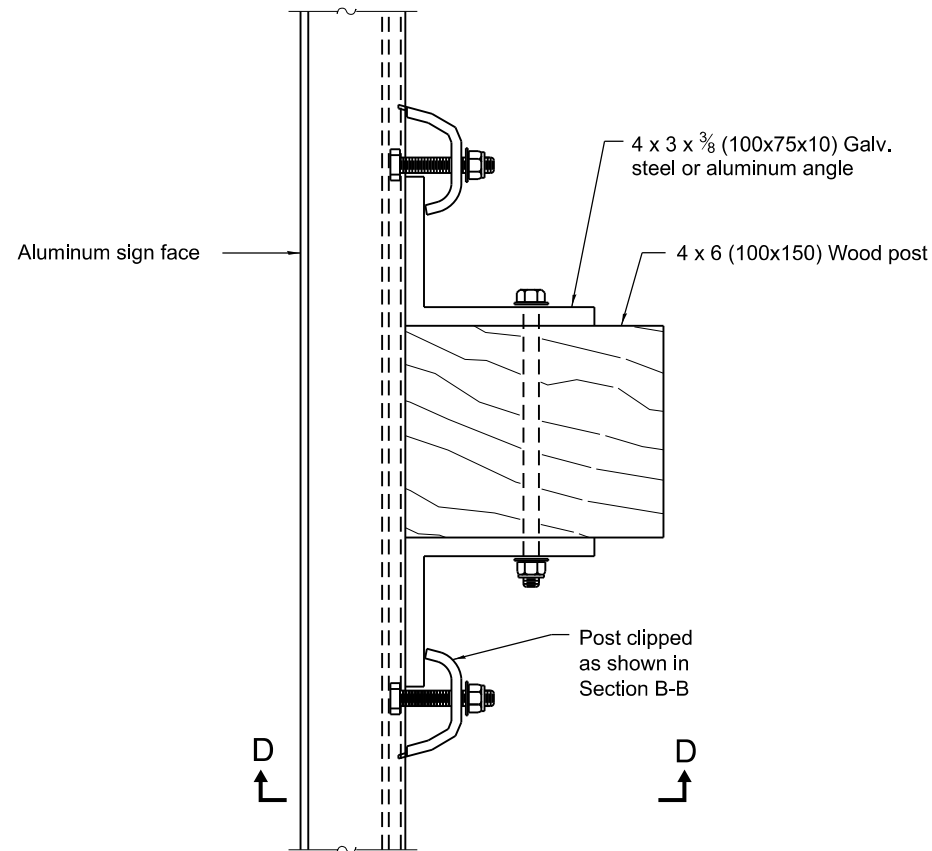
ENGINEER OF DESIGN AND ENVIRONMENT

ISSUED 1-1-00

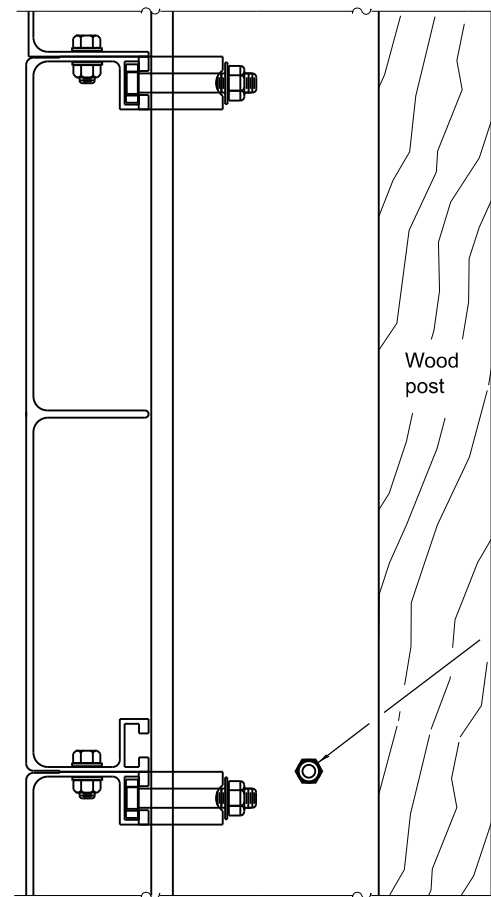
All dimensions are in inches (millimeters) unless otherwise shown.

DATE	REVISIONS
1-1-22	Removed stainless steel clip option and minor typos.
1-1-09	Added aluminum clip. Switch units to English (metric).

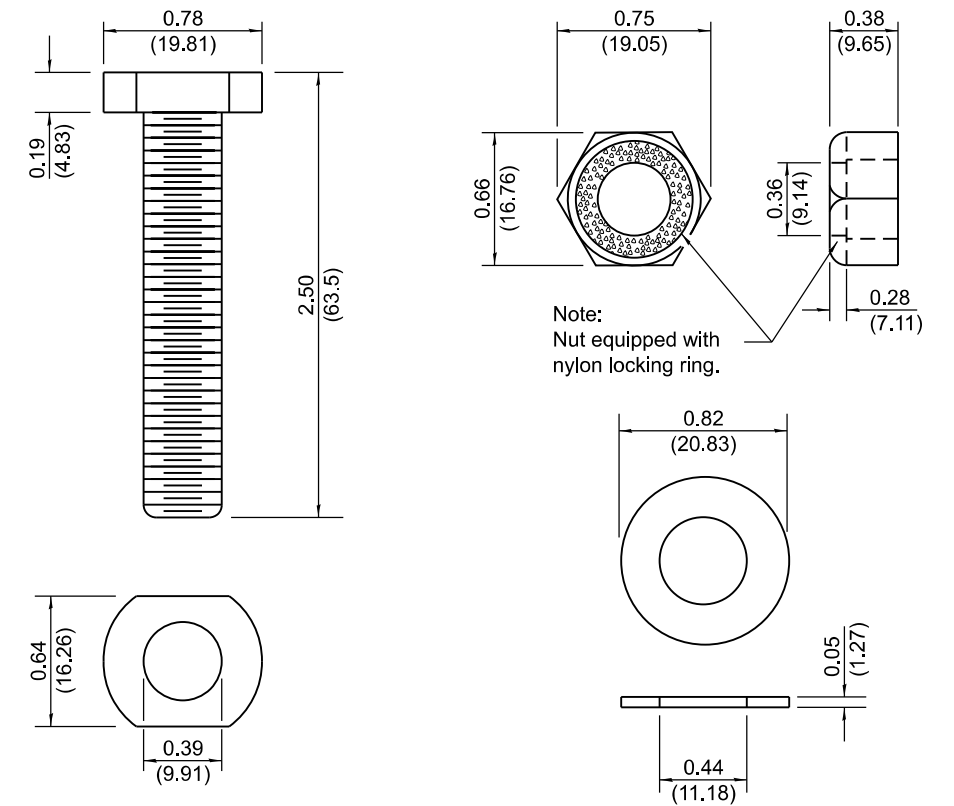
SIGN PANELS
EXTRUDED ALUMINUM TYPE
(Sheet 1 of 2)
STANDARD 720021-03



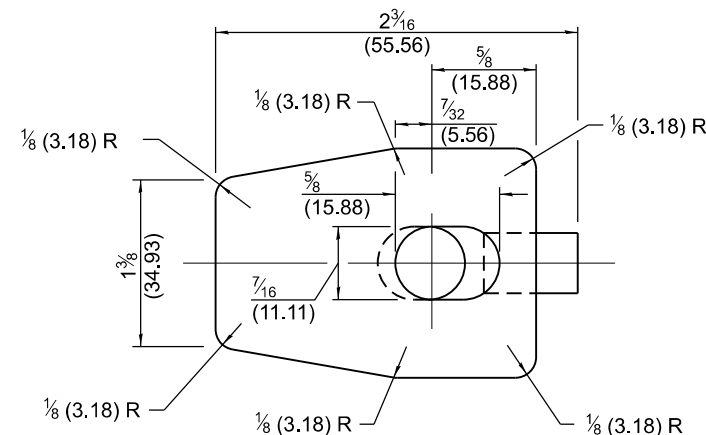
**SIGN PANEL ATTACHMENT
TO WOOD POST**



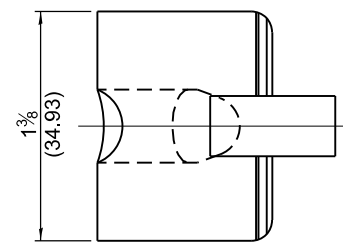
SECTION D-D



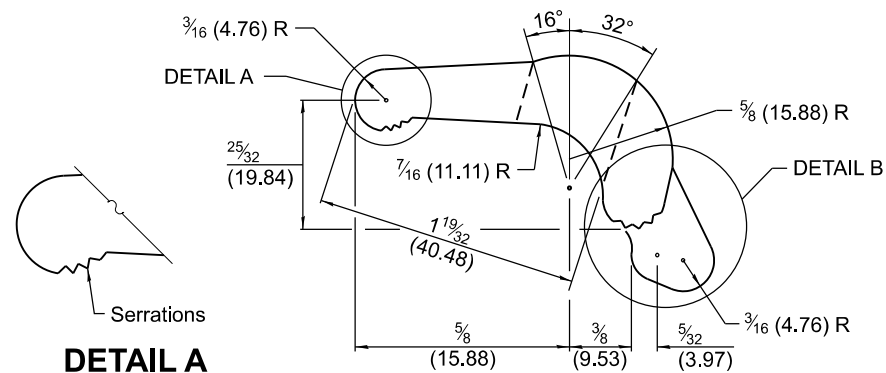
**ALUMINUM CLIP
NUT, BOLT AND WASHER ASSEMBLY**



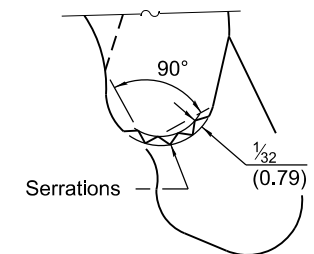
PLAN VIEW



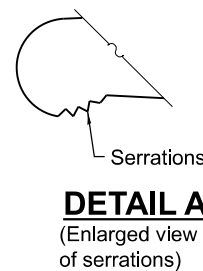
END VIEW



ELEVATION VIEW



**DETAIL A
(Enlarged detail of serrations)**



**DETAIL B
(Enlarged detail of serrations)**

ALUMINUM CLIP