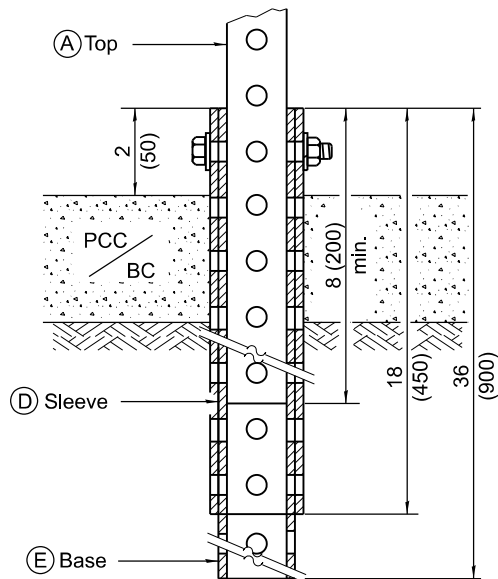
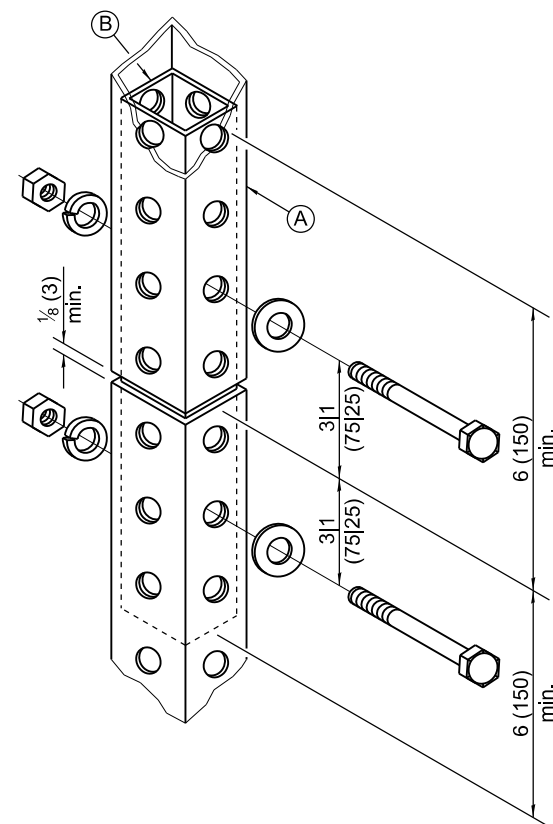


**GROUND MOUNT DETAIL**



**PAVEMENT MOUNT DETAIL**



**SPLICE DETAIL**

|     |   |
|-----|---|
| (A) | 2 x 2 x var. (51 x 51 var.)                             |
| (B) | 1 $\frac{3}{4}$ x 1 $\frac{3}{4}$ x 12 (44 x 44 x 300)  |
| (C) | 2 $\frac{1}{4}$ x 2 $\frac{1}{4}$ x 60 (57 x 57 x 1500) |
| (D) | 2 $\frac{1}{2}$ x 2 $\frac{1}{2}$ x 18 (64 x 64 x 450)  |
| (E) | 2 $\frac{1}{4}$ x 2 $\frac{1}{4}$ x 36 (57 x 57 x 900)  |

**GENERAL NOTES**

All bolts  $\frac{3}{8}$  (M10) hex head zinc or cadmium plated.

All dimensions are in inches (millimeters) unless otherwise shown.

|  |               |
|--|---------------|
| Illinois Department of Transportation                                    |               |
| APPROVED _____ January 1, 2009<br><br>ENGINEER OF OPERATIONS             | ISSUED 1-1-07 |
| APPROVED _____ January 1, 2009<br><br>ENGINEER OF DESIGN AND ENVIRONMENT |               |

| DATE   | REVISIONS  | TELESCOPING STEEL<br>SIGN SUPPORT |
|--------|--|-----------------------------------|
| 1-1-09 | Switched units to English (metric).              |                                   |
| 1-1-07 | New Standard. Used to be part of Standard 72006. | STANDARD 728001-01                |
|        |  |                                   |