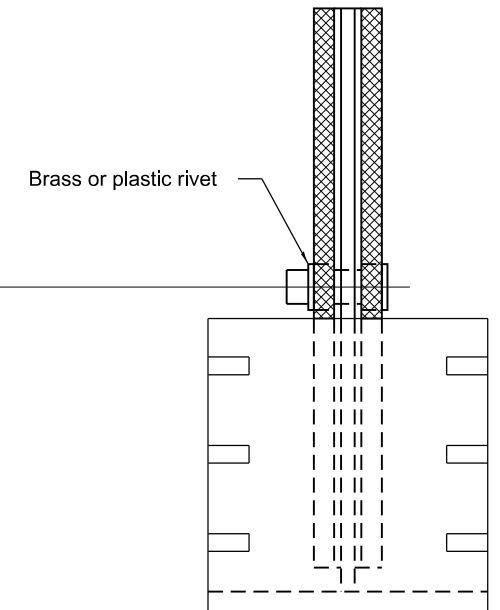
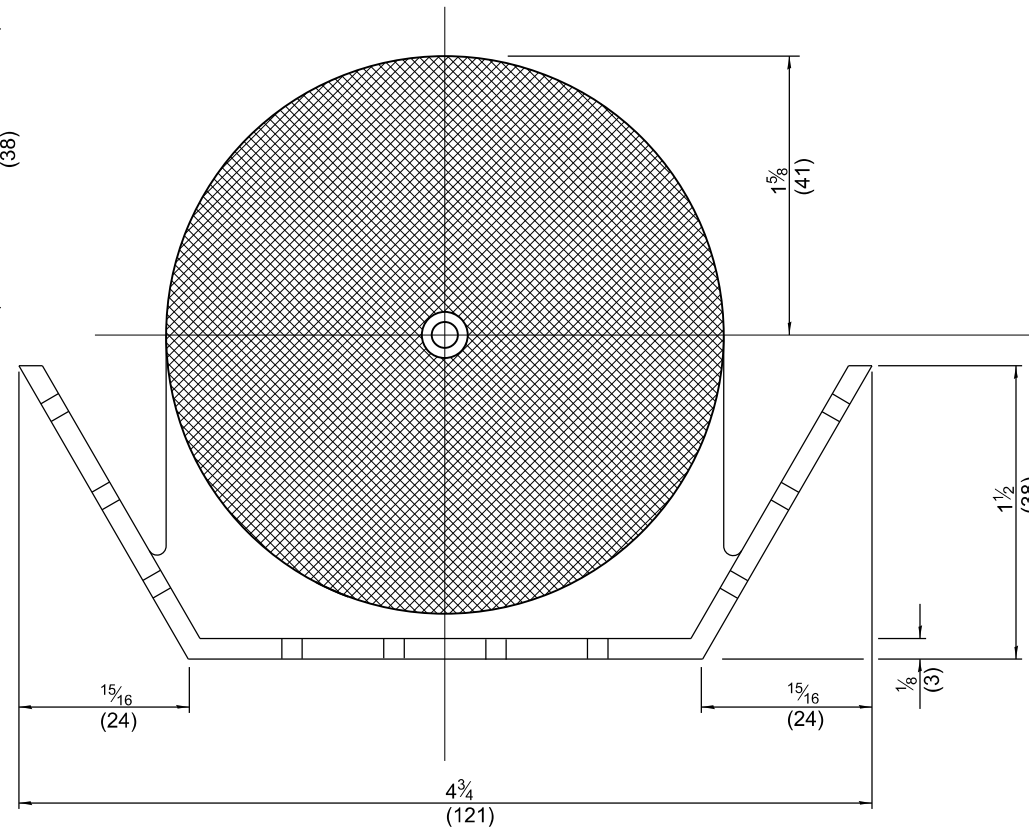
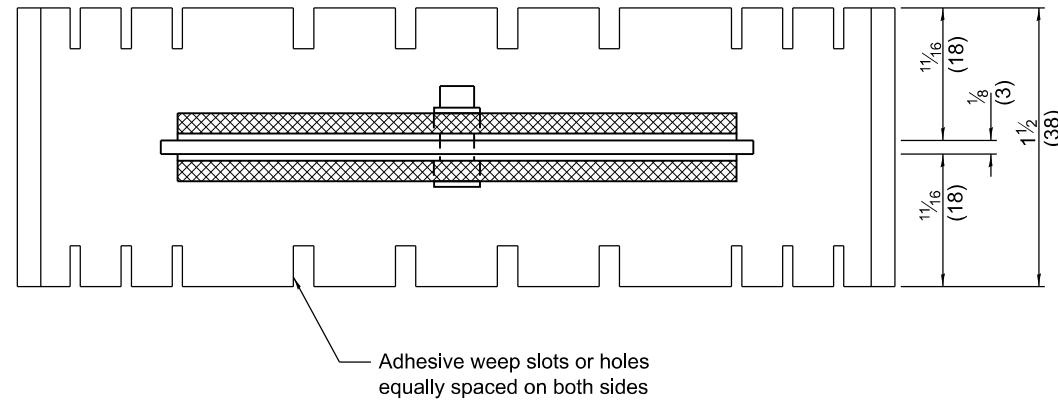


**REFLECTOR TYPE A**  
(monodirectional shown)



All dimensions are in inches (millimeters)  
unless otherwise shown.

**REFLECTOR TYPE B**  
(bidirectional shown)

DATE	REVISIONS
1-1-20	Revised from F-shape to constant slope parapet, revised note 3 on sheet 3, and fix typo.
4-1-16	Added reflector spacing detail.
	Moved TERMINAL MARKER to std. 725001.

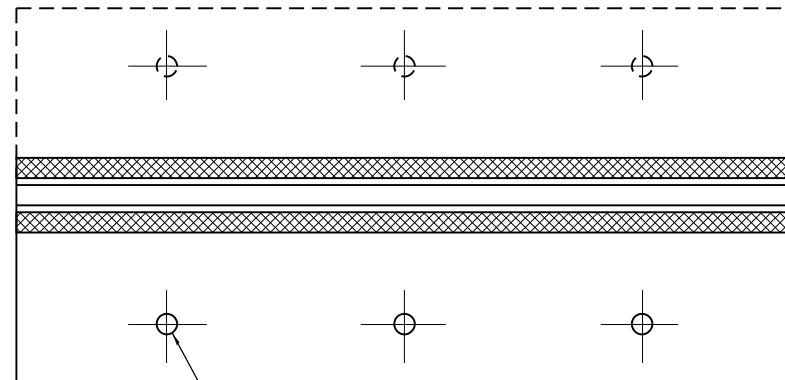
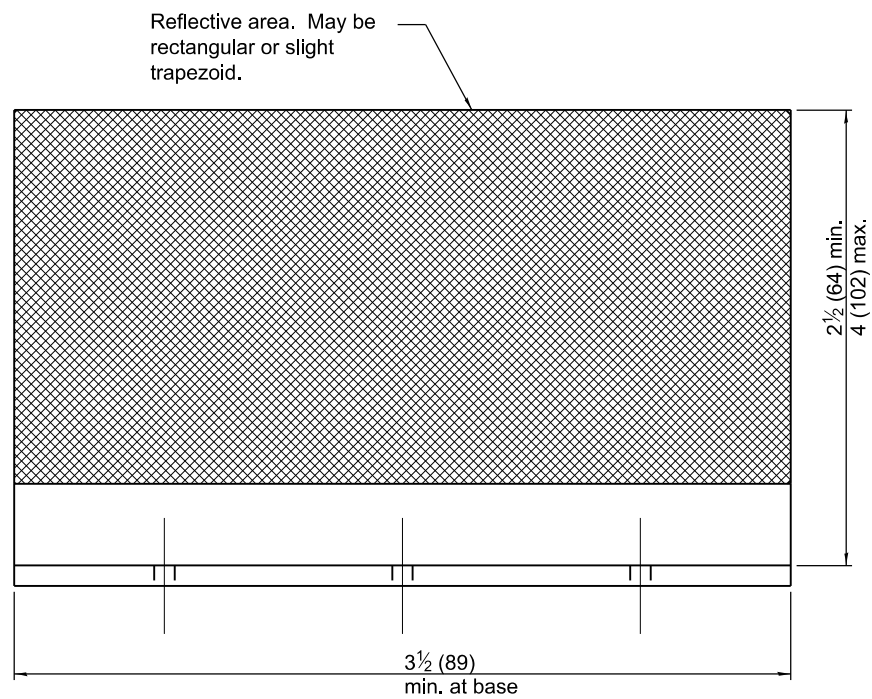
<b>GUARDRAIL AND BARRIER WALL REFLECTOR MOUNTING DETAILS</b> (Sheet 1 of 3)	
	<b>STANDARD 782006-01</b>

Illinois Department of Transportation

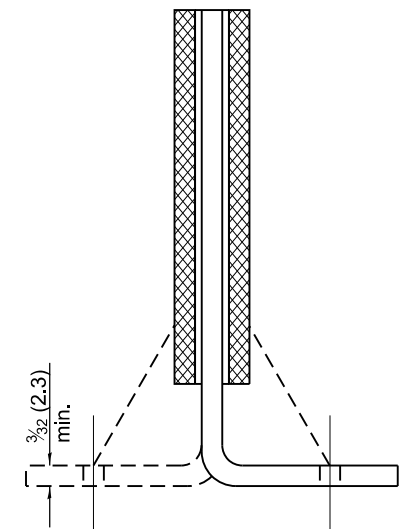
APPROVED January 1, 2020  
ENGINEER OF OPERATIONS

APPROVED January 1, 2020  
ENGINEER OF DESIGN AND ENVIRONMENT

ISSUED 1-1-00

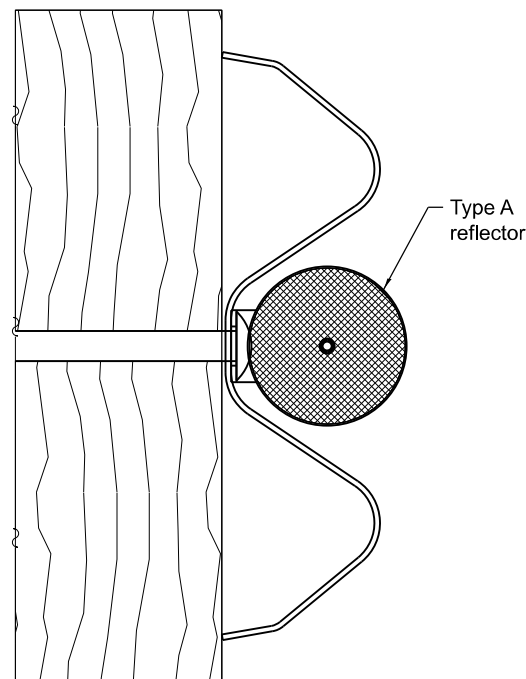


Minimum total area of base 7.0 sq. in. (4,516 mm²)

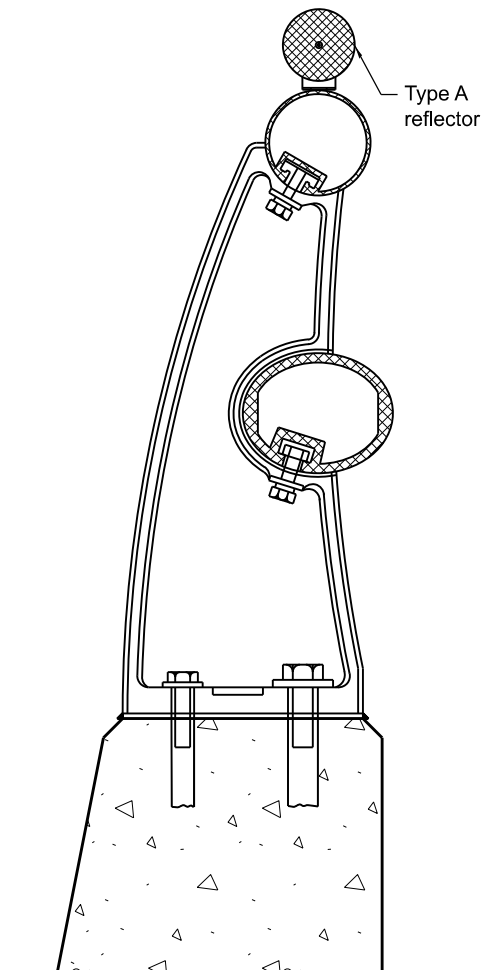
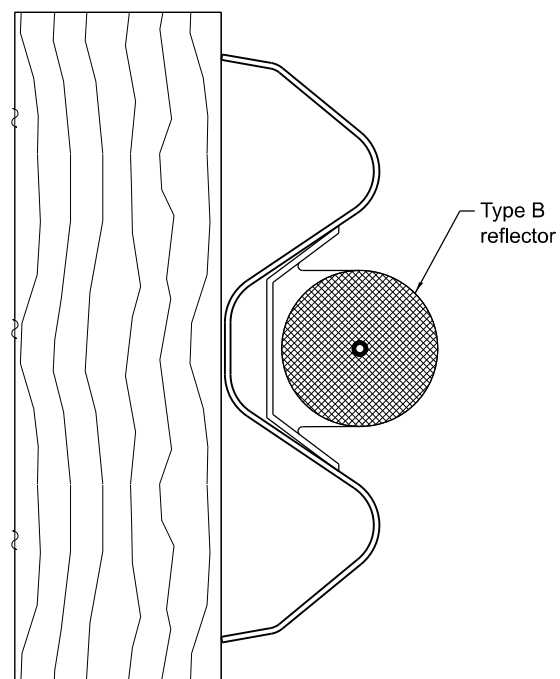


Cross section may be "T" or "L" shaped and may have side supports at ends.

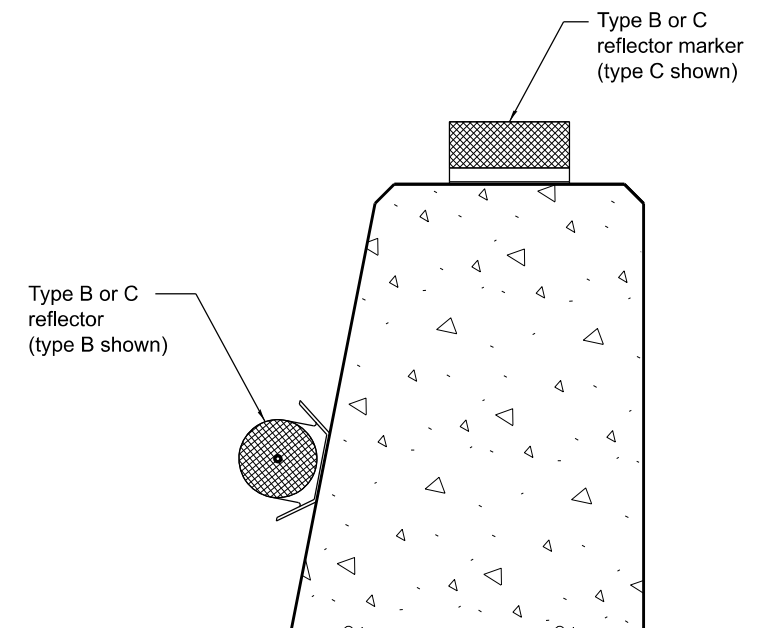
**REFLECTOR TYPE C**



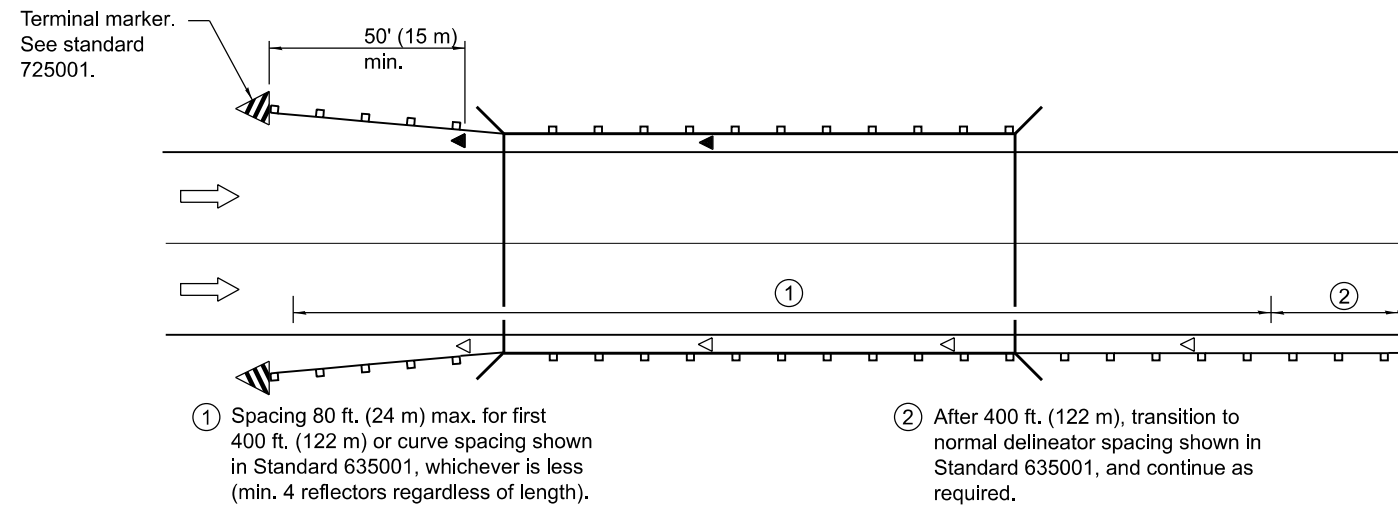
**TYPICAL MOUNTING DETAIL FOR GUARDRAIL REFLECTOR**



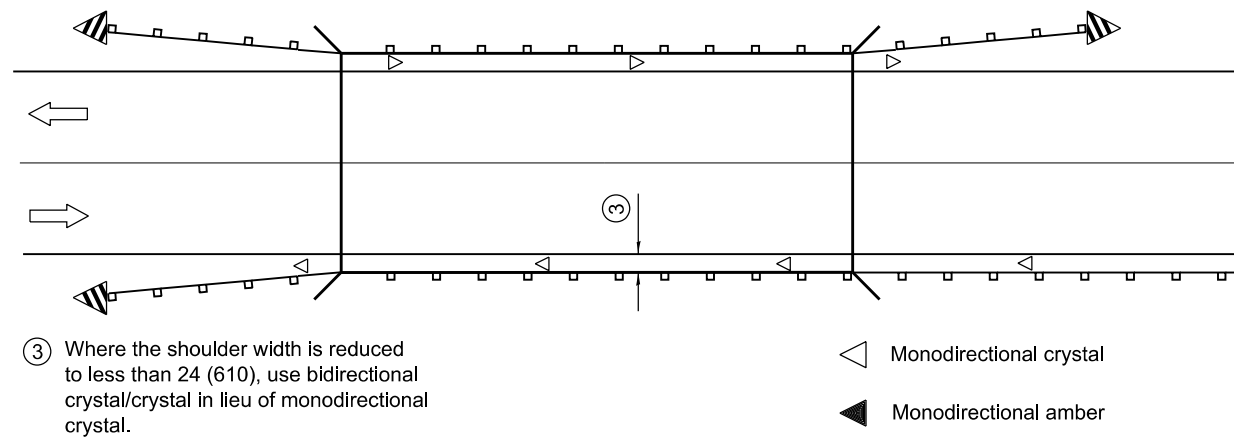
**TYPICAL MOUNTING DETAIL FOR BRIDGE RAIL REFLECTOR**



**TYPICAL MOUNTING DETAIL FOR BARRIER WALL REFLECTOR**



ONE-WAY TRAFFIC



TWO-WAY TRAFFIC

**GUARDRAIL / BARRIER WALL  
REFLECTOR PLACEMENT DETAIL**