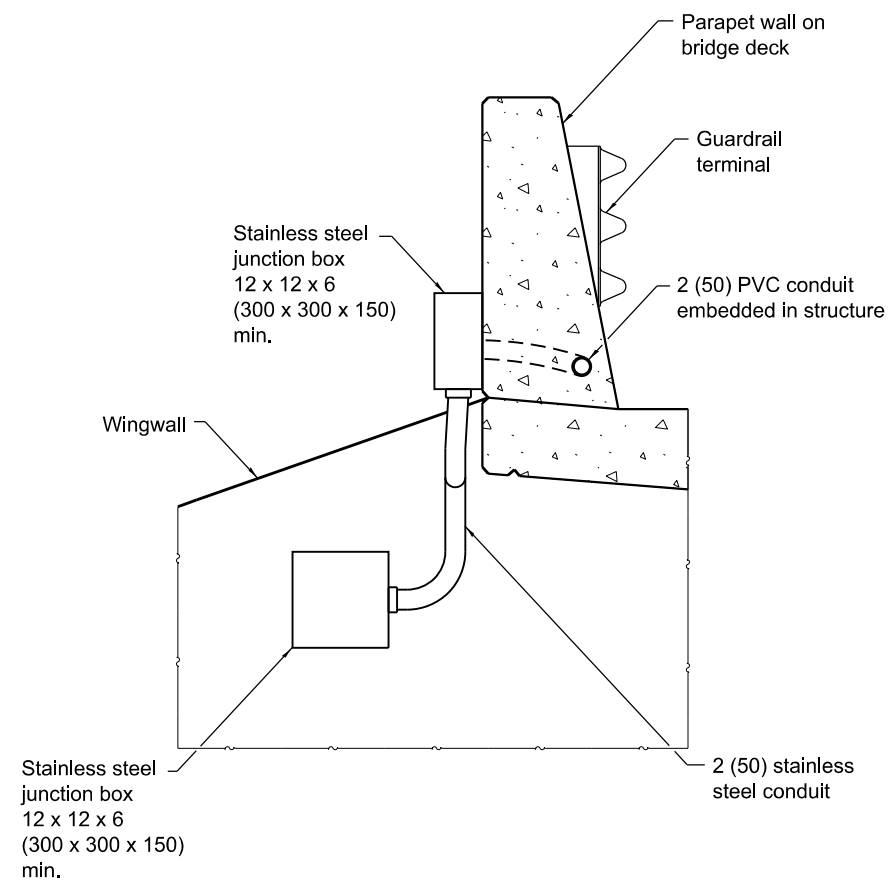
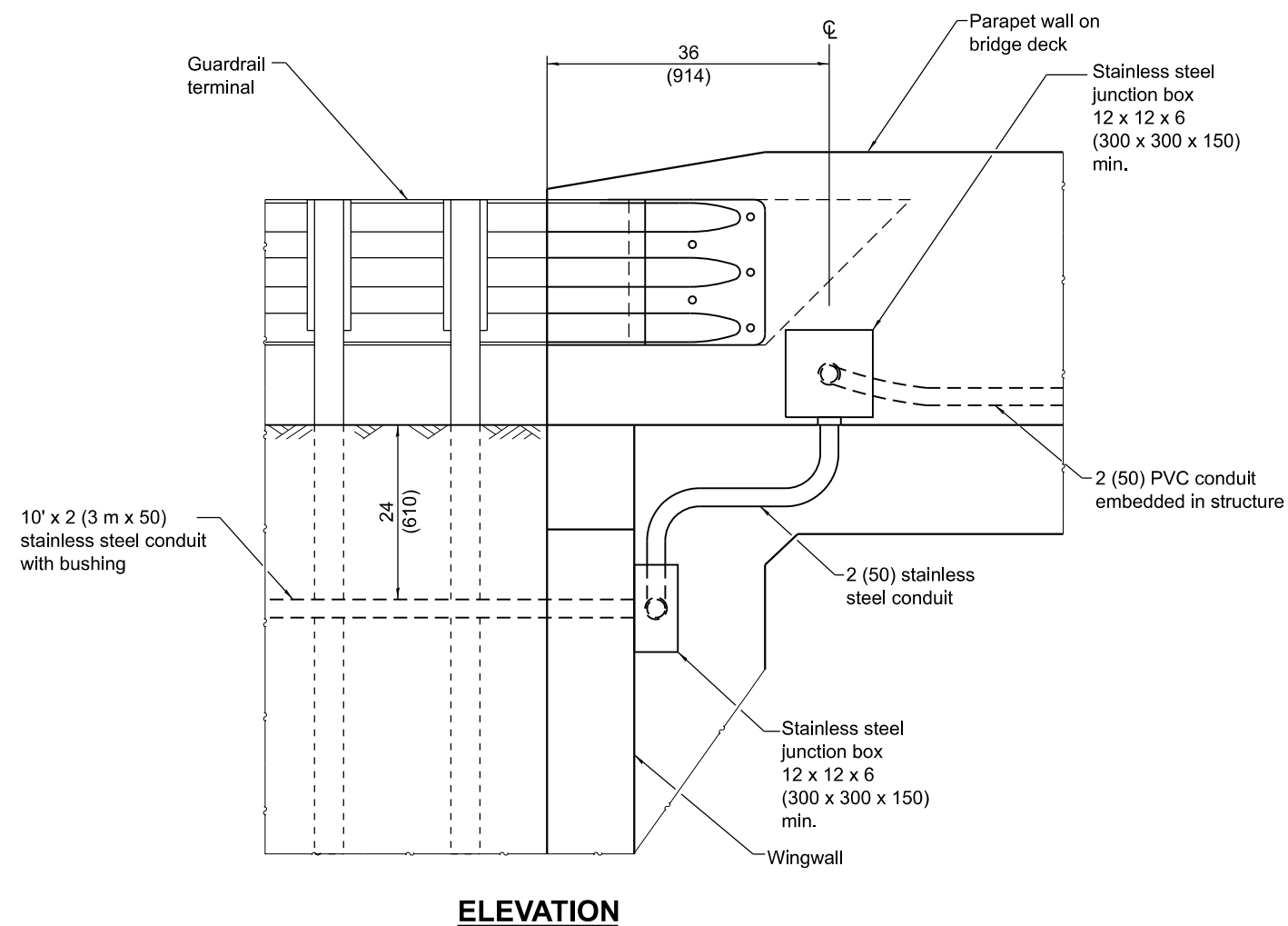
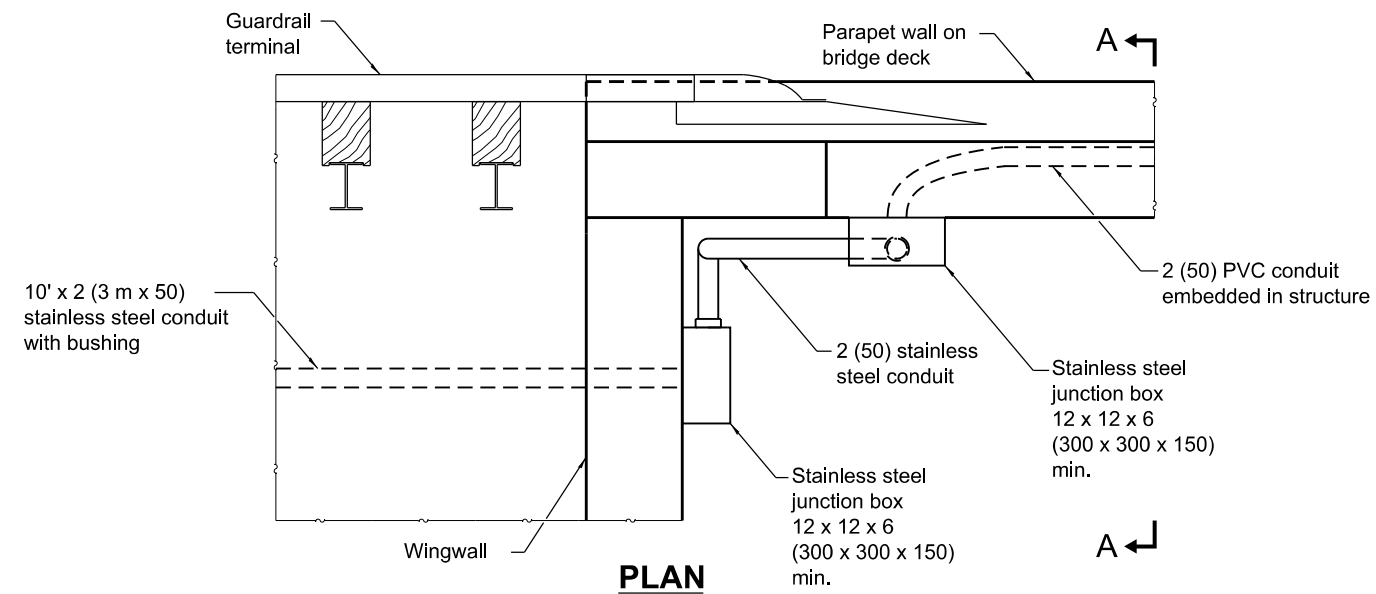




All dimensions are in inches (millimeters) unless otherwise shown.

| DATE | REVISIONS |
|--------|--------------------------------------|
| 1-1-20 | Revised from F-shape to constant |
| | slop parapet, added general note for |
| | steel connector plate, revised |
| | standard name, and fixed typo. |
| 1-1-15 | New Standard |
| | |

STANDARD 812001-01



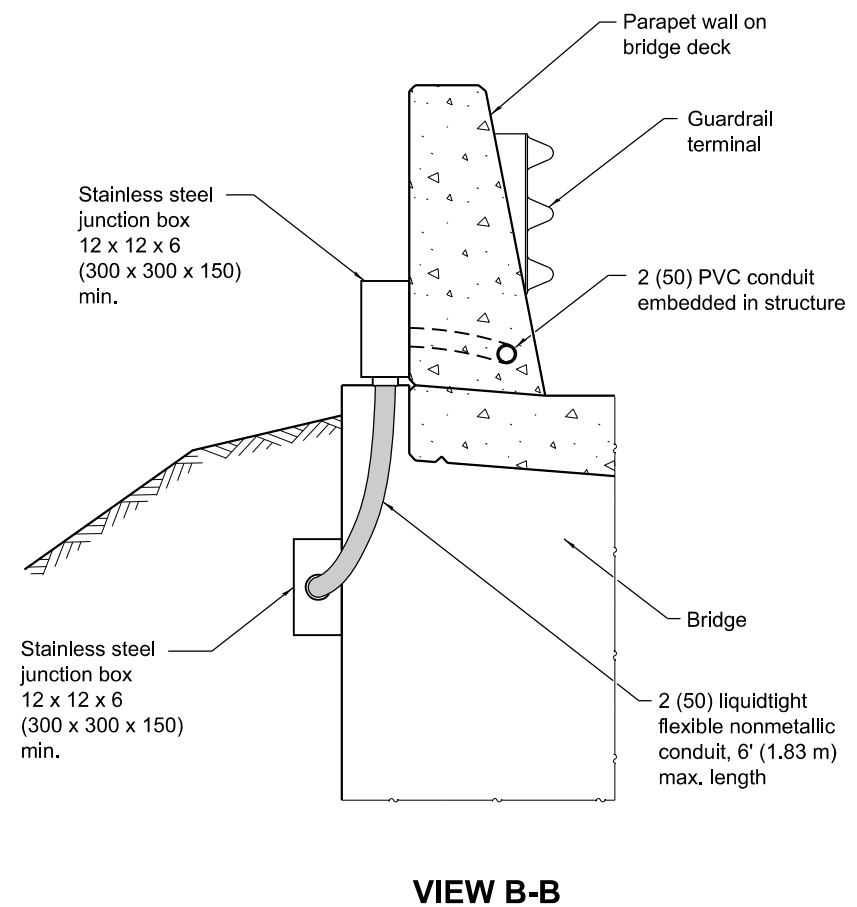
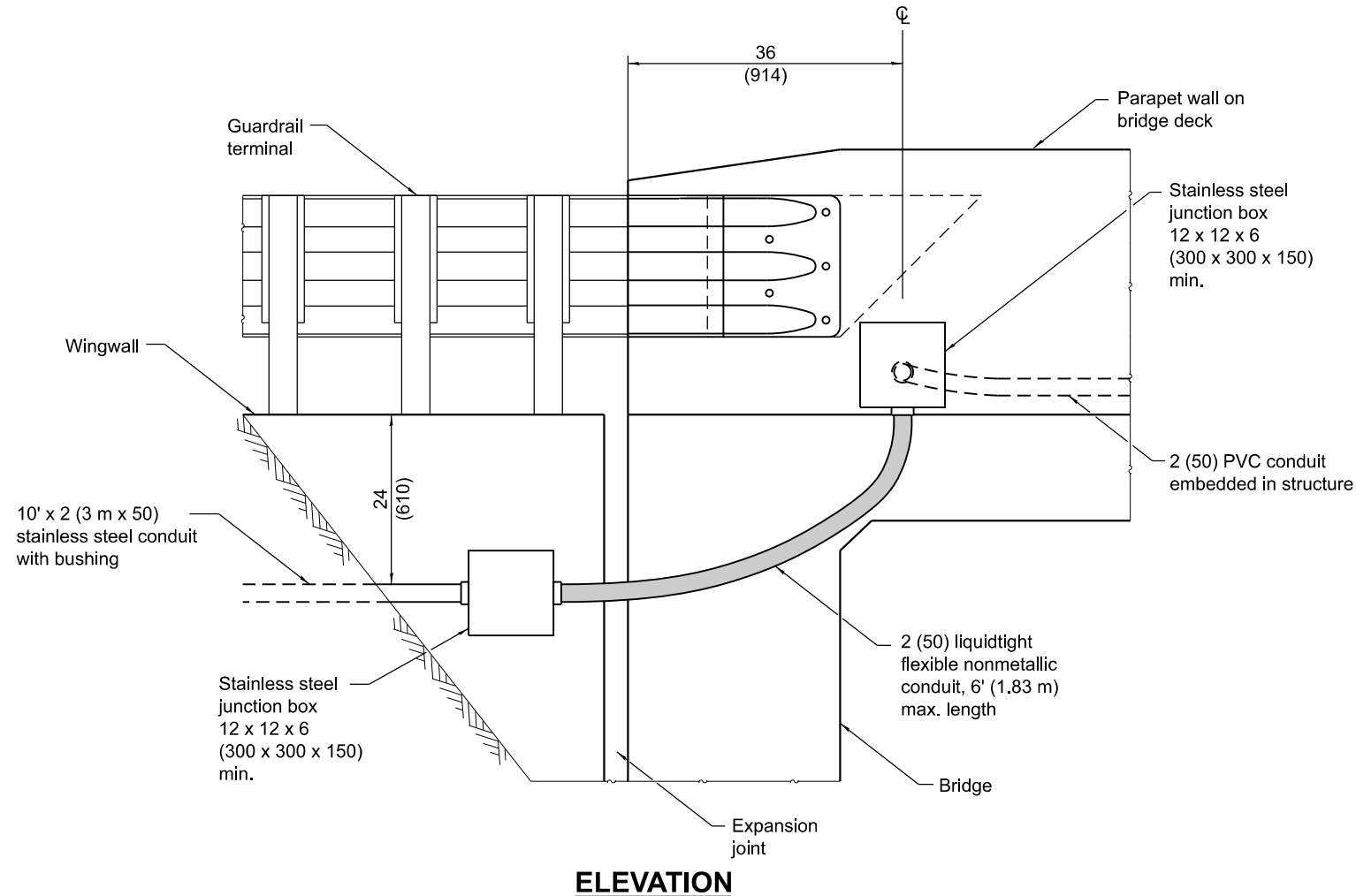
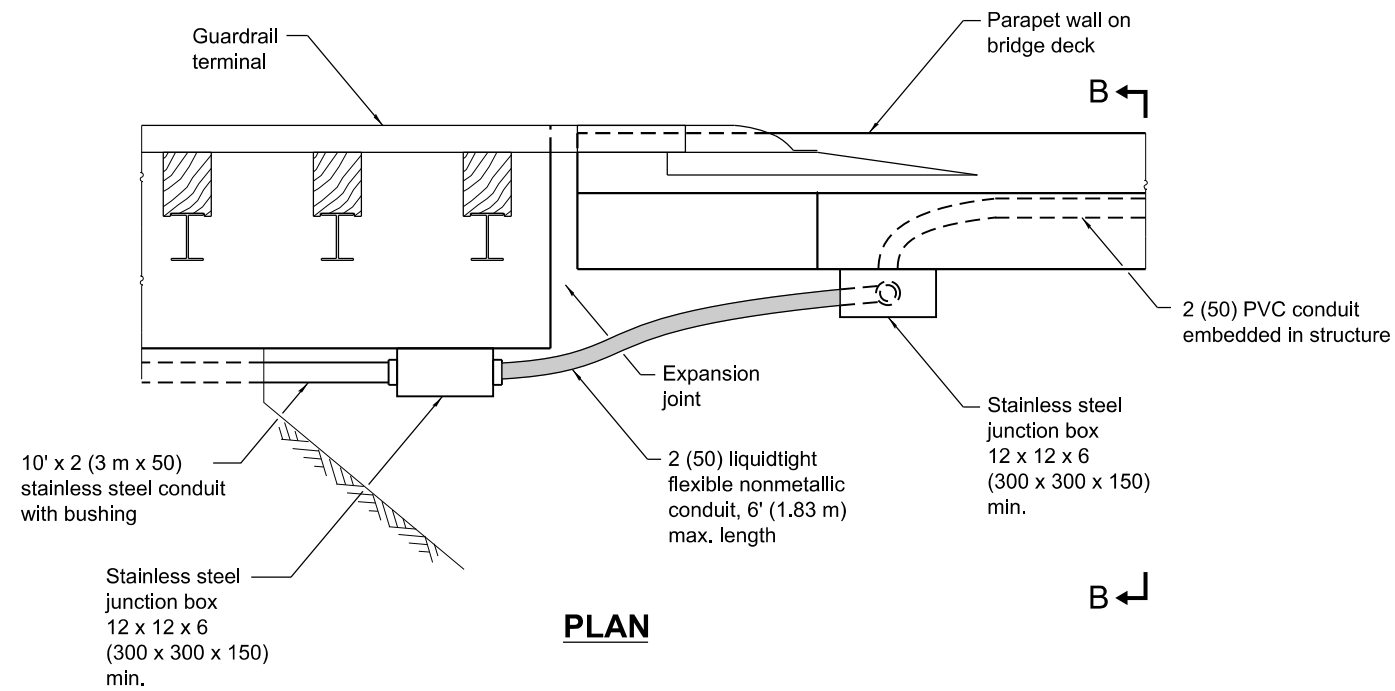
**INTEGRAL/SEMI-INTEGRAL ABUTMENT WITH
PARAPET ENDING ON BRIDGE DECK**

**RACEWAYS EMBEDDED
IN STRUCTURE**

(Sheet 2 of 3)

STANDARD 812001-01

| | |
|---|---------------|
| Illinois Department of Transportation | |
| APPROVED <u>January 1, 2020</u> ELECTRICAL AND MECHANICAL UNIT CHIEF | ISSUED 1-1-15 |
| APPROVED <u>January 1, 2020</u> ENGINEER OF DESIGN AND ENVIRONMENT | |



**JOINTED ABUTMENT WITH
PARAPET ENDING ON BRIDGE DECK**

**RACEWAYS EMBEDDED
IN STRUCTURE**

(Sheet 3 of 3)

STANDARD 812001-01

| | |
|---|---------------|
| Illinois Department of Transportation | |
| APPROVED <u>January 1, 2020</u> ELECTRICAL AND MECHANICAL UNIT CHIEF | ISSUED 1-1-15 |
| APPROVED <u>January 1, 2020</u> ENGINEER OF DESIGN AND ENVIRONMENT | |