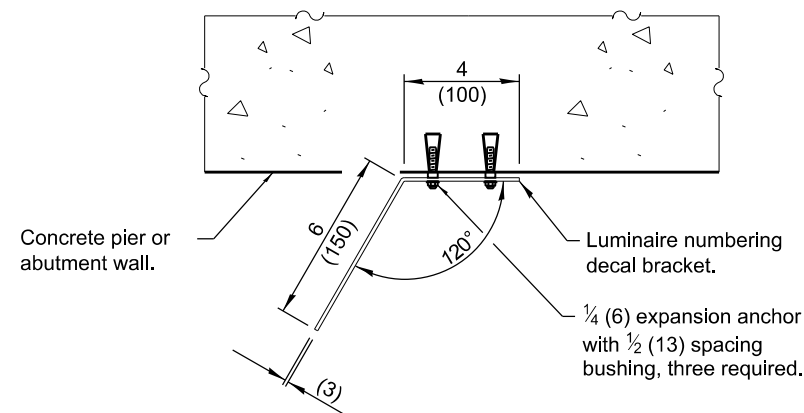
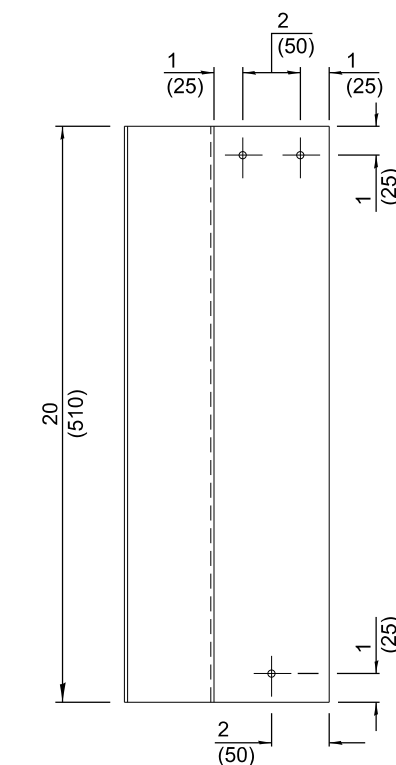


SECTION A-A

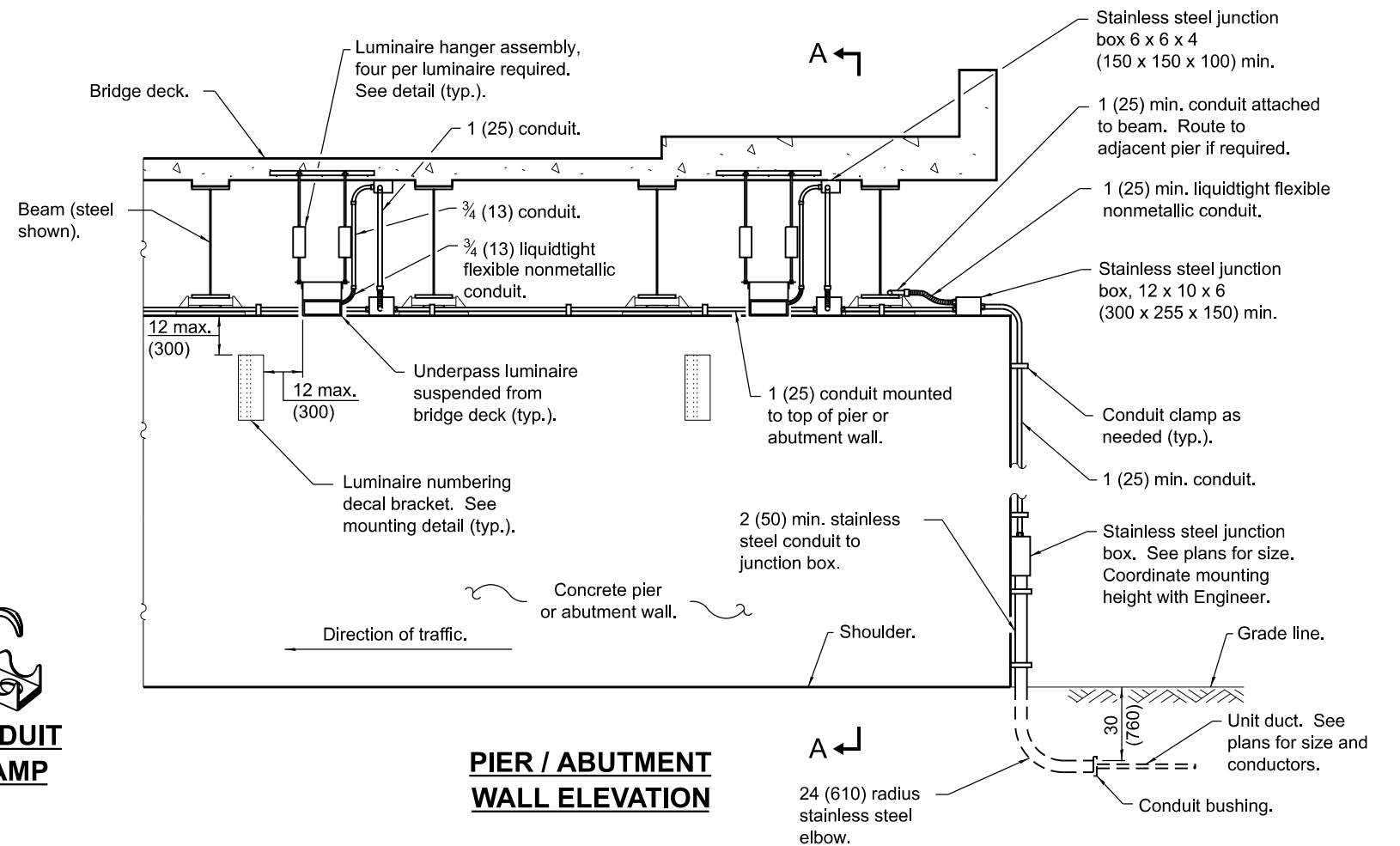
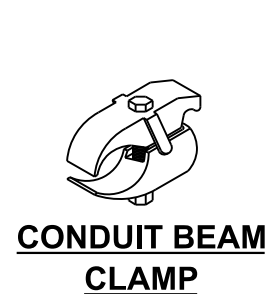


TOP VIEW



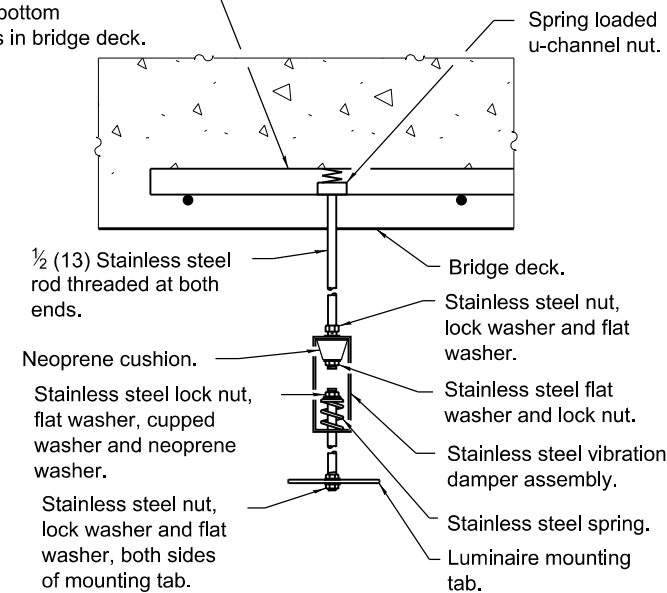
ELEVATION

**LUMINAIRE NUMBERING DECAL
BRACKET MOUNTING DETAIL**



**PIER / ABUTMENT
WALL ELEVATION**

36 x 1 1/8 x 1 1/8 (914 x 41 x 41)
hot dipped galvanized u-channel
wire-tied to top of bottom
reinforcement bars in bridge deck.



**LUMINAIRE HANGER
ASSEMBLY DETAIL**

GENERAL NOTES

- See plans for underpass luminaire locations.
- Underpass luminaires shall be centered between beams unless otherwise directed by the Engineer.
- Optics of underpass luminaires shall be installed 1 (25) above the bottom of the beams with no parts of the luminaire or attached conduit below the beams.
- Rigid conduit may be used in lieu of flexible conduit.
- Stainless steel conduit shall be used beneath any openings in the bridge deck.
- Branch circuits to luminaires shown routed from underground. Branch circuits may also be routed from bridge parapet above.
- All dimensions are in inches (millimeters) unless otherwise shown.

DATE	REVISIONS
4-1-16	New Standard.

**UNDERPASS LIGHTING
SUSPENDED**

STANDARD 821006