

ELECTRIC SERVICE INSTALLATION

(Typical overhead service shown. Cut pole off for underground service and treat cut surface with preservative. Consult utility company standards for exact requirements.)

* Size larger as needed.

Illinois Department of Transportation

APPROVED January 1, 2019

ME Neppelt

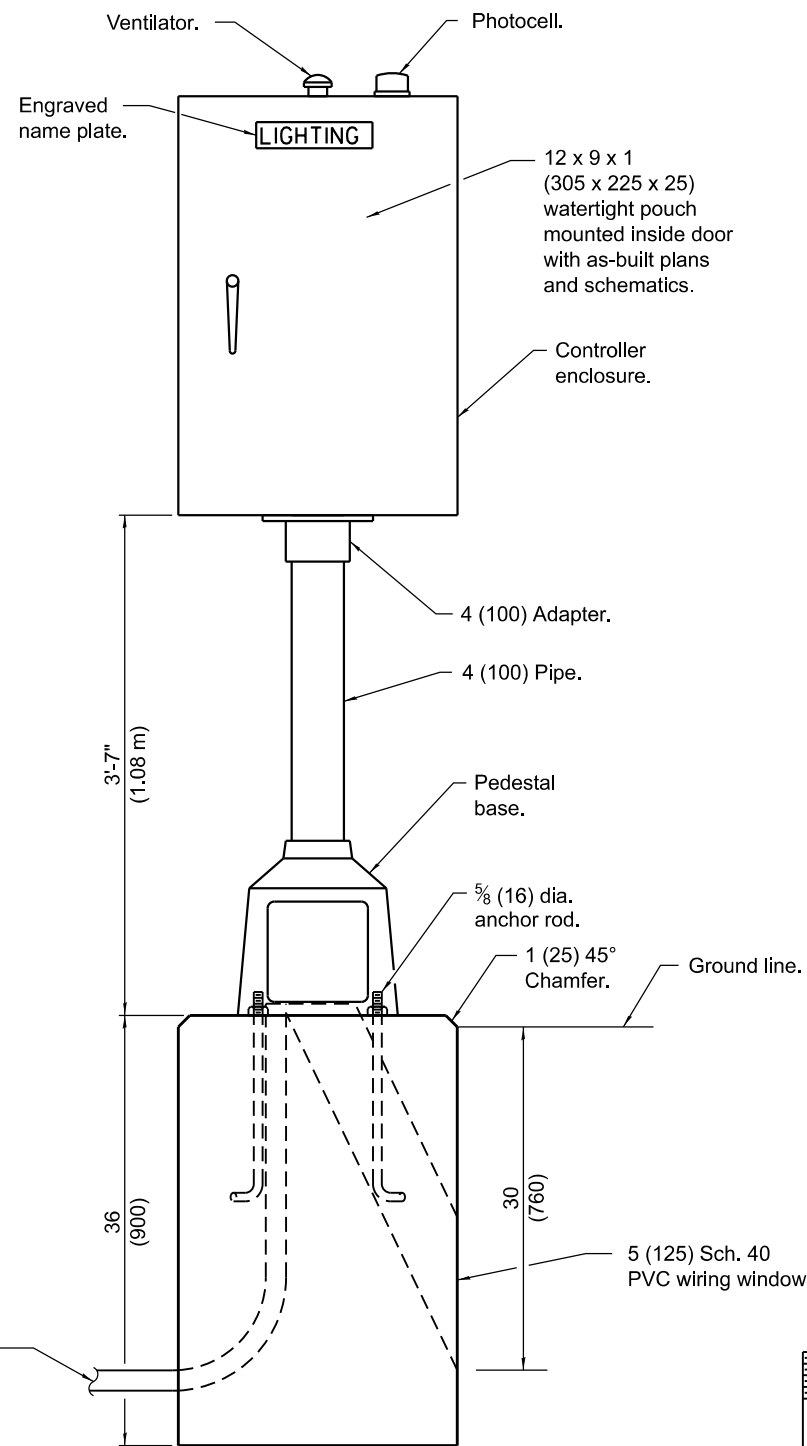
ELECTRICAL AND MECHANICAL UNIT CHIEF

APPROVED January 1, 2019

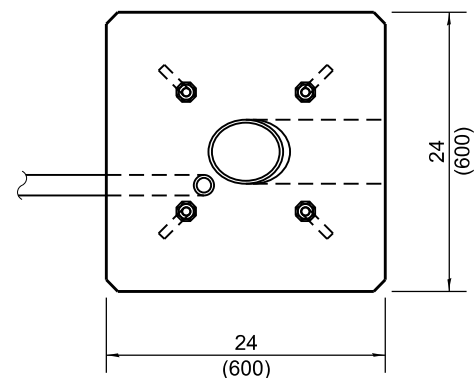
S.E. EG

ENGINEER OF DESIGN AND ENVIRONMENT

ISSUED 1-1-10

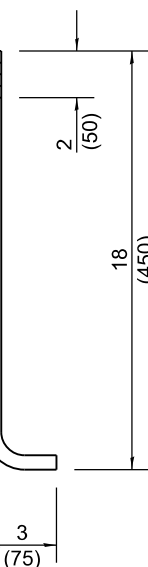


LIGHTING CONTROLLER

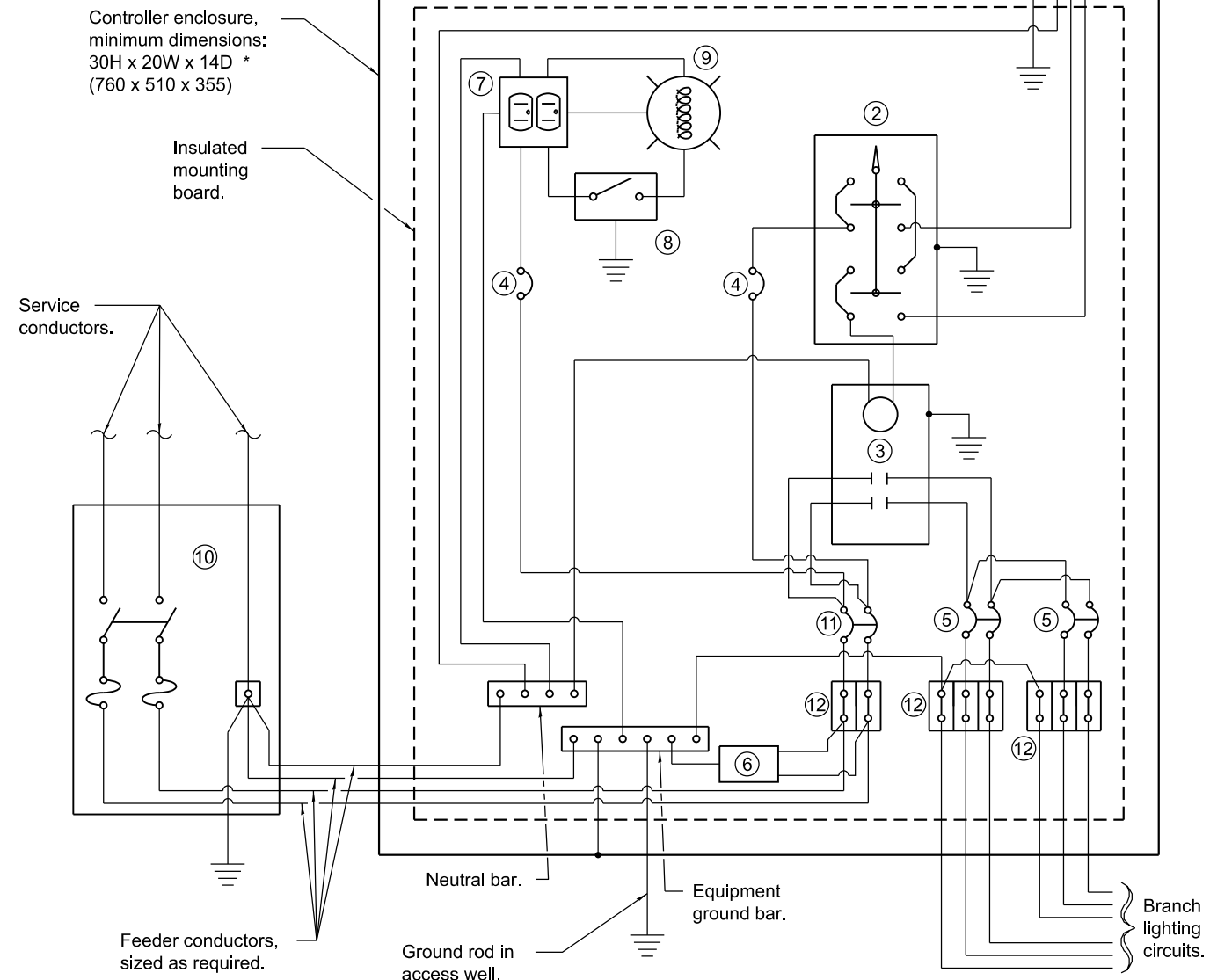


FOUNDATION (PLAN)

(Work pad not shown.)



ANCHOR ROD DETAIL



CONTROL SCHEMATIC

- ① Photocell with integral surge arrester.
 - ② HAND-OFF-AUTO selector switch.
 - ③ 100 amp*, electrically held contactor.
 - ④ 15 amp, 1-pole circuit breaker.
 - ⑤ 20 amp*, 2-pole circuit breaker (two spares required but not shown).
 - ⑥ Surge arrester.
 - ⑦ GFCI duplex receptacle.
 - ⑧ Single-pole, single-throw switch.
 - ⑨ Incandescent luminaire, enclosed and gasketed with 100 watt lamp.
 - ⑩ Service disconnect switch - 2-pole, 3-wire, 60 amp*, fused at 60 amp*, solid neutral in NEMA 4X enclosure having lockable external handle.
 - ⑪ 60 amp*, 2-pole circuit breaker.
 - ⑫ Terminal block sized for conductors as shown on plans.
- * Size larger as needed.

All dimensions are in inches (millimeters) unless otherwise shown.

DATE	REVISIONS
1-1-19	Replaced ** note with new note regarding consulting utility company standards for installation.
1-1-15	Added note ⑫.

LIGHTING CONTROLLER PEDESTAL MOUNTED, 240V

STANDARD 825011-04