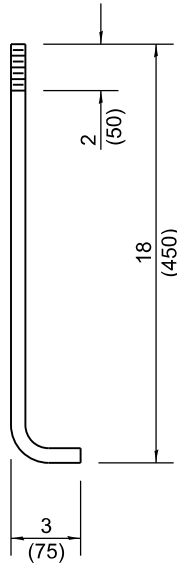


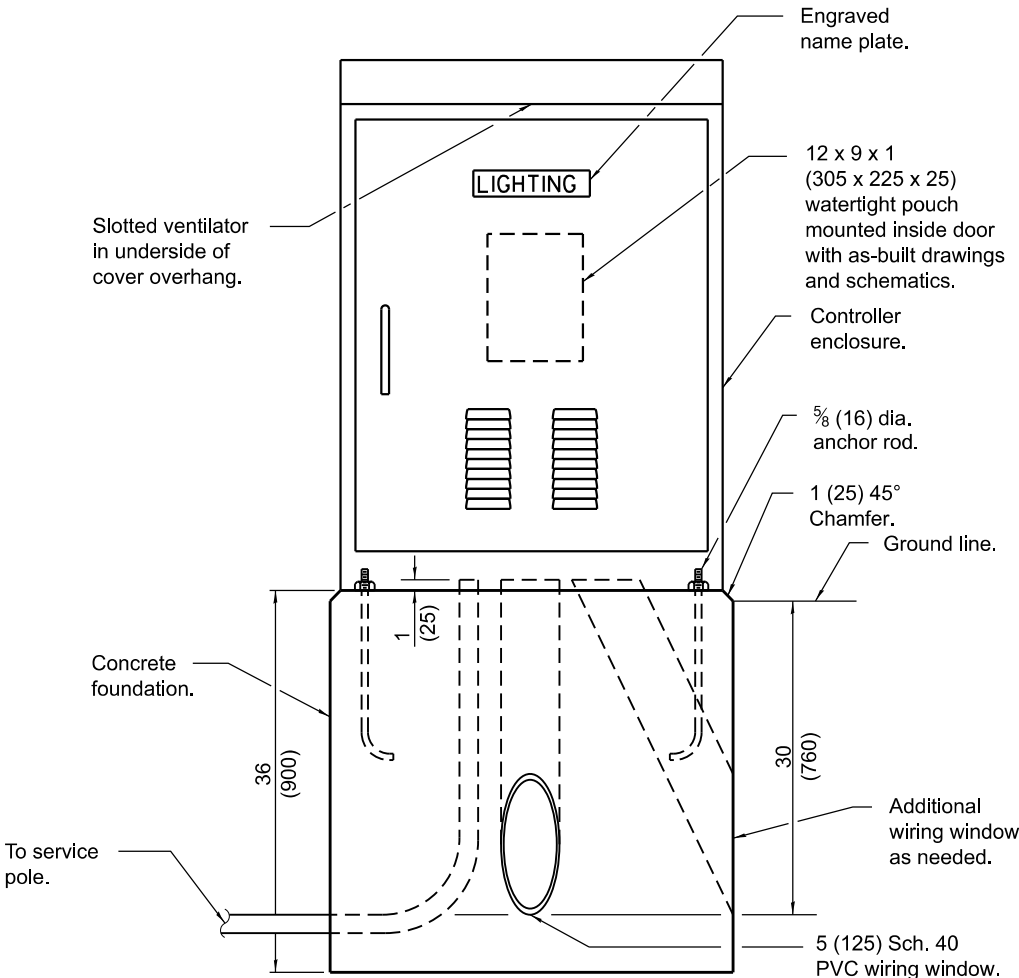
ELECTRIC SERVICE INSTALLATION

(Typical overhead service shown. Cut pole off for underground service and treat cut surface with preservative. Consult utility company standards for exact requirements.)

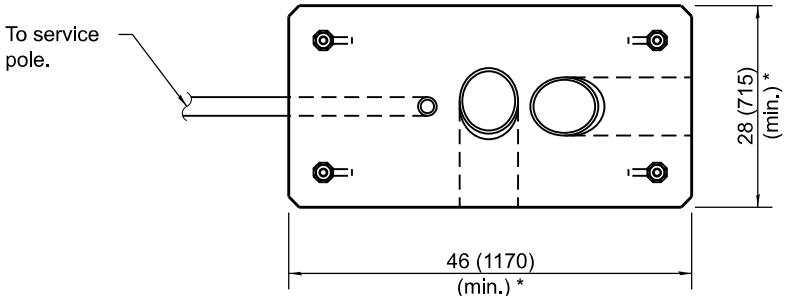
* Size larger as needed.



**ANCHOR ROD
DETAIL**



LIGHTING CONTROLLER



FOUNDATION (PLAN)

(Work pad not shown.)

* Size larger as needed.


All dimensions are in inches (millimeters) unless otherwise shown.

DATE	REVISIONS
1-1-22	Replaced "Navigation" with "Obstruction Warning" in std. title, note ② and Control Schematic.
1-1-19	Replaced ** note with new note regarding consulting utility company standards for installation.

**OBSTRUCTION WARNING
LIGHTING CONTROLLER, 240V**


(Sheet 1 of 2)

STANDARD 826001-03

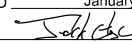


Illinois Department of Transportation

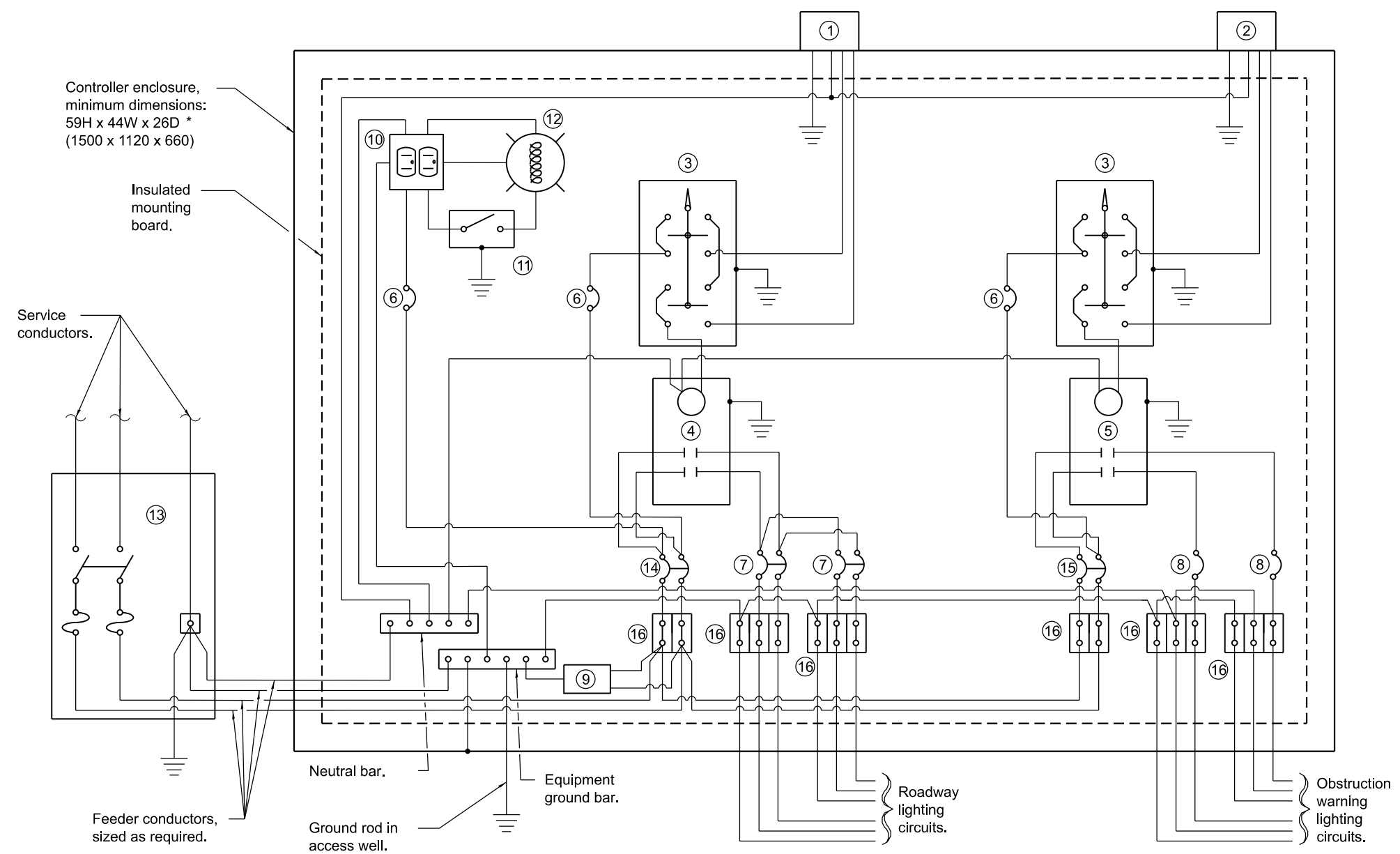
APPROVED January 1, 2022


ELECTRICAL AND MECHANICAL UNIT CHIEF

APPROVED January 1, 2022


ENGINEER OF DESIGN AND ENVIRONMENT

ISSUED 1-1-12



- ① Photocell with integral surge arrester for roadway lighting.
- ② Photocell with integral surge arrester for obstruction warning lighting.
- ③ HAND-OFF-AUTO selector switch.
- ④ 100 amp*, electrically held contactor.
- ⑤ 60 amp*, electrically held contactor.
- ⑥ 15 amp, 1-pole circuit breaker.
- ⑦ 20 amp*, 2-pole circuit breaker (two spares required but not shown).
- ⑧ 20 amp*, single-pole circuit breaker (two shown, quantity as required).
- ⑨ Surge arrester.
- ⑩ GFCI duplex receptacle.
- ⑪ Single-pole, single-throw switch.
- ⑫ Incandescent luminaire, enclosed and gasketed with 100 watt lamp.
- ⑬ Service disconnect switch - 2-pole, 3-wire, 100 amp*, fused at 100 amp*, solid neutral in NEMA 4X enclosure having lockable external handle.
- ⑭ 60 amp*, 2-pole circuit breaker.
- ⑮ 30 amp*, 2-pole circuit breaker.
- ⑯ Terminal block sized for conductors as shown on plans.

* Size larger as needed.

CONTROL SCHEMATIC