

POLE		
MOUNTING HEIGHT	MINIMUM SHAFT DIAMETER	MINIMUM WALL THICKNESS
35' (10.7 m) or less	8 tapered to 4 1/2 (200 to 114)	0.25 (6)
Greater than 35' (10.7 m) to 45' (13.7 m)	10 tapered to 6 (250 to 150)	0.25 (6)
Greater than 45' (13.7 m) to 50' (15.2 m)	10 tapered to 6 (250 to 150)	0.312 (8)

POLE BASE	
MOUNTING HEIGHT	BOLT CIRCLE DIAMETER
35' (10.7 m) or less	11 1/2 (290)
Greater than 35' (10.7 m) to 50' (15.2 m)	15 (380)

GENERAL NOTES

See Standard 836001 for Light Pole Foundation and grounding electrode.

See Standard 720001 for pole identification banding to pole.

Voids in light pole base shall be sealed to prevent rodent entry.

Provide breakaway devices where required.

Where anchor rods on existing bridge parapets are too short to mount poles as shown, install leveling plate directly on concrete and level with stainless steel washers.

All dimensions are in inches (millimeters) unless otherwise shown.

MAST ARM LIGHT POLE

(Single or twin mount)


* Unless directed otherwise by the Engineer.

DATE	REVISIONS
1-1-15	Revised note on HANDHOLE DETAIL.
1-1-14	Added pole mounted on bridge
	parapet. Modified attachment
	of screen.

LIGHT POLE
ALUMINUM MAST ARM

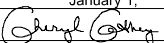
(Sheet 1 of 2)

STANDARD 830001-03




Illinois Department of Transportation

APPROVED January 1, 2015



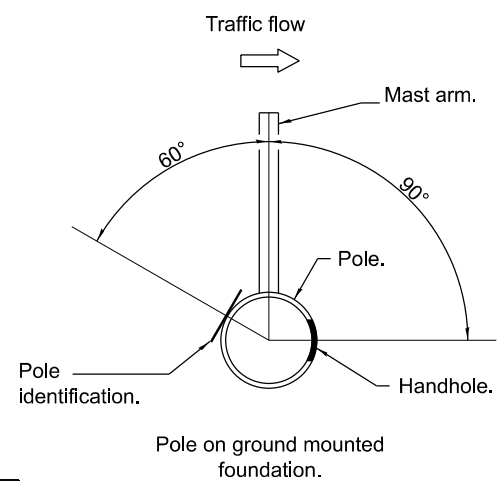
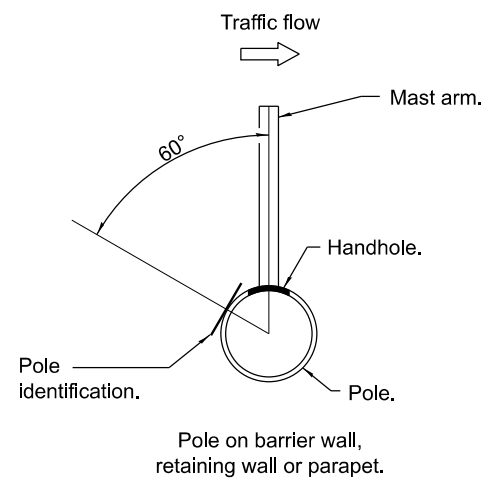
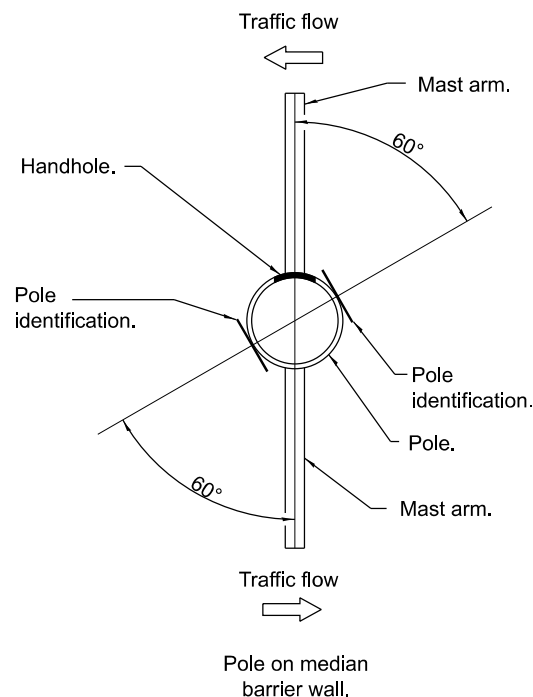
ENGINEER OF PRELIMINARY ENGINEERING

APPROVED January 1, 2015

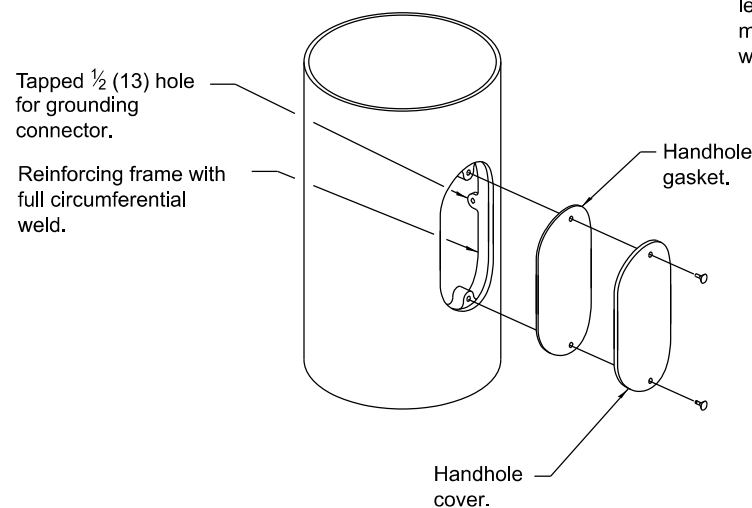
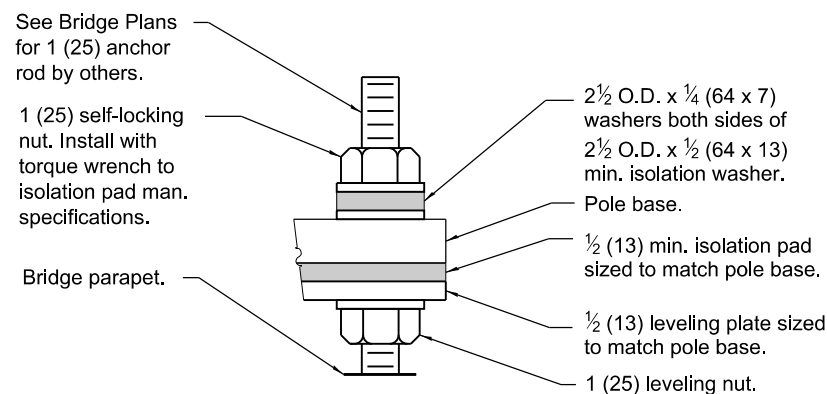
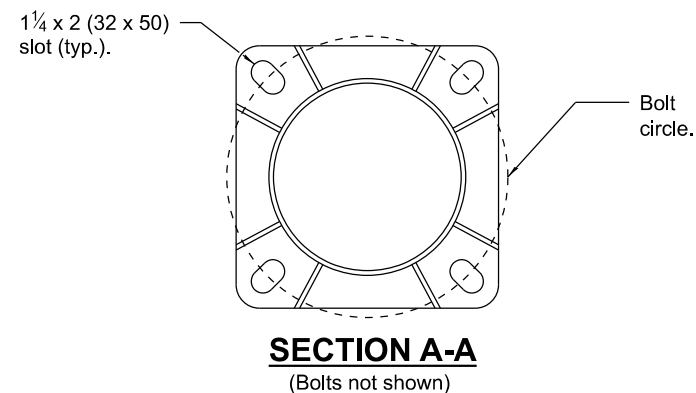


ENGINEER OF DESIGN AND ENVIRONMENT

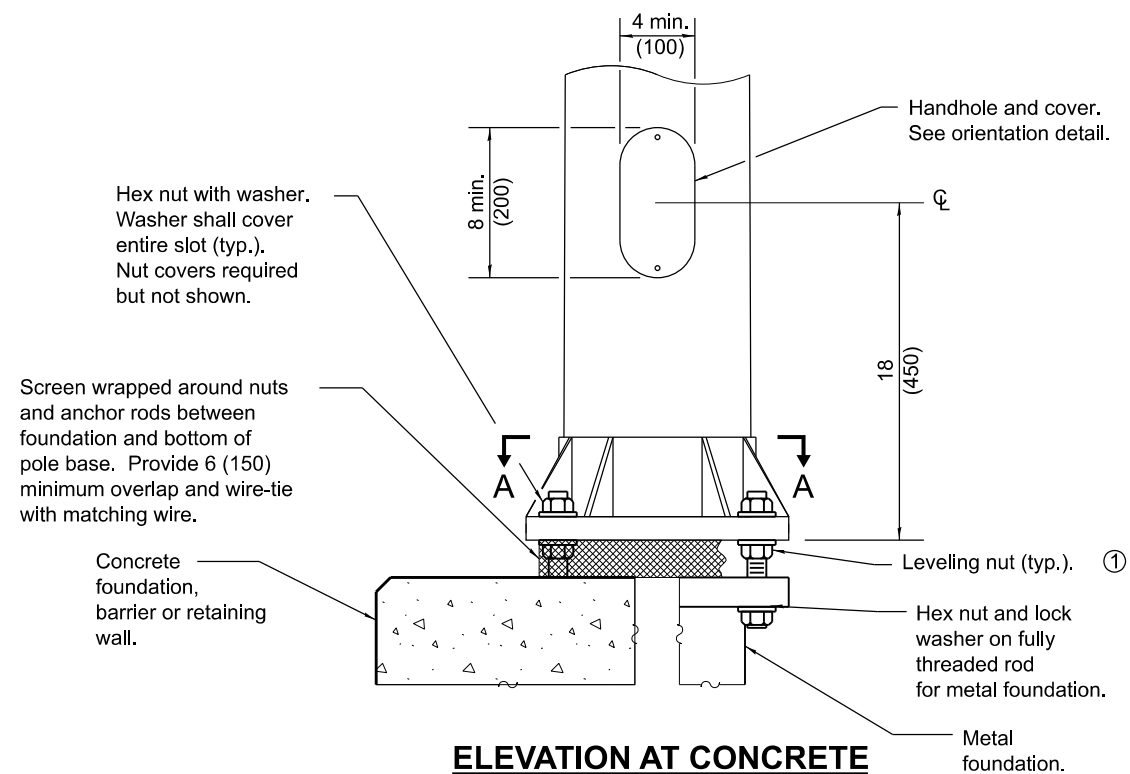
ISSUED 1-1-12



HANDHOLE / IDENTIFICATION ORIENTATION DETAIL

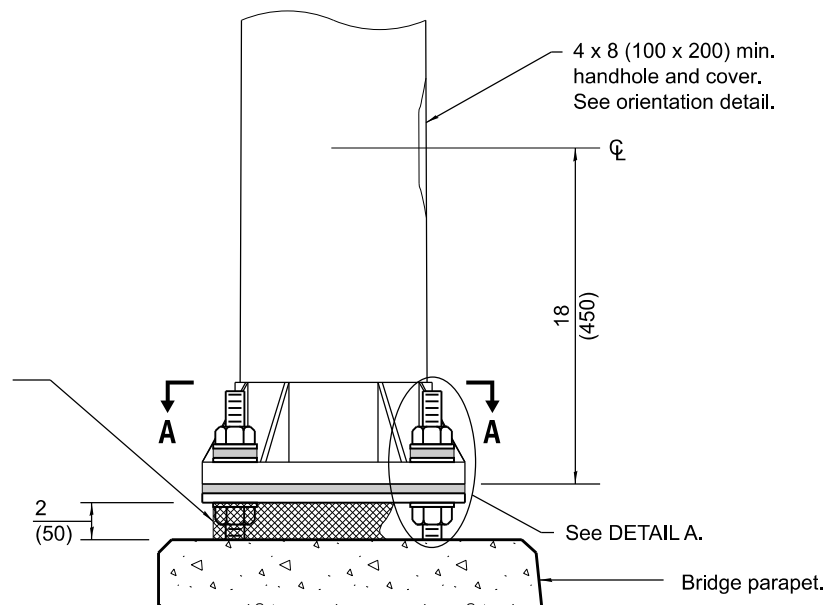


HANDHOLE DETAIL



ELEVATION AT CONCRETE FOUNDATION, METAL FOUNDATION OR RETAINING WALL

① Omit leveling nuts when breakaway devices are required.



ELEVATION AT BRIDGE PARAPET POLE BASE DETAILS

LIGHT POLE ALUMINUM MAST ARM

(Sheet 2 of 2)

STANDARD 830001-03