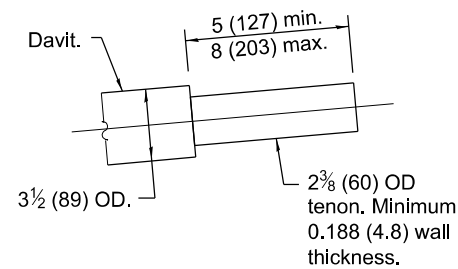
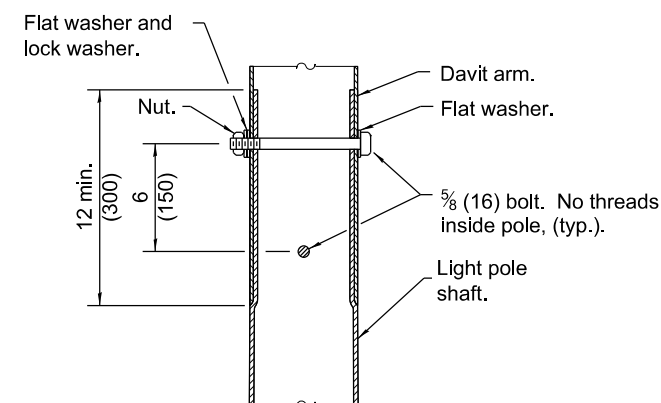
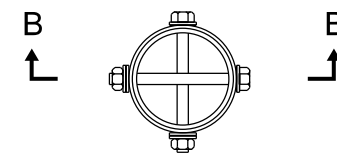


POLE BASE	
MOUNTING HEIGHT	BOLT CIRCLE DIAMETER
35' (10.7 m) or less	11½ (290)
Greater than 35' (10.7 m) to 50' (15.2 m)	15 (380)



TENON DETAIL



SECTION B-B

POLE LOWER SHAFT			
MOUNTING HEIGHT	LOWER SHAFT LENGTH ①	MINIMUM SHAFT DIAMETER	MINIMUM WALL THICKNESS
30' (9.1 m)	21'-1" (6.4 m)	8 tapered to 6 (200 to 114)	0.25 (6)
35' (10.7 m)	26'-1" (7.9 m)	8 tapered to 6 (200 to 114)	0.25 (6)
40' (12.2 m)	31'-1" (9.5 m)	10 tapered to 6 (250 to 150)	0.25 (6)
45' (13.7 m)	36'-1" (11.0 m)	10 tapered to 6 (250 to 150)	0.25 (6)
50' (15.2 m)	41'-1" (12.5 m)	10 tapered to 6 (250 to 150)	0.312 (8)

- ① Lower shaft length shall be from the bottom of the pole base to the bottom of the slip joint.
- ② 5° max. for unloaded pole, 1.5° max. for loaded pole.

GENERAL NOTES

See Standard 836001 for Light Pole Foundation and grounding electrode.

See Standard 720001 for pole identification banding to pole.

Voids in light pole base shall be sealed to prevent rodent entry.

Provide breakaway devices where required.

Where anchor rods on existing bridge parapets are too short to mount poles as shown, install leveling plate directly on concrete and level with stainless steel washers.

All dimensions are in inches (millimeters) unless otherwise shown.

DAVIT LIGHT POLE

(Single or twin mount)

* Unless directed otherwise by the Engineer.

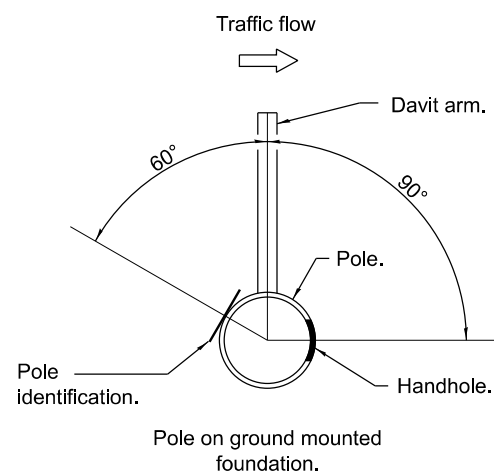
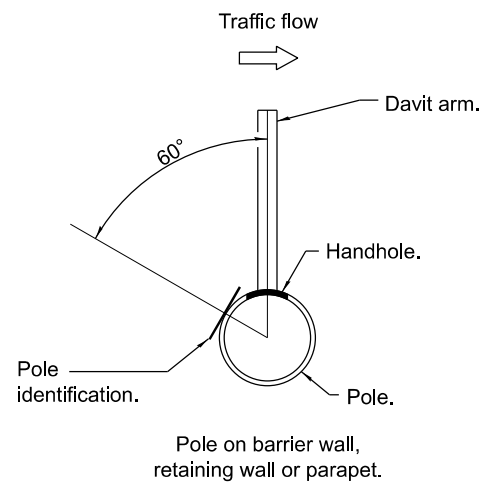
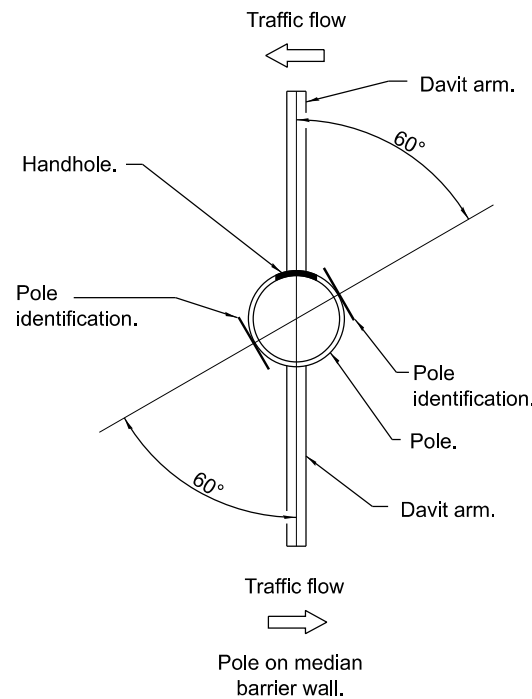
	Illinois Department of Transportation
APPROVED _____ January 1, 2019	ISSUED 1-1-12
ELECTRICAL AND MECHANICAL UNIT CHIEF	
APPROVED _____ January 1, 2019	
	ENGINEER OF DESIGN AND ENVIRONMENT

DATE	REVISIONS
1-1-19	Revised standard to comply with the 2013 version of AASHTO.
1-1-17	Added notes ③ and ④.

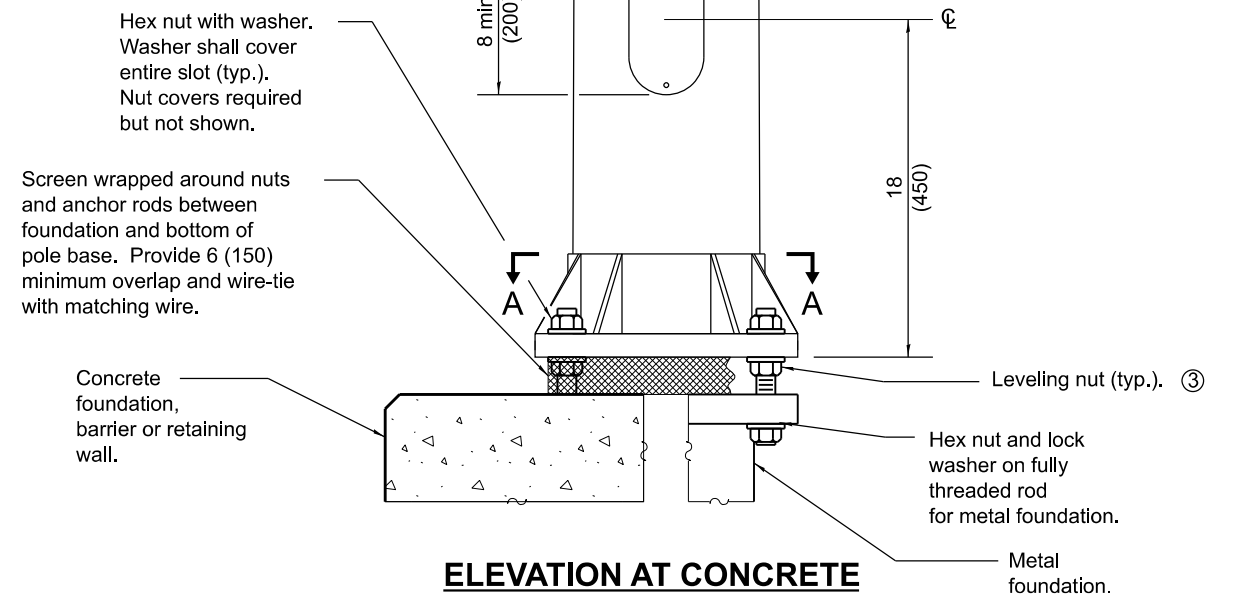
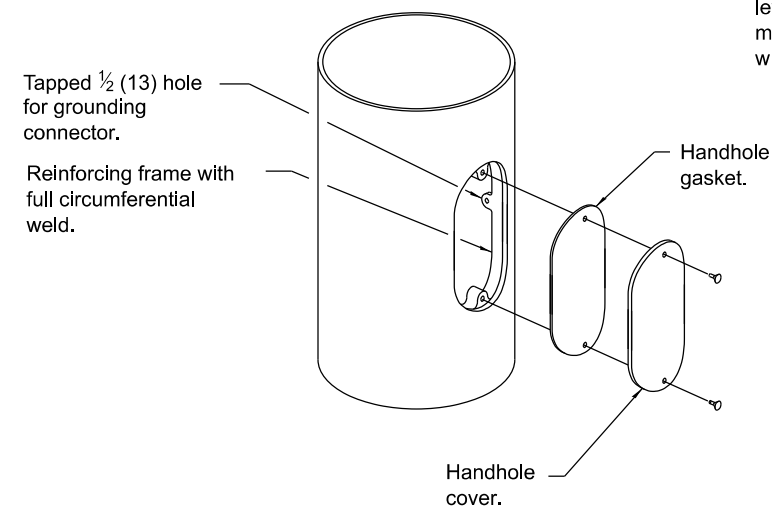
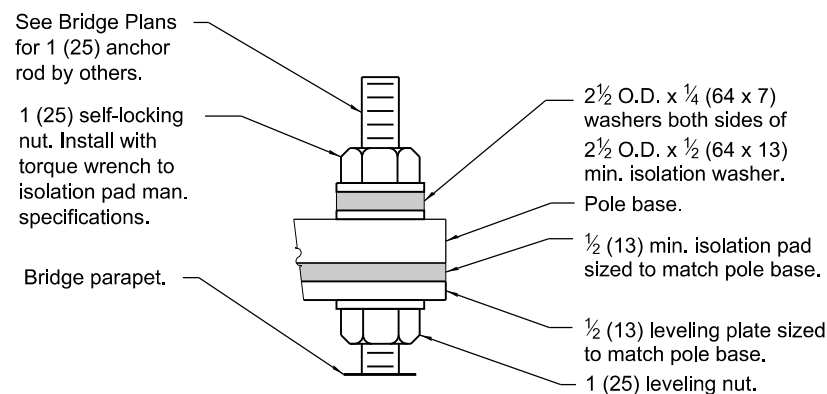
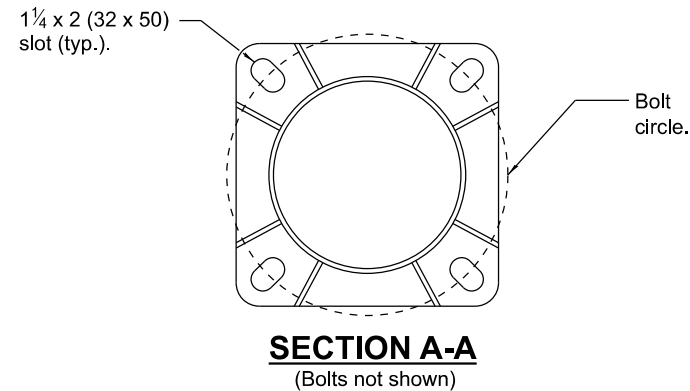
**LIGHT POLE
ALUMINUM DAVIT ARM**

(Sheet 1 of 2)

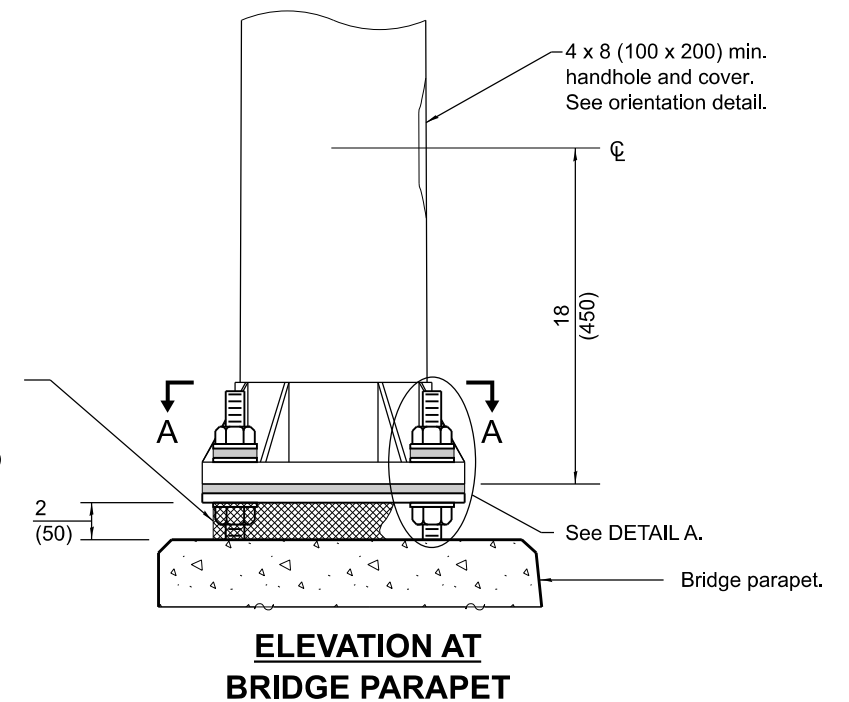
STANDARD 830006-05



HANDHOLE / IDENTIFICATION ORIENTATION DETAIL



③ Omit leveling nuts when breakaway devices are required.



POLE BASE DETAILS

LIGHT POLE ALUMINUM DAVIT ARM

(Sheet 2 of 2)

STANDARD 830006-05