

**MAST ARM  
LIGHT POLE**

(Single or twin mount)

\* Unless directed otherwise by the Engineer.

POLE		
MOUNTING HEIGHT	MINIMUM SHAFT DIAMETER	MINIMUM WALL THICKNESS
35' (10.7 m) or less	8 tapered to 4 (200 to 100)	10 guage
Greater than 35' (10.7 m) to 50' (15.2 m)	10 tapered to 4 (250 to 100)	7 guage

BASE PLATE		
MOUNTING HEIGHT	BOLT CIRCLE DIAMETER	BASE PLATE THICKNESS
35' (10.7 m) or less	11½ (290)	1 (25)
Greater than 35' (10.7 m) to 50' (15.2 m)	15 (380)	1¼ (32)

**GENERAL NOTES**

See Standard 836001 for Light Pole Foundation and grounding electrode.

See Standard 720001 for pole identification banding to pole.

Provide breakaway devices where required.

Where anchor rods on existing bridge parapets are too short to mount poles as shown, install leveling plate directly on concrete and level with stainless steel washers.


All dimensions are in inches (millimeters) unless otherwise shown.

DATE	REVISIONS
1-1-19	Revised POLE and BASE POLE tables.
1-1-14	Added pole mounted on bridge parapet. Modified attachment of screen.

**LIGHT POLE  
STEEL MAST ARM**

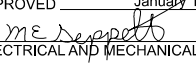
(Sheet 1 of 2)

**STANDARD 830011-03**




Illinois Department of Transportation

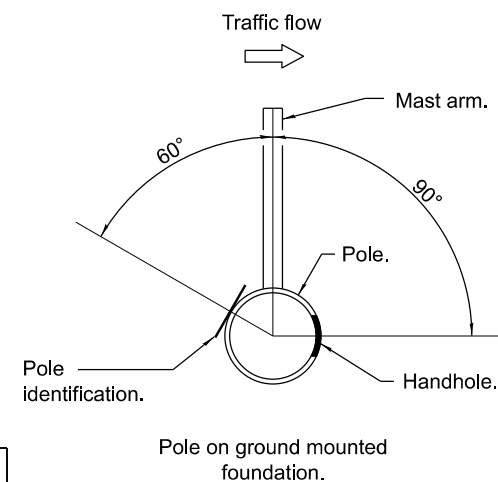
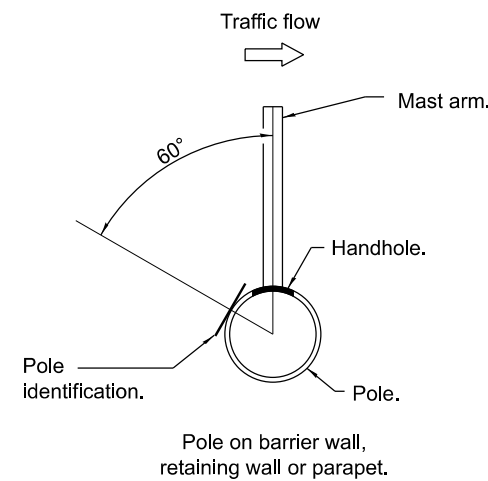
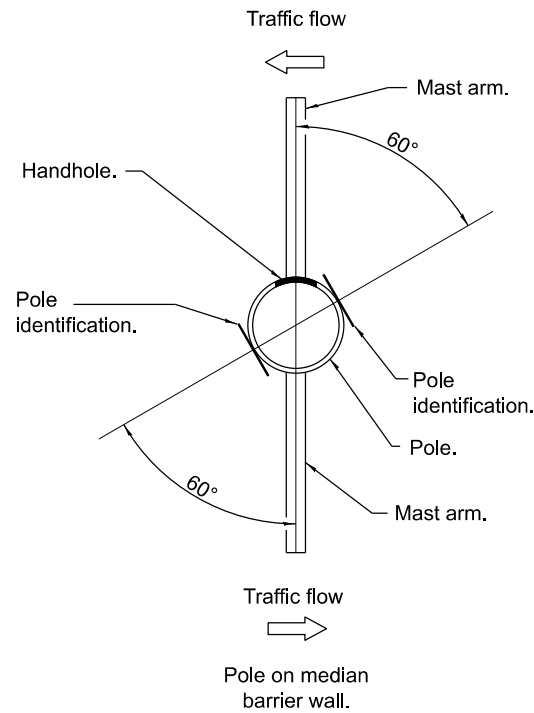
APPROVED January 1, 2019

  
ELECTRICAL AND MECHANICAL UNIT CHIEF

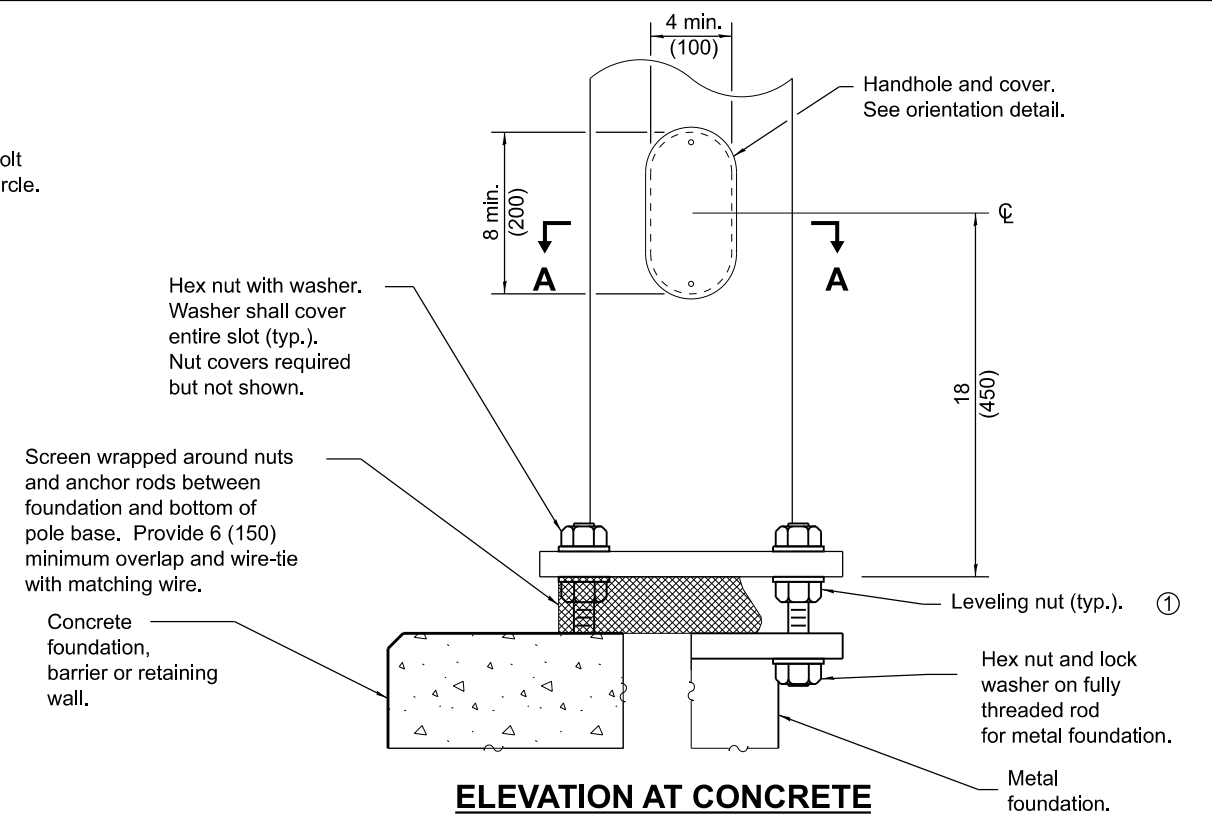
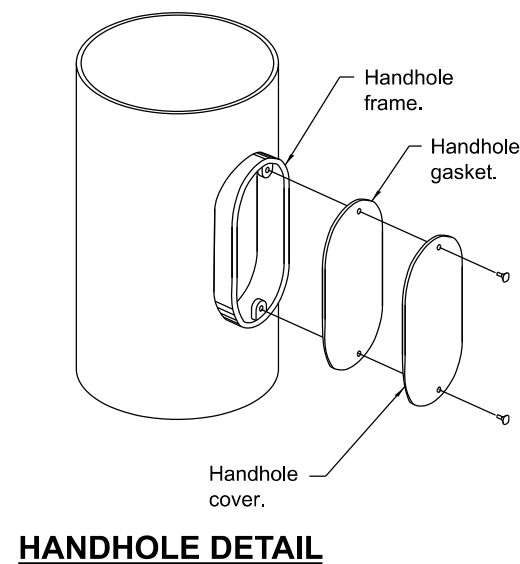
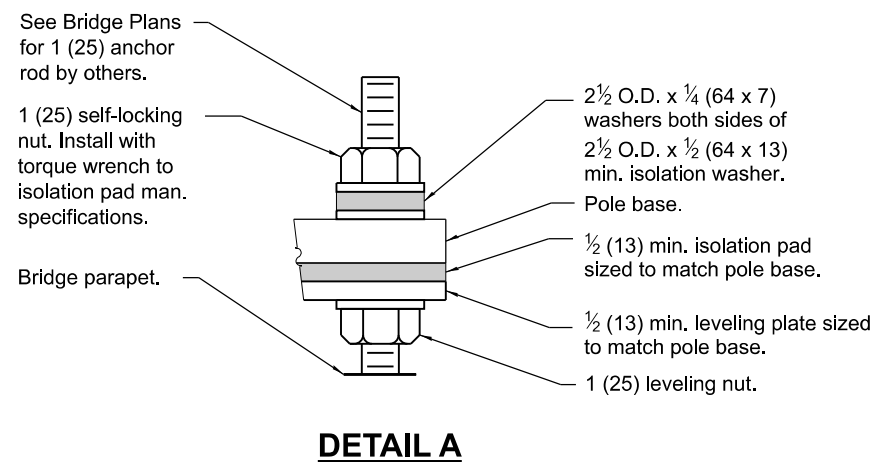
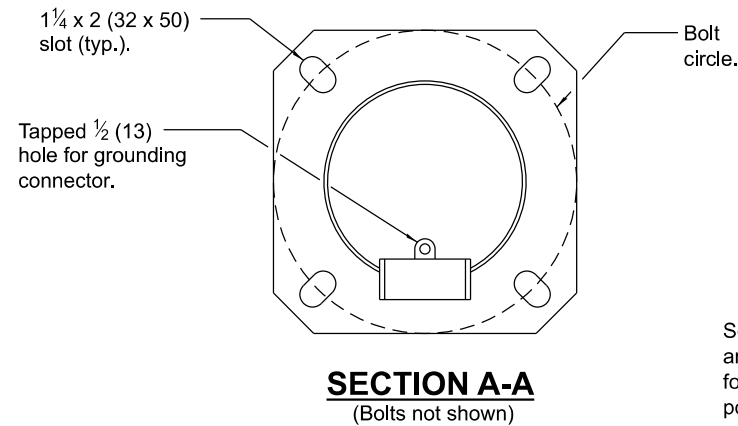
APPROVED January 1, 2019

  
ENGINEER OF DESIGN AND ENVIRONMENT

ISSUED 1-1-12

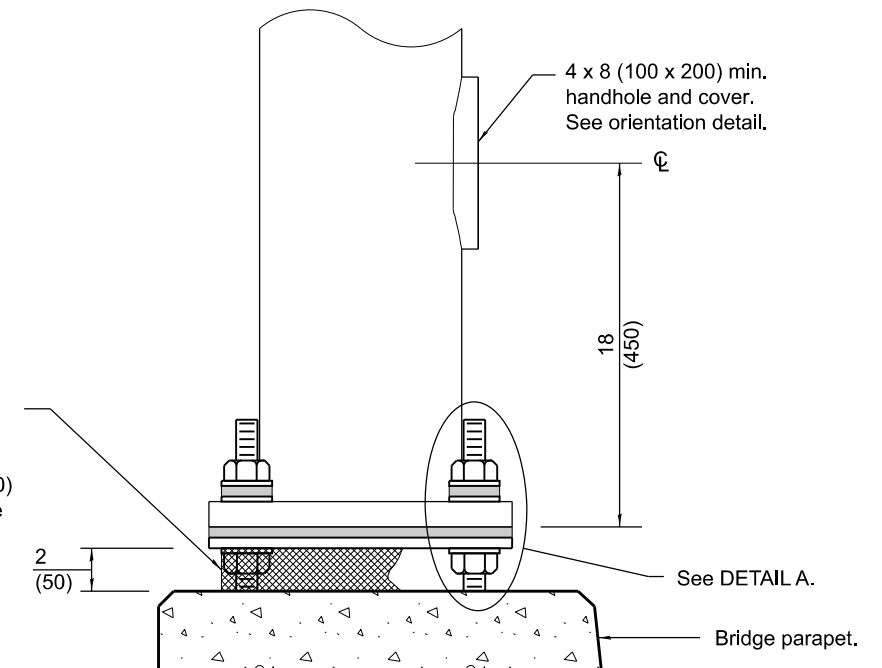


### HANDHOLE / IDENTIFICATION ORIENTATION DETAIL



### ELEVATION AT CONCRETE FOUNDATION, METAL FOUNDATION OR RETAINING WALL

① Omit leveling nuts when breakaway devices are required.



### ELEVATION AT BRIDGE PARAPET POLE BASE DETAILS

## LIGHT POLE STEEL MAST ARM

(Sheet 2 of 2)

STANDARD 830011-03