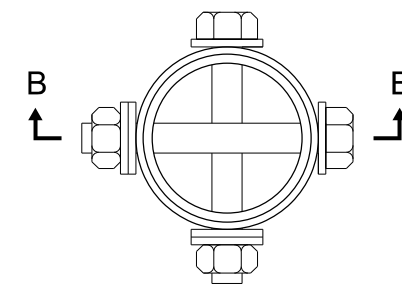
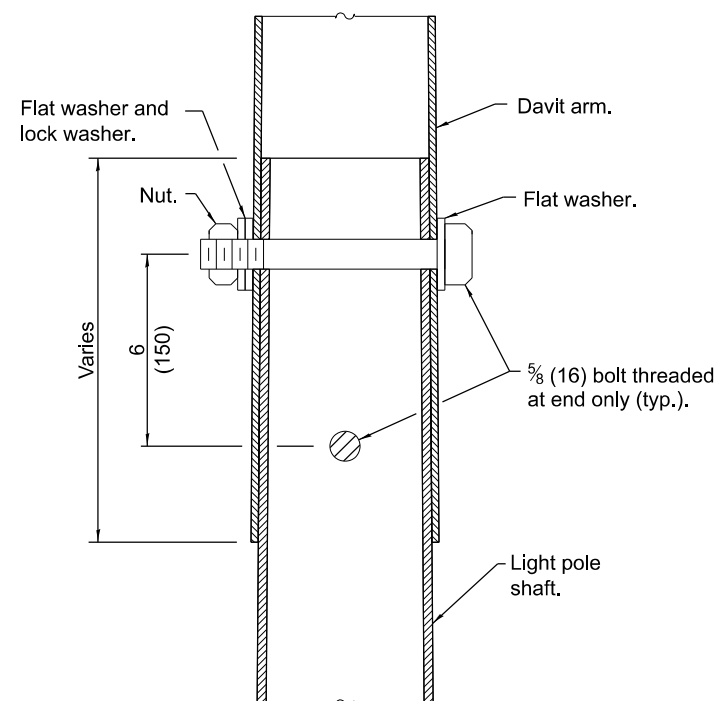


BASE PLATE		
MOUNTING HEIGHT	BOLT CIRCLE DIAMETER	BASE PLATE THICKNESS
35' (10.7 m) or less	11½ (290)	1 (25)
Greater than 35' (10.7 m) to 50' (15.2 m)	15 (380)	1¼ (32)



SECTION A-A



SECTION B-B

POLE LOWER SHAFT			
MOUNTING HEIGHT	LOWER SHAFT LENGTH ①	MINIMUM SHAFT DIAMETER	MINIMUM WALL THICKNESS
30' (9.1 m)	21'-1" (6.4 m)	8 tapered to 6 (200 to 114)	10 gauge
35' (10.7 m)	26'-1" (7.9 m)	8 tapered to 6 (200 to 114)	10 gauge
40' (12.2 m)	31'-1" (9.5 m)	10 tapered to 6 (250 to 150)	7 gauge
45' (13.7 m)	36'-1" (11.0 m)	10 tapered to 6 (250 to 150)	7 gauge
50' (15.2 m)	41'-1" (12.5 m)	10 tapered to 6 (250 to 150)	7 gauge

- ① Lower shaft length shall be from the bottom of the pole base to the bottom of the slip joint.
- ② 3° max. for unloaded pole, 1.5° max. for loaded pole.

GENERAL NOTES

See Standard 836001 for Light Pole Foundation and grounding electrode.

See Standard 720001 for pole identification banding to pole.

Provide breakaway devices where required.

Where anchor rods on existing bridge parapets are too short to mount poles as shown, install leveling plate directly on concrete and level with stainless steel washers.

All dimensions are in inches (millimeters) unless otherwise shown.

Illinois Department of Transportation

APPROVED January 1, 2019
ELECTRICAL AND MECHANICAL UNIT CHIEF

APPROVED January 1, 2019
ENGINEER OF DESIGN AND ENVIRONMENT

ISSUED 1-1-12

DAVIT LIGHT POLE

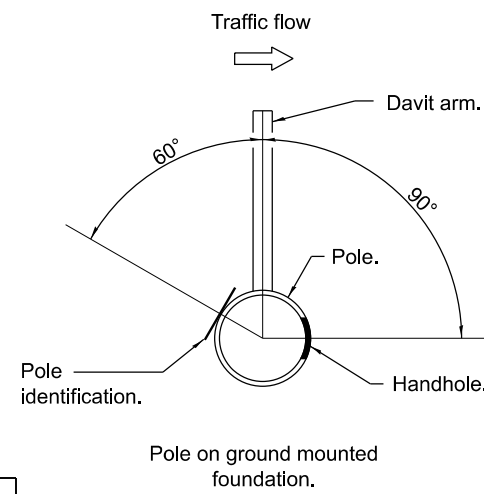
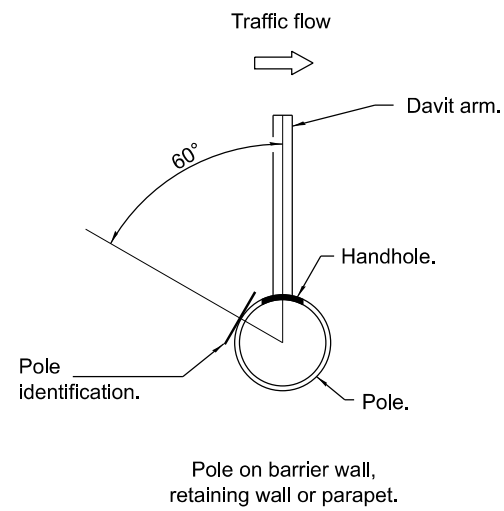
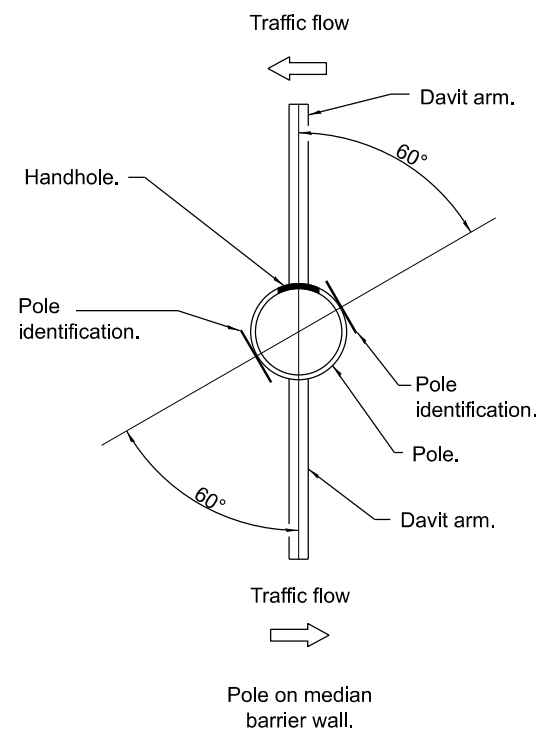
(Single or twin mount)
* Unless directed otherwise by the Engineer.

DATE	REVISIONS
1-1-19	Revised BASE PLATE table.
1-1-14	Added pole mounted on bridge parapet. Modified attachment of screen.

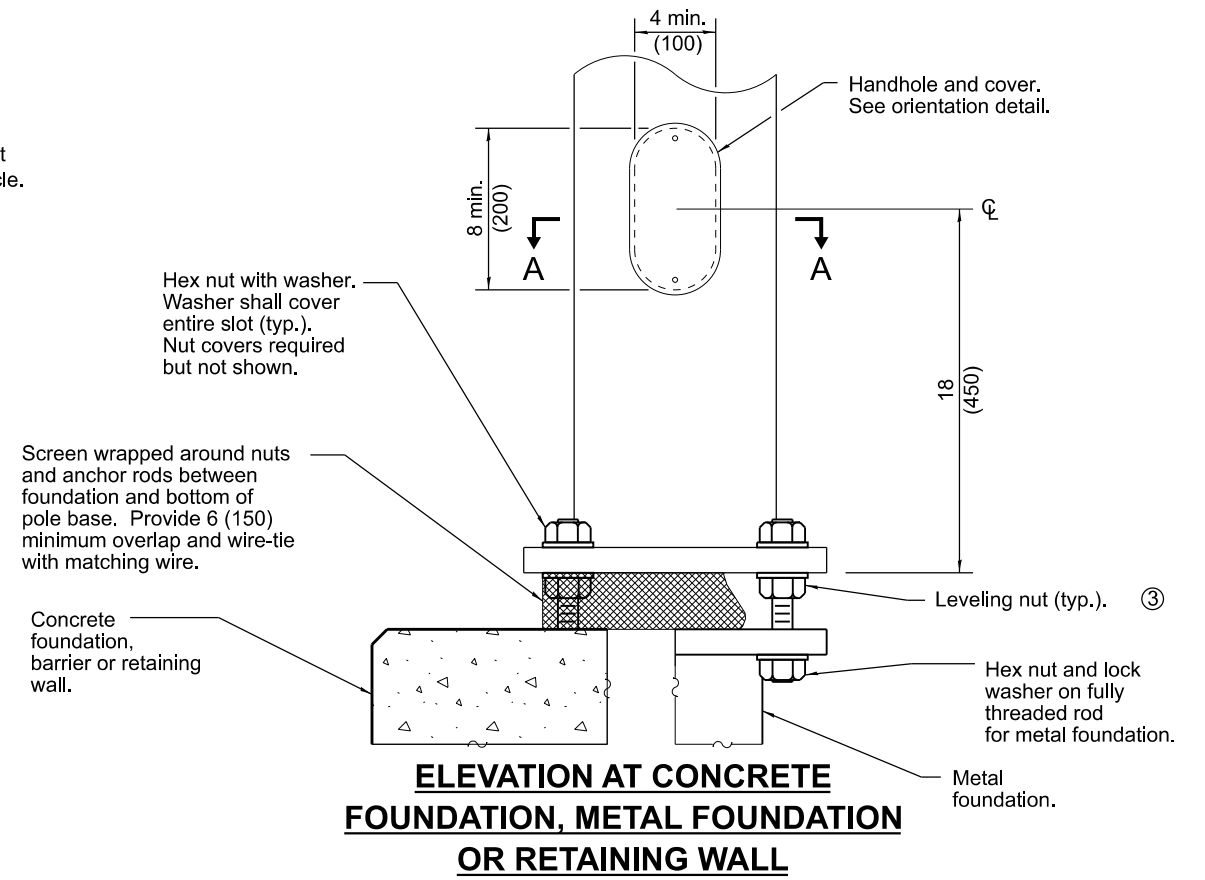
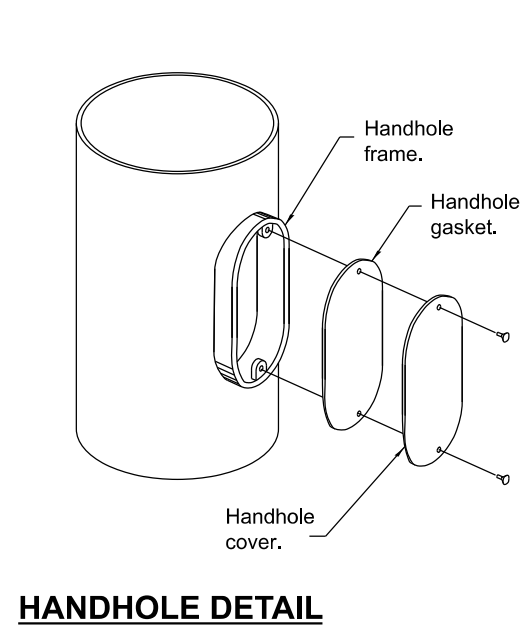
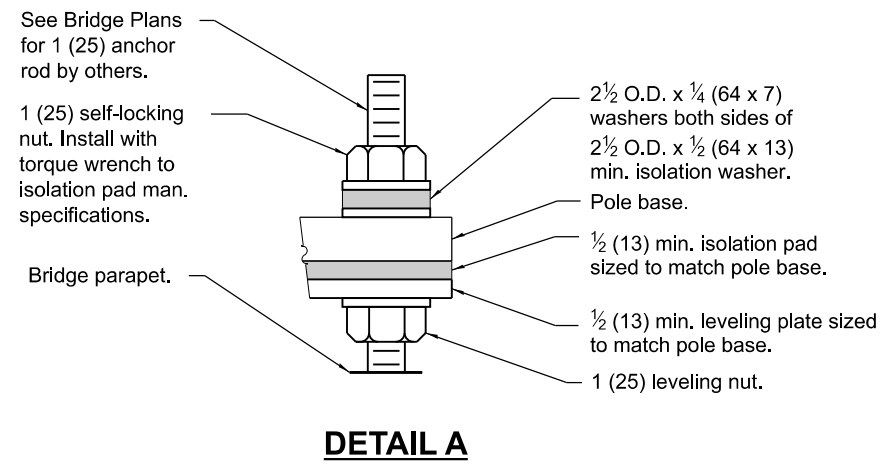
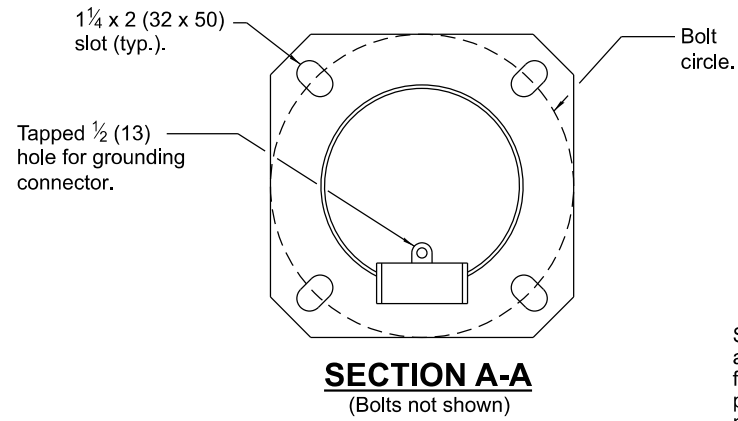
LIGHT POLE STEEL DAVIT ARM

(Sheet 1 of 2)

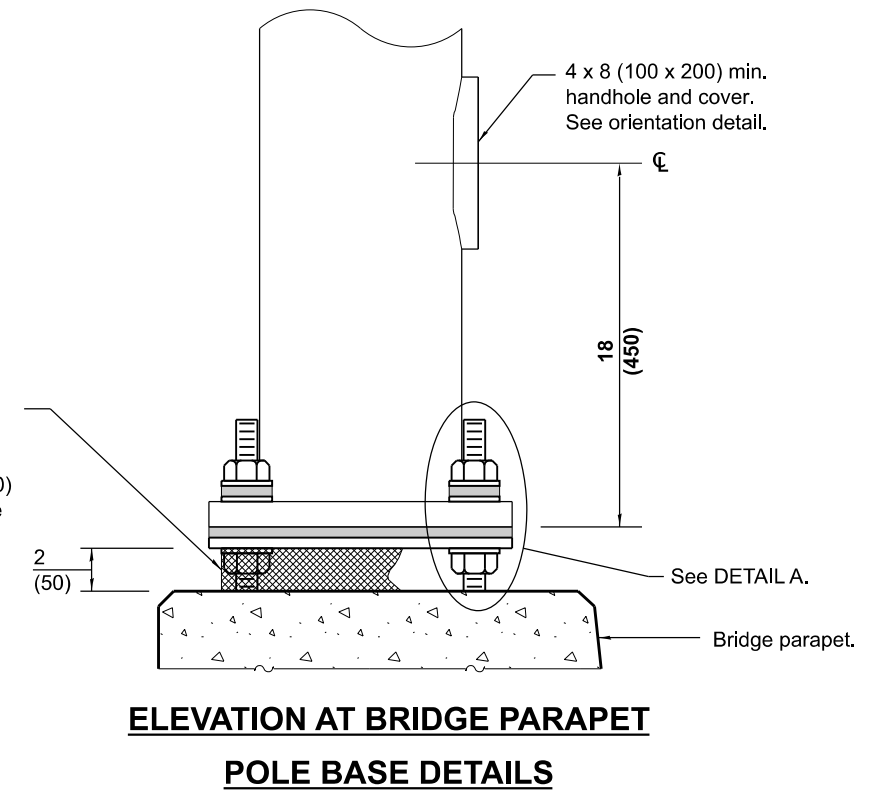
STANDARD 830016-03



HANDHOLE / IDENTIFICATION ORIENTATION DETAIL



③ Omit leveling nuts when breakaway devices are required.



LIGHT POLE STEEL DAVIT ARM

(Sheet 2 of 2)

STANDARD 830016-03