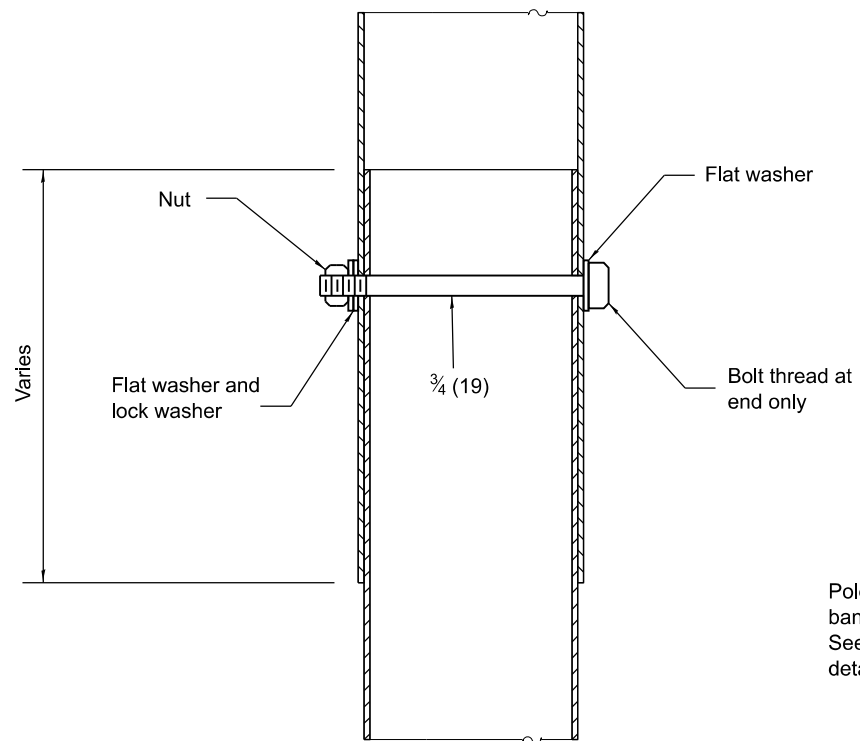
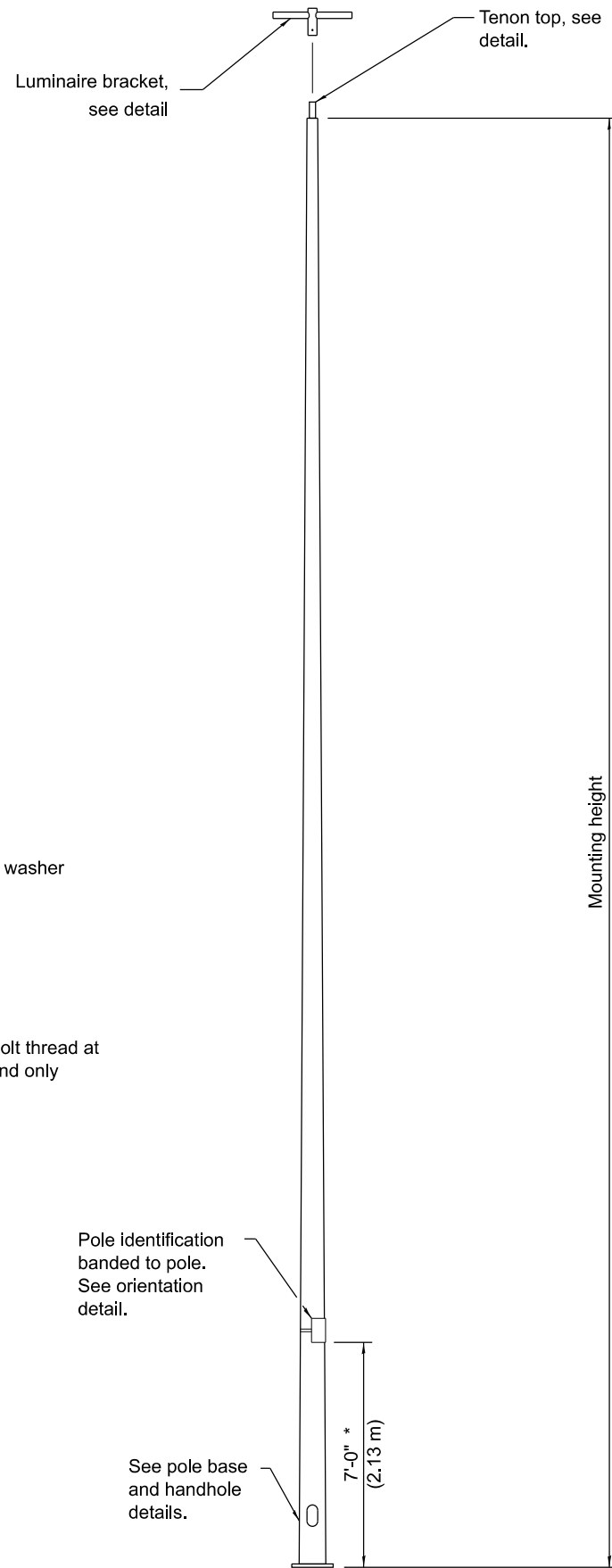


SECTION A-A



SECTION B-B



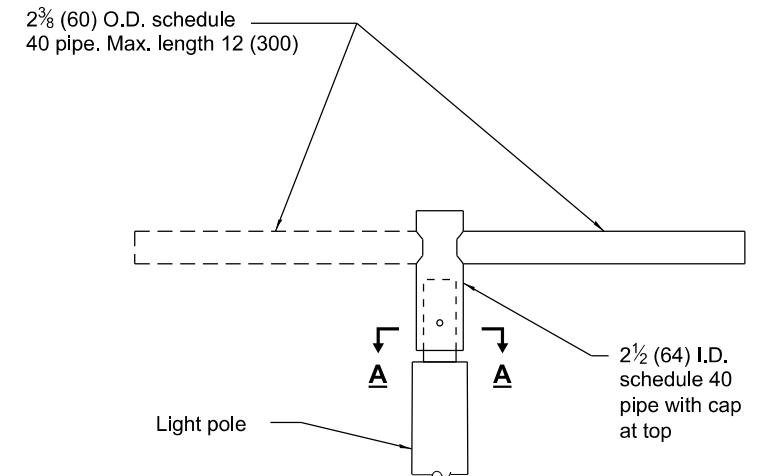
TENON TOP LIGHT POLE

(Single or twin mount)

* Unless directed otherwise by the Engineer

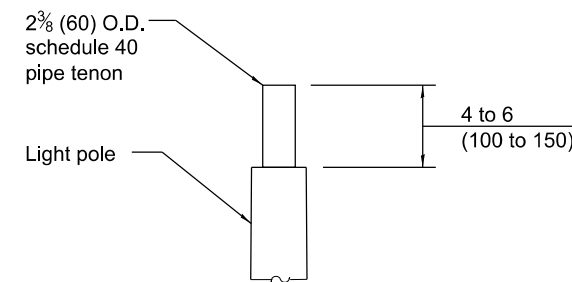
| BASE PLATE | | |
|---|----------------------|----------------------|
| MOUNTING HEIGHT | BOLT CIRCLE DIAMETER | BASE PLATE THICKNESS |
| 35' (10.7 m) or less | 11½ (290) | 1 (25) |
| Greater than 35' (10.7 m) to 50' (15.2 m) | 15 (380) | 1¼ (32) |

| LIGHT POLE | | |
|---|------------------------------|------------------------|
| MOUNTING HEIGHT | MINIMUM SHAFT DIAMETER | MINIMUM WALL THICKNESS |
| 35' (10.7 m) or less | 8 tapered to 4 (200 to 100) | 10 guage |
| Greater than 35' (10.7 m) to 50' (15.2 m) | 10 tapered to 4 (250 to 100) | 7 guage |



LUMINAIRE BRACKET DETAIL

(Single or Twin Arm)



TENON DETAIL

GENERAL NOTES

See Standard 836001 for Light Pole Foundation and grounding electrode.

See Standard 720001 for pole identification banding to pole.

Provide breakaway devices where required.

Where anchor rods on existing bridge parapets are too short to mount poles as shown, install leveling plate directly on concrete and level with stainless steel washers.

All dimensions are in inches (millimeters) unless otherwise shown.

| DATE | REVISIONS |
|--------|--|
| 1-1-24 | Replaced 'bullhorn' bracket with horizontal bracket. |
| 1-1-19 | Revised BASE PLATE and LIGHT POLE tables. |

**LIGHT POLE
STEEL TENON TOP**

(Sheet 1 of 2)

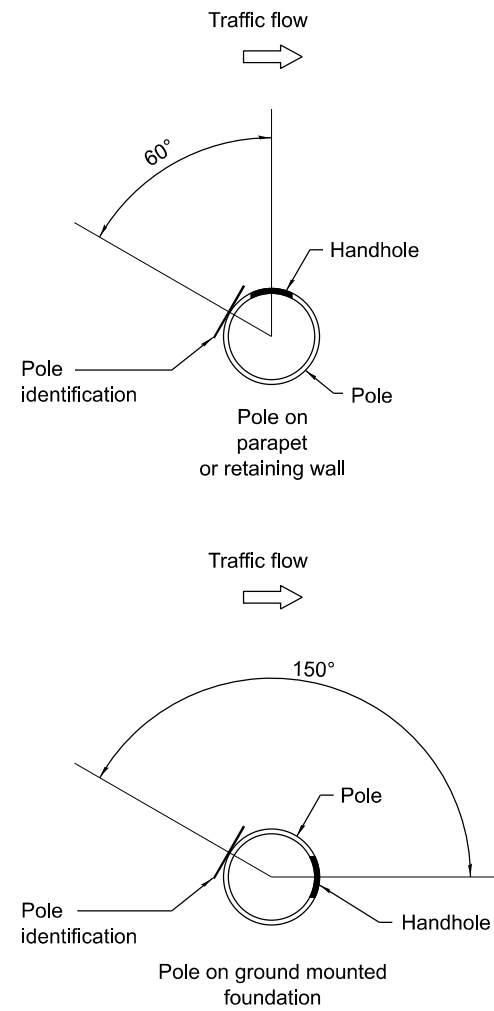
STANDARD 830021-04

Illinois Department of Transportation

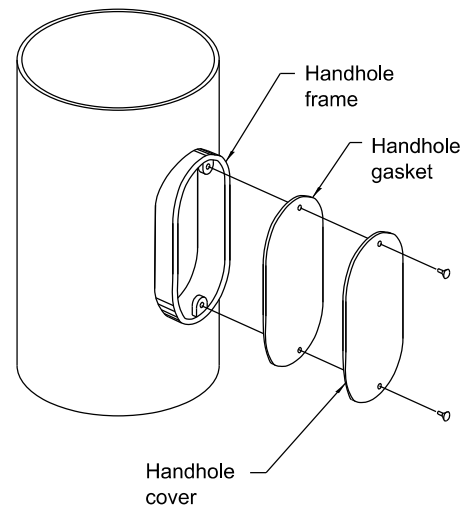
APPROVED January 1, 2024
Bernard A. Griffin
 ELECTRICAL AND MECHANICAL UNIT CHIEF

APPROVED January 1, 2024
John C. ...
 ENGINEER OF DESIGN AND ENVIRONMENT

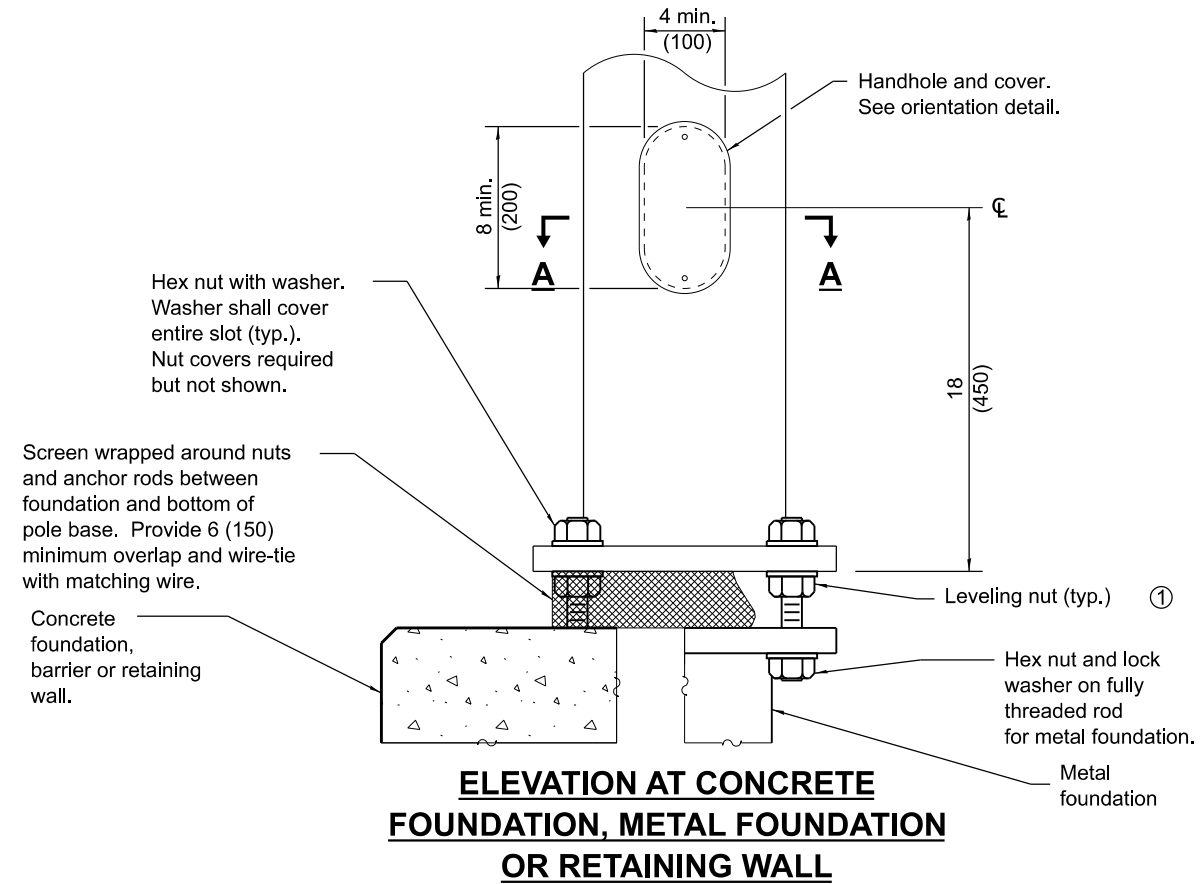
ISSUED 1-1-12



HANDHOLE / IDENTIFICATION ORIENTATION DETAIL

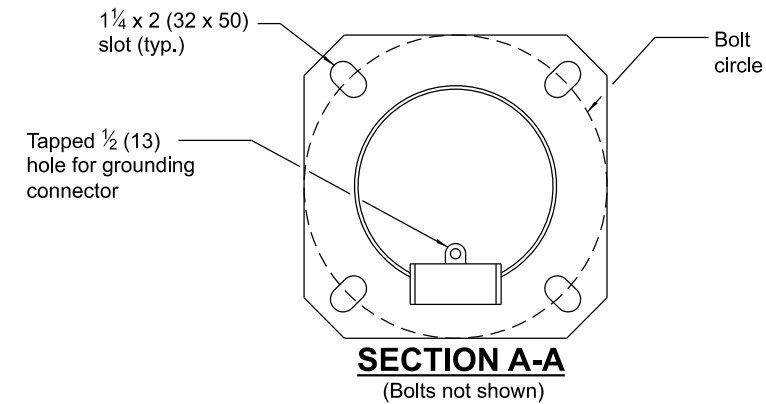


HANDHOLE DETAIL



ELEVATION AT CONCRETE FOUNDATION, METAL FOUNDATION OR RETAINING WALL

① Omit leveling nuts when breakaway devices are required.

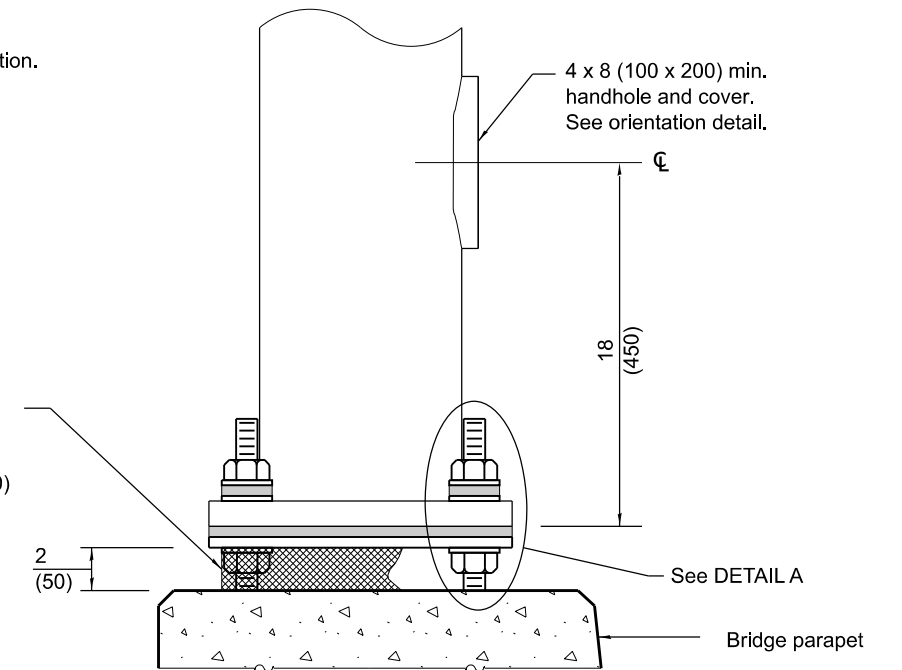
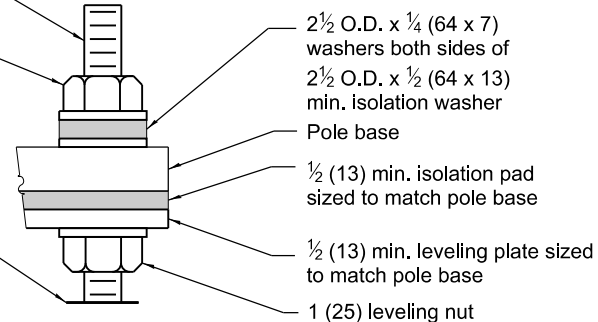


SECTION A-A
(Bolts not shown)

See Bridge Plans for 1 (25) anchor rod by others
1 (25) self-locking nut. Install with torque wrench to isolation pad man. specifications.

Bridge parapet

DETAIL A



ELEVATION AT BRIDGE PARAPET POLE BASE DETAILS

LIGHT POLE STEEL TENON TOP

(Sheet 2 of 2)

STANDARD 830021-04

Illinois Department of Transportation

APPROVED January 1, 2024
Bernard A. Saffari
ELECTRICAL AND MECHANICAL UNIT CHIEF

APPROVED January 1, 2024
Scott Chee
ENGINEER OF DESIGN AND ENVIRONMENT

ISSUED 1-1-12