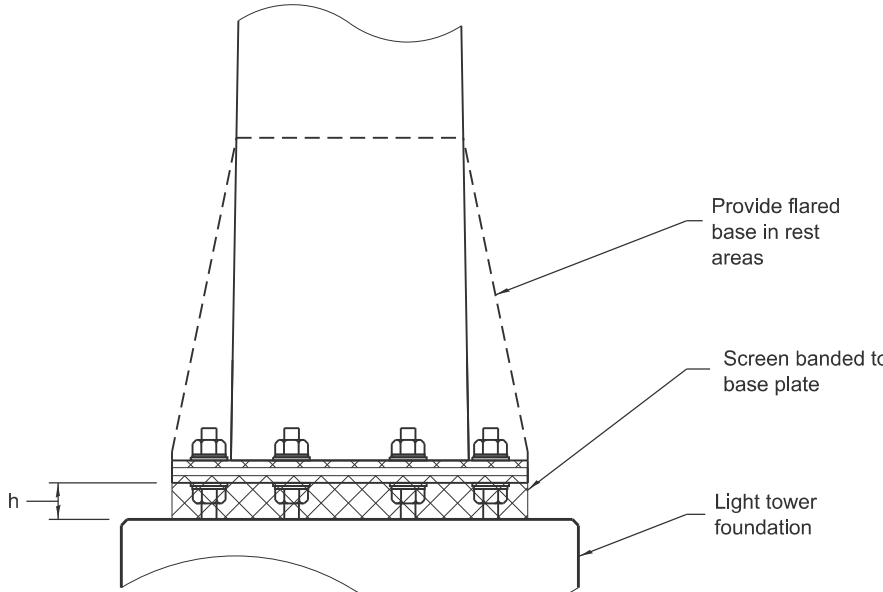
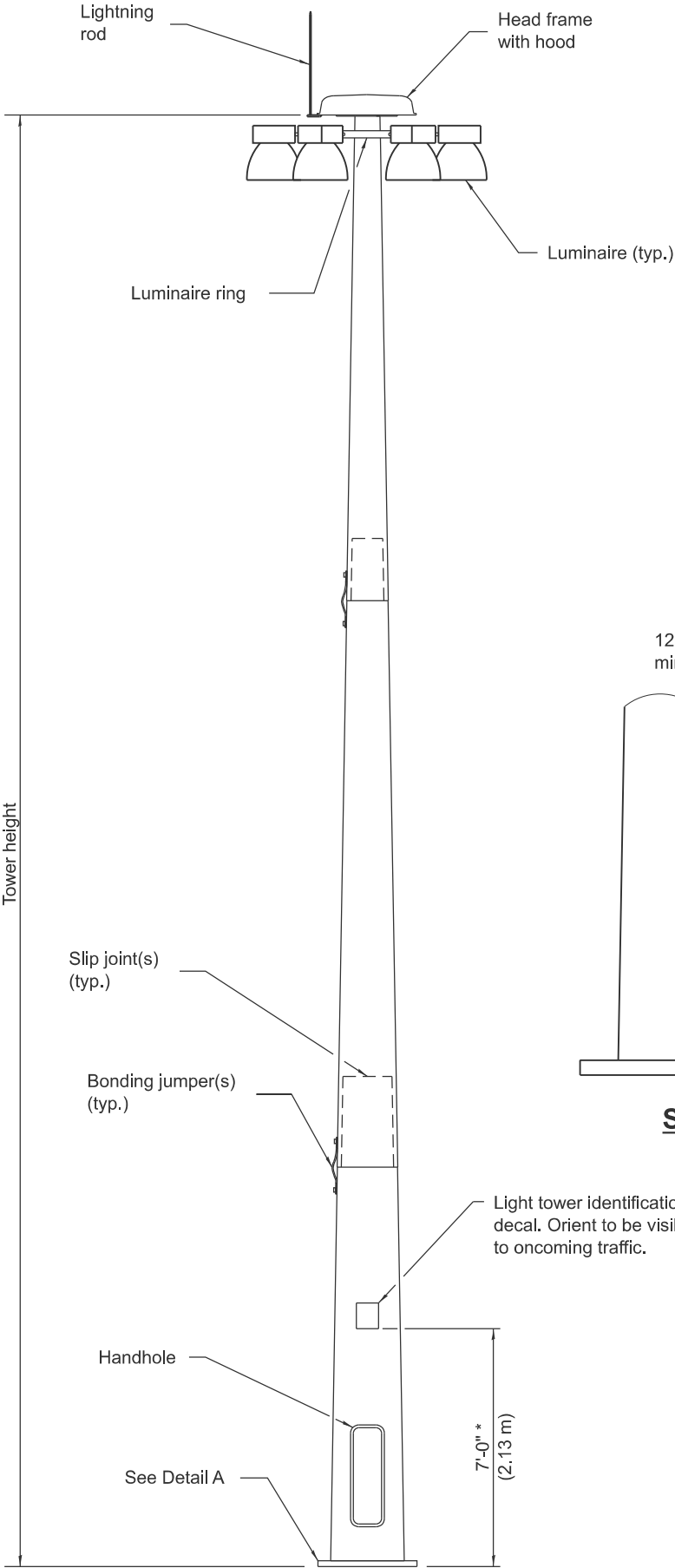


**LUMINAIRE RING
WIRING DIAGRAM**

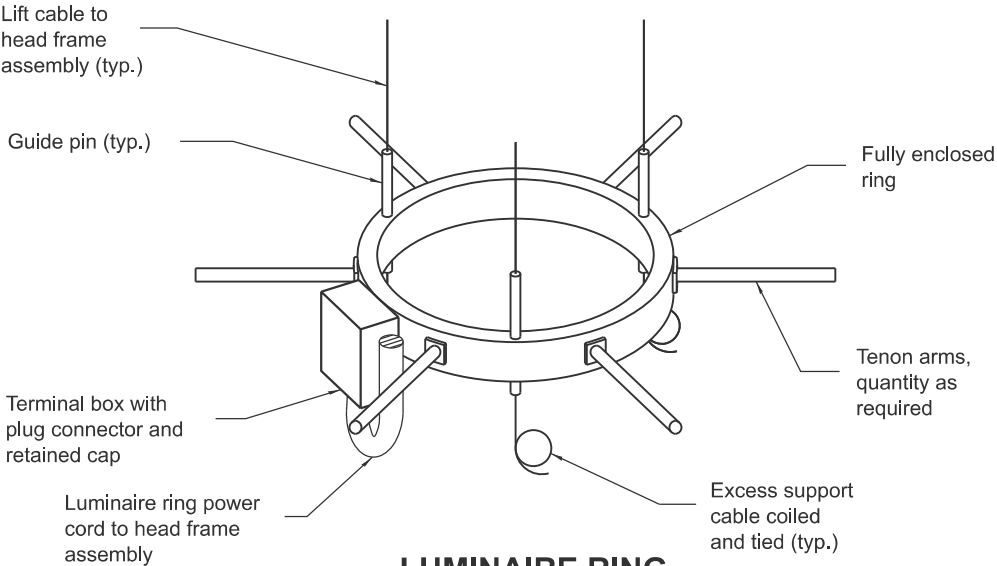


DETAIL A

h = Anchor rod dia. + leveling nut and washer thickness

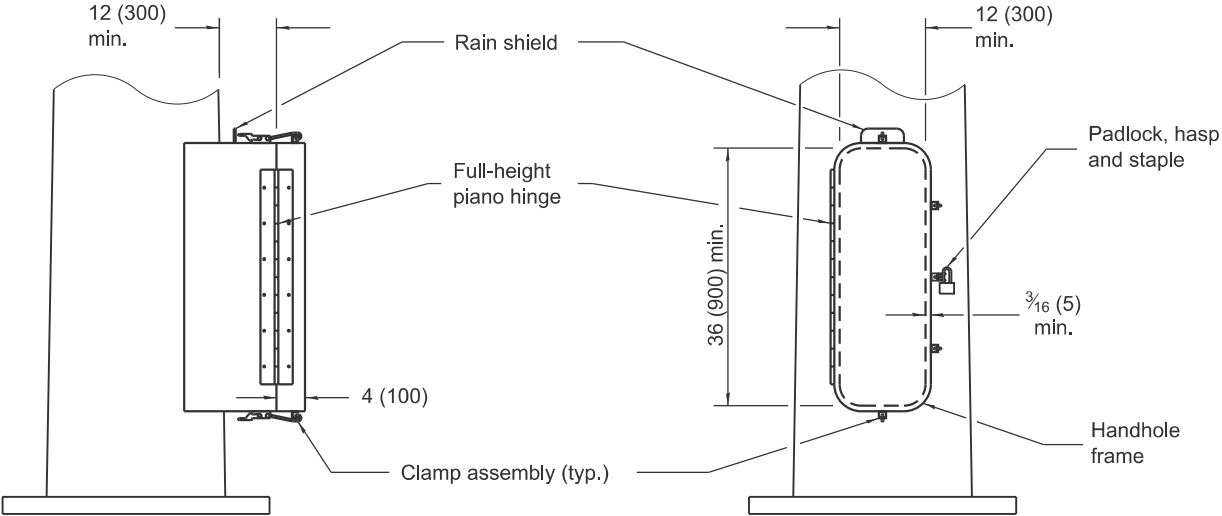


LIGHT TOWER



LUMINAIRE RING

(Two or three lift cable system permitted, three lift cable type shown.)



SIDE

FRONT

HANDHOLE

GENERAL NOTES

See Standard 837001 for High Mast Tower Foundation and grounding electrode.

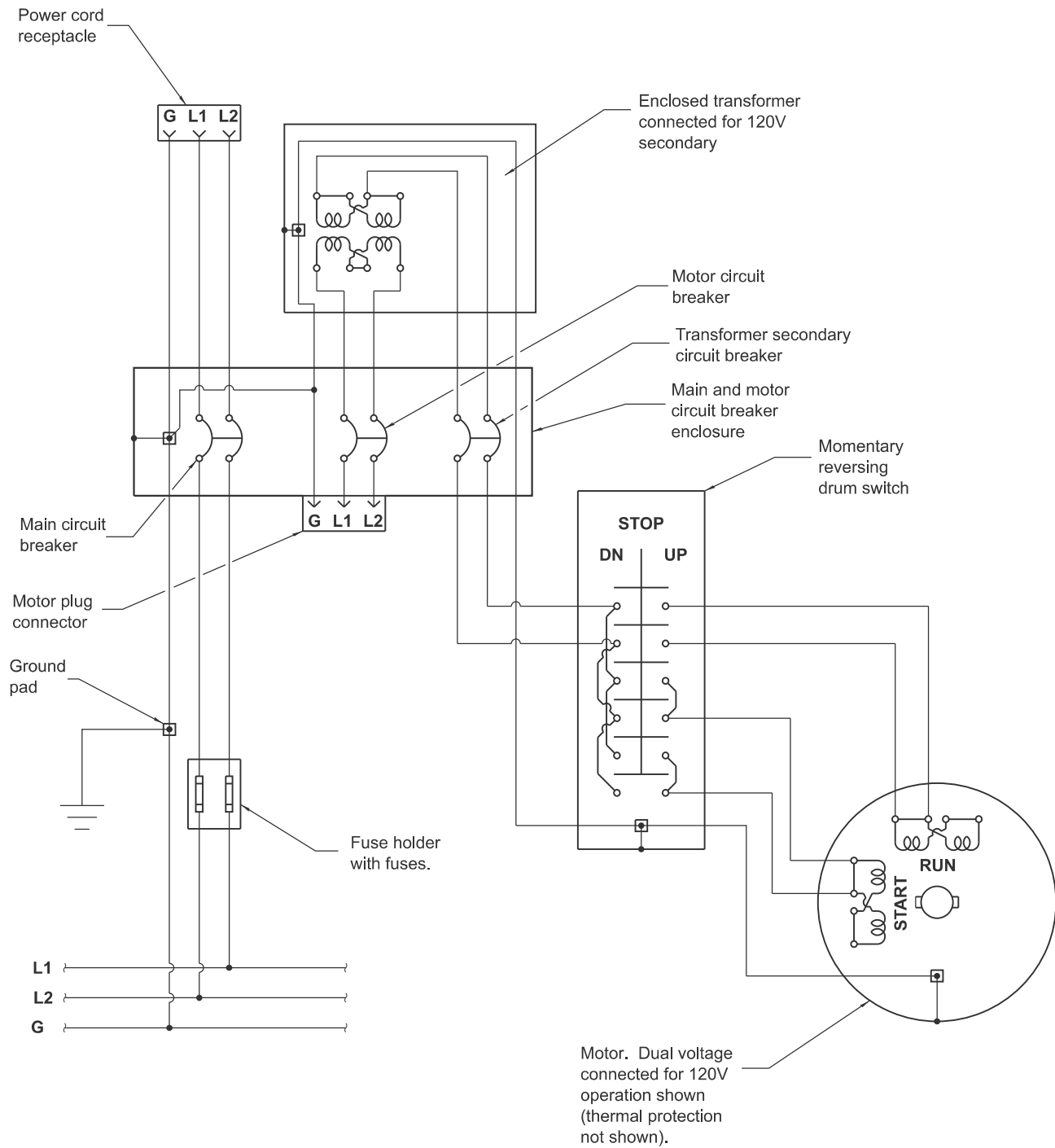
All dimensions are in inches (millimeters) unless otherwise shown.

DATE	REVISIONS
1-1-25	Omitted the surge protective device in the base of the light tower.
1-1-24	Omitted option for horizontal or multi-mount of luminaires.

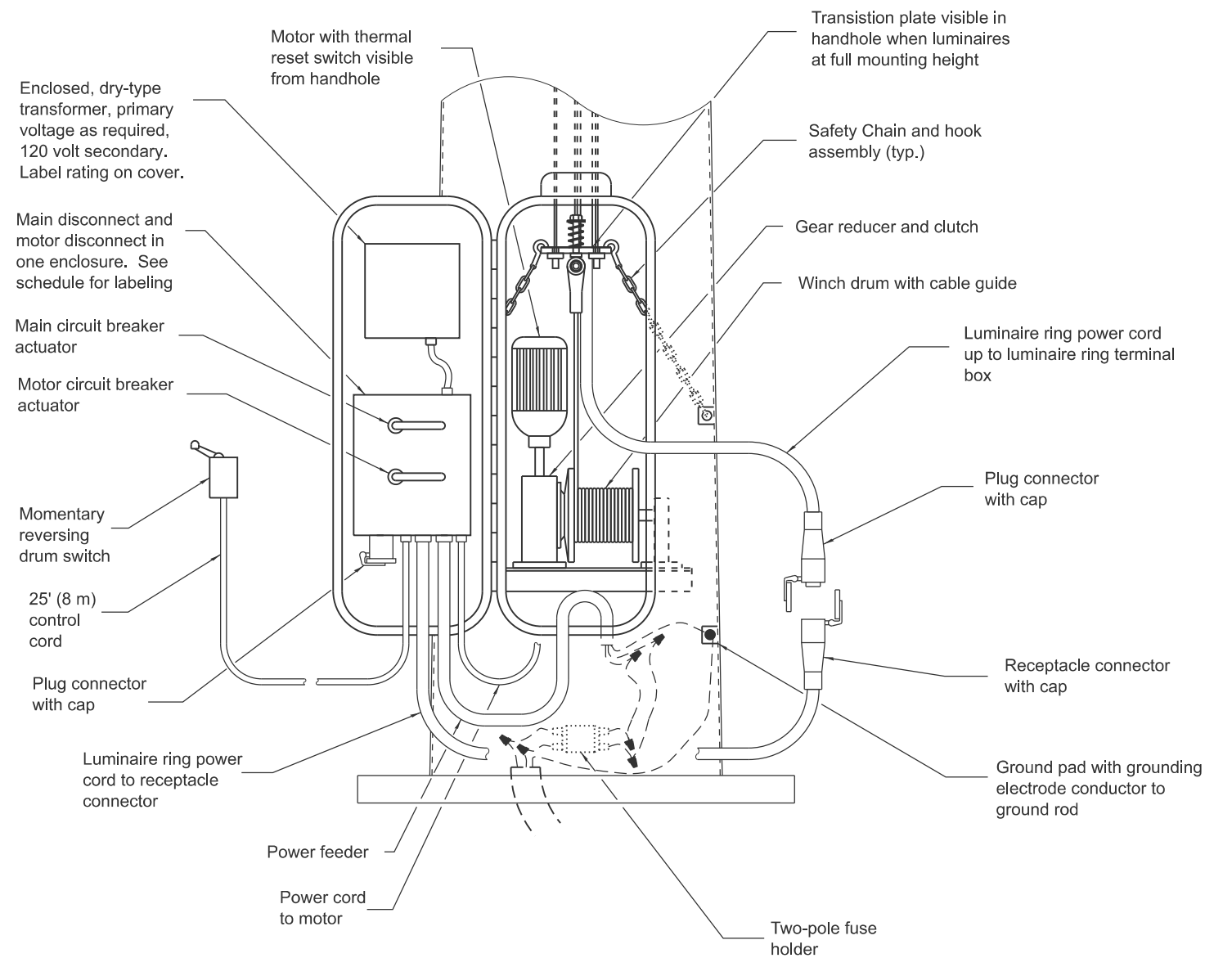
LIGHT TOWER

(Sheet 1 of 2)

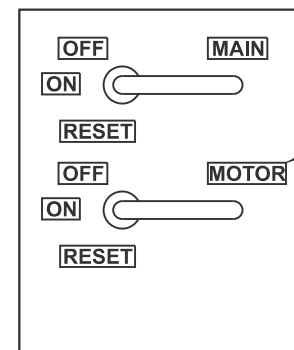
STANDARD 835001-03



LOWERING SYSTEM WIRING DIAGRAM



LOWERING AND SUPPORT MECHANISM



Engraved plate secured to cover (typ.).

DISCONNECT SCHEDULE