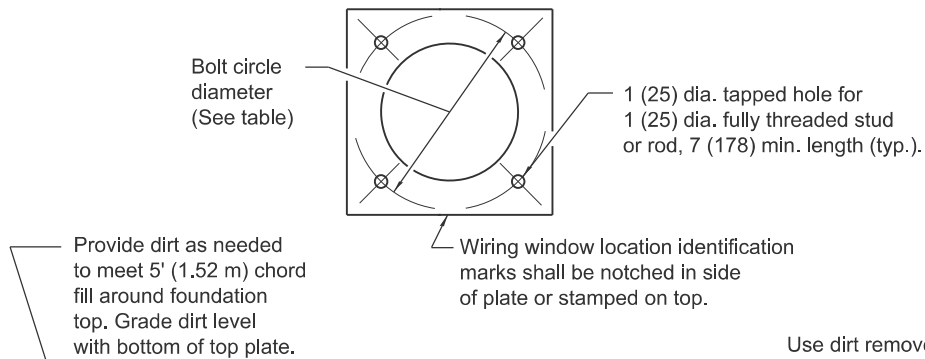
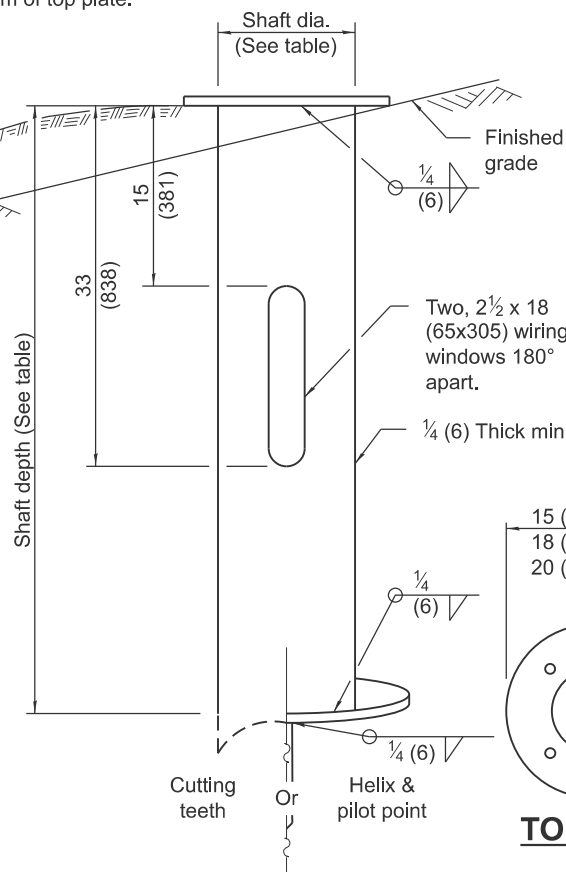


LIGHT POLE MOUNTING HEIGHT	METAL FOUNDATION				CONCRETE FOUNDATION		
	BOLT CIRCLE DIAMETER	SHAFT DIAMETER	SHAFT DEPTH	TOP PLATE (min)	SHAFT DIAMETER	SHAFT DEPTH	ANCHOR ROD LENGTH
≤30' (9.1 m)	11½ (292)	8⅝ (220)	6' (1.83 m)	12 x 12 x 1 (300 x 300 x 25)	24 (610)	5'-0" (1.52 m)	4'-9" (1.45 m)
31'-35' (9.4 m - 10.7 m)	11½ (292)	8⅝ (220)	6' (1.83 m)	12 x 12 x 1 (300 x 300 x 25)	24 (610)	5'-6" (1.67 m)	5'-3" (1.60 m)
36'-40' (10.9 m - 12.2 m)	15 (381) ②	8⅝ (220)	6' (1.83 m) ①	15 x 15 x 1¼ (375 x 375 x 31)	30 (762)	6'-0" (1.83 m)	5'-9" (1.75 m)
41'-45' (12.5 m - 13.7 m)	15 (381) ②	8⅝ (220)	6' (1.83 m) ①	15 x 15 x 1¼ (375 x 375 x 31)	30 (762)	6'-6" (1.98 m)	6'-3" (1.90 m)
46'-50' (14.0 m - 15.2 m)	15 (381) ②	8⅝ (220)	8' (2.44 m)	15 x 15 x 1¼ (375 x 375 x 31)	30 (762)	7'-0" (2.13 m)	6'-9" (2.00 m)

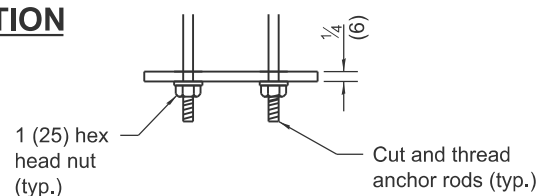
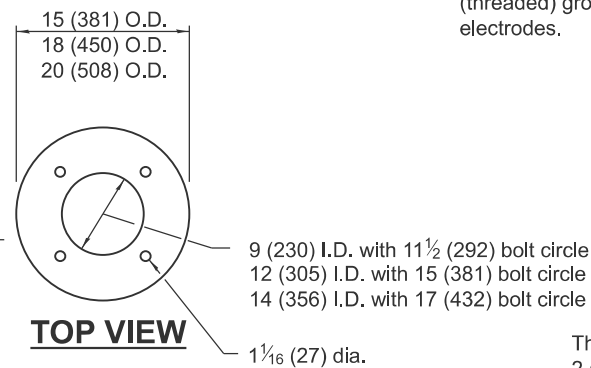
- ① 8⅝ x 8'-0" (220 x 2.44 m) for twin luminaires.
- ② Bolt circle diam. shall be 17 (430) when a transformer base is used.



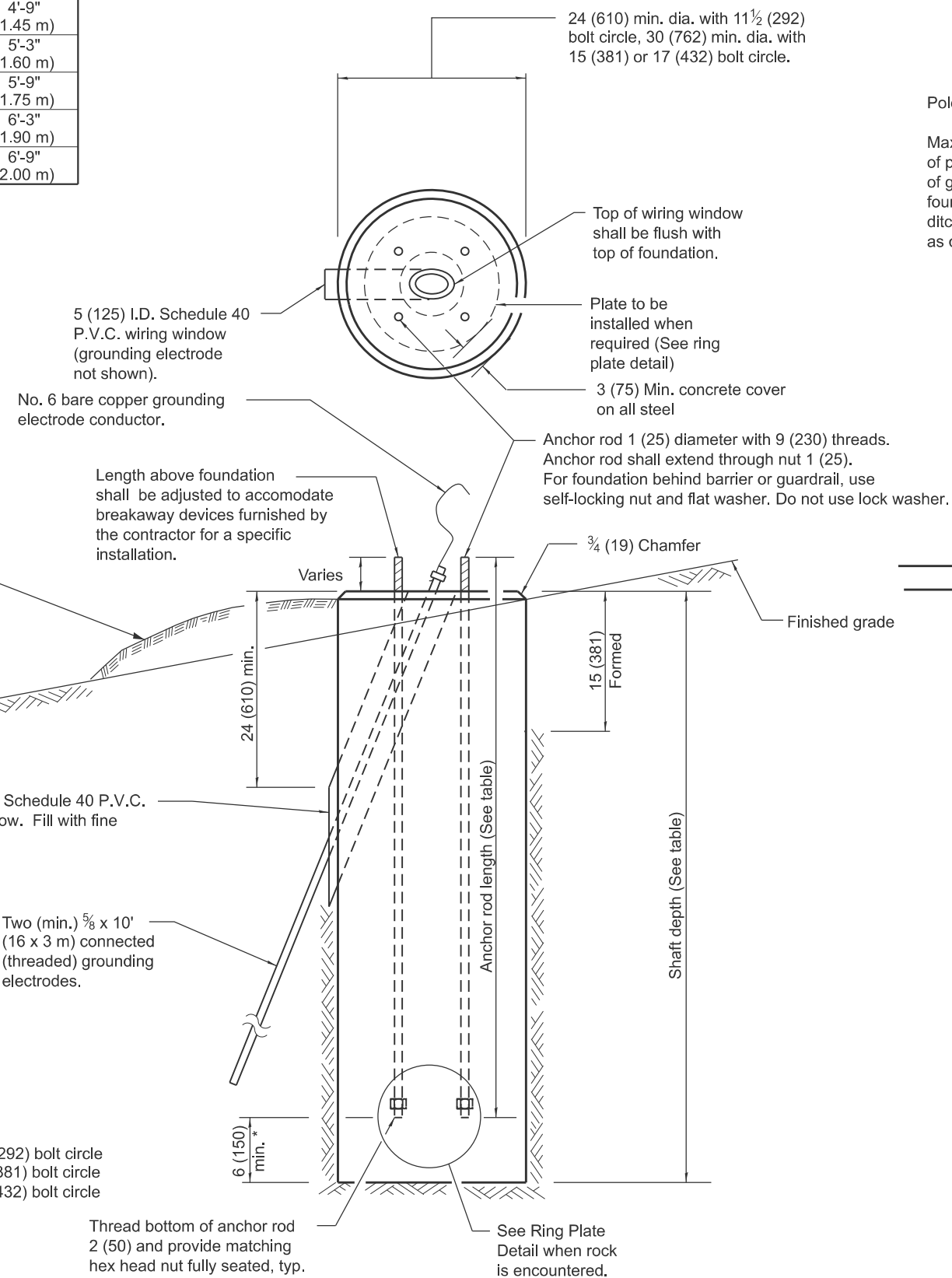
Provide dirt as needed to meet 5' (1.52 m) chord fill around foundation top. Grade dirt level with bottom of top plate.



METAL FOUNDATION

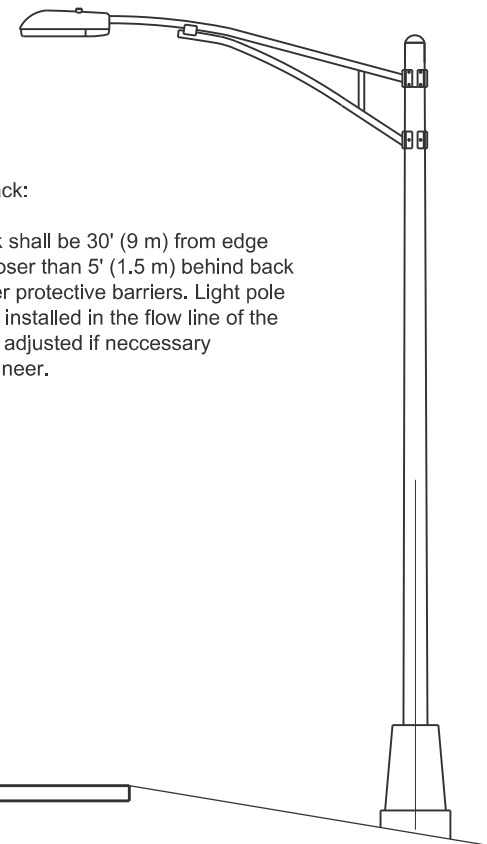


RING PLATE DETAIL

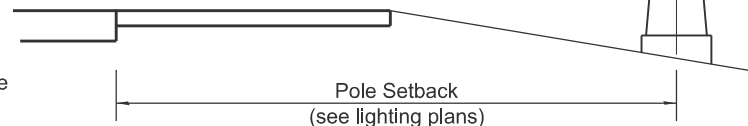


CONCRETE FOUNDATION

* If the required anchor rod length above top of foundation is less than 3 (75), anchor rods may be lowered below 6 (150).



Pole Foundation Setback:
Maximum pole setback shall be 30' (9 m) from edge of pavement and no closer than 5' (1.5 m) behind back of guardrail post or other protective barriers. Light pole foundation shall not be installed in the flow line of the ditch. Setback shall be adjusted if necessary as directed by the Engineer.



GENERAL NOTES

All foundations are designed to be located on slopes not exceeding 2:1 where soils have an unconfined compressive strength of at least 1.0 TSF. The Contractor shall verify the soil strength during drilling for concrete foundations or by monitoring installation resistance of metal foundations and notify the Engineer if other conditions are encountered.

When rock is encountered the foundation depth may be reduced 6 (150) for every 12 (300) of embedment in rock. The minimum foundation depth shall be 4'-6" (1.37 m) with cut anchor rods 6 (150) above bottom of excavated hole. See ring plate detail.

Anchor rods shall be increased in diameter as needed for 50' (15.2 m) mounting height or above. The Contractor shall match the breakaway device size or slotted hole size in the pole base plate to accommodate larger rod sizes.

Transformer bases shall not be used on metal foundations.

All dimensions are in inches (millimeters) unless otherwise shown.

DATE	REVISIONS
1-1-25	Revised pole location setback to agree with the BDE Manual.
1-1-19	Omitted multimount luminaire to agree with BDE Manual.

LIGHT POLE FOUNDATION

STANDARD 836001-05

Illinois Department of Transportation
 APPROVED January 1, 2025
Bernard Sniffin
 ELECTRICAL AND MECHANICAL UNIT CHIEF
 APPROVED January 1, 2025
John C. C...
 ENGINEER OF DESIGN AND ENVIRONMENT
 ISSUED 1-1-10