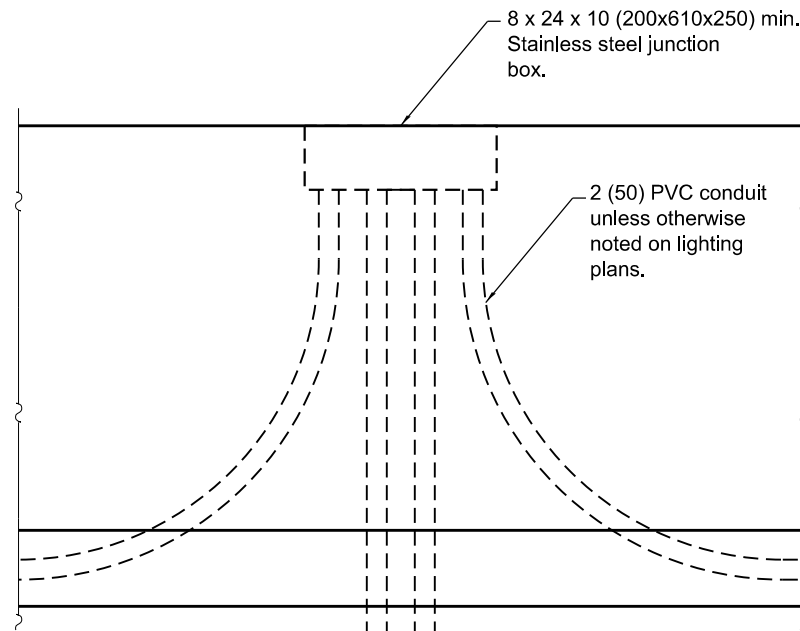
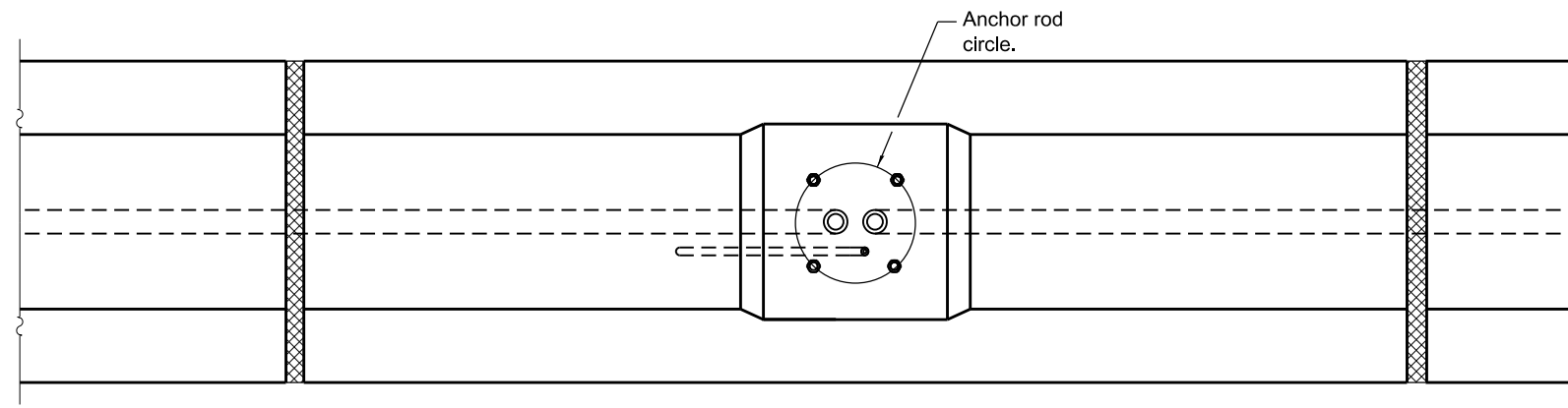
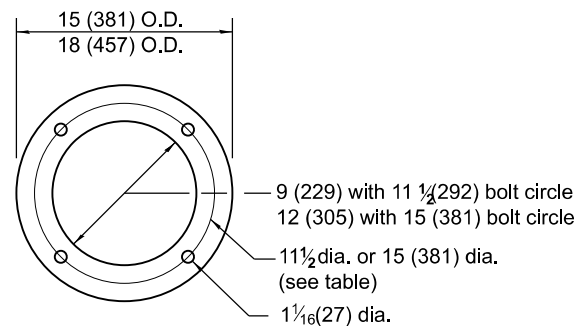


FOUNDATION TABLE				
LIGHT POLE MOUNTING HEIGHT	SHAFT DIAMETER	SHAFT DEPTH	ANCHOR ROD LENGTH	ANCHOR ROD CIRCLE DIA.
≤30' (9.1 m)	24 (610)	36 (914)	6'-2" (1.88 m)	11½ (292)
31'-35' (9.4 m - 10.7 m)	24 (610)	3'-6" (1.06 m)	6'-8" (2.03 m)	11½ (292)
36'-40' (10.9 m - 12.2 m)	30 (762)	4'-0" (1.22 m)	7'-2" (2.18 m)	15 (381)
41'-45' (12.5 m - 13.7 m)	30 (762)	4'-6" (1.37 m)	7'-8" (2.34 m)	15 (381)
46'-50' (14.0 m - 15.2 m)	30 (762)	5'-0" (1.52 m)	8'-2" (2.49 m)	15 (381)

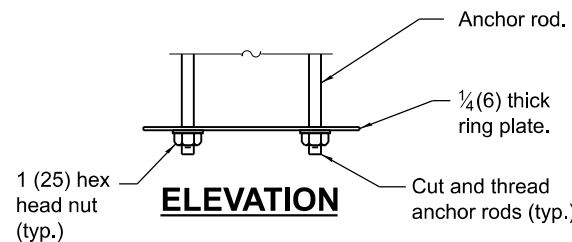


2 (50) PVC conduit, one or two required (See lighting plans)

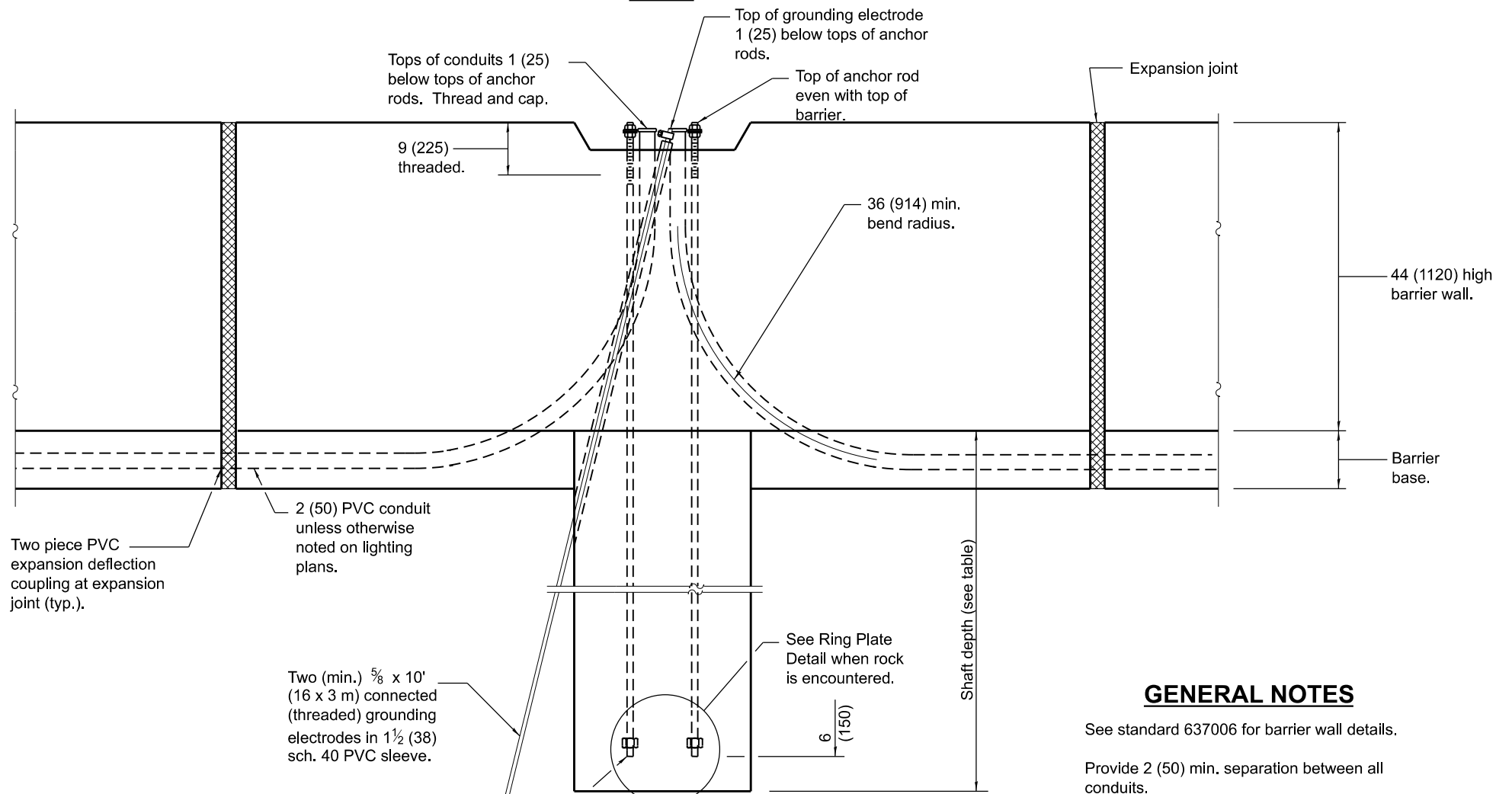
JUNCTION BOX ELEVATION



PLAN



RING PLATE DETAIL ELEVATION



ELEVATION

LIGHT POLE FOUNDATION

GENERAL NOTES

See standard 637006 for barrier wall details.

Provide 2 (50) min. separation between all conduits.

When rock is encountered the foundation depth may be reduced 6 (150) for every 12 (300) of embedment in rock. The minimum foundation depth shall be 30 (760) with cut anchor rods 6 (150) above bottom of excavated hole. See ring plate detail.

All dimensions are in inches (millimeters) unless otherwise shown.

DATE	REVISIONS
1-1-19	Revised standard for new constant slope median barrier.
	Renamed standard.
1-1-14	Modified grounding method. Revised general notes.

LIGHT POLE FOUNDATION WITH 44 IN (1120 mm) CONCRETE BARRIER

STANDARD 836011-02

Illinois Department of Transportation

APPROVED January 1, 2019
M. E. Neppert
ELECTRICAL AND MECHANICAL UNIT CHIEF

APPROVED January 1, 2019
S. E. E. E.
ENGINEER OF DESIGN AND ENVIRONMENT

ISSUED 1-1-13