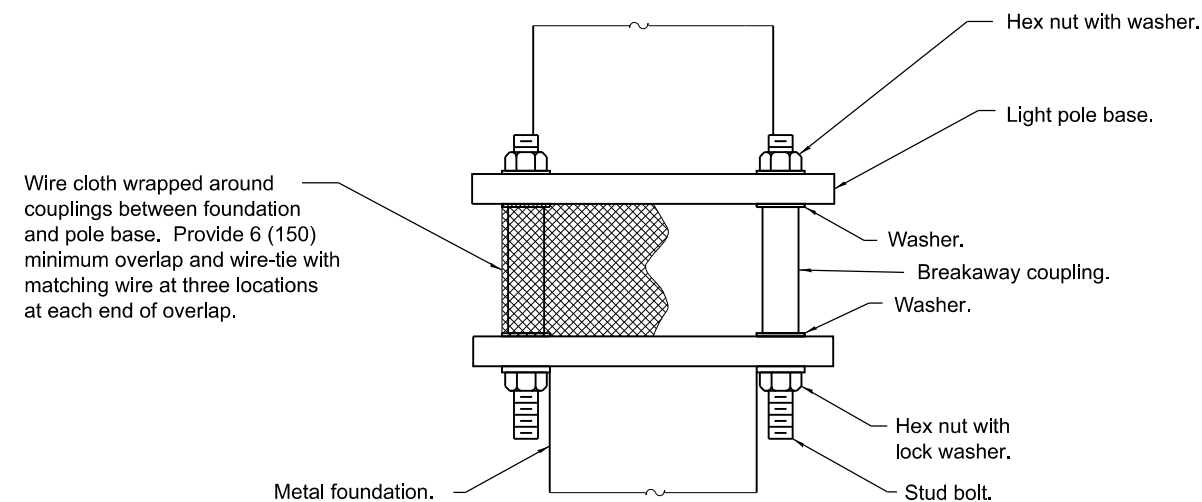
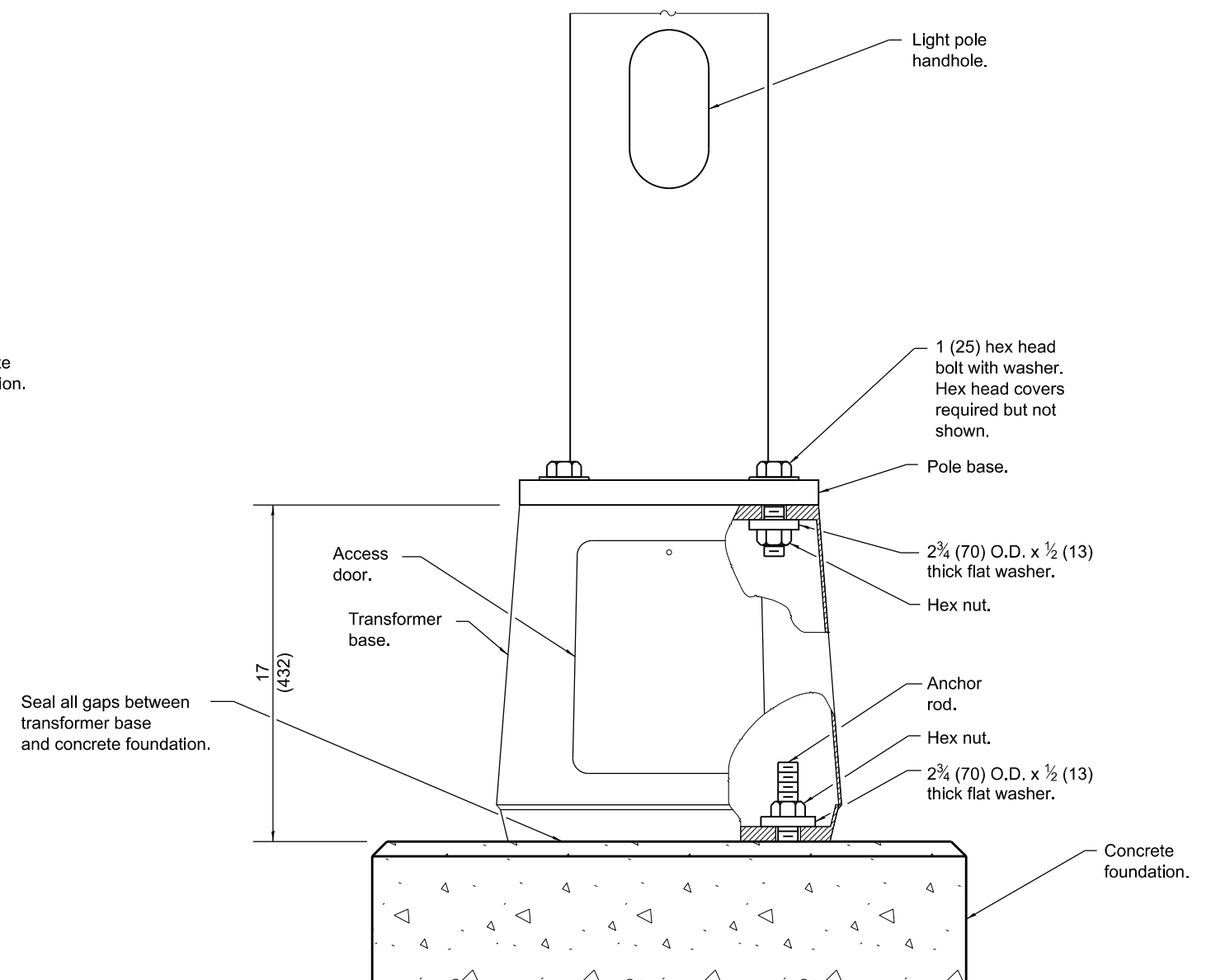


**BREAKAWAY COUPLINGS ON CONCRETE
FOUNDATION FOR STEEL LIGHT POLE**
(Provide pole base skirt around wire cloth when required.)



**BREAKAWAY COUPLINGS ON METAL
FOUNDATION FOR STEEL POLE**
(Provide pole base skirt around wire cloth when required.)



**BREAKAWAY TRANSFORMER BASE FOR
STEEL OR ALUMINUM POLE**
(Steel pole shown)

See Sheet 2 for GENERAL NOTES.

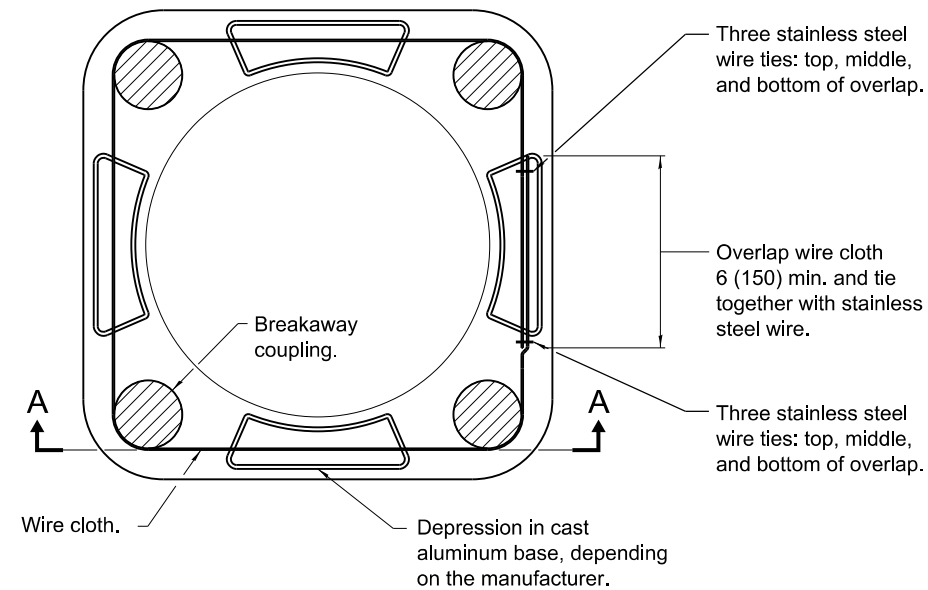
Illinois Department of Transportation	
APPROVED January 1, 2018	ISSUED 1-1-12
ENGINEER OF PRELIMINARY ENGINEERING	
APPROVED January 1, 2018	
ENGINEER OF DESIGN AND ENVIRONMENT	

DATE	REVISIONS
1-1-18	Revised to show rodent shield installation for aluminum poles.
1-1-14	New Standard.

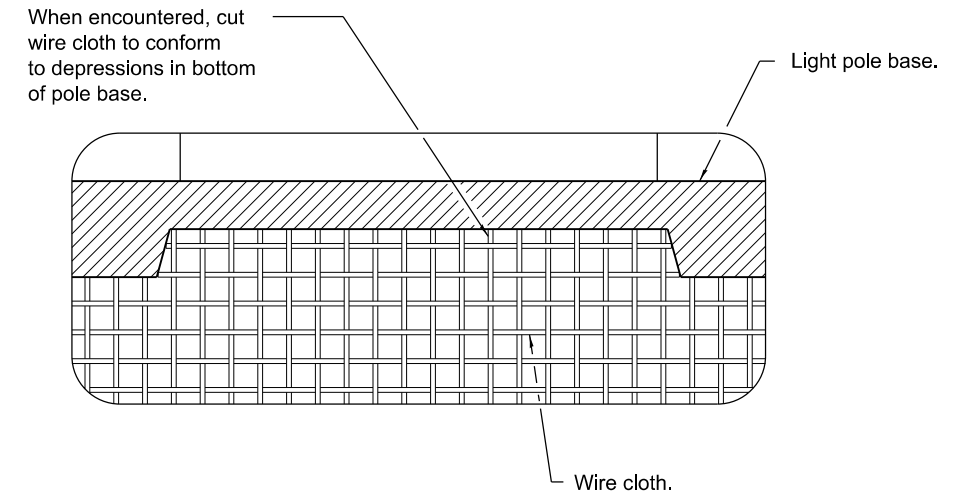
BREAKAWAY DEVICES

(Sheet 1 of 2)

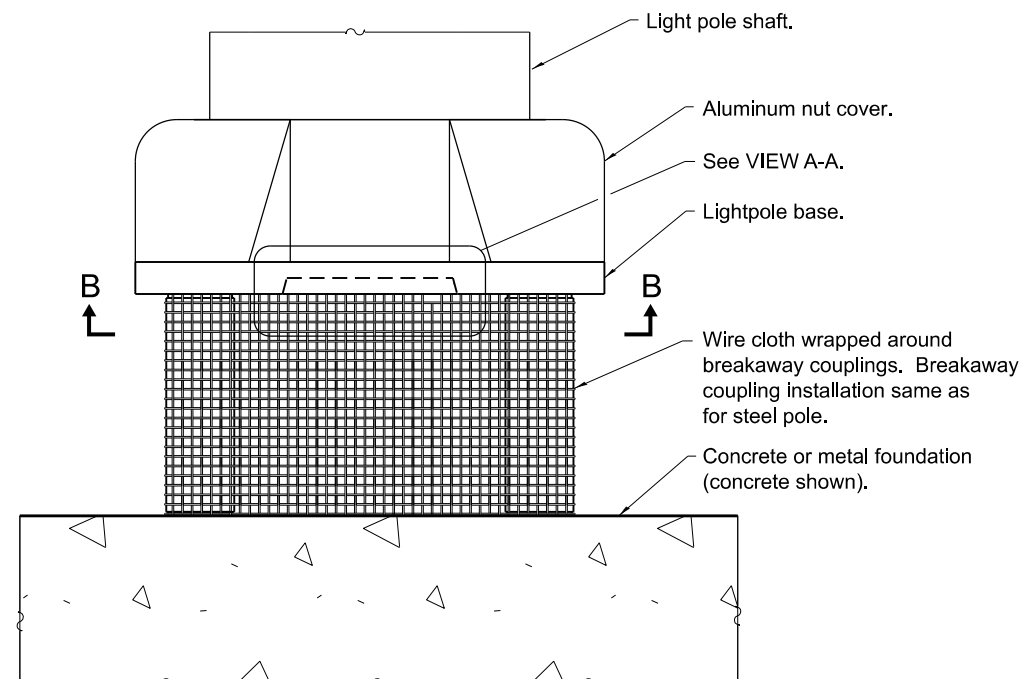
STANDARD 838001-01



VIEW B-B



VIEW A-A



BREAKAWAY COUPLINGS FOR ALUMINUM POLES

(Provide pole base skirt around wire cloth when required.)

GENERAL NOTES

- See light pole standard for details not shown.
- Use largest transformer base bolt circle possible.
- Transformer bases shall not be installed on metal foundations.
- Washers on top of pole base shall cover the entire bolt slot.
- See Standard 836001 for Light Pole Foundation.
- Wire cloth shall be stainless steel, have a maximum opening of $\frac{1}{4}$ (6), and have a minimum wire size of AWG No. 16 (1.6).
- All dimensions are in inches (millimeters) unless otherwise shown.

BREAKAWAY DEVICES

(Sheet 2 of 2)

STANDARD 838001-01