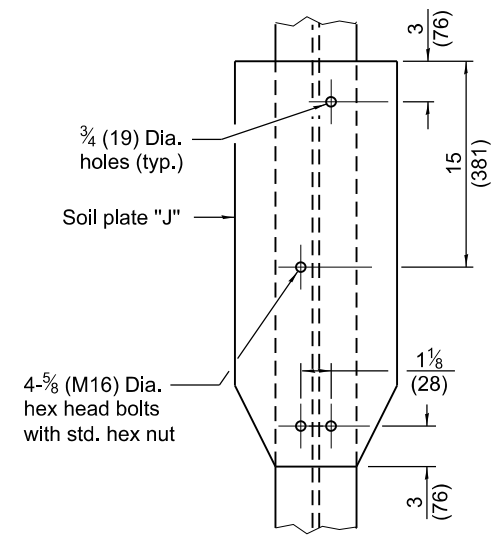
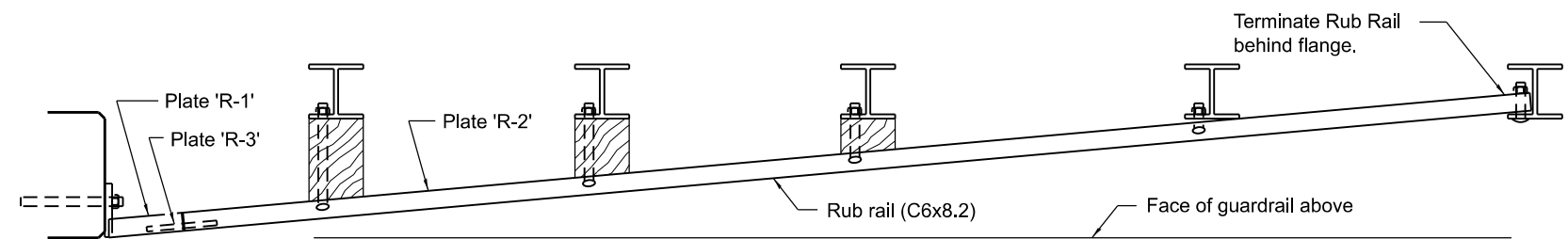


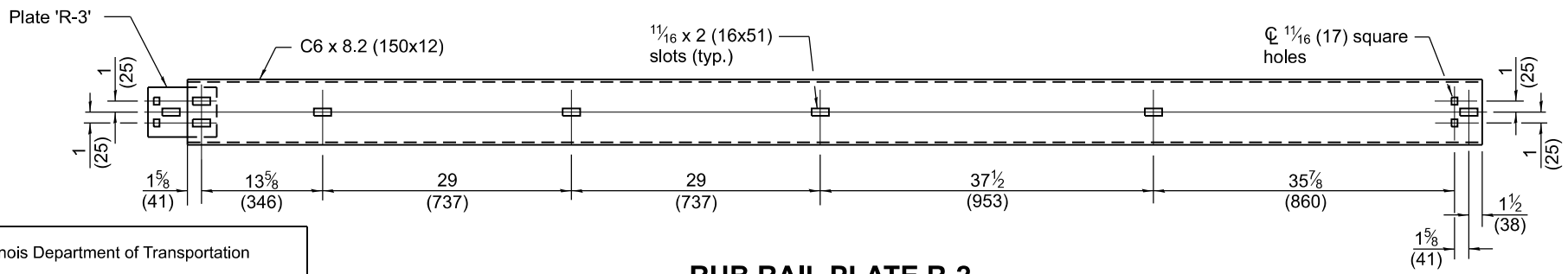
**ELEVATION-TRAFFIC BARRIER TERMINAL TYPE 5R**



**ALTERNATE SOIL PLATE CONNECTION**



**SECTION A-A**



**RUB RAIL PLATE R-2**

**GENERAL NOTES**

- See Standard B.L.R. 26 for details of guardrail not shown.
- Install the face of the guardrail flush with the face of the parapet. Install plate washer "D" so that the 1 (25) projection fills the remainder of the slotted holes in the 1 (25) end plate on plate "G" after the 1 (25) bolts are in place.
- \* When an expansion joint exists below the connector, bolts shall be provided with locknut or double nut and shall be tightened only to a point that will allow plate G to be free to move.
- All dimensions are in inches (millimeters) unless otherwise shown.

Illinois Department of Transportation

APPROVED January 1, 2012

*David L. Lewis*  
ENGINEER OF LOCAL ROADS AND STREETS

APPROVED January 1, 2012

*Scott S. Smith*  
ENGINEER OF DESIGN AND ENVIRONMENT

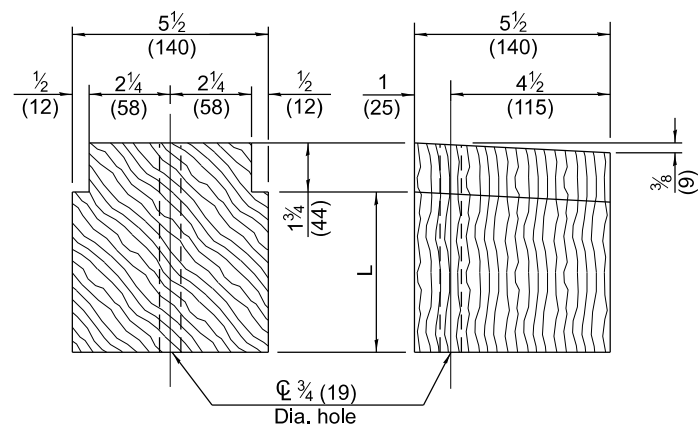
ISSUED 1-1-97

DATE	REVISIONS
1-1-12	Revised barrier terminal height per note ①.
1-1-09	Switched units to English (metric).

**TRAFFIC BARRIER TERMINAL - TYPE 5R**

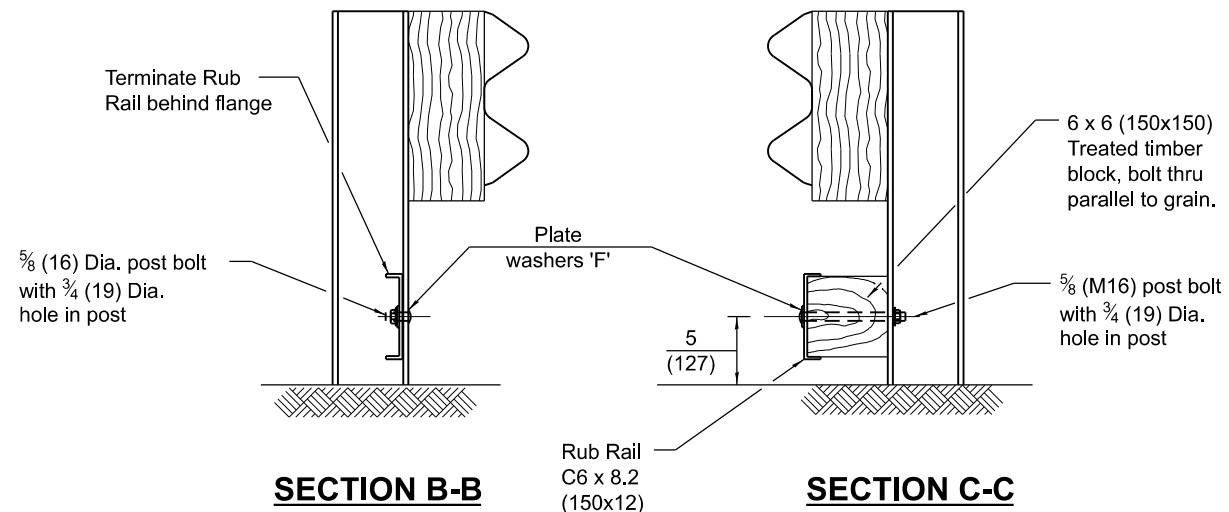
(Sheet 1 of 2)

**STANDARD B.L.R. 20-7**



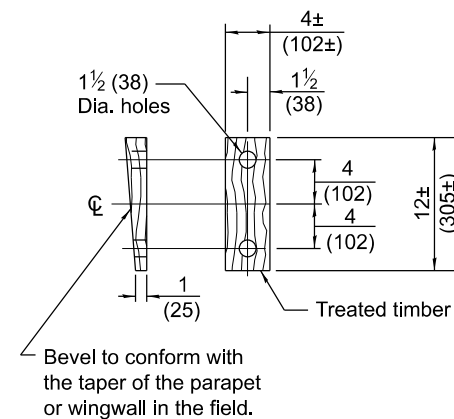
**TREATED TIMBER BLOCKING**  
 \*\* Approximate Lengths Field Verify

** L
7 3/8 (187)
5 5/8 (143)
3 7/8 (98)

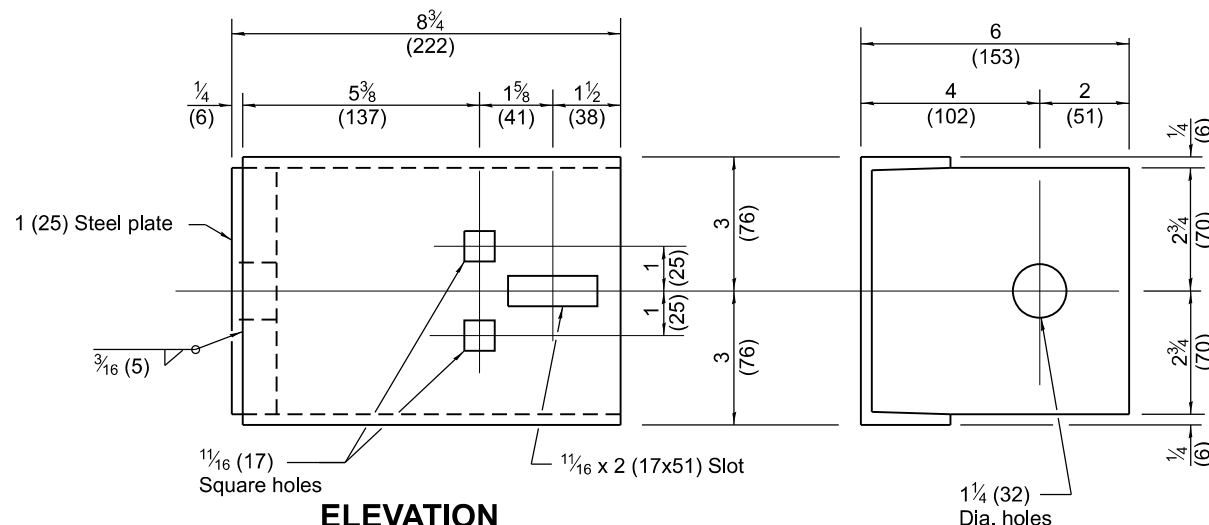


**SECTION B-B**

**SECTION C-C**

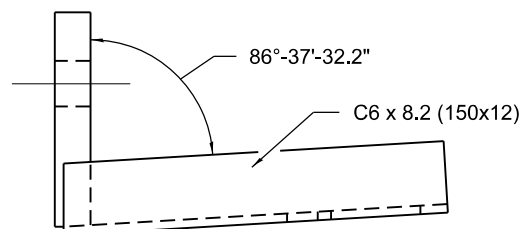


**WEDGE M**



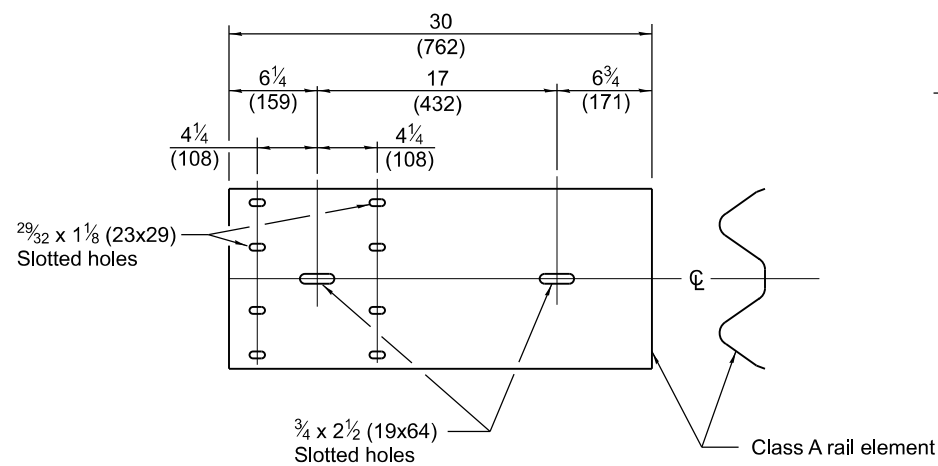
**ELEVATION**

**END VIEW**

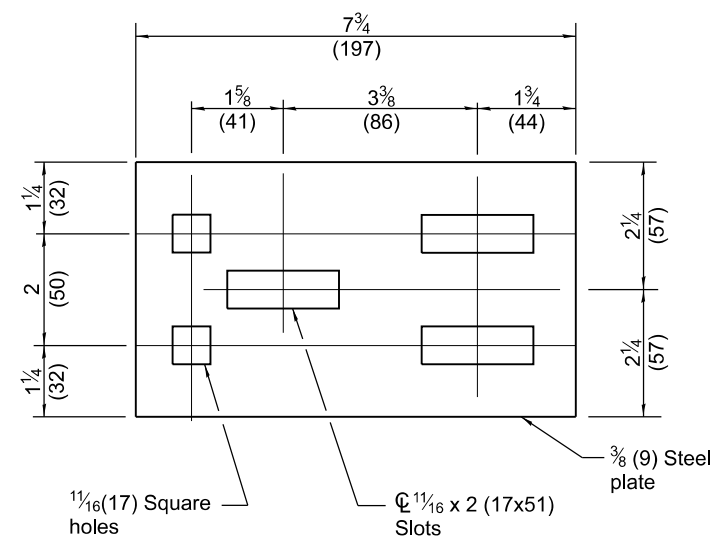


**PLAN**

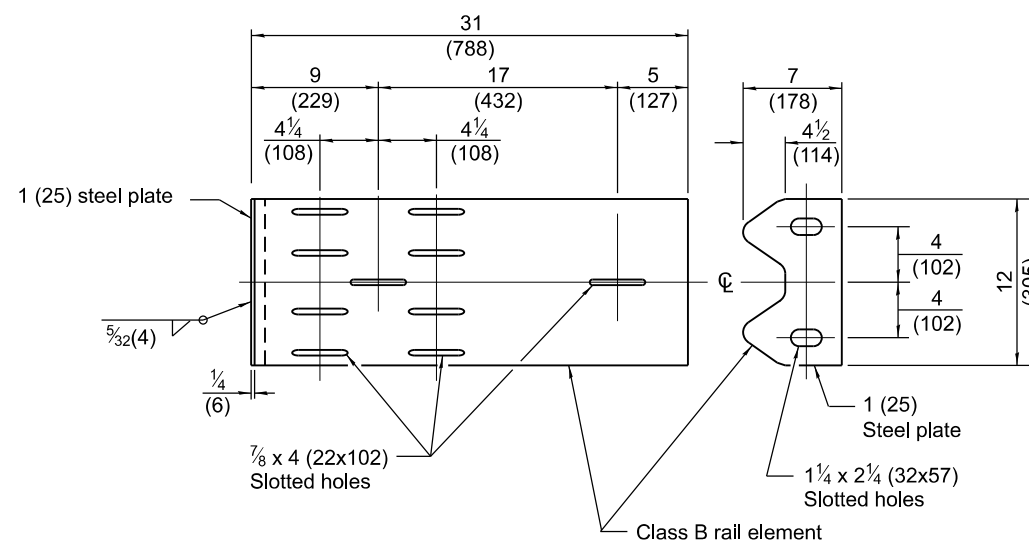
**RUB RAIL PLATE R-1**



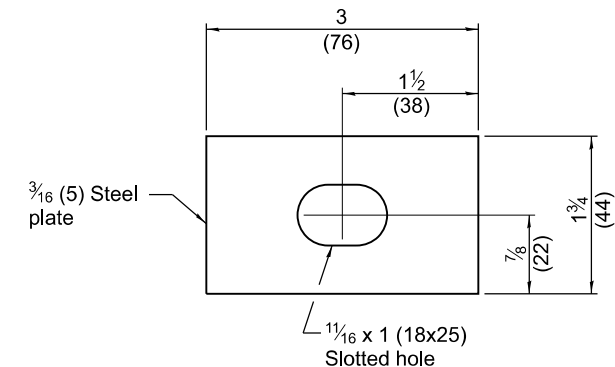
**PLATE E**



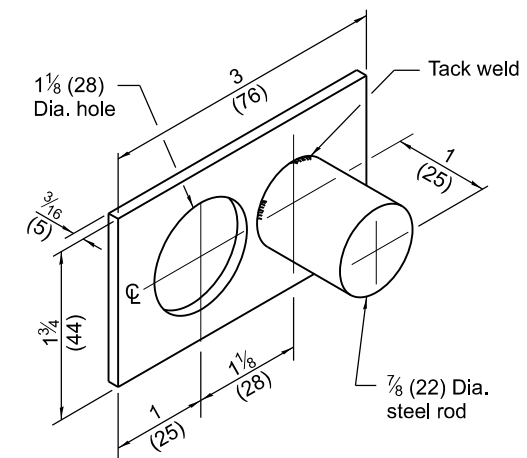
**SPLICE PLATE 'R-3'**



**PLATE G**



**PLATE WASHER F**



**PLATE WASHER D**

**TRAFFIC BARRIER  
 TERMINAL - TYPE 5R**

(Sheet 2 of 2)

**STANDARD B.L.R. 20-7**

Illinois Department of Transportation

APPROVED January 1, 2012  
*Danell Lewis*  
 ENGINEER OF LOCAL ROADS AND STREETS

APPROVED January 1, 2012  
*Scott Schick*  
 ENGINEER OF DESIGN AND ENVIRONMENT

ISSUED 1-1-97