

## ROLLER-SKATING, SKATEBOARDING, AND BICYCLING IN DOWNTOWN

### POLICY:

It is the policy of the Omaha Police Department (OPD) to enforce Omaha City Ordinance 36-148 which regulates roller-skating, skateboarding, and bicycling in the Old Market and Wholesale District, the downtown business district, and the area between Jackson to Jones Street and 10<sup>th</sup> to 11<sup>th</sup> Street.

### DEFINITIONS:

Downtown Business District: Area bounded by and located within Chicago Street on the north, Jackson Street on the south, 20<sup>th</sup> Street on the west and 8<sup>th</sup> Street on the east. Such areas shall include the entire right-of-way of each street forming the boundaries of the areas (Omaha Municipal Code 36-148).

Old Market and Wholesale District: Harney to Howard Street, 10<sup>th</sup> to 13<sup>th</sup> Street and Howard to Jackson Street, 10<sup>th</sup> to 12<sup>th</sup> Street (Omaha Municipal Code 36-148).

Roller-Skating: Includes the use of either inline skates or skates with wheels attached in a parallel configuration (Omaha Municipal Code 36-148).

### PROCEDURE:

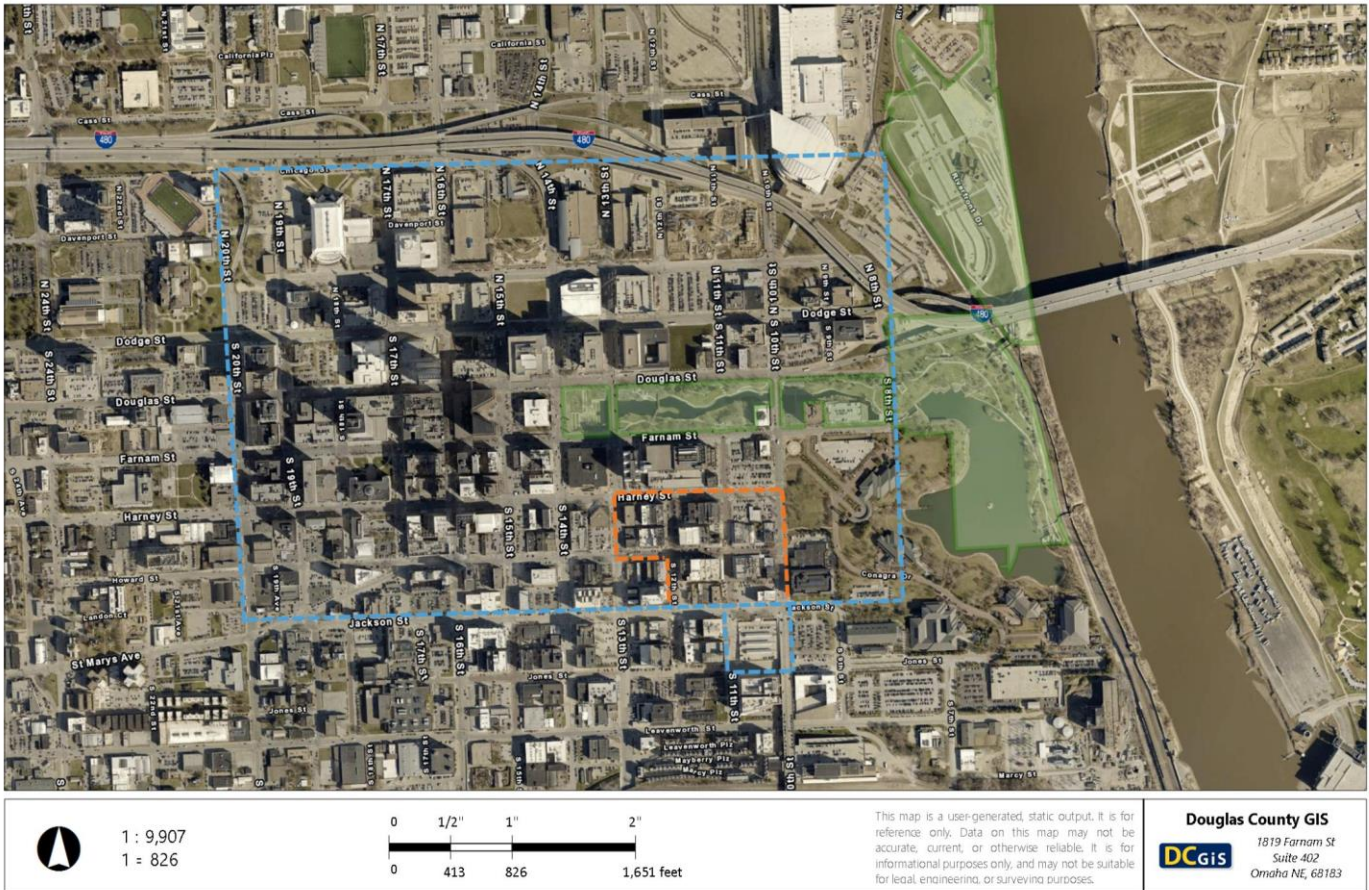
#### I. Enforcement Area

- A. Omaha City Ordinance prohibits roller-skating, skateboarding, or bicycling on the public sidewalks of the downtown business district or the area from Jackson to Jones Street, 10<sup>th</sup> to 11<sup>th</sup> Street.
  - 1. This ordinance does not prohibit walking or pushing a bicycle in this area EXCEPT on the public sidewalks of the Old Market and Wholesale District.
  - 2. People may walk but not ride bicycles across the pedestrian bridge that crosses S. 8<sup>th</sup> Street between Douglas and Farnam Street.

**NOTE:** This ordinance does not regulate roller-skating, skateboarding, or bicycling in the Heartland of America Park.

- A. The below map highlights the enforcement area for Omaha City Ordinance 36-148:

## Omaha City Ordinance - 36-148



- Downtown Business District
- Old Market and Wholesale District

## II. Violations

- A. Violators will be issued a criminal citation.
- B. Officers may impound violators' roller-skates, skateboard, or bicycle.

## REFERENCES:

### I. Laws

- A. Omaha City Ordinance 36-148.

### II. Previous OPD Orders

- A. Previous OPD General Orders include: #24-78, #50-80, #55-87, #17-88, #38-14, and #38-17.